

Motorcycle-related trauma: effects of age and site of injuries on mortality. A single-center, retrospective study.

Stefano Granieri (✉ stefano.granieri@unimi.it)

Università degli Studi di Milano <https://orcid.org/0000-0001-9167-3400>

Elisa Reitano

Università degli Studi di Milano

Francesca Bindi

ASST Niguarda

Federica Renzi

ASST Niguarda

Fabrizio Sammartano

ASST Niguarda

Stefania Cimbanassi

ASST Niguarda

Shailvi Gupta

R Adams Cowley Shock Trauma Center

Osvaldo Chiara

Università degli Studi di Milano

Research article

Keywords: motorcycle, motorcycle crash, trauma

Posted Date: February 24th, 2020

DOI: <https://doi.org/10.21203/rs.2.22131/v2>

License: (cc) (i) This work is licensed under a Creative Commons Attribution 4.0 International License. [Read Full License](#)

Version of Record: A version of this preprint was published at World Journal of Emergency Surgery on March 10th, 2020. See the published version at <https://doi.org/10.1186/s13017-020-00297-1>.

Abstract

Background Motorcyclists are often victims of road traffic incidents. Though elderly patients seem to have worse survival outcomes and sustain more severe injuries than younger patients, concordance in the literature for this does not exist. The aim of the study is to evaluate the impact of age and injury severity on the mortality of patients undergoing motorcycle trauma. **Methods** Data of 1725 patients consecutively admitted to our Trauma Center were selected from 2002 to 2016 and retrospectively analyzed. The sample was divided into three age groups: ≤ 17 years, 18-54 years and ≥ 55 years. Mortality rates were analyzed for the overall population and patients with Injury Severity Score (ISS) ≥ 25 . Differences in survival among age groups were evaluated with Log-Rank test and multivariate logistic regression models were created to identify independent predictors of mortality. **Results** A lower survival rate was detected in patients older than 55 years (83,6% vs 94,7%; $p = 0.049$) and in those sustaining critical injuries (ISS ≥ 25 , 61% vs 83% $p = 0.021$). Age ($p = 0,027$; OR: 1,03), ISS ($p < 0,001$; OR: 1,09), Revised Trauma Score (RTS) ($p < 0,001$; OR: 0,47) resulted independent predictors of death. Multivariate analysis identified head ($p < 0,001$; OR: 2,04), chest ($p < 0,001$; OR: 1,54), abdominal ($p < 0,001$; OR: 1,37) and pelvic ($p = 0,014$; OR: 1,26) injuries as independent risk factors related to mortality as well. Compared to the theoretical probability of survival, patients of all age groups showed a survival advantage when managed at a level I Trauma Center. **Conclusions** We detected anatomical injury distributions and mortality rates among three age groups. Patients aging more than 55 years had an increased risk of death, with a prevalence of severe chest injuries, while younger patients sustained more severe head trauma. Age represented an independent predictor of death. Management of these patients at a Level I Trauma Center may lead to improved outcomes.

Background

Motorcyclists represent a significant percentage of road traffic victims worldwide and have a greater risk of injury related death than car occupants(1,2). Despite the burden of injuries associated with motorcycle incidents, few comprehensive studies have been conducted to examine the outcome of these patients according to age and site of injuries. Identifying high-risk injury patterns and common clusters of ages may allow for targeted interventions leading to improved care(3,4).

Generally, young motorcyclists are more likely to be involved in incidents under the influence of alcohol, riding without insurance, or not wearing a helmet or other protective clothing (5). Furthermore, a significant correlation was found between risk perception and traffic condition awareness for experienced drivers(6). Given previous studies, a driver's age and experience are used worldwide as components of licensing restrictions to help reduce the burden of injuries from road traffic incidents(7).

Results reported in the literature regarding mortality rates between younger and older motorcyclists and the patterns of injuries in different age groups are often discordant. Some authors suggest that advanced age may be associated with worse outcomes after motorcycle trauma whereas other studies suggest the opposite(7–13). The reason of this disagreement may lie in the different cut-offs given by various Authors in order to define the “elderly” group. Furthermore, advanced age is associated with changes in physiology

and chronic diseases and drugs can alter the body response to injury, lowering the threshold of tolerance. From the other side, the old and experienced motorcycle driver is more prudent because of the awareness of traffic-related hazards. Given the discordance in the current literature, the aim of this study was to evaluate the correlation between the severity of injuries stratified by anatomical region and age with mortality rates of patients involved in motorcycle incidents managed at a level I Trauma Center.

Methods

All details about trauma patients managed at Niguarda Hospital, a level 1 Trauma Center in Milan, Italy(14), are collected in the Niguarda trauma registry, in which demographic data, mechanism of trauma, pre-hospital and in-hospital clinical conditions, diagnostic and therapeutic procedures and survival outcome are recorded. The registry is held by a Trauma Team consultant who is meant to keep it constantly updated and it is annually revised by the head of the department. All motorcycle-related consecutive incidents from 2002 to 2016 were selected from the registry and demographic data, abbreviated injury scale (AIS, 1998 version) score of each anatomical region, Injury Severity Score (ISS), Revised Trauma Score (RTS), probability of survival (PS) obtained by Trauma and Injury Severity Score (TRISS) system, length of hospitalization and survival outcome were retrospectively analyzed. The American Society of Anesthesiologists (ASA) physical status classification was chosen to summarize comorbidities in an ordinal fashion; unfortunately, these data have been available only from 2011 onwards. Injuries were grouped by anatomical region: head, face, chest, abdomen, pelvis, extremities and external according to AIS classification. Patients were divided into three age groups: ≤ 17 years, 18-54 years and ≥ 55 years. The 17-year old age cut-off was selected according to Italian legislation definition of legal age, whereas the 55 years cut-off was identified based on the TRISS calculator age coefficient turning point.

Data were recorded in a computerized spreadsheet (Microsoft Excel 2016; Microsoft Corporation, Redmond; WA) and analyzed with statistical software (IBM Corp. Released 2012. IBM SPSS Statistics for Windows, Version 21.0. Armonk, NY: IBM Corp.).

The sample distribution was evaluated with Kolmogorov-Smirnov and Shapiro-Wilk tests resulting in a non-gaussian distribution for any of the examined variable. Continuous variables were compared by independent sample Kruskal-Wallis test, while categorical variables were analyzed using Pearson's Chi-squared test. Mortality rates were obtained for the overall population and patients with $ISS \geq 25$ considering the age group stratification mentioned above. In-hospital mortality was estimated calculating the elapsed time since admission to Emergency Room to hospital discharge or death.

Survival curves were obtained with Kaplan-Meier analysis and Log-Rank test was assessed to evaluate differences in cumulative survival among age groups. Bivariate logistic regression was used to provide odds ratio for individual variables, identifying possible predictors of mortality. Two different multivariate regression models were then built: one for general variables (Age, ISS, RTS, PS) and another one for injured anatomical regions in order to detect independent risk factors for death and to estimate the adjusted odds ratio (OR) and 95% confidence interval (CI). Only significant ($p < 0.1$) variables at bivariate analysis were included in the multivariate models P values below .05 were considered statistically significant.

We then investigated the efficacy of providing care at a level I Trauma Center by comparing the observed survival rate with the estimated one, obtained by the Trauma Injury Severity Score (TRISS) system.

The institution of trauma registry for all major trauma admitted to our trauma center has been approved by the Niguarda Ethical Committee Milano Area 3 (record number 534-102018). Given the retrospective nature of the study, a specific ethical review board approval was not required.

Results

During a 14-year period, from 2002 to 2016, 6691 major trauma patients were managed at Niguarda Hospital, a level 1 Trauma Center in Milan, Italy. A total of 1725 motorcycle incident victims were selected from the trauma registry. One hundred thirty-four patients (7.8%) were less than 18 years old (group 1), 1447 (83.9%) between 18 and 54 years old (group 2) and 144 (8.3%) more than 55 years old (group 3). Of the overall population, 26.8% (n=462) sustained critical injuries, as defined by an ISS \geq 25.

Further clinical characteristics of the study population are summarized in Table 1.

Table 1: Demographic and trauma related data and comparison among age groups

Variables	Age Groups (%)				<i>p</i>
	≤ 17 (134)	18-54 (1447)	≥ 55 (144)	Total (1725)	
Gender					0.054
Male	114 (85.1)	1303 (90)	135 (93.8)	1552 (90)	
Female	20 (14.9)	144 (10)	9 (6.3)	173 (10)	
Age					
Mean	15.6	34	61	34.85	
S.D.	2.2	9.9	5.8	13.12	
Outcome					0.049**
Survived	128 (95.5)	1382 (95.5)	131 (91)	1641 (95.1)	
Dead	6 (4.5)	65 (4.5)	13 (9)	84 (4.9)	
ASA***					<0.001*
1	51 (100)	724 (88.5)	61 (55.5)	836 (85.4)	
2	0	90 (11)	41 (37.3)	131 (13.4)	
3	0	4 (0.5)	8 (7.3)	12 (1.2)	
ISS					0.662
Mean	16.34	16.96	18.22	17.02	
S.D.	13.07	14.44	16.12	14.48	
RTS					0.702
Mean	7.23	7.16	7.07	7.16	
S.D.	1.47	1.52	1.87	1.55	
Probability of Survival					
Mean	91.44%	90.97%	81.46%	90.21%	<0.001*
S.D.	19.09	21.1	29.29	21.91	
Length of hospitalization (days)					0.648
Mean	15.9	17.04	14.85	16.76	
S.D.	20.28	22.67	17.81	22.13	

*Significant value; **Log-Rank test; ***Data available only for 979 patients. ASA: American Society of Anesthesiologists; ISS: Injury Severity Score; RTS: Revised Trauma Score; TRISS: Trauma and Injury Severity Score.

No differences among age groups were noticed regarding ISS, RTS, length of hospital stay, but mortality was double (9% vs 4.5%) in the older age group as compared to the other groups.

Since we started collecting comorbidities information from 2011 onward, ASA score was available only for 979 patients. More than 85% of this subset of patients had an ASA score of 1 and patients belonging to the third group had the greatest proportion of ASA 2 and 3. The comparison among groups showed a significant difference ($p < 0.001$). Probability of survival estimated with Trauma and Injury Severity Score (TRISS) was $91.44\% \pm 19.09$ for group 1, $90.97\% \pm 21.1$ for group 2 and $81.46\% \pm 29.39$ for group 3 ($p < 0.001$).

The mortality rate in the overall population was 4.9% (84/1725) (Table 1). More than three fourths of the patients (64/84, 76,2%) died in the first 48 hours and almost 62% of them belonged to the second group (18-54 years). Figure 1 shows mortality trend over time (A) and mortality distribution among age groups according to a previous study published by our group (B)(15).

Figure 1

The survival rate computed with Kaplan-Meier method was 99.9% in patients with an $ISS \leq 24$ and 80.9% in more severely injured patients, with $ISS \geq 25$ (Log Rank test: $p < 0.001$). Moreover, survival was different in the three age groups. Patients aging more than 55 years showed a significantly worse prognosis compared with younger patients (Log-Rank test: $p = 0.049$; Fig. 2A). The reduction in survival was more evident for patients older than 55 years old with $ISS \geq 25$ (Log Rank test: $p = 0.021$; Fig. 2B), with a striking drop during the first ten days after trauma.

Figure 2

Overall distribution of injuries stratified by anatomical district is reported in Table 2.

Table 2: Anatomical districts of injuries

	Age Groups (%)			
	≤ 17 (134)	18-54 (1447)	≥ 55 (144)	Total (1725)
Head	85 (28,6)	758 (22,2)	85 (22,3)	928 (22,65)
Face	22 (7,4)	280 (8,2)	31 (8,2)	333 (8,12)
Chest	30 (10)	532 (15,6)	73 (19,1)	635 (15,49)
Abdomen	25 (8,4)	332 (9,7)	34 (8,9)	391 (9,54)
Pelvis	13 (4,4)	184 (5,4)	22 (5,8)	219 (5,34)
Extremities	60 (20,1)	730 (21,3)	74 (19,4)	864 (21,08)
Surface	63 (21,1)	602 (17,6)	62 (16,3)	727 (17,74)
Anatomical districts of injuries AIS 98' ≥ 3				
	Age Groups (%)			
	≤ 17	18-54	≥ 55	Total
Head	44 (37,3)	300 (22,3)	36 (24,2)	380 (23,59)
Face	1 (0,8)	30 (2,2)	3 (2)	34 (2,11)
Chest	20 (17)	458 (34,1)	56 (37,6)	534 (33,15)
Abdomen	19 (16,1)	204 (15,2)	15 (10)	238 (14,77)
Pelvis	9 (7,6)	124 (9,2)	17 (11,4)	150 (9,31)
Extremities	25 (21,2)	227 (16,9)	22 (14,8)	274 (17,01)
Surface	-	1 (0,1)	-	1 (0,06)

Head, extremities and external injuries were the most common, whereas in critical injuries defined by an AIS 98' ≥ 3 , chest, head and extremity injuries were the most common. Torso injuries (chest, abdomen and pelvis together) were 30.4% in overall population and 57.2% when only AIS ≥ 3 were considered. Severe head injuries were prevailing in younger (37.3%) and chest injuries less represented (17%). In older patients the opposite result was observed: critical chest injuries were more frequent (37.6%) than head injuries (24.2%).

Significant variables which correlated with mortality using bivariate logistic regression analysis were ISS, RTS and PS. Because of substantial multicollinearity with age (Variance Inflation Factor - VIF: 6,31), PS was excluded from the multivariate model. All variables entered in the multiple regression model were confirmed independent predictors of death (Table 3). A subgroup analysis was conducted to evaluate the effect of comorbidities (using ASA classification) on the outcome. Bivariate logistic regression failed to demonstrate a potential predicting role of comorbidities on survival ($p = 0,358$; OR: 0,52; 95% CI: 0,129-2,095).

Table 3: Bivariate analysis: general variables

	<i>p</i>	OR	CI 95%	
			Lower	Upper
Male Gender	0,109	2,296	0,831	6,347
Age	0,06	1,016	0,999	1,032
ISS	<0.001*	1,136	1,113	1,159
RTS	<0.001*	0,363	0,314	0,419
PS (TRISS)	<0.001*	0,001	0,001	0,002

Multivariate analysis: general variables

	<i>p</i>	Adjusted OR	CI 95%	
			Lower	Upper
Age	0,027*	1,03	1,003	1,057
ISS	<0.001*	1,091	1,064	1,118
RTS	<0.001*	0,472	0,399	0,558

*Significant value. ISS: Injury Severity Score; RTS: Revised Trauma Score; TRISS: Trauma and Injury Severity Score.

Similarly, districts of injury were individually evaluated with bivariate logistic regression which pointed out a significant correlation with mortality for all of them. A second multivariate analysis was then realized, showing that the head, chest, abdominal and pelvic injuries were all independent risk factors related to mortality, whereas extremities injuries were associated with improved survival. Considering only severe injuries (AIS 98' ≥ 3), multivariate analysis demonstrated that head, chest and abdominal injuries were independent risk factors related to mortality, with elevated odds ratios particularly for head and chest injuries (Table 4).

Table 4. Multivariate analysis: injured districts predictors of death in whole population

	<i>p</i>	Adjusted OR	CI 95%	
			Lower	Upper
Head	<0,001*	2,036	1,749	2,37
Face	0,197	1,189	0,914	1,547
Chest	<0,001*	1,546	1,337	1,788
Abdomen	<0,001*	1,373	1,171	1,61
Pelvis	0,014*	1,257	1,047	1,511
Extremities	0,003*	0,715	0,574	0,89

Multivariate analysis: injured districts AIS 98' \geq 3 predictors of death in whole population

	<i>p</i>	Adjusted OR	CI 95%	
			Lower	Upper
Head	<0.001*	8,792	5,295	14,599
Face	0,072	2,568	0,92	7,169
Chest	<0.001*	3,684	2,202	6,164
Abdomen	0,001*	2,432	1,415	4,18
Pelvis	0,174	1,637	0,805	3,329

*Significant value. AIS: Abbreviated Injury Scale 1998

By comparing observed and TRISS estimated survival rates, patients of all age groups treated at a trauma center had a survival advantage. The result was even more relevant when considering the subgroup of patients with ISS \geq 25 and patients older of 55 years (Table 5).

Table 5: Observed and estimated survival rates

Overall survival rate	Age groups		
	≤17	18-54	≥55
Observed	94,7%	94.7%	83.6%
Estimated (TRISS)	91,4%	90.9%	81.5%
Absolute difference	3.2%	3.8%	2.1%
Survival rate for ISS ≥ 25	Age groups		
	≤17	18-54	≥55
Observed	82.7%	83%	61%
Estimated (TRISS)	74.8%	71.2%	43.1%
Absolute difference	7.9%	11.8%	17.9%

TRISS: Trauma and Injury Severity Score

Discussion

Motorcyclists represent a quarter of road deaths in the world and a consistent part of all traffic victims. The number of motorcyclists suffering from road trauma is growing due to the rapid global expansion of the motorcycle market. The use of motorcycles is expanding also in older ages for enhanced mobility in heavy traffic urban areas. Some evidences suggest that age is generally an important predictor of mortality related to traumatic events(16,17). Our data demonstrate that older patients had an increased mortality for severe injuries. Head, chest, abdominal and pelvic injuries were all independent predictors of death; severe head injuries occurred more frequently in younger patients, while chest injuries were more commonly in older patients.

The relationship between age, severity of injuries and mortality following motorcycle trauma is still controversial (8,13). Mullin B. et al. demonstrated a relationship of inverse proportionality between age with risk of death and severe injuries in motorcyclists and car drivers(7). Increased age of motorcycle drivers has been strongly highlighted as a protective factor against fatal and non-fatal injuries deriving from motorcycle crashes (8,18), due to greater driving experience of older patients. Other studies showed that the elderly population have a higher risk of severe injuries and death(19). Underlying diseases in the older population would increase mortality for all types of trauma(20).

Some investigators suggest that drivers older than 40 years are 25% more prone to death after motorcycle injuries(12). Moreover, Richter et al. compared crash injury rates between older and younger road users, detecting a higher severity of the injuries and mortality rate in the older cohort(19).

In the present study the overall mortality rate was 4.9% for all motorcycle injuries, with the highest rate among the older group (≥ 55 years) and multivariate analysis confirmed that age is an independent predictor of death.

ASA score was available just for a bit more than a half of our sample. Due to this limitation, we couldn't adjust our survival analysis for comorbidities. Anyway, the subgroup analysis failed to highlight a contribution of comorbidities on the survival outcome and the negative OR of bivariate logistic regression would indicate a worse outcome for lower ASA scores. This could be explained by the fact that all ASA 3 patients survived; by contrast, 22 out of 24 deaths in the subgroup were ASA 1.

Despite the results of the subgroup analysis, because of the similar values of ISS and RTS between age groups, we tend to believe that older patients have a lower tolerance for injuries of the same severity and increased ASA score may be a determinant of worsen outcome.

Talving P. et al. focused on the anatomical region injured, underlining that older patients, defined as greater than 55 years old, are significantly more likely to suffer severe head injuries, chest injuries, and spinal fractures(1). Dischinger et al. demonstrated that motorcyclists older than 40 years old show a significantly higher incidence of multiple thoracic injuries(21).

In our investigation, head injuries were the anatomic region most frequently injured overall. In the subset of severe injuries, chest injuries (33.1%) and head injuries (23.6%) were the most represented. By considering the group of critical injuries defined by an AIS 98' ≥ 3 , patients sustaining head trauma had a near 9-fold increased risk of death, whereas those sustaining chest and abdominal injuries had a 3.6-fold and a 2.4-fold increased mortality risk respectively. Older ages were associated with higher mortality and with a higher frequency of chest injuries with less severe head injuries. The thoracic cage of the elderly is more prone to costal and sternal fractures resulting in severe injuries to internal organs, which may be fatal. Given the atrophy of the brain in elderly patients, severe head injuries may evolve more slowly, as more blood is required to cause increased intracranial pressure. Younger patients have less atrophy and thus an even small bleed may progress to clinically significant increased intracranial pressure.

It is worth noting that on multivariate analysis, extremity injuries showed a correlation with a hypothetical improved prognosis (OR; 0,715; 95% CI: 0,574 – 0,89). This effect could be explained by the high number of extremity injuries, present in approximately 20% of the overall population, the majority of whom have survived.

In our sample mortality distributed in a bimodal fashion with a greater proportion of acute (within the first 48 hours) rather than early or late deaths confirming the findings of other authors in the current literature(22–26). The same trend was observed after stratifying the sample according to age, although in the older group the difference between acute and early/late mortality was less remarkable.

Many data available in the literature demonstrate improved survival of major trauma patients when treated in a dedicated trauma center showing a reduction in mortality rate, length of hospital stay and an improved physical function(27–30). MacKenzie et al. demonstrated besides that the overall risk of death for trauma injuries is significantly lower when care is provided in a trauma center(31). Although TRISS calculation has been largely questioned, it is still the most prominent method for trauma care benchmarking and the comparison between expected and observed survival is a good way to measure efficacy of care. Our data confirm the benefits of dedicated care at a trauma center and highlight an important survival benefit, more

evident in severely injured and older patients. This underlines the importance of a dedicated team composed of physicians and nurses skilled in the management of trauma.

To our knowledge, our study represents the largest single center representation of major motorcycle injuries at a Level 1 trauma center in Europe with the review of 1725 patient's data collected in a standardized registry during a 14-year period.

Nevertheless, some limitations exist in our study. A major concern could be raised considering that our data are not adequately weighted: especially in the older group, the influence of comorbidities on prognosis cannot be neglected. However, this type of data has started being gathered in the registry only since 2011, so our decision to not control for comorbidities is due to a lack of information in the database that eventually could alter the accuracy of the results. Finally, due to the non-homogeneous distribution of the sample among age groups (with most of the study population belonging to the young adults' group), the opportunity to investigate the effect of every anatomical region injured in each age group was precluded. Moreover, it's possible that a potential survivorship bias comparing young, adults and senior patients exists because in our database information about pre-hospital are unavailable.

due to an increase of the pre-hospital mortality

Moreover, the Trauma and Injury Severity Score (TRISS) was originally conceived in 1983 and in 2010, its coefficients were further revised(32,33). This scoring system is based on data obtained from north american trauma registries, the American College of Surgeons Committee on Trauma National Trauma Data Bank (NTDB) and the NTDB National Sample Project (NSP), with the latter reporting nearly 25% missing data. Despite being the most commonly used tool for benchmarking trauma outcomes, TRISS has important limitations that could account for such a wide difference in survival for patients sustaining critical injuries, especially those more than 55 years old(34,35).

Conclusions

Our findings show anatomical injury distributions and mortality rates among three age groups of patients involved in motorcycle trauma. The age of the patient is a predictor of death, and patients older than 55 years showed an increased mortality rate, more commonly secondary to chest injuries as compared with younger patients. This finding could suggest the necessity of a more aggressive treatment for this subset of patients. Our study further strengthens the importance of utilizing a Level I Trauma Center in the management of these patients as demonstrated by their improved survival rates.

List Of Abbreviations

AIS: Abbreviated Injury Scale

ISS: Injury Severity Score

RTS: Revised Trauma Score

PS: Probability of Death

TRISS: Trauma and Injury Severity Score

ASA: American Society of Anesthesiologists

OR: Odds Ratio

CI: Confidence Interval

NTDB: National Trauma Data Bank

NSP: National Sample Project

Declarations

Ethics approval: Given the retrospective nature of the study, a specific ethical review board approval was not required

Consent for publication: Not applicable

Availability of data and materials: The datasets generated and/or analysed during the current study are available from the corresponding author on reasonable request

Competing interests: The authors declare that they have no competing interests

Funding: This research did not receive any specific grant from funding agencies in the public, commercial, or not-for-profit sectors.

Authors' contributions: SG: designed the study, collected data, performed statistical analysis and drafted the manuscript. ER: collected data, drafted the manuscript. FB: collected data. FR: critically reviewed the manuscript. FS: critically reviewed and supervised the manuscript. SC: critically reviewed and supervised the manuscript. SG (Dr. Gupta): critically reviewed the manuscript and provided English revision. OC: designed the study, critically reviewed and supervised the manuscript. All authors read and approved the final manuscript.

Acknowledgements: Not applicable

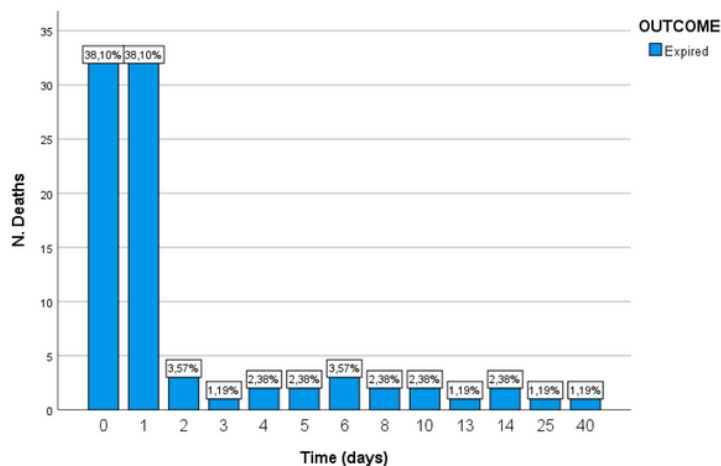
References

1. Talving P, Teixeira PGR, Barmparas G, DuBose J, Preston C, Inaba K, et al. Motorcycle-related injuries: Effect of age on type and severity of injuries and mortality. *J Trauma - Inj Infect Crit Care*. 2010;68(2):441–6.
2. De Rome L, Ivers R, Fitzharris M, Haworth N, Heritier S, Richardson D. Effectiveness of motorcycle protective clothing: Riders' health outcomes in the six months following a crash. *Injury*. 2012;

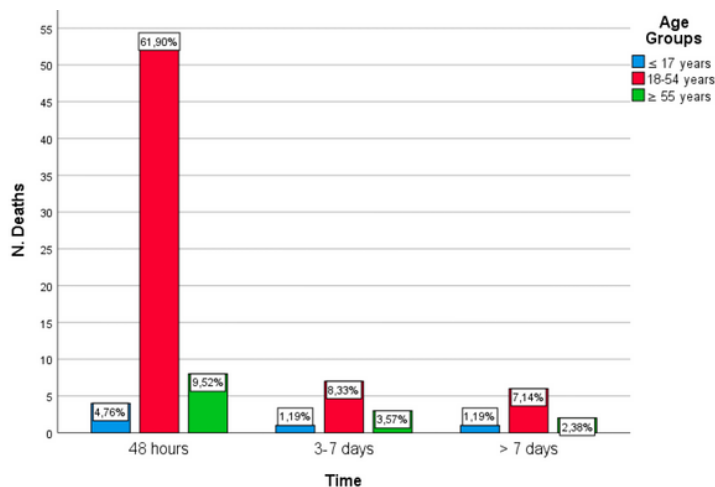
3. Rogers SC, Campbell BT, Saleheen H, Borrup K, Lapidus G. Using trauma registry data to guide injury prevention program activities. *J Trauma - Inj Infect Crit Care*. 2010;
4. Liang CC, Liu HT, Rau CS, Hsu SY, Hsieh HY, Hsieh CH. Motorcycle-related hospitalization of adolescents in a Level I trauma center in southern Taiwan: A cross-sectional study. *BMC Pediatr*. 2015;
5. Schneider IV WH, Savolainen PT, Van Boxel D, Beverley R. Examination of factors determining fault in two-vehicle motorcycle crashes. *Accid Anal Prev*. 2012;
6. Chung YS, Wong JT. Beyond general behavioral theories: Structural discrepancy in young motorcyclist's risky driving behavior and its policy implications. *Accid Anal Prev*. 2012;
7. Mullin B, Jackson R, Langley J, Norton R. Increasing age and experience: Are both protective against motorcycle injury? A case-control study. *Inj Prev*. 2000;6(1):32–5.
8. Rutter DR, Quine L. Age and experience in motorcycling safety. *Accid Anal Prev*. 1996;28(1):15–21.
9. Evans L. Risk of fatality from physical trauma versus sex and age. *J Trauma - Inj Infect Crit Care*. 1988;
10. Wladis A, Boström L, Nilsson B. Injuries in 8927 patients admitted after motor-cycle crashes in Sweden 1987-1994 inclusive. *Eur J Surg*. 2002;
11. Valent F, Schiava F, Savonitto C, Gallo T, Brusaferro S, Barbone F. Risk factors for fatal road traffic accidents in Udine, Italy. *Accid Anal Prev*. 2002;34(1):71–84.
12. Kyrychenko SY, McCartt AT. Florida's weakened motorcycle helmet law: Effects on death rates in motorcycle crashes. *Traffic Inj Prev*. 2006;7(1):55–60.
13. Peleg K, Kluger Y, Givon A, Alficci R, Jeroukhimov I, Klein Y, et al. Risk for motorcyclists in a busy metropolitan city: The example of Tel Aviv. *Isr Med Assoc J*. 2005;
14. Chiara O, Cimbanassi S, Andreani S, Sammartano F, Pizzilli G, Girotti P, et al. [The model of the Niguarda Hospital Trauma Team in Milan]. *Chir Ital*. 2008;
15. Chiara O, Pitidis A, Lispi L, Bruzzone S, Ceccolini C, Cacciatore P, et al. Epidemiology of fatal trauma in Italy in 2002 using population-based registries. *Eur J Trauma Emerg Surg*. 2010;36(2):157–63.
16. Demetriades D, Murray J, Sinz B, Myles D, Chan L, Sathyaragiswaran L, et al. Epidemiology of major trauma and trauma deaths in Los Angeles County. *J Am Coll Surg*. 1998;187(4):373–83.
17. Pennings JL, Bachulis BL, Simons CT, Slazinski T, Carrico CJ. Survival after severe brain injury in the aged. *Arch Surg*. 1993;128(7):787–94.
18. Kraus JF, Riggins RS, Franti CE. Some epidemiologic features of motorcycle collision injuries: II. Factors associated with severity of injuries. *Am J Epidemiol*. 1975;
19. Richter M, Pape H, Otte D, Krettek C. The Current Status of Road User Injuries Among the Elderly in Germany: A Medical and Technical Accident Analysis. 1998;58(3):591–5.
20. Boyd CR, Tolson MA, Copes WS. Evaluating trauma care: the TRISS method. Trauma Score and the Injury Severity Score. *J Trauma*. 1987;
21. Dischinger PC, Ryb GE, Ho SM, Braver ER. Injury patterns and severity among hospitalized motorcyclists: a comparison of younger and older riders. *Annu proceedings Assoc Adv Automot Med*. 2006;

22. Valdez C, Sarani B, Young H, Amdur R, Dunne J, Chawla LS. Timing of death after traumatic injury—a contemporary assessment of the temporal distribution of death. *J Surg Res* [Internet]. 2016;200(2):604–9. Available from: <http://dx.doi.org/10.1016/j.jss.2015.08.031>
23. Rauf R, von Matthey F, Croenlein M, Zyskowski M, van Griensven M, Biberthaler P, et al. Changes in the temporal distribution of in-hospital mortality in severely injured patients—An analysis of the TraumaRegister DGU. *PLoS One* [Internet]. 2019;14(2):e0212095. Available from: <http://www.ncbi.nlm.nih.gov/pubmed/30794579>
<http://dx.plos.org/10.1371/journal.pone.0212095>
24. de Kneegt C, Meylaerts SAG, Leenen LPH. Applicability of the trimodal distribution of trauma deaths in a Level I trauma centre in the Netherlands with a population of mainly blunt trauma. *Injury*. 2008;39(9):993–1000.
25. Frankel H, Urban J, Gunst M, Ghaemmaghani V, Shafi S, Gruszecki A. Changing Epidemiology of Trauma Deaths Leads to a Bimodal Distribution. *Baylor Univ Med Cent Proc*. 2017;23(4):349–54.
26. Sobrino J, Shafi S. Timing and Causes of Death After Injuries. *Baylor Univ Med Cent Proc*. 2017;26(2):120–3.
27. Dutton RP, Stansbury LG, Leone S, Kramer E, Hess JR, Scalea TM. Trauma mortality in mature trauma systems: Are we doing better? an analysis of trauma mortality patterns, 1997-2008. *J Trauma - Inj Infect Crit Care*. 2010;
28. Peitzman AB, Courcoulas AP, Stinson C, Udekwu AO, Billiar TR, Harbrecht BG. Trauma center maturation: Quantification of process and outcome. *Ann Surg*. 1999;
29. Celso B, Tepas J, Langland-Orban B, Pracht E, Papa L, Lottenberg L, et al. A systematic review and meta-analysis comparing outcome of severely injured patients treated in trauma centers following the establishment of trauma systems. *Journal of Trauma - Injury, Infection and Critical Care*. 2006.
30. Twijnstra MJ, Moons KGM, Simmermacher RKJ, Leenen LPH. Regional trauma system reduces mortality and changes admission rates: A before and after study. *Ann Surg*. 2010;
31. MacKenzie EJ, Rivara FP, Jurkovich GJ, Nathens AB, Frey KP, Egleston BL, et al. A National Evaluation of the Effect of Trauma-Center Care on Mortality. *N Engl J Med*. 2006;354(4):366–78.
32. Champion HR, Sacco WJ, Hunt TK. Trauma severity scoring to predict mortality. *World J Surg*. 1983;
33. Schluter PJ, Nathens A, Neal ML, Goble S, Cameron CM, Davey TM, et al. Trauma and Injury Severity Score (TRISS) coefficients 2009 revision. *J Trauma - Inj Infect Crit Care*. 2010;
34. Gabbe BJ, Cameron PA, Wolfe R. TRISS: Does It Get Better than This? *Acad Emerg Med*. 2004;11(2):181–6.
35. Hannan E, Mendeloff J, Farrell LS, Cayten CG, Murphy JG. Validation of TRISS and ASCOT using a non-MTOS trauma registry. *J Trauma*. 1995;

Figures



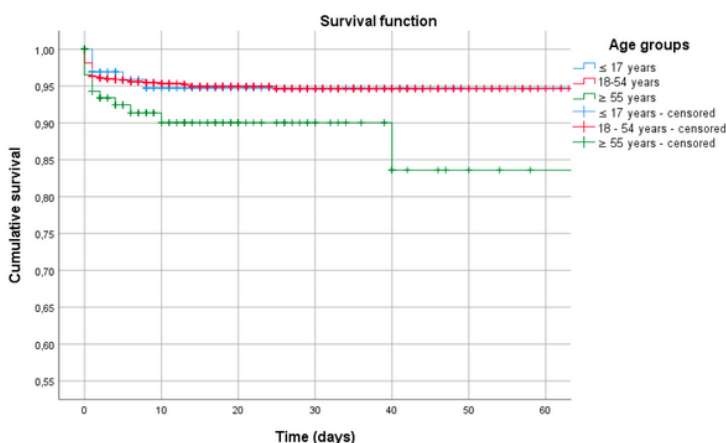
A



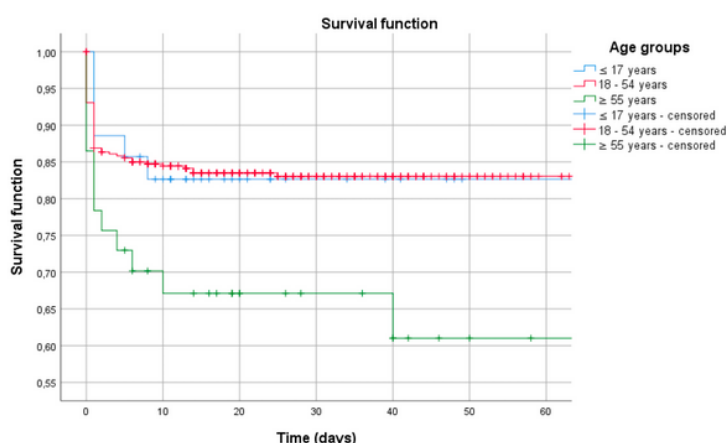
B

Figure 1

Mortality trend over time (A) and mortality distribution among age groups according to a previous study published by our group (B)(15)



A



B

Figure 2

The survival rate computed with Kaplan-Meier method was 99.9% in patients with an ISS ≤ 24 and 80.9% in more severely injured patients, with ISS ≥ 25 (Log Rank test: $p < 0.001$). Moreover, survival was different in the three age groups. Patients aging more than 55 years showed a significantly worse prognosis compared with younger patients (Log-Rank test: $p = 0.049$; Fig. 2A). The reduction in survival was more evident for patients older than 55 years old with ISS ≥ 25 (Log Rank test: $p = 0.021$; Fig. 2B), with a striking drop during the first ten days after trauma.