

Hypoalbuminemia for the Prediction of Survival in Patients with Organ Metastatic Cervical Cancer

Nobuhisa YOSHIKAWA (✉ n-yoshikawa@med.nagoya-u.ac.jp)

Nagoya University Graduate School of Medicine

Masato YOSHIHARA

Nagoya University Graduate School of Medicine

Satoshi TAMAUCHI

Nagoya University Graduate School of Medicine

Yoshiki IKEDA

Nagoya University Graduate School of Medicine

Akira YOKOI

Nagoya University Graduate School of Medicine

Hiroaki KAJIYAMA

Nagoya University Graduate School of Medicine

Research Article

Keywords: metastatic cervical cancer, hypoalbuminemia, prognosis, clinical biomarker, performance status

Posted Date: November 10th, 2021

DOI: <https://doi.org/10.21203/rs.3.rs-1048515/v1>

License:  This work is licensed under a Creative Commons Attribution 4.0 International License.

[Read Full License](#)

Abstract

We evaluated the prognostic significance of malnutrition in patients with metastatic cervical cancer. In this study, we retrospectively analyzed the cases of 43 patients with stage IVB (FIGO2018) cervical cancer treated at our institute during December 2004–December 2017. We determined the correlation between clinicopathological characteristics and survival by performing univariate and multivariate analyses. The serum albumin value at diagnosis was used as an index of malnutrition. The median follow-up period was 16.4 months (range, 0.9–91.4 months). On Kaplan-Meier analysis, the 1- and 2-year overall survival (OS) rates for all patients were 61.6% and 48.6%, respectively. The optimal serum albumin for predicting 1-year survival was 3.3 g/dL, as determined by the receiver operating characteristic curve to maximize the area under the curve. The overall survival (OS) of the patients with albumin >3.3 g/dL (n=28) was significantly better than that of the patients with albumin ≤3.3 g/dL (n=15) (p=0.0041). The multivariate analysis revealed that albumin and mode of primary treatment were significantly associated with survival in patients with stage IVB cervical cancer. Hypoalbuminemia was an unfavorable prognostic factor for patients with metastatic cervical cancer..

Introduction

There were approx. 570,000 new cases and over 310,000 deaths of cervical cancer worldwide in 2018 [1]. Despite the introduction of human papillomavirus (HPV) vaccine into national immunization programs and a high cover rate of Pap screening for the early detection of cervical cancer, this cancer remains a fatal disease for women [2]. Stage IVB (metastatic cervical cancer) with distant organ metastasis accounts for 5.5–8.4% of all cervical cancer stages, and the prognosis is remarkably severe [3-6]. Systemic chemotherapy, palliative radiotherapy, and best supportive care are the main treatments for metastatic cervical cancer, except for the minority of patients who respond to local treatment [3]. Because metastatic cervical cancer is relatively rare, studies are often designed to include not only metastatic cervical cancer but also persistent or recurrent cervical cancer after primary treatment [7]. However, metastatic cervical cancer is entirely different from persistent/recurrent cervical cancer after primary treatment in terms of sensitivity to treatment based on prior treatment. These two forms of cervical cancer should therefore be evaluated separately.

The FIGO staging system was revised in 2018 and now includes not only clinical findings; the system also incorporates surgical pathological findings and advanced imaging [8]. The frequency of stage IVB patients thus increased with the update of the staging system from version 2009 to version 2018 [9]. This has resulted in the inclusion of a broader group of patients at stage IVB, and treatment should be individualized based on the patient's general condition and metastatic status. However, there is no precise indicator that can point to the best treatment option.

Compared to early-stage cancer, advanced cancers' current treatments present increased risks of side effects and treatment-related deaths. The identification of prognostic markers based on the individual patient's general condition and nutritional status is thus essential for selecting the optimal treatment for

patients with advanced cancer, in order to maximize the possibility of a cure and to minimize side effects. It is especially desirable to be able to predict patients' survival and serious complications based on existing blood samples and imaging findings, which are valuable because of their versatility and immediate clinical applicability. For example, a patient's performance status (PS) is frequently used as a representative index reflecting the patient's general condition [10, 11]. Malnutrition and sarcopenia are often observed in patients with advanced cancer, and the severity of these two factors has been reported to correlate strongly with subsequent life expectancy. For example, the prognostic nutritional index (PNI), which is calculated using serum albumin levels and lymphocyte counts, was reported to correlate with long-term prognosis and perioperative complications in patients with various carcinomas [12-15].

There have been a number of studies of cervical cancer that used the PNI, but there are relatively few reports on prognostic factors for metastatic cervical cancer. We recently demonstrated that patients with metastatic cervical cancer who are sarcopenic at diagnosis have a poor prognosis [16]. To the best of our knowledge, there is no index that can predict the prognosis of a patients with metastatic cervical cancer in advance and thus contribute to the appropriate treatment options. We conducted the present study to determine the prognostic impact of the albumin value in patients with metastatic cervical cancer.

Results

A total of 43 patients were enrolled. The median follow-up period was 16.4 months (range, 0.9–91.4 months). The Kaplan-Meier analysis results revealed that the 1- and 2-year OS rates for all patients were 61.6% and 48.6%, respectively (Fig. 1a). The 1- and 2-year PFS rates were 25.0% and 16.7% (Fig. 1b). **(Figure 1. Near here)**

First, in our effort to identify one or more novel biomarkers related to long-term survival in this patient population, we performed an ROC analysis to compare four pre-treatment laboratory parameters: Hb, TWBC count, Plt, and albumin. The C-reactive protein (CRP) value was excluded from the analysis due to many missing data, but it showed a significant negative correlation with albumin (data not shown). We obtained the ROC curves to identify the optimal value of each valuable for predicting survival, and an ROC curve for 1-year survival. The maximum area under the curve (AUC) was 0.729 for albumin, and the optimal cutoff value for predicting 1-year survival was 3.3 g/dL (Fig. 2). The determined optimal cutoff value for albumin had 60.0% sensitivity and 78.6% specificity. **(Figure 2. Near here)**

We next divided the patients into two groups by using the albumin cutoff value 3.3 g/dL: the albumin-low group (albumin \leq 3.3 g/dL, n=15) and the albumin-high group (albumin >3.3, n=28). The clinicopathologic characteristics of all patients stratified into the two groups are shown in Table 1. Pre-treatment characteristics were similar between the two groups with the exceptions of the rate of locoregional extension of primary tumor (cT) and the primary treatment. Pre-treatment hypoalbuminemia was significantly associated with severe local progression of the primary tumor. **(Table 1. Near here)**

Table 2 summarizes the results of the univariate analysis of clinicopathologic variables that were potentially related to the patients' survival. For all 43 patients, albumin \leq 3.3 was significantly associated

with shorter OS (hazard ratio [HR] 3.26, 95% confidence interval [CI]: 1.35–7.67; $p=0.009$). Patients treated by CCRT had significantly longer survival compared to the patients who received other treatments (HR 3.26, 95%CI: 1.22–7.96; $p=0.020$). The multivariate analysis by Cox proportional hazard model revealed that the following two factors were significantly associated with favorable prognosis: albumin >3.3 (HR 4.39, 95%CI: 1.21–20.41; $p=0.023$) and CCRT as the primary treatment (HR 3.66, 95%CI: 1.22–10.82; $p=0.021$). No other parameters were identified as independent prognostic factors. **(Table 2. Near here)**

To evaluate the prognostic impact of pre-treatment hypoalbuminemia, we performed a Kaplan-Meier survival analysis: the 1-year OS rate in the albumin-low group was 26.1%, and that in albumin-high group was 77.4% (Fig. 3) ($p<0.05$). To examine whether the pre-treatment albumin value >3.3 is useful for selecting the patient's primary treatment, we conducted a survival analysis between patients who underwent CCRT and those treated with another therapy in albumin-high group. In the albumin-high group, the patients treated with CCRT had longer survival than those who received another treatment, but the difference was not significant ($p=0.129$). **(Figure 3. Near here)**

Discussion

We retrospectively analyzed the cases of patients with metastatic cervical cancer to investigate the significance of pre-treatment albumin for the prediction of overall survival. The results of a multivariate analysis demonstrated that the presence of hypoalbuminemia predicted a short survival time in this patient cohort. Our analyses also revealed that the patients with albumin >3.3 g/dL who underwent CCRT were likely to survive longer than the patients who underwent other treatments. Pre-treatment albumin is a useful biomarker to identify patients for whom CCRT can be expected to prolong survival.

Similar to the reports on other malignancies, the present results suggest that there is a strong association between pre-treatment serum albumin and the prognosis of cervical cancer patients. Hypoalbuminemia reflects a state of increased catabolism due to tumor-derived cytokines and tumor progression itself. In patients with malignant tumors, the serum albumin level tends to decrease because of malnutrition and systemic inflammatory responses. The present analysis demonstrated a significant negative correlation between albumin and CRP, which reflects systemic inflammation. Cachexia accompanied by hypoalbuminemia is a complex condition involving the tumor, the host response to the tumor, and anticancer therapy. Hypoalbuminemia has been reported to be associated with low quality of life (QOL) and increased risk of adverse effects induced by chemotherapy during the treatment for malignancies [17, 18]. A patient's pre-treatment serum albumin level may thus be a useful tool for estimating the patient's tolerance to treatment intensity and survival prognosis. It may also be useful to consider this value with regard to nutritional interventions to elevate a patient's albumin.

We recently reported that sarcopenia at diagnosis is a prognostic factor in patients with metastatic cervical cancer [16]. We also reported the prognostic value of the neutrophil-to-lymphocyte ratio in early-stage ovarian clear-cell carcinoma [19]. There have also been reports that sarcopenia, cachexia, and malnutrition in gynecological malignancies are useful in predicting prognosis [16, 20, 21]. In the case of

metastatic cervical cancer, it is often difficult to decide whether to choose radiotherapy, chemotherapy, chemoradiotherapy, or best supportive care as the primary treatment. The performance status according to the Eastern Cooperative Oncology Group is often taken into consideration, but this PS is sometimes felt to be less objective. The preoperative serum albumin is a more objective biomarker that adequately reflects cancer cachexia.

We also observed that CCRT as the primary treatment was efficient for improving the OS of the patients with distant metastases (HR 3.66, 95%CI: 1.22–10.82). Our hospital's policy was to choose CCRT as a general rule when the patient's symptoms due to physical weakness or distant metastasis were not severe. Our finding that CCRT was a favorable prognostic factor in this study may thus have been affected by selection bias. Past studies of the 5-year survival rate of stage IVB cervical cancer have reported rates at 5.5–8.4% [3-6]. Although it is difficult to make a simple comparison, the 5-year survival rate in this study was 35.7%, which is better than previously reported. This is due to high local control rate that 12 out of 32 patients treated with CCRT (37.5%) achieved complete response in locoregional tumor. This suggests the potential of CCRT for stage IVB cervical cancer with distant metastasis.

There are some study limitations to consider. It was a retrospective analysis, and bias and confounding factors were thus present. The small sample size (n=43) could have resulted in a type-II error. In clinical practice, patients with organ metastatic cervical cancer are very diverse, and it is necessary to take into account various parameters such as the mode of metastasis and the patient's general condition in order to determine the optimal treatment. Our findings are therefore merely hypothesis-generating, but our observation that albumin not only predicts the prognosis of patients with organ-metastatic cervical cancer but also indicates the possibility of more effective treatment for some patients with a promising long-term prognosis is of value. In other words, even in patients with organ-metastatic cervical cancer, if the albumin level is >3.3, CCRT may be more effective in prolonging life as the initial treatment. Prospective clinical trials in patients with organ metastatic cervical cancer using an albumin-based risk assessment are expected in the future.

In conclusion, in the present patient series, the malnourished patients (albumin \leq 3.3 g/dL) with organ metastatic cervical cancer had shorter survival than those with albumin >3.3 g/dL.

Methods

Study population

We retrospectively analyzed the cases (medical records) of patients with cervical cancer who were diagnosed at our hospital during the period December 2004 to December 2017. This study was approved by the Ethics Committee of Nagoya University. The institutional review board issued a waiver for patients' written informed consent because the study design was retrospective. Of the total of 838 patients with cervical cancer diagnosed during the study period, 45 (5.4%) were diagnosed with primary cervical cancer with organ metastasis by physical examination and/or imaging. Two cases with insufficient data were

excluded; a final total of 43 patients' cases were included. Patients with only para-aortic metastasis were excluded from this study.

Data extraction

We extracted the data from medical records regarding factors that may affect survival outcomes: age at diagnosis, body mass index (BMI) before treatment, type of histology, clinical TNM classification, mode of primary treatment (concurrent chemoradiotherapy [CCRT] or others), and the pre-treatment laboratory values including hemoglobin (Hb), total white blood cell count (TWBC), platelet count (Plt), albumin, and squamous cell carcinoma (SCC) antigen. In all cases, MRI and CT were performed for the evaluation of local progression and systemic metastases.

Treatment

The treatment strategy for each patient was determined by a conference consisting of several gynecologic oncologists and radiologists. CCRT was principally selected as the primary treatment to control locoregional tumors, even for patients with stage IVB cervical cancer. Another option such as radiation, systemic chemotherapy, or best supportive care was chosen as the initial treatment only when the patient desired a treatment other than CCRT, or when a treatment option other than CCRT was desired due to the patient's severe renal dysfunction or poor general condition based on PS. The CCRT consisted of external beam radiotherapy (EBRT) and intracavitary brachytherapy (ICBT). The standard EBRT dose was up to 50.4 Gy and was given as 1.8 Gy per dose 5 days/week. At our hospital, the effectiveness of EBRT was evaluated by MRI at the time of irradiation of approx. 36–39.6 Gy, and ICBT was performed using a remote after-loading system with a Co60 source for patients whose cancer was considered to be locally controllable. Concurrent chemotherapy was administered the same day as the beginning of the EBRT, and included 3–5 cycles of 5-fluorouracil (700 mg/m² for 4 consecutive days)/cisplatin (70 mg/m² on the first day) every 3 weeks. Other treatment options were RT alone, a hysterectomy followed by adjuvant CCRT or systemic chemotherapy, primary systemic chemotherapy, and palliative support.

Follow-up and definition of survival

A post-treatment follow-up was performed every 1–2 months during the first year, and less frequently after the second year if there were no signs of recurrence. The routine follow-up included a physical examination, transvaginal ultrasonography, and blood tests that included tumor markers. CT was performed at least every 3–6 months as a rule. The diagnosis of recurrence was based on CT images. Overall survival (OS) was defined as the time from the date of the patient's first treatment to the date of death for any reason or the patient's last visit to our hospital. Progression-free survival (PFS) was defined as the time from the date of the patient's first treatment to disease progression or death from any cause.

Statistical analyses

The statistical analyses were performed with JMP 14.0 software (SAS, Cary, NC). Based on a receiver operating characteristic (ROC) curve analysis, the cutoff value was determined to be the value that could detect survival at 1 year after the start of treatment with the highest sensitivity and specificity. This value

was determined to maximize the area under the ROC curve. Patient characteristics were compared between groups using the qualitative chi-square test and the quantitative T-test or Mann-Whitney U-test. The Kaplan-Meier method was used for the survival analysis. The p-value for comparison of survival rates between groups was calculated by log-rank test or Wilcoxon test. The multivariate analysis was performed using the Cox proportional hazard model to minimize the effect of any factors confounding bias on survival. A p-value <0.05 was considered significant.

Declarations

Acknowledgements

None

Author Contribution

NY: Data analysis, interpretation, and drafting manuscript

ST, MY, YI, AY: Data collection

HK: Supervision, revising manuscript

Institutional Review Board Statement

The study was conducted according to the guidelines of the Declaration of Helsinki, and approved by the Institutional Review Board of Nagoya University Hospital (2013-0078). Patient consent was waived because data collection was retrospective.

Acknowledgments:

The authors would like to thank the patients, their families, all other investigators involved in this study.

Conflicts of Interest

The authors declare no conflict of interest.

References

1. *International Agency for Research on Cancer GLOBOCAN2018*. 2018.
2. Kim, Han, Kim, and Seo, *Current Status of Human Papillomavirus Infection and Introduction of Vaccination to the National Immunization Program in Korea: an Overview*. *J Korean Med Sci*, 2018. **33**(52): p. e331.
3. Koh, Abu-Rustum, Bean, Bradley, Campos, Cho, Chon, Chu, Clark, Cohn, et al., *Cervical Cancer, Version 3.2019, NCCN Clinical Practice Guidelines in Oncology*. *J Natl Compr Canc Netw*, 2019. **17**(1): p. 64-84.

4. Saito and Katabuchi, *Annual Report of the Committee on Gynecologic Oncology, Japan Society of Obstetrics and Gynecology: Patient Annual Report for 2013 and Treatment Annual Report for 2008*. J Obstet Gynaecol Res, 2016. **42**(9): p. 1069-79.
5. Yamagami and Aoki, *Annual report of the Committee on Gynecologic Oncology, the Japan Society of Obstetrics and Gynecology*. J Obstet Gynaecol Res, 2015. **41**(12): p. 1861-9.
6. Nagase, Ohta, Takahashi, Enomoto, Committee on Gynecologic Oncology of the Japan Society of, and Gynecology, *Annual report of the committee on gynecologic oncology, the Japan Society of Obstetrics and Gynecology: Annual patients report for 2015 and annual treatment report for 2010*. J Obstet Gynaecol Res, 2019. **45**(2): p. 289-298.
7. Ishikawa, Nakamura, Shibata, Tanaka, Kitagawa, Kobayashi, Yaegashi, Grp, and Grp, *A randomized phase II/III trial of conventional paclitaxel and carboplatin with or without bevacizumab vs dose-dense paclitaxel and carboplatin with or without bevacizumab, in stage IVB, recurrent or persistent cervical carcinoma: Japan Clinical Oncology Group Study (JCOG1311)*. Japanese Journal of Clinical Oncology, 2018. **48**(12): p. 1096-1100.
8. Bhatla, Aoki, Sharma, and Sankaranarayanan, *Cancer of the cervix uteri*. Int J Gynaecol Obstet, 2018. **143 Suppl 2**: p. 22-36.
9. Grigsby, Massad, Mutch, Powell, Thaker, McCourt, Hagemann, Fuh, Kuroki, Schwarz, et al., *FIGO 2018 staging criteria for cervical cancer: Impact on stage migration and survival*. Gynecol Oncol, 2020. **157**(3): p. 639-643.
10. Mol, Ottevanger, Koopman, and Punt, *The prognostic value of WHO performance status in relation to quality of life in advanced colorectal cancer patients*. European Journal of Cancer, 2016. **66**: p. 138-143.
11. Bromwich, McMillan, Lamb, Vasey, and Aitchison, *The systemic inflammatory response, performance status and survival in patients undergoing alpha-interferon treatment for advanced renal cancer*. British Journal of Cancer, 2004. **91**(7): p. 1236-1238.
12. Guner, Kim, Yu, Min, Roh, Roh, Seo, Cho, Choi, Choi, et al., *Parameters for Predicting Surgical Outcomes for Gastric Cancer Patients: Simple Is Better Than Complex*. Ann Surg Oncol, 2018.
13. Sasahara, Kanda, Ito, Mochizuki, Teramoto, Ishigure, Murai, Asada, Ishiyama, Matsushita, et al., *The Preoperative Prognostic Nutritional Index Predicts Short-Term and Long-Term Outcomes of Patients with Stage II/III Gastric Cancer: Analysis of a Multi-Institution Dataset*. Dig Surg, 2019: p. 1-10.
14. Mirili, Yilmaz, Demirkan, Bilici, and Basol Tekin, *Clinical significance of prognostic nutritional index (PNI) in malignant melanoma*. Int J Clin Oncol, 2019.
15. Shimizu, Taniguchi, Asakuma, Tomioka, Inoue, Komeda, Hirokawa, and Uchiyama, *Lymphocyte-to-Monocyte Ratio and Prognostic Nutritional Index Predict Poor Prognosis in Patients on Chemotherapy for Unresectable Pancreatic Cancer*. Anticancer Res, 2019. **39**(4): p. 2169-2176.
16. Yoshikawa, Shirakawa, Yoshida, Tamauchi, Suzuki, Kikkawa, and Kajiyama, *Sarcopenia as a Predictor of Survival Among Patients With Organ Metastatic Cervical Cancer*. Nutrition in Clinical Practice, 2020. **35**(6): p. 1041-1046.

17. Seo, Kim, Kang, Ryoo, Ryu, Jeong, Kang, Yang, Lee, and Sung, *Association of nutritional status-related indices and chemotherapy-induced adverse events in gastric cancer patients*. *Bmc Cancer*, 2016. **16**.
18. Cella, Huang, Monk, Wenzel, Benda, McMeekin, Cohn, Ramondetta, and Boardman, *Health-related quality of life outcomes associated with four cisplatin-based doublet chemotherapy regimens for stage IVB recurrent or persistent cervical cancer: a Gynecologic Oncology Group study*. *Gynecol Oncol*, 2010. **119**(3): p. 531-7.
19. Yoshida, Yoshikawa, Shirakawa, Niimi, Suzuki, Kajiyama, and Kikkawa, *Prognostic value of neutrophil-to-lymphocyte ratio in early-stage ovarian clear-cell carcinoma*. *J Gynecol Oncol*, 2019. **30**(6): p. e85.
20. Aust, Knogler, Pils, Obermayr, Reinthaller, Zahn, Radlgruber, Mayerhoefer, Grimm, and Polterauer, *Skeletal Muscle Depletion and Markers for Cancer Cachexia Are Strong Prognostic Factors in Epithelial Ovarian Cancer*. *PLoS One*, 2015. **10**(10): p. e0140403.
21. Maccio, Madeddu, Gramignano, Mulas, Floris, Sanna, Cau, Panzone, and Mantovani, *A randomized phase III clinical trial of a combined treatment for cachexia in patients with gynecological cancers: Evaluating the impact on metabolic and inflammatory profiles and quality of life*. *Gynecologic Oncology*, 2012. **124**(3): p. 417-425.

Figures

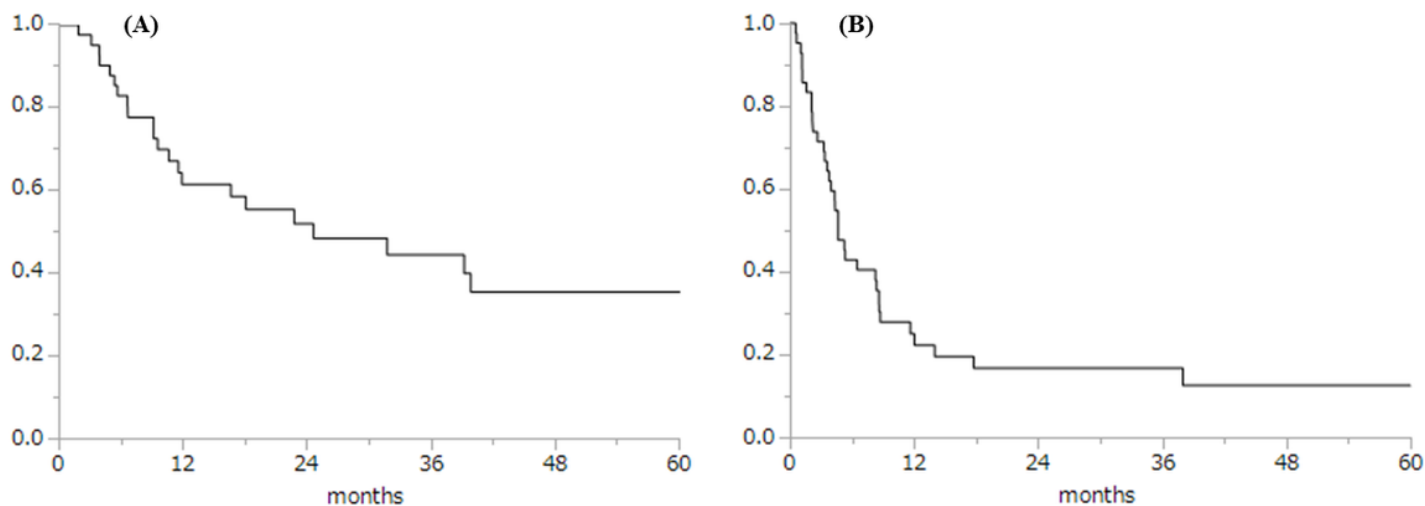


Figure 1

Kaplan-Meier curves showing overall survival (OS) and progression-free survival (PFS) in all patients. The 1- and 2-year OS rates for all patients were 61.6% and 48.6%, respectively (A). The 1- and 2-year PFS rates were 25.0% and 16.7%, respectively (B).

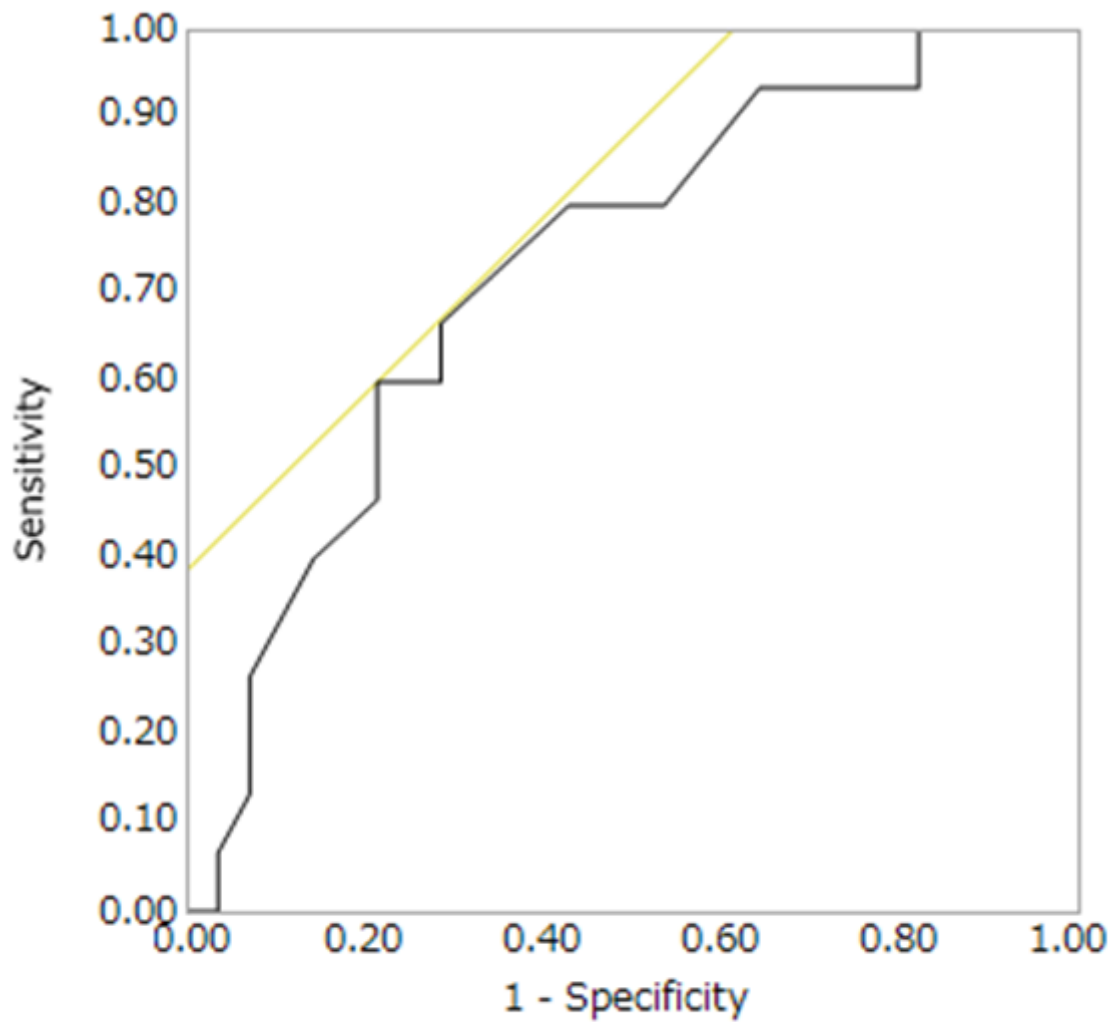


Figure 2

Receiver operating characteristic curve analysis of pre-treatment serum albumin. The AUC for tumor dia. in the greatest dimension was 0.7296.

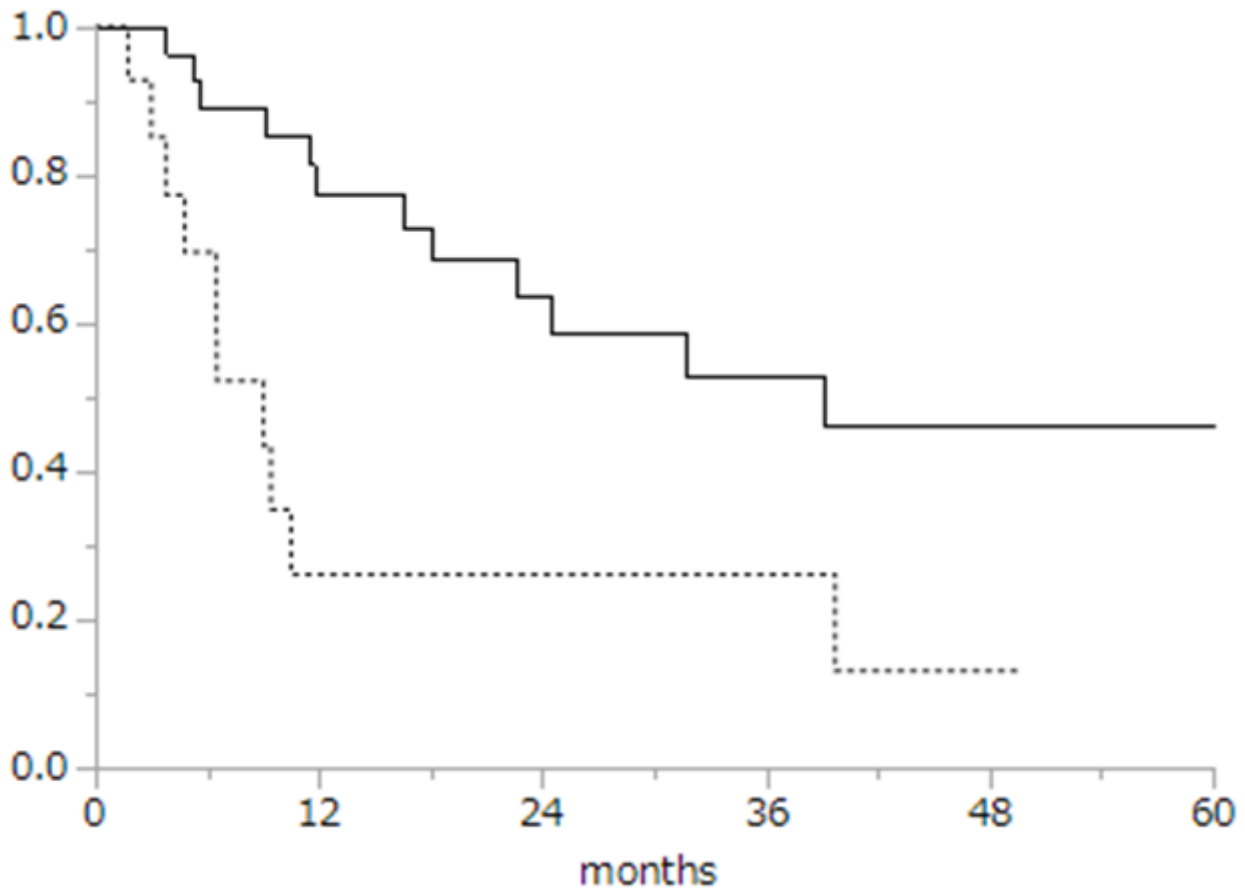


Figure 3

Kaplan-Meier curves showing overall survival (OS) stratified by pre-treatment serum albumin. The 1-year OS rate in the albumin-low group (—) was 26.1%, and that in the albumin-high group (—) was 77.4% ($p < 0.05$).