

# The correlation of tuberculosis smear results and immuno-suppression with CD4+ counts as a surrogate marker among HIV infected patients.

Kingsley Kamvuma (✉ [kamvumak@yahoo.com](mailto:kamvumak@yahoo.com))

Mulungushi university

Yusuf ademola

Mulungushi University

Warren Chanda

Mulungushi University

Christopher Newton Phiri

Mulungushi university

Sam Bezza Phiri

Mulungushi University

Miyoba Mitchelo

Mulungushi University

John Amos Mulemena

Mulungushi University

---

## Research Article

**Keywords:** TB, HIV, CD4, smear, patients

**Posted Date:** November 9th, 2021

**DOI:** <https://doi.org/10.21203/rs.3.rs-1060928/v1>

**License:**  This work is licensed under a Creative Commons Attribution 4.0 International License.

[Read Full License](#)

---

**Version of Record:** A version of this preprint was published at Acta Scientific Microbiology on January 10th, 2022. See the published version at <https://doi.org/10.31080/ASMI.2022.05.0995>.

# Abstract

**Background:** Human immunodeficiency virus (HIV) and *M.tuberculosis* are two intracellular pathogens that interact at the cellular, clinical and population levels. Since the recognition of AIDS in 1981, the number of reported cases of TB in the has increased substantially, especially in regions with high incidence of AIDS. The main aim of this study was to establish weather there is a relationship between sputum smear positives and low CD4 cell counts among HIV infected patients.

**Materials and methods:** This was a retrospective study involving 473 participants. The patients recruited in this study were those who tested HIV positive and smear positive for TB. Their HIV status was determined by performing an HIV blood test, if they were HIV positive their CD4 cell count were then made.

**Results:** This study examined the relation between smear positivity and low CD4 (below 200cells/ $\mu$ l) together with CD8 and CD3 markers as a measure of immune function among patients infected with HIV. The study participants' constituted males 67% and females 33%. The overall mean age was 33.2 (SD 6.9) with the youngest and oldest participants being 18 and 60 respectively. It was found that smear positive results negatively ( $r=-0.13$ ;  $p=0.021$ ) correlated with CD4+ below 200 cells/ $\mu$ l. No correlation was observed between smear positives and CD8+ or CD3+ since the calculated correlation coefficient was not significant 0.007 ( $p=0.9$ ) and 0.03 ( $p=0.6$ ) respectively. There are more 3+ smear results below 200 cells/ $\mu$ l than the others while above 200 cells/ $\mu$ l 1+ was the most commonly reported smear result. The scanty smear positives were the least commonly reported result in the low and high CD4 counts.

**Conclusion:** The smear positive result negatively correlated with a low CD4+ ( $r=-0.13$ ;  $p=0.021$ ) but no correlation with low CD+8 and CD+3 results was observed. The long held theory that low bacillary counts in patients with low CD4+ counts needs to be revisited. The reduction of CD4+ cell count parallels' that of the total lymphocyte count and is more marked in patients with high bacillary counts. Further, studies are required to confirm these findings

## Introduction

### 1.1.0 Background

After decreasing throughout the twentieth century, the incidence of tuberculosis (TB) in the world increased in the late 1980s. The acquired immunodeficiency syndrome (AIDS) has played a central role in this increase. Since the recognition of AIDS in 1981, the number of reported cases of TB in the has increased substantially, especially in regions with high incidence of AIDS. One-third of the world's population is already infected with TB, with the greatest burden of the disease and infection borne by people in developing countries particularly high in sub Saharan Africa directly attributed to 20% increase in incidence, the region most affected by HIV/AIDS. It is estimated that less than half of all TB cases worldwide are diagnosed and fewer than 60% of diagnosed patients are cured. Projections of the future toll of the global TB pandemic are even more frightening. Without unprecedented efforts to improve TB

control in regions hardest hit by the disease, the incidence are expected to increase steadily. (sarder NU, et al. 2006)

Due to the alarming spread of Human immunodeficiency virus (HIV) and the emergence of drug resistance, tuberculosis (TB) is still out of control. The rate of breakdown to clinical TB much higher in patients co-infected with TB and HIV than those without TB (sarder NU, et al. 2006). Tuberculosis remains as the leading opportunistic infection and cause of death among HIV-infected subjects in resource-limited settings. The management of TB-HIV co-infection constitutes a great challenge for health care systems. Often, HIV infection is first detected when patients are diagnosed with active TB, and many such patients have advanced immune-suppression. However, TB can also occur in individuals with relatively well preserved CD4 cell counts, especially in areas with high TB endemicity

Complications of HIV are as a result of suppression of T Cell mediated immunity. T cell mediated immunity is important in defence of host against intracellular infections such as viral infections and some bacterial infections such as tuberculosis. The constituents of the cell mediated immunity system include macrophages which present antigens to T cells; helper T cells participates in recognising antigens and regulatory functions; natural killer cells which inactivate pathogens and cyto-toxic T cells which can kill virus infected cells with or without antibodies. Both macrophages and helper T cells produce cytokines that activate or sensitize helper and cyto-toxic T cells to, kill pathogens or tumor cells (Warren L, et al. 2008).

A critical marker of immunologic integrity is the CD4 cell count, and the manifestations of tuberculosis vary with the CD4 cell count in HIV-positive patients with tuberculosis. As HIV infection progresses, CD4+ lymphocytes decline in number and function. Therefore, the immune system is less able to prevent the growth and local spread of *M. tuberculosis*. As a result, the disease spreads to other parts of the body causing disseminated tuberculosis. Nevertheless, pulmonary TB the most common form of TB even in HIV infected patients since it occurs in 70-90% of all patients with TB. The pathogenesis of both tuberculosis infection and the disease relates directly to cell mediated immunity (CMI) (BE Jones, et al. 1997). Especially CD4+ T lymphocytes. Not surprisingly, HIV infection which induces CD4+ T-lymphocytes depletion, also leads to defective immunological response to *M. tuberculosis*. The pathogenesis of TB can be altered by HIV either through reactivation of latent tuberculosis infection to active disease (more common) or by causing rapid progression from recent infection with *M.tuberculosis* to tuberculosis disease (sarder NU, et al. 2006TB is an important cause of death in HIV-infected patients.

In Zambia 70% of TB patients are HIV positive (CBH. 2009). The country is currently estimated to have the ninth highest TB incidence in the world and an HIV prevalence of 14.3% countrywide, 22% in the capital, Lusaka ([www.cidrz.org](http://www.cidrz.org) 2012). Though some studies have been done on the relationship between these two infections at UTH more studies are required to find the best preventive strategies to counteract the effects of the two epidemics.

The frequent co-existence of TB and HIV the same individual implies the need to understand the associations of TB and HIV clearly and manage both conditions simultaneously. Patients with low CD4+

count have high risk of mortality and morbidity. TB can occur in both HIV negative and positive patients but Infection with HIV has increased the incidence of TB since it activates dormant TB. TB can be treated if prescribed therapy is followed properly. The major problems in treatment of TB infections include lack of compliance to prescribed drugs by patients and development of resistance against anti-TB.

## **Methodology**

### **4.1.0 Study site and population**

This study was conducted from WHO/TDR TB-HAART Project at Adult Infectious Disease Centre a research institution located within the University Teaching Hospital (UTH). The study was a retrospective study design conducted from October, 2010 to march, 2011. The data was obtained from the database dating back from 2008 to February, 2011.

The project recruited 473 participants and a purposive sampling method was used to include participants in the study. The sample size was arrived at after taking into consideration the resources available, labour, transport and the limited time period available in which the project was to be done.

### **4.2.0 Recruitment settings**

Both males and females between 16-60 years were to be recruited in this study and accessed from various clinics around Lusaka.

#### **4.2.1 Eligibility criteria**

Patients were eligible to participate in the study if they tested HIV positive; have tested smear positive for tuberculosis and consented to be included in the study.

#### **4.2.2 Exclusion criteria**

Participants were excluded if they either have not tested smear positive for tuberculosis or are not HIV positive.

### **4.3.0 Data collection**

The patients who were recruited in this study are those who are HIV positive and test smear positive for TB. They were either admitted to in their various clinics or send home after being given drugs and come for continuous monitoring from time to time to obtain their CD4 cell count and for a drug refill. Their HIV status was determined by performing an HIV blood test, if they tested HIV positive their CD4 cell count was then be made. Diagnosis of TB was made by microscopic examination, using fluorochrome stain to demonstrate the presence of tubercle bacilli bacteria from sputum specimens in the TB laboratory and count the number of AFB per oil immersion field. All the results were recorded for analysis.

### **4.4.0 Laboratory procedures**

Venous blood was collected into EDTA containers for CD4 counts using the BD FACSCalibur in the Virology Laboratory. Blood samples for HIV testing were collected in plain containers for HIV testing.

The national HIV testing Algorithm which uses Abbot Determine and Unigold as first line tests and SD Bio-line as a tie breaker was followed. All specimens that were reactive for Abbot Determine were then confirmed with Unigold and if any such specimens tests differently on the Unigold, Bio-line was used as a tie breaker. The results of the Bio-line were then accepted as final.

For enumeration of CD4 T Lymphocytes flow cytometry the BD FACSCalibur was utilised.

Detection of TB was done by microscopic demonstration of tubercle bacilli tuberculosis from sputum smears that was obtained from the patients who were HIV positive.

#### **4.5.0 Data analysis**

All collected data was entered onto computer and spss version 16 software was used for analysis. Graphs, table, cross tables, means and correlation coefficient were calculated. The test of association between variables and factors was used for analysis and probability values were used for statistical significance.

#### **4.6.0 Ethical considerations**

Authorisation to conduct the project in virology and the TB laboratories was obtained from the Hospital management before embarking on the project. Authorisation to use the data from adult infectious disease centre was also obtained.

With respect to patient confidentiality the information obtained from each participant will not be published. Anonymity of patients was ensured since names, physical address or any other identity or contact details will not be obtained and test results will not be identified with a particular participant. Each specimens will be identified by use of codes.

## **Results**

### **5.1.0 Demographic description of the study population**

A total of 473 participants who were both sputum positive and HIV positive were recruited into the study, 317 (67%) being males and 156 (33%) females with the youngest and oldest participant being 18 and 60 years of age respectively. The overall mean age was 33.2 years (SD 7.1years).The females were younger (mean age 32( SD 8) years) than males (mean age 34 (SD 6)years). These demographic profiles are given in **table I**.

### **Table 1**

	Number	Minimum age	Maximum age	Mean	Std. Deviation
All the patients	473	18	60	33.20	7.117
Males	317	18	58	33.79	6.414
Females	156	20	60	31.97	8.271

**Figure: 1** below shows the age of participants recruited into the study. The majority of TB/HIV CO-infected patient were in the 25 to 40 years age group, the age group with high incidence of HIV infection.

### 5.2.0 Laboratory characteristics of the study population

As shown in **table 2a** the mean CD4 cell count for the 473 patients was  $185.0 \pm 183$  cells/ $\mu$ l. 343 (72.5%) patients had low CD4 cell count (below 200 cells/ $\mu$ l), and 130 (27.5%) patients had a high CD4 cell counts (above 200 cell/ $\mu$ l), The CD8 cell count was lower in patients with low CD4 cell counts (mean cd8 672.7 cells/ $\mu$ l) (see **table 2b**) than in patients with high CD4 cell counts (mean cd8 967.6 cell/ $\mu$ l) (see **table 2c**). The cd3 T lymphocyte count was also lower in patients with low CD4 cell counts (mean cd3 823.7cells/ $\mu$ l) than in patients with high CD4 cell counts (mean cd3 1466.2cells/ $\mu$ l).

**Table 2a**

The table describes the overall results for cd4, cd8 and cd3

	N	Minimum	Maximum	Mean	Std. Deviation
cd4 results	469	2	1101	183.91	183.224
cd8 results	469	48	3016	752.37	484.050
cd3 results	469	87	3500	999.02	642.184
Valid N (listwise)	469				

**Table 2b**

The table describes statistically the results with CD4 below 200 cells/ $\mu$ l

	N	Minimum	Maximum	Mean	Std. Deviation
cd4 results	341	2	200	99.42	60.981
cd8 results	341	48	3016	672.74	452.121
cd3 results	341	87	3500	823.66	529.534
Valid N (listwise)	341				

**Table 2c.**

The table describes statistically the results with CD4 above 200 cells/ $\mu$ l

	N	Minimum	Maximum	Mean	Std. Deviation
cd4 results	128	201	1101	408.99	208.630
cd8 results	128	214	2000	964.52	503.770
cd3 results	128	549	3500	1466.17	683.009
Valid N (listwise)	128				

The relationship between CD4 cell counts and smear positive result for tuberculosis was analysed using correlations. To describe the strength of association between variables the Pearson product moment coefficient was utilised for analysis. There was a negative correlation between the smear results and CD4 cell counts below 200 cells/ $\mu$ l ( $r=-0.13$ ,  $P=0.021$ ). The negative sign implies that high scores on one variable is associated with low scores on the other. There was no correlation between smear results and

cd8 or cd3 since the calculated correlation coefficient was 0.007 for cd8 (p=0.9) and 0.03 for cd3 (p=0.6) respectively.

**Table 3a:**

Correlations for smear positives and low CD4 (below 200 cells/ $\mu$ l).

	smear results	cd4 results	cd8 results	cd3 results
smear results Pearson Correlation	1	-.125*	.007	.027
Sig. (2-tailed)		.021	.900	.620
N	343	343	341	341

\*. Correlation is significant at the 0.05 level (2-tailed).

In **Table 4** the strong positive correlation indicates that the lower Cd4 correlates with lower Cd3 and higher Cd4 correlates with higher cd3.

**Table 4:** The shows the correlation of CD4 results and CD3 results.

**Correlations**

	cd4 results	cd3 results
cd4 results Pearson Correlation	1	.572**
Sig. (2-tailed)		.000
N	473	469
cd3 results Pearson Correlation	.572**	1
Sig. (2-tailed)	.000	
N	469	469

\*\* . Correlation is significant at the 0.01 level (2-tailed).

**Figure: 2** below shows the most commonly reported smear result for patients with low cd4 cell counts (below 200 cell/ $\mu$ l). As can be seen the smear result of 3+ is the most commonly reported result with a frequency 120 of 343 representing 25.4%. It is followed by 1+ with a frequency 104 of 343 (22%), smear result of 2+ had frequency of 95 of 343 (20%) and the smear results reported as less than 1+ was the least reported result with a frequency only 24 of 343 (5.1%) .

In **figure: 3** shown below the smear results reported for patients with high cd4 count (above 200cell/ $\mu$ l) were presented on a frequency table to find the most frequently and least reported result. We can see that



a smear result of 1+ with a frequency 40 of 130 results (30.8%) is the most commonly reported while the least commonly reported result was for less than 1+with 24 of 130 results (18.5%).

## Discussion

Human immunodeficiency virus (HIV) and *M.tuberculosis* are two intracellular pathogens that interact at the cellular, clinical and population levels. Mounting immunologic and virologic evidence indicates that the host immune response to *M. tuberculosis* enhances HIV replication and accelerate the progression of HIV infection (sardar N.U, et al. 2006). Therefore, understanding the interaction between these two pathogens at cellular level will have important implications on disease progression and treatment. If MTB multiplies there will more MTB which the immune system has contain, enhancing further viral replication which infects and destroys more CD4 T cells. As was shown in this study a low CD4 count was associated with high smear count for tuberculosis among patients with HIV. There is a negative correlation between the sputum smear results and CD4 cell count ( $r=-0.13$ ,  $p=0.021$ ) though the strength of association was not significant. This implies that a high positivity result such as 3+ result correlates with lower values of CD4 cell counts.

The lack clear correlation can be attributed to factors apart from HIV infection and TB disease that may affect CD4 cell count. In fact, in one particular study it was reported that in patients with HIV infection, the frequency of positive acid-fast smears was independent of CD4 cell counts (Robert L, et al. 2011). To illustrate the reason for this; if we have two patients both affected by TB/HIV, the first patient receives moral support from family, friends , support groups etc and financially stable to afford a balanced diet and the second patient is facing stigma from family and friends and because of poverty cannot afford a meal or hospital bills. The first patient will have a raise CD4+ cell count compared to the second patients at same stage of tuberculosis disease. Two important factors can attributed to this; psychological stress further depresses the immune system and lack of a balanced diet to boost the immune system leads to further reduction of the immune system's strength.

In addition to these factors which affect the CD4 cell counts many factors influence the distribution sputum smear results apart from the extent of tuberculosis disease. These may include the quality of the sputum produced, use of compromised stains or a poor staining technique, the integrity of the microscope's optical system, or the amount of time spent on examination. Therefore, a multitude of factors thus influences the reported sputum smear result. This study has indicated that scanty positive results are the least commonly reported result in both low and high CD4 counts this may because be Low bacillary counts are more difficult than higher counts to find in microscopic sputum examination, and if less time is spent examining them, they are more likely to be missed.

There is no correlation between sputum smear results and cd8 of (0.007,  $p=0.9$ ). This is consistent with the results of a study in which the relationship between laboratory presentation of TB and cd4 cell counts was investigated. They found that CD8 cell counts did not correlate with the manifestations of tuberculosis (Jones BE et al,1993). Cd3 also did not correlate with smear results.

Patients with disseminated tuberculosis disease have a general increase in organism burden and, specifically, to the lung's place as the original site of infection (Robert L, et al. 2011). This suggests that these patients will have a high sputum smear result i.e. 3+ because of the increase organism burden. Because of increase in the burden of MTB their cd4 there will be further depressed this observation is consistent with findings of this study since 25.4% of patients with cd4 below 200 cells/ $\mu$ l reported smear result of 3+ compared to 5.1% reported for those with smear result of <1+.

## 8.0.0 RECOMMENDATIONS

The prevalence TB/HIV co-infection is high in the country. The co-existence the two infections in the same individual requires management of both diseases simultaneously. Therefore, understanding them at cellular, clinical and population level will help to generate strategies to prevent, improve diagnosis and treatment or treat the two infections simultaneously. With such potential benefits to medicine, it is recommended that stakeholders such as adult infectious disease research centre or the ministry of health to implement a study on a large scale.

Severity of tuberculosis disease cannot be determined by smear results only, hence a study related to this one must take into consideration other factors which help in diagnosis and determine the extent of tuberculosis disease i.e. culture, X ray, BMI etc.

It has been noted from this study that scanty smear positives were the least commonly reported result in both low and high CD4 cell counts. This has been attributed to less time spent examining the specimens. This can be avoided by ensuring that procedures or standards followed properly before a smear can be reported as negative.

During the study it observed that negative sputum smear results had depressed CD4+ T lymphocytes and total T lymphocytes counts. This may because an infection viral or bacterial other than *Mycobacterium tuberculosis* causing the depression. Despite *M. Kansasii* being antigenically and clinically related to *M. Tuberculosis* (Bloch KC, et al.1998), very little information is available on the it's impact, mechanism of immune evasion and on what constitutes a protective immune response against it. A study is highly recommended which will determine what causes low CD4 cell counts in HIV positive patients with negative smear result for tuberculosis but with signs and symptoms similar to tuberculosis disease.

## Conclusion

The smear positive result negatively ( $r=-0.13$ ,  $p=0.021$ ) correlated with a low cd4 but no correlation with low CD8+ and CD3+ results was observed. The long held theory that low bacillary counts in patients is associated with low CD4+ counts needs to be revisited. Many factors influence CD4+ counts these include socio-economic factors or may be due to an underlying disease e.g. a parasitic infection such as malaria, or may be as a result of technical incompetences. The reduction in CD4 cell count parallels' that of the total lymphocyte count and is more marked in patients with severe tuberculosis. A high smear count of 3+ is the most commonly reported result for patients with CD4 below 200 implying that the

lower the CD4 count the higher the organism burden while 1+ was most commonly reported in higher CD4 counts.

## References

1. Bloch KC, Zwerling L, Pletcher MJ *et al.* **Incidence and clinical implications of isolation of *Mycobacterium kansasii***: results of a 5 year, population based study. *Ann Intern Med* 1998; 129:698-704.
2. Brenda E. Jones, Maung M. Oo, Edna K. Taikwel, Dajun Qian, Anshu Kumar (1997) **CD4 Cell Counts in Human Immunodeficiency Virus-Negative Patients with Tuberculosis.** *CID*
3. Central Board Health (CBH), (2009). **Annual Health Statistical Bulletin**, Central Board Health, Lusaka.
4. Elliot AM, Hayes RJ, Halwindi B, Luo N, Tembo G, Pobee JO (1993). **The impact of HIV on infectiousness of pulmonary tuberculosis.** *Pubmed.org*
5. Immunology lecture notes. 2009
6. Jayne S Sutherland, James M Young, Kevin L Peterson (2004). **Polyfunctional CD4 and CD8 T cell Responses to TB antigens in HIV-1 infection before and after Anti-Retroviral Treatment.**
7. Jones BE, Young SM, Antioniskis D (1993), **Clinical presentation of TB and CD4 cell Count in Patient with HIV.** *Journal Watch General Medicine.*
8. Nadia caccomo, guliana Guggimo, Gulsepe Gelsimo, Paolo di Carlo (2010), **Multifunctional CD4 Tcells correlates with mycobacterium tuberculosis infection.** *European journal of immunology* .Volume 40, pages 2211-2220.
9. 1Sarder Nasir Uddin, 1S.J.Hossain, 1Md. N. Huda, 1M.H. Rahman, (2006) **Consequence on Treatment of TB Patients Affected by HIV/AIDS. A Conceptual Research.** *American Journal of Infectious Diseases 2 (4): 210-218*
10. Robert L. Smith, M.D., F.C.C.P.; Kenneth Yew, B.A.; Kenneth A, (2011) **Factors Affecting the Yield of Acid-fast Sputum Smears in Patients With HIV and Tuberculosis.** *American college of chest physicians. Chestjournal*
11. Toossi Z, Mayanja-kizza, H,Hirsch, Whalen C, (2001), **Impact of tuberculosis (TB) on HIV-1 activity in dually infected patients.** *The journal of translational immunology.*
12. Wade AA, Mendelsohn D, Rabson AR (1983). **Characterisation of a suppressor cell-activating factor (SCAF) released by adherent cells treated with *Mycobacterium tuberculosis*.** *J immunol* volume 130: pages 2266-70.
13. Warren L (2008).**Review of Medical Microbiology and Immunology.** Tenth Edition, New York: Mc Graw Hill.
14. World Health Organisation (2008). **World Health Reports.** World Health organisation, Geneva.
15. World Health Organisation (2009). **TB/HIV FACTS.** World Health Organisation, Geneva.
16. [www.cidrz.org](http://www.cidrz.org)

# Declarations

Competing interest The authors declares that they have no competing interest.

Funding The authors conducted the study without external funding

Authors' contributions KK, conceived and designed the study. KK and SBP collected the data. KK was responsible for coordination and implementation of study. JAM, WC, MM, SBP, YA, CNP and KK conducted data analysis and article writing. All authors read and approved the final manuscript.

Consent for publication All the authors have read and approved submission of this research article

# Figures

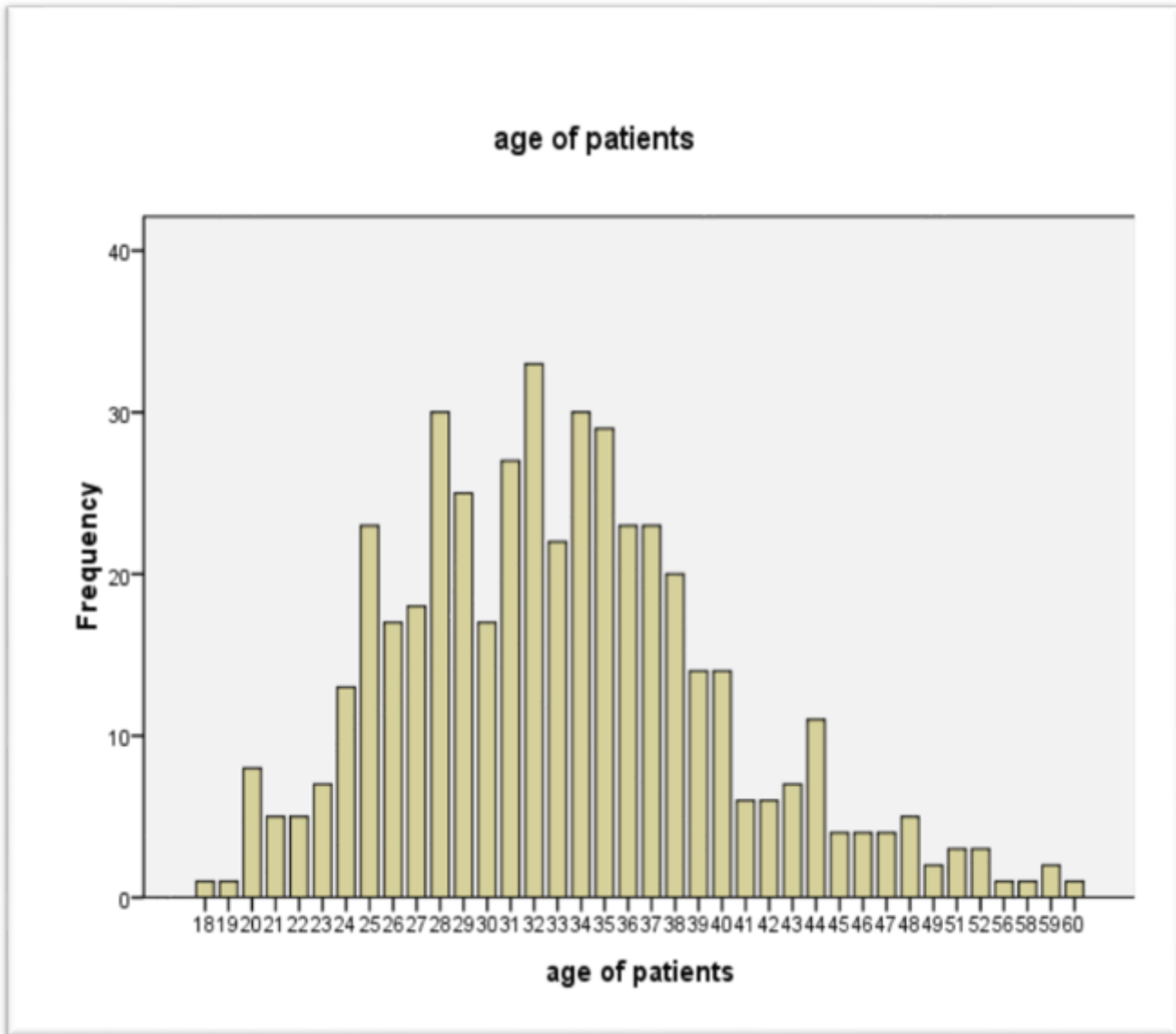
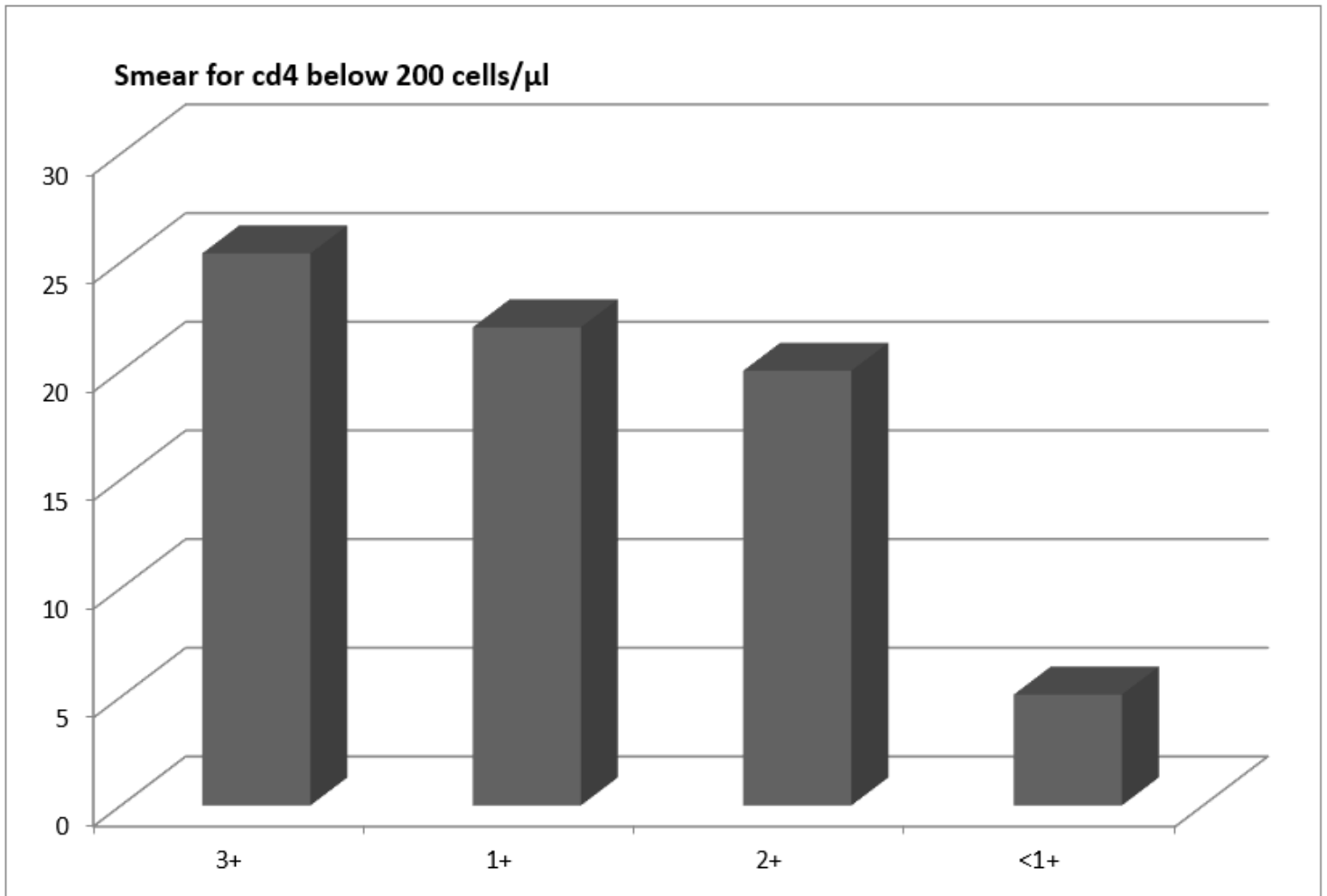


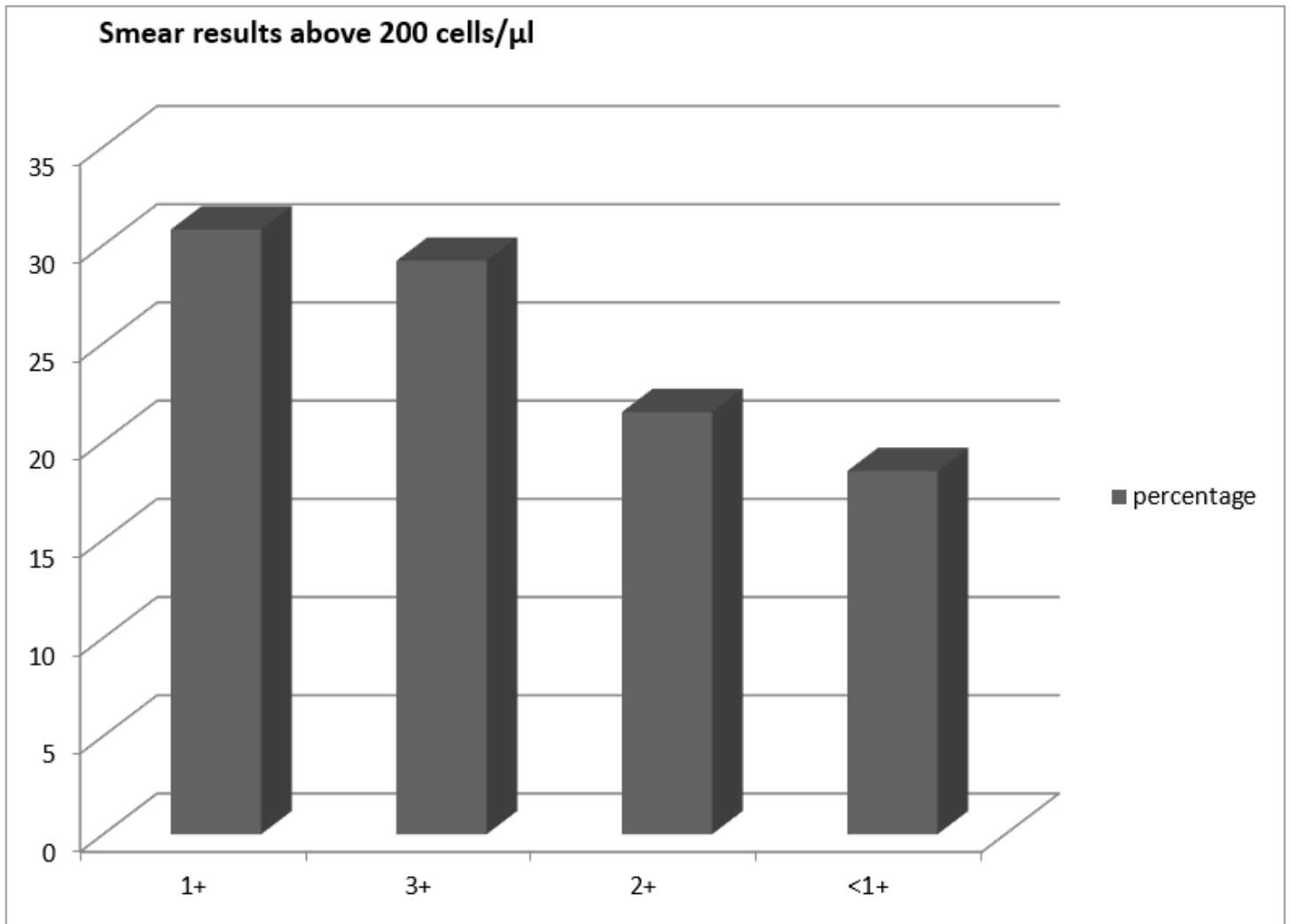
Figure 1

age of participants recruited into the study



**Figure 2**

most commonly reported smear result for patients with low cd4 cell counts (below 200 cell/μl)



**Figure 3**

smear results reported for patients with high cd4 count (above 200cell/μl)