

Functional Outcomes of Cochlear Implantation in Children with Bilateral Cochlear Nerve Aplasia

Goun Choe

Seoul National University Hospital

Young Seok Kim

Seoul National University Hospital

Myung-Whan Suh

Seoul National University Hospital

Moo Kyun Park

Seoul National University Hospital

Seung-Ha Oh

Seoul National University Hospital

Sang-Yeon Lee (✉ maru4843@hanmail.net)

Seoul National University Hospital

Jun Ho Lee

Seoul National University Hospital

Research Article

Keywords: Cochlear nerve, cochlear implantation, cochlear implantation

Posted Date: November 29th, 2021

DOI: <https://doi.org/10.21203/rs.3.rs-1094510/v1>

License:   This work is licensed under a Creative Commons Attribution 4.0 International License.

[Read Full License](#)

Abstract

Many otologists face a dilemma in the decision-making process of surgical management of patients with cochlear nerve (CN) aplasia. Currently, evidence on cochlear implantation (CI) outcomes in patients with CN aplasia is limited. We scrutinized functional outcomes in 37 ears of 21 children with bilateral CN aplasia who underwent unilateral or bilateral CI based on cross-sectional and longitudinal assessments. The Categories of Auditory Performance (CAP) scores gradually improved throughout the 3-year follow-up; however, variable outcomes existed between individuals. Specifically, the majority of recipients with a 1-year postoperative CAP score ≤ 1 remained steady or achieved awareness of environmental sounds, while recipients with early stage hearing benefit had markedly improved auditory performance and could possibly discriminate some speech without lipreading. Meanwhile, intraoperative electrically evoked compound action potential was not correlated with postoperative CAP score. The dynamic range between T and C levels remained unchanged. Our results further refine those of previous studies on the clinical feasibility of CI as the first treatment modality to elicit favorable auditory performance in children with CN aplasia. However, special attention should be paid to pediatric patients with an early postoperative CAP score ≤ 1 for identification of unsuccessful cochlear implants and switching to auditory brainstem implants.

Introduction

Cochlear nerve (CN) deficiency, refers to a small or absent CN, is clinically diagnosed using high-resolution imaging, and was first described by Casselman in 1997.¹ The CN is considered 'aplastic' if it cannot be identified on temporal bone imaging including oblique sagittal imaging and 'hypoplastic' if it appears smaller than the facial nerve within the internal auditory canal (IAC) on oblique sagittal imaging.² Previous studies have demonstrated that CN deficiency, one of the major inner ear anomalies, is seen in approximately 1–5.3% of children with bilateral sensorineural hearing loss (SNHL).^{3,4} CN deficiency, especially CN aplasia, has traditionally been considered a contraindication for cochlear implantation (CI), due to the challenging management of profound deafness, because outcomes of CI are largely associated with the CN status,^{5,6} even in severely malformed cochlea.⁷ In most patients, the presence of the CN and modiolus can be confirmed using magnetic resonance imaging (MRI).⁷ However, CN aplasia on MRI is not an absolute contraindication for CI.^{6,8} Thus, evidence on CN deficiency as a potential indication for CI has increased, and CN deficiency has been reported to be present in 2.5–11% of children undergoing CI.^{3,4}

Several studies evaluating CI outcomes in children with CN deficiency have suggested that CN integrity should be considered in the decision-making process of surgical management. Theoretically, the higher the spiral ganglion neuron population, the better the CI outcomes. This is in line with the results of previous studies that children with CN hypoplasia usually have similar or poorer performance than those with normal CN.^{9,10} Meanwhile, children with CN aplasia are less likely to benefit from CI than those with CN hypoplasia.^{6,10} However, variable CI outcomes exist in children with CN aplasia, resulting in a range of

auditory performance, from awareness of environmental sounds to conversation without lipreading,¹¹ implying that a subset of patients with CN aplasia can attain closed or open-set levels of speech perception following CI.⁶ Currently, evidence on CI outcomes in patients with apparent CN aplasia is limited, thus precluding timely and appropriate auditory rehabilitation (e.g., choice between CI and auditory brainstem implant [ABI]) in the context of the decision-making process of surgical management. Few studies have shown better hearing benefits following ABI in children with CN aplasia after unsuccessful bilateral CI procedures.⁶ In addition, Yousef et al. demonstrated better auditory perception and language development outcomes in the pediatric ABI group than in the CI group.² Considering the unpredictable outcomes of CI in patients with CN aplasia, it may be inappropriate to apply the same rehabilitation strategy to all patients, and CI should not be obligatorily pursued and maintained longitudinally.

Herein, we aimed to scrutinize functional outcomes in children with bilateral CN aplasia who underwent unilateral or bilateral CI, based on cross-sectional and longitudinal assessments. Based on this evidence, we sought to suggest a prognostic indicator that would be helpful in determining appropriate auditory rehabilitation strategies in children with bilateral CN aplasia. We believe that the results of this study further refine those of previous studies and suggest a potential guideline on how otologists should deal with CN aplasia in children in this era of customized auditory rehabilitation.

Results

Demographic and clinical characteristics

A total of 21 pediatric cochlear implantees (37 ears) with bilateral CN aplasia were included in the analysis. CN aplasia was verified using both computed tomography and MRI (Fig. 1). The demographic and clinical characteristics of the participants are presented in Table 1. Of these, 16 patients (76.2%) underwent simultaneous bilateral CI. The average age at the time of CI was 17.71 months (range: 10–37 months). Except for one patient who underwent surgery at 37 months of age, the majority of patients underwent surgery between 1 and 2 years of age (range, 10–28 months). Eight (38.1%) patients had inner ear anomalies other than CN aplasia, but not severely malformed cochleae, such as a common cavity (**Supplementary Table S1**). CI was performed via the round window approach in most patients, except for five patients who underwent CI via cochleostomy due to an invisible or inaccessible round window. Importantly, no major perioperative or postoperative complications were observed.

Table 1

Demographics and clinical characteristics of pediatric cochlear implantees with cochlear nerve aplasia.

Patients (N = 21, 37 ears)	
Age at CI (months)	
Mean (SD)	17.71 (6.99)
Range	10 – 37
Sex	
Male	10 (47.6%)
Female	11 (52.4%)
Laterality	
Unilateral, right	2 (9.5%)
Unilateral, left	3 (14.3%)
Bilateral, simultaneous	16 (76.2%)
Manufacturer	
Cochlear	15 (71.4%)
Medel	5 (23.8%)
Advanced bionics	1 (4.8%)
Approach	
Round window	16 (76.2%)
Cochleostomy	5 (23.8%)
Inner ear anomaly	
With anomaly*	8 (38.1%)
Without anomaly	13 (61.9%)
CI, cochlear implantation; SD, standard deviation	
*Note that various cochleovestibular anomalies combined with cochlear nerve aplasia are described in Supplementary Table S1.	

Natural course of auditory performance after surgery

The overall CAP score improved significantly and gradually from 0.29 ± 0.55 to 2.67 ± 1.73 throughout the 3-year follow-up period ($p < 0.001$, Wilcoxon signed rank test) (Fig. 2). Specifically, significant improvement in CAP scores between each timepoint, especially between preoperative and postoperative 1-year evaluation, was observed. However, none of the patients had a CAP score > 5 even after audiologic

rehabilitation for three years. Of note, the CAP score differed significantly between individuals, indicating the importance of detailed exploration of the natural course of auditory performance depending on early stage auditory development.

Prognostic value of CAP score at 1 year

Our cohort was subdivided into four groups based on the CAP score at the early postoperative stage (i.e., 1-year evaluation timepoint), and we evaluated the natural course of the auditory performance throughout the 3-year follow-up period (Fig. 3). Three patients had a CAP score of 0 at one year postoperatively. Among them, the CAP score of two patients slightly increased (up to 1), while the CAP score of the remaining patient remained steady (Fig. 3A). Seven patients exhibited a CAP score of 1 at 1-year postoperatively. Among them, the CAP score improved up to a value of 3 in only one patient, and remained steady or dropped to 0 in six patients (Fig. 3B). Patients with a CAP score > 1 at 1-year postoperatively tended to achieve better auditory performance over the 3-year follow-up period. Three of the five participants with a CAP score of 2 or 3 at 1-year postoperatively eventually achieved a CAP score of 4 (Fig. 3C). Of the 4 patients who scored 4 at 1-year post-CI, one scored 4 and two scored 5 at 3 years post-CI. However, in one patient (Pt 19), the CAP score dropped to 3 at post-CI 2 years and remained at 3 at the last follow-up. (Fig. 3D). Two patients with a CAP score of 5 at 1-year post-CI scored 4 or 5 at 3 years post-CI.

Stratified by CAP score ≤ 1 (N=10) versus CAP score > 1 (N=11) at 1-year postoperatively, no significant differences in other confounding factors, such as age at CI, sex, laterality, insertion approach, and preoperative CAP scores, were noted (Table 2). However, CAP scores were significantly different between the two groups at all time points from preoperative evaluations (0 vs. 0.55 ± 0.66 , $p=0.02$, Mann–Whitney U-test) to 3 years postoperatively (1 ± 0.8 vs. 4.2 ± 0.6 , $p<0.001$, Mann–Whitney U-test). Collectively, most patients with a CAP score ≤ 1 at 1-year postoperatively remained steady or exhibited extremely poor auditory performance throughout the follow-up period, whereas most patients with a CAP score > 1 at 1-year postoperatively had markedly improved auditory performance, with a CAP score of at least 3.

Table 2

Comparison of clinical profiles between patients with CAP score <1 versus patients with CAP score >1 at postoperative 1-year.

	CAP score <1 (n=10)	CAP score >1 (n=11)	p-value
Sex (M:F)	6:4	4:7	0.519
Age (Mean±SD, months)	17.4±5.2	18±8	0.94
Side (Unilateral: Bilateral)	3:7	2:9	0.903
Approach (RW: Cochleostomy)	9:1	7:4	0.366
Inner ear anomaly	4 (40%)	4 (36.4%)	1.00
CAP score at baseline	0	0.55±0.66	0.02
CAP score at 3 months	0.4±0.5	1±0.7	0.048
CAP score at 6 months	0.5±0.5	2.2±1.2	0.001
CAP score at 12 months	0.7±0.5	3.5±1.0	<0.001
CAP score at 24 months	0.8±0.9	4.1±0.7	<0.001
CAP score at 36 months	1±0.8	4.2±0.6	<0.001
Positive ECAP ratio (%)	37.3±39.6	57.4±29.4	0.25
CAP, Category of Auditory Performance; ECAP, electrically evoked compound action potential; M, male; F, female; SD, standard deviation; RW, round window; ECAP, electrically evoked compound action potential.			

Intraoperative ECAP

Of the 37 ears that underwent CI, intraoperative ECAP data were available for 34 ears. The positive ECAP ratio, referred to as the percentage of the number of electrodes exhibiting a positive response compared to the total number of electrodes, varied between ears, showing an average positive rate of $47.91 \pm 36.03\%$. No correlation was observed between the positive ECAP ratio and postoperative CAP scores at each time point (Fig. 4), although a weak tendency for greater auditory performance at 2 and 3 years postoperatively was observed in ears with a positive ECAP ratio (12 months, $R^2 = -0.01$, $p = 0.69$; 24 months, $R^2 = -0.14$, $p = 0.12$; 36 months, $R^2 = -0.14$, $p = 0.11$, respectively). These results imply that it would be difficult to predict the improvement of auditory performance postoperatively solely based on intraoperative electrophysiological testing using the positive ECAP ratio in children with CN aplasia.

Mapping

We evaluated the mapping data, including T and C levels, and dynamic range, when available. The average T and C levels and dynamic range did not significantly differ between the evaluation time points

(C level, $p=0.99$; T level, $p=0.82$; dynamic range, $p=0.97$, ANOVA and post-hoc analysis) (Fig. 5).

Discussion

We presented the longitudinal auditory performance of CI in children with bilateral CN aplasia. Our study has some merits for the following reasons. This study included the largest number of patients with bilateral CN aplasia to explore outcomes of CI based on cross-sectional and longitudinal audiological analyses. The overall CAP score showed significant and gradual improvement from 0.29 ± 0.55 to 2.67 ± 1.73 throughout the 3-year follow-up period, suggesting that CI may elicit favorable auditory performance even in children with CN aplasia. However, improvement in auditory performance showed variability between individuals, and the benefit appeared to be predominant in patients with a CAP score >1 at 1 year postoperatively. The results of this study may serve as a possible prognostic factor to aid in the decision-making process of surgical management of children with CN aplasia. Specifically, in pediatric cochlear implantees with a CAP score ≤ 1 at 1 year postoperatively, transiting auditory rehabilitation from CI to ABI may be considered for better auditory performance.

Since the first report proposing that CI could be applied to children with CN aplasia,¹² very few studies on CI outcomes in patients with CN aplasia have been reported. Wu et al.¹³ demonstrated significantly lower CAP scores in children with CN aplasia than in those with normal CNs matched for demographics. They reported that none of the seven patients with bilateral CN aplasia achieved favorable CI outcomes after 3 years of surgery, and their CAP scores ranged from 0 to 5, which is in line with our results. Furthermore, Birman et al. demonstrated that approximately 50% of children with CN aplasia achieved some verbal understanding, as evidenced by a CAP score of 5 to 7. Meanwhile, Yousef et al. reported a mean postoperative 2-year CAP score of 1.29 in seven cases with CN deficiency.² Of these five patients with CN aplasia scored 0, indicating no awareness of environmental sounds. The auditory performance of pediatric cochlear implantees with apparent CN aplasia presented in this study fell within the middle range based on reported studies in the literature. Although differences in methodologies, such as inclusion criteria and follow-up period, may lead to significant discrepancy, cross-sectional assessment and lack of evaluation time points would limit CI outcomes in patients with CN aplasia.²

There is insufficient evidence on the criteria for determining the treatment modalities (CI versus ABI) in children with CN aplasia. A recent study by Yousef et al.² compared and analyzed auditory performance after implantation in 14 patients with CN deficiency. Of these, seven patients underwent CI, and the other seven patients underwent ABI. Five patients in the CI group and all patients in the ABI group had bilateral CN aplasia. The mean CAP score at 2 years postoperatively was 1.29 in the CI group and 2.87 in the ABI group, demonstrating better outcomes in the ABI group. However, not all studies in the literature fully support this, probably due to small sample sizes for statistical significance, confounding factors, or heterogeneous assessment of auditory and speech performance in patients with CN aplasia. Specifically, a meta-analysis demonstrated that among pediatric patients with CN deficiency, 25% (27/108) attained open-set speech perception and 34% (37/108) attained close-set speech perception after CI,⁶ suggesting

that CI may serve as an initial treatment before ABI in children with CN deficiency. The rationale behind this could be the presence of residual CN fibers that were too hypoplastic to appear on MRI, even when CN aplasia is documented. For instance, a subset of children with CHARGE syndrome benefited from CI because the residual CN fibers exist, although they are very small and follow an alternative course. Additionally, children with apparent CN aplasia on MRI could benefit from electrical stimulation to develop auditory performance, which is likely due to connections or anastomoses between the CN and adjacent vestibular nerve based on anatomical studies.^{14,15} Corroborating this, our results also support that CI may be useful as an initial treatment modality before ABI in children with CN aplasia, as evidenced by the result that 57.1% (12/21) obtained a CAP score ≥ 3 at 3 years post-CI.

However, ABI could be an alternative treatment modality for CI in a subset of children with CN aplasia. Our data presented herein suggest that transiting auditory rehabilitation from CI to ABI may be considered for better auditory performance, especially in cases with limited benefit at the early postoperative stage (i.e., CAP score ≤ 1 at 1 year postoperatively). To the best of our knowledge, reproducible and reliable prognostic markers, including imaging and audiological data, that can predict CI outcomes in cases with CN aplasia are scarce. We, for the first time, suggest that changes in auditory performance at the early postoperative stage might serve as a possible prognostic marker to predict the trajectory of auditory performance postoperatively. Indeed, possible cofactors, such as demographic and surgical approaches, were well controlled between the groups according to the CAP score at the early postoperative stage. Supporting this, Vesseur et al.⁶ suggested that progress towards alternative treatment modalities such as ABI should be considered to obtain better outcomes when there is no response within several months following CI. Indeed, moderate hearing benefit after switching to ABI was observed in cases with unsuccessful CI outcomes. Furthermore, a meta-analysis of non-tumor pediatric ABI,¹⁶ predominantly with CN aplasia (103/162, 64.6%), reported that 47.9% of ABI recipients achieved CAP scores >4 at 5 years postoperatively.¹⁶ Interestingly, Aslan et al.¹⁷ showed that pediatric ABI recipients with late implantation (age at implantation ≥ 3 years) had poorer auditory performance than those with early implantation even after 5 years of ABI insertion. In other words, delayed transition from CI to ABI, up to 3 years after CI surgery, would be inappropriate, precluding sensitive time for auditory and language development. However, further studies are required to elucidate additional evidence on the optimal time point for transiting auditory rehabilitation.

In clinical practice, intraoperative ECAP is measured to confirm electrode placement, which is correlated with the SGN population. Typically, ECAP is useful for determining the initial programming level and estimation of audiologic outcomes,^{18,19} and significant correlations between speech perception after CI and ECAP parameters have been documented in the literature.²⁰⁻²² Similarly, some authors have suggested that the absence of ECAP is associated with poor audiologic outcomes in children with CN deficiency.^{21,23} However, poor responsiveness and the possibility of electrical artifacts between electrodes and CN fibers make it difficult to use ECAP in patients with CN aplasia.²⁴ Furthermore, previous studies have indicated that the electrically evoked auditory brainstem response elicited by CI was more sensitive than the ECAP. Yamazaki et al. showed that electrically evoked auditory brainstem response testing,

coupled with CN integrity on MRI, is clinically meaningful for predicting postoperative CI outcomes. In this study, we observed that the ECAP response rate was not significantly correlated with language development after CI in children with CN aplasia, albeit with a weak relationship. Perhaps, diverse electrodes and a small cohort may have hindered the drawing of firm conclusions regarding the relationship between intraoperative ECAP and postoperative CI outcomes.

This study had some limitations that should be addressed in future studies. In particular, the retrospective nature of this study may limit the generalizability of our results. Potential confounding factors that may affect language outcomes after CI, such as developmental delay and comorbidities such as medical syndromes,^{5,25} were not completely evaluated in our cohort, which might have biased the results of this study. Furthermore, the lack of a control group, comprising patients with CN aplasia without CI, may weaken our findings. Therefore, future case-control studies with a prospective study design, as well as matched cofactors, would have a stronger significance. Although we observed that the CAP score at 1-year postoperatively may serve as a prognostic value for longitudinal improvement of auditory performance in children with CN aplasia, further investigation is needed to support our results.

In conclusion, we elucidated the outcome of CI in the largest number of patients with bilateral CN aplasia in the literature, based on cross-sectional and longitudinal audiological analyses. Our results further refine those of previous studies on the clinical feasibility of CI as the first treatment modality to elicit favorable auditory performance in children with CN aplasia. However, this benefit may be predominant in a subset of pediatric CI recipients manifesting a CAP score >1 at the early postoperative stage. Thus, special attention should be paid to switching auditory rehabilitation from CI to ABI, especially in pediatric patients with unsuccessful cochlear implants at the early postoperative stage

Methods

Participants

We retrospectively reviewed the medical records of patients who underwent CI between July 2010 and June 2018 from the CI database of the Seoul National University Hospital. Among them, only individuals who met the following inclusion criteria were included: 1) bilateral CN aplasia diagnosed based on both IAC MRI (non-visible CN on oblique sagittal imaging) and temporal bone computed tomography (absence of bony cochlear narrow canal) (Fig. 1); 2) absence of auditory brainstem response with negative otoacoustic emissions in both ears; and 3) implantation by two experienced surgeons (J.H.L and S.H.O). Additionally, the exclusion criteria were as follows: 1) history of explantation or reimplantation; 2) severely malformed cochlea, including a common cavity, cochlear aplasia with dilated vestibule, and incomplete partition; 3) brain abnormalities observed during neuroradiological evaluation; and 4) syndromic deafness associated with neurodevelopmental delay, such as Charge syndrome and Noonan syndrome. Ultimately, 21 patients (37 ears) were included in this study. The Institutional Review Board of the Seoul National University Hospital approved this study, which was conducted in accordance with the

tenets of the Declaration of Helsinki (IRB No. 2105-073-1218). Written informed consent was obtained from the parents of the children and participants themselves.

Audiological evaluation

Auditory perception performance was assessed preoperatively and postoperatively according to eight categories using the Categories of Auditory Perception (CAP) scores, using a hierarchical scale from 0 to 7 for children's developing auditory abilities. CAP is a validated and widely used parameter of auditory receptive ability worldwide²⁶. auditory performance was assessed at up to five time points during the 3-year follow-up period. All patients enrolled in this study completed the evaluation of CAP scores at each time point during the 3-year follow-up period.

Electrically evoked compound action potential and Mapping

Electrically evoked compound action potentials (ECAPs) from the intra-cochlear electrode were recorded in the operating room immediately after surgery. The positive response of ECAP was assessed in every channel for all patients using automatic telemetry programs intraoperatively, including neural response telemetry for cochlear neural response imaging for advanced bionics, and auditory response telemetry for MED-EL. As outlined in the guidelines²⁷, test conditions for neural response telemetry were set at a 250 Hz stimulation rate and 35 sweeps. The maximum stimulus was set at a current level of 255 mA. As default settings for auditory response telemetry, the stimulation rate was 80 Hz, and the number of displayed responses was 5. The maximum charge was set to 35 charge units, and the charge increase rate was 8.0 qu/s. For neural response imaging, the maximum stimulus was 400 current units.

Mapping was performed at five time points during the 3-year follow-up period, coupled with speech evaluation testing. The average current unit threshold levels (T Level) and maximum comfortable loudness levels (C Level) were measured. The dynamic range was assessed as the calculated difference between the T and C levels. Mapping parameters, including sound coding, stimulation rate, pulse width, and input processing, were adjusted by an experienced audiologist.

Statistical analysis

All analyses were performed using the R software package, version 3.3.2 (R Foundation for Statistical Computing, Vienna, Austria). Data were visualized using the R software package and GraphPad Prism 7.00 (GraphPad Software, California, United States). Data are presented as mean \pm standard deviation (SD). Demographic and clinical variables were compared between groups using the Mann–Whitney U-test and Fisher's exact test, as appropriate. The Wilcoxon signed rank test (matched) was used for the comparison of overall CAP scores between evaluation time points. Furthermore, Spearman's correlation analysis was used to investigate the relationship between the ECAP response rate and postoperative CAP score. Statistical significance was set at $P < 0.05$.

Declarations

DATA AVAILABILITY

The data that support the findings of this study are available from the corresponding author upon reasonable request. Some data may not be made available because of privacy or ethical restrictions.

Author Contributions

The final manuscript has been seen and approved by all the authors, and they have given necessary attention to the manuscript to ensure the integrity of the work. G.C, Y.S.K, S.L and J.H.L designed and wrote the paper; G.C and Y.S.K collected and analyzed data including statistical analysis and visualization; M.S, M.K.P, S.O provided critical revision.

These data have not been previously published and are not submitted elsewhere for publication.

Competing Interests

The author(s) declare no competing interests.

Financial Disclosures

This research was supported by Basic Science Research Program through the National Research Foundation of Korea (NRF) funded by the Ministry of Education, Science and Technology (No. 2021R1F1A105982811).

References

1. Casselman, J. W. *et al.* Aplasia and hypoplasia of the vestibulocochlear nerve: diagnosis with MR imaging., **202**, 773–781 <https://doi.org/doi:10.1148/radiology.202.3.9051033> (1997).
2. Yousef, M. *et al.* Cochlear implantation versus auditory brainstem implantation in children with auditory nerve deficiencies. *European Archives of Oto-Rhino-Laryngology*, 1–6(2021)
3. Adunka, O. F. *et al.* Internal auditory canal morphology in children with cochlear nerve deficiency. *Otol Neurotol*, **27**, 793–801 <https://doi.org/doi:10.1097/01.mao.0000227895.34915.94> (2006).
4. Nakano, A., Arimoto, Y. & Matsunaga, T. Cochlear nerve deficiency and associated clinical features in patients with bilateral and unilateral hearing loss. *Otol Neurotol*, **34**, 554–558 <https://doi.org/doi:10.1097/MAO.0b013e3182804b31> (2013).
5. Birman, C. S., Powell, H. R., Gibson, W. P. & Elliott, E. J. Cochlear implant outcomes in cochlea nerve aplasia and hypoplasia. *Otology & Neurotology*, **37**, 438–445 (2016).
6. Vesseur, A. *et al.* Hearing restoration in cochlear nerve deficiency: the choice between cochlear implant or auditory brainstem implant, a meta-analysis. *Otology & Neurotology*, **39**, 428–437 (2018).
7. Lee, S. Y. & Choi, B. Y. Potential Implications of Slim Modiolar Electrodes for Severely Malformed Cochleae: A Comparison With the Straight Array With Circumferential Electrodes. *Clinical and*

- experimental otorhinolaryngology*, **14**, 287 (2021).
8. Brotto, D. *et al.* A META-ANALYSIS". *Otology & Neurotology*, **40**, 543–544 (2019).
 9. Arumugam, S. V. *et al.* A Study of Outcome of Pediatric Cochlear Implantation in Patients with Cochleovestibular Nerve Deficiency. *J Int Adv Otol*, **16**, 147–152 <https://doi.org/doi:10.5152/iao.2020.8466> (2020).
 10. Yousef, M. *et al.* Audiologic Outcome of Cochlear Implantation in Children With Cochlear Nerve Deficiency. *Otol Neurotol*, **42**, 38–46 <https://doi.org/doi:10.1097/MAO.0000000000002849> (2021).
 11. Han, J. J. *et al.* A predictive model for cochlear implant outcome in children with cochlear nerve deficiency. *Scientific reports*, **9**, 1–10 (2019).
 12. Vlastarakos, P. V. *et al.* Cochlear implantation update: contemporary preoperative imaging and future prospects - the dual modality approach as a standard of care. *Expert Rev Med Devices*, **7**, 555–567 <https://doi.org/doi:10.1586/erd.10.28> (2010).
 13. Wu, C. M. *et al.* Impact of cochlear nerve deficiency determined using 3-dimensional magnetic resonance imaging on hearing outcome in children with cochlear implants. *Otol Neurotol*, **36**, 14–21 <https://doi.org/doi:10.1097/MAO.0000000000000568> (2015).
 14. Özdoğmuş, Ğ. *et al.* Connections between the facial, vestibular and cochlear nerve bundles within the internal auditory canal. *Journal of anatomy*, **205**, 65–75 (2004).
 15. Tian, G., Xu, D., Huang, D., Liao, H. & Huang, M. -x. The topographical relationships and anastomosis of the nerves in the human internal auditory canal. *Surgical and Radiologic Anatomy*, **30**, 243–247 (2008).
 16. Noij, K. S. *et al.* Systematic Review of Nontumor Pediatric Auditory Brainstem Implant Outcomes. *Otolaryngol Head Neck Surg*, **153**, 739–750 <https://doi.org/doi:10.1177/0194599815596929> (2015).
 17. Aslan, F. *et al.* Effects of Age at Auditory Brainstem Implantation: Impact on Auditory Perception, Language Development, Speech Intelligibility. *Otol Neurotol*, **41**, 11–20 <https://doi.org/doi:10.1097/MAO.0000000000002455> (2020).
 18. Jeon, E. K. *et al.* Comparison of electrically evoked compound action potential thresholds and loudness estimates for the stimuli used to program the Advanced Bionics cochlear implant. *J Am Acad Audiol*, **21**, 16–27 <https://doi.org/doi:10.3766/jaaa.21.1.3> (2010).
 19. Holstad, B. A. *et al.* Relation of electrically evoked compound action potential thresholds to behavioral T- and C-levels in children with cochlear implants. *Ear Hear*, **30**, 115–127 <https://doi.org/doi:10.1097/AUD.0b013e3181906c0f> (2009).
 20. van Eijl, R. H., Buitenhuis, P. J., Stegeman, I., Klis, S. F. & Grolman, W. Systematic review of compound action potentials as predictors for cochlear implant performance. *Laryngoscope*, **127**, 476–487 <https://doi.org/doi:10.1002/lary.26154> (2017).
 21. Buchman, C. A. *et al.* Cochlear implantation in children with labyrinthine anomalies and cochlear nerve deficiency: implications for auditory brainstem implantation. *Laryngoscope*, **121**, 1979–1988 <https://doi.org/doi:10.1002/lary.22032> (2011).

22. Jeong, S. W. & Kim, L. S. Auditory neuropathy spectrum disorder: predictive value of radiologic studies and electrophysiologic tests on cochlear implant outcomes and its radiologic classification. *Acta Otolaryngol*, **133**, 714–721 <https://doi.org/doi:10.3109/00016489.2013.776176> (2013).
23. Teagle, H. F. *et al.* Cochlear implantation in children with auditory neuropathy spectrum disorder. *Ear Hear*, **31**, 325–335 <https://doi.org/doi:10.1097/AUD.0b013e3181ce693b> (2010).
24. He, S. *et al.* Recommendations for Measuring the Electrically Evoked Compound Action Potential in Children With Cochlear Nerve Deficiency. *Ear Hear*, **41**, 465–475 <https://doi.org/doi:10.1097/AUD.0000000000000782> (2020).
25. Peng, K. A., Kuan, E. C., Hagan, S., Wilkinson, E. P. & Miller, M. E. Cochlear nerve aplasia and hypoplasia: predictors of cochlear implant success. *Otolaryngology–Head and Neck Surgery*, **157**, 392–400 (2017).
26. Archbold, S., Lutman, M. & Marshall, D. Categories of auditory performance. *The Annals of otology, rhinology & laryngology. Supplement*, **166**, 312–314 (1995).
27. Lee, S. Y. *et al.* Modiolar proximity of slim modiolar electrodes and cochlear duct length: correlation for potential basis of customized cochlear implantation with perimodiolar electrodes. *Ear and Hearing*(2020)

Figures

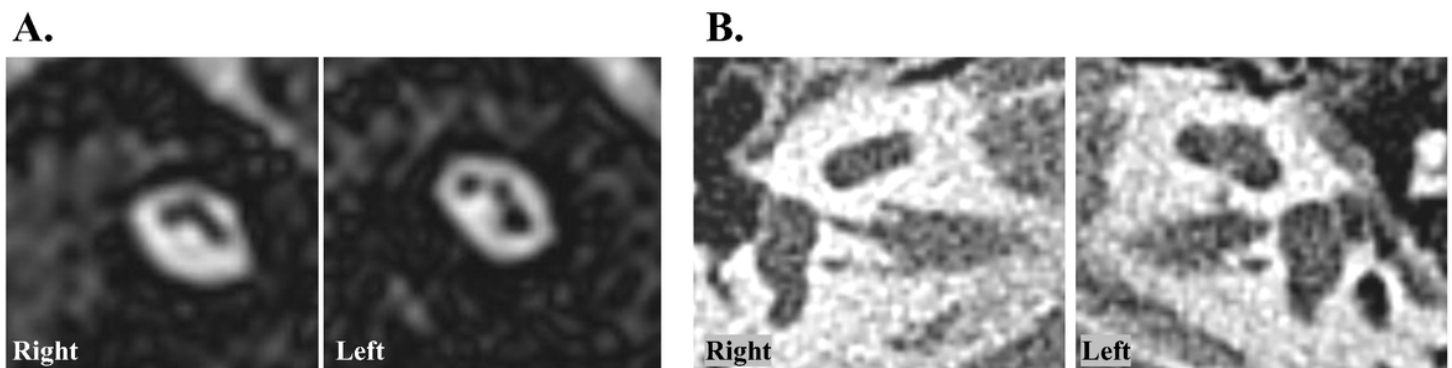


Figure 1

Representative imaging of cochlear nerve aplasia. (A) non-visible cochlear nerve on oblique sagittal view of internal auditory canal magnetic resonance imaging. (B) absence of bony cochlear narrow canal on temporal bone computed tomography.

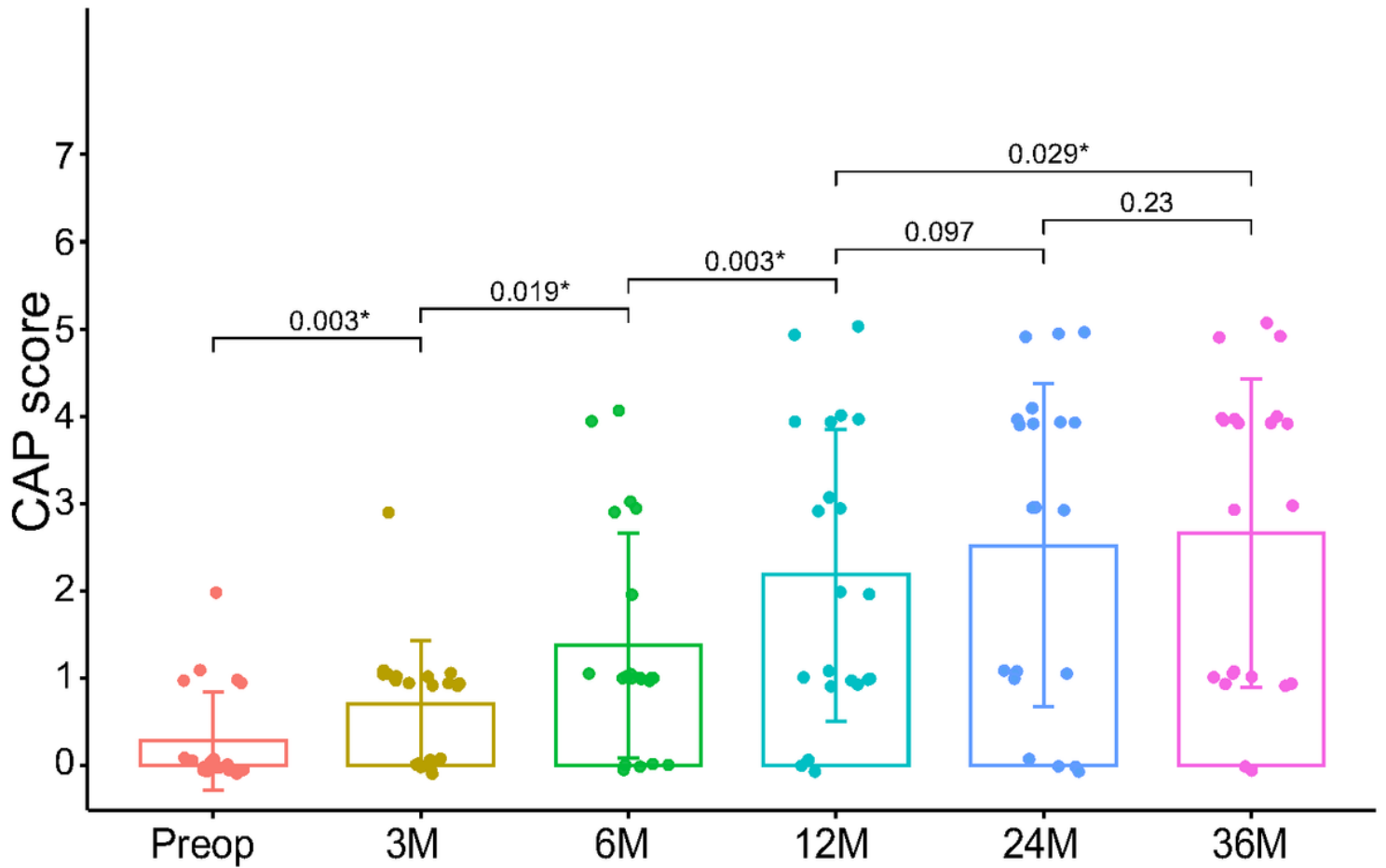


Figure 2

Preoperative and postoperative CAP scores in pediatric cochlear implantees with bilateral cochlear nerve deficiency. P-values are presented on the comparing lines. *, statistical significance (by Wilcoxon signed rank test). CAP, Category of Auditory Performance; Preop, preoperative; M, postoperative months.

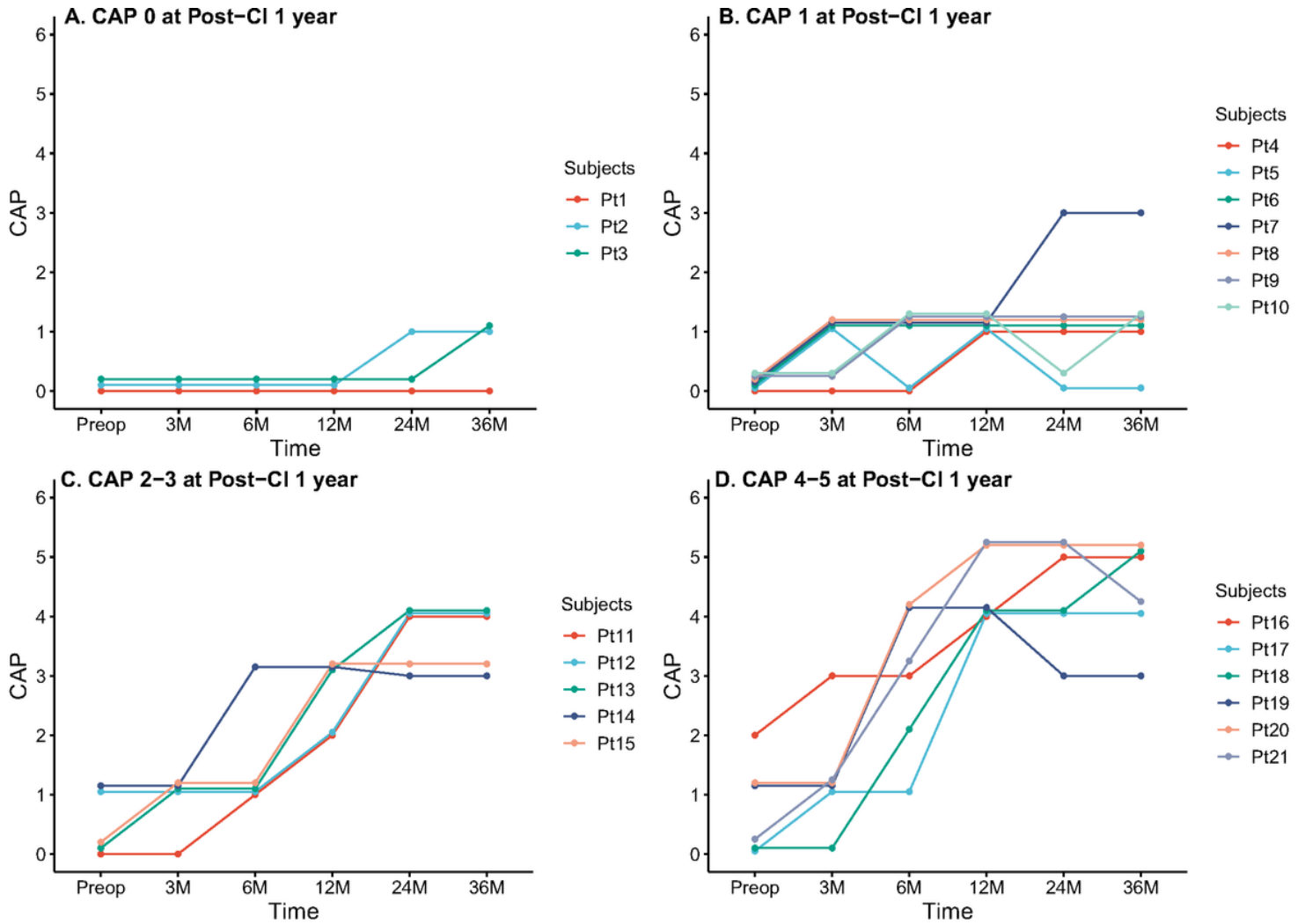


Figure 3

Longitudinal changes in CAP scores according to CAP score at 1-year postoperatively. Patients were subclassified into four groups based on CAP scores at postoperative 1 year and depicted individual auditory performance postoperatively. CAP, Category of Auditory Performance; CI, cochlear implant; Preop, preoperative; M, postoperative months.

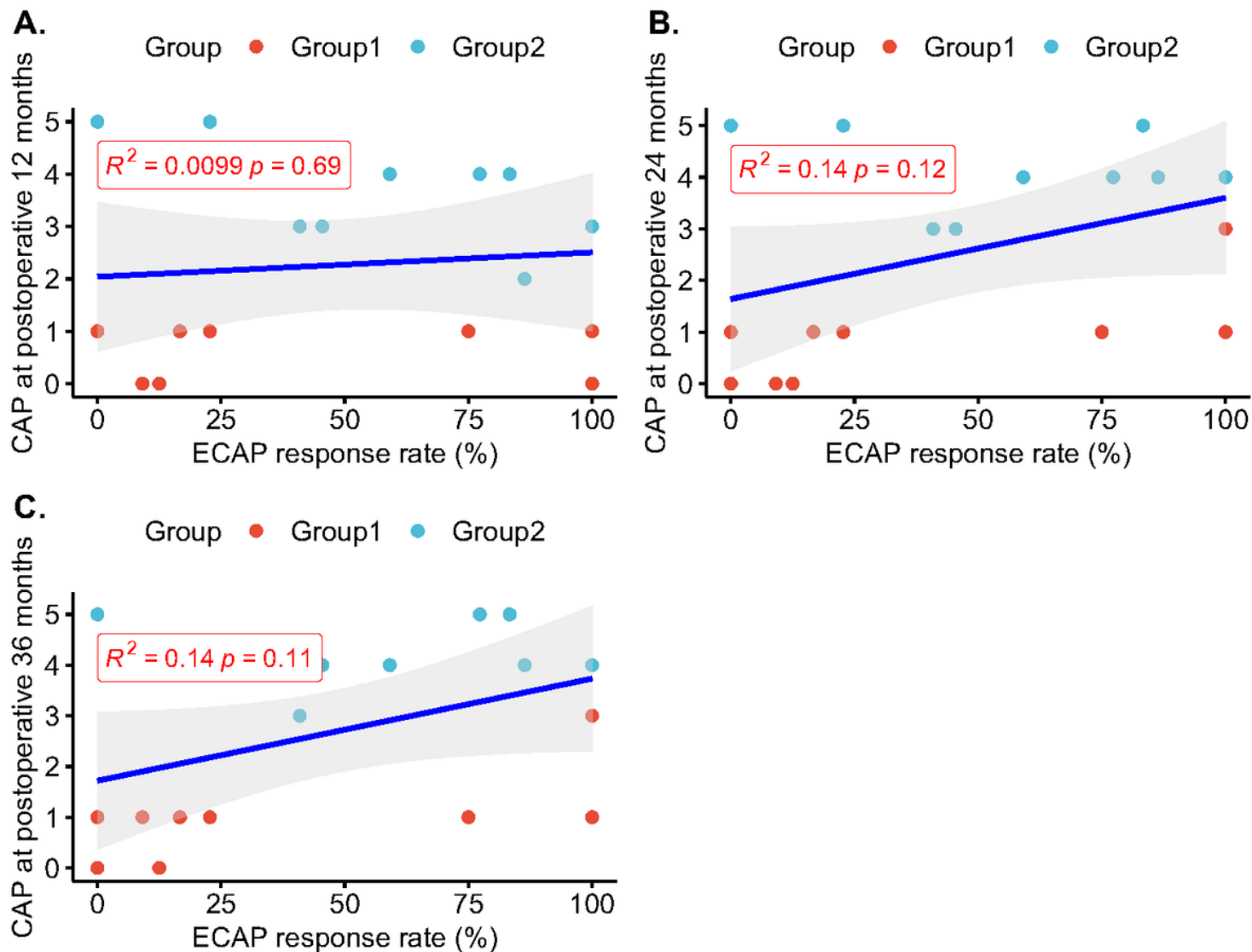


Figure 4

Correlation analyses between the intraoperative positive ECAP ratio and CAP scores at postoperative stages. No statistically significant correlations between intraoperative ECAP response rate and CAP scores at 1, 2, and 3 years after surgery were illustrated (using Spearman's correlation analysis). Group 1 consisted of participants with CAP score 0-1 at postoperative 1 year, and Group 2 consisted of participants with CAP score ≥ 3 at postoperative 1 year. CAP, Category of Auditory Performance; ECAP, electrically evoked compound action potential.

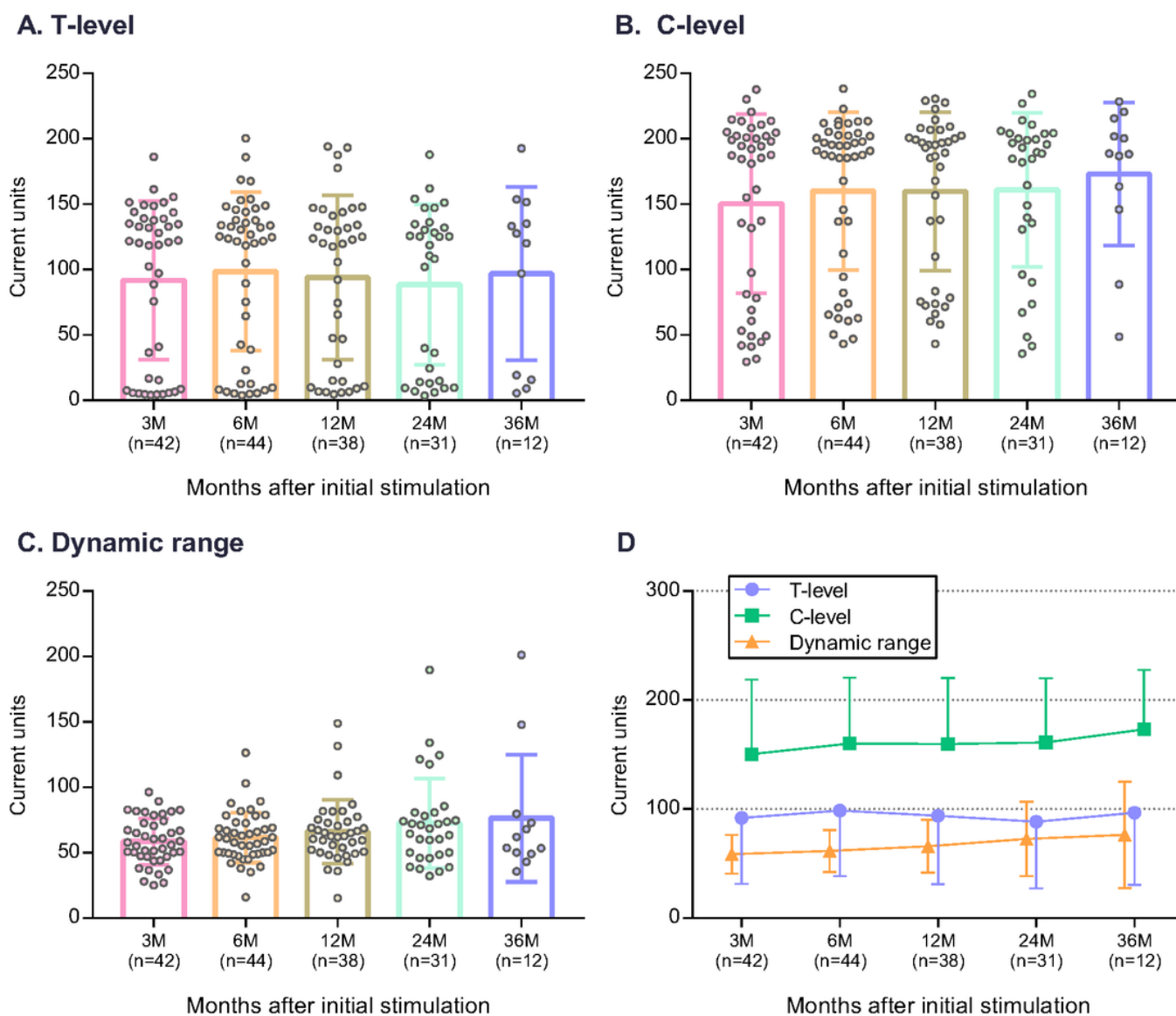


Figure 5

Longitudinal mapping results in pediatric cochlear implantees with cochlear nerve aplasia. A. T-level, B. C-level, C. Dynamic range, D. Average T- and C-levels and dynamic range. Dynamic range refers to the difference between T- and C-levels (current units). T-level, threshold level; C-level, comfortable level; M, months

Supplementary Files

This is a list of supplementary files associated with this preprint. Click to download.

- [SupplementaryTableS1.docx](#)