

Construction of homologous cancer cell membrane camouflage in a nano-drug delivery system for the treatment of lymphoma

Qiangqiang Zhao

Central South University Xiangya School of Medicine

Xiaoying Sun

Soochow University Medical College

Bin Wu

Central South University Third Xiangya Hospital

Yinghui Shang

Central South University Third Xiangya Hospital

Xueyuan Huang

Central South University Third Xiangya Hospital

Hang Dong

Central South University Third Xiangya Hospital

Haiting Liu

Central South University Third Xiangya Hospital

Wansong Chen

Central South University College of Chemistry and Chemical Engineering

RONG GUI (✉ zndxgr@163.com)

Central South University Third Xiangya Hospital <https://orcid.org/0000-0001-7790-0291>

Jian Li (✉ lj168301018@csu.edu.cn)

Central South University Third Xiangya Hospital

Research

Keywords: Cancer cell membrane, Mesoporous silica nanoparticles, Isoimperatorin, apoptosis, lymphoma

Posted Date: December 3rd, 2020

DOI: <https://doi.org/10.21203/rs.3.rs-27171/v3>

License:   This work is licensed under a Creative Commons Attribution 4.0 International License.

[Read Full License](#)

Version of Record: A version of this preprint was published on January 6th, 2021. See the published version at <https://doi.org/10.1186/s12951-020-00738-8>.

Abstract

Background

Non-Hodgkin's lymphoma (NHL) possesses great heterogeneity in cytogenetics, immunophenotype and clinical features, and chemotherapy currently serves as the main treatment modality. Although employing monoclonal antibody targeted drugs has significantly improved its overall efficacy, various patients continue to suffer from drug resistance or recurrence. Chinese medicine has long been used in the treatment of malignant tumors. Therefore, we constructed a low pH value sensitivity drug delivery system based on the cancer cell membrane modified mesoporous silica nanoparticles loaded with traditional Chinese medicine, which can reduce systemic toxicity and improve the therapeutic effect for the targeted drug delivery of tumor cells.

Results

Accordingly, this study put forward the construction of a nano-platform based on mesoporous silica nanoparticles (MSNs) loaded with the traditional Chinese medicine isoimperatorin (ISOIM), which was camouflaged by the cancer cell membrane (CCM) called CCM@MSNs-ISOIM. The proposed nano-platform has characteristics of immune escape, anti-phagocytosis, high drug loading rate, low pH value sensitivity, good biocompatibility and active targeting of the tumor site, blocking the lymphoma cell cycle and promoting mitochondrial-mediated apoptosis.

Conclusions

Furthermore, this study provides a theoretical basis in finding novel clinical treatments for lymphoma.

Background

Non-Hodgkin's lymphoma (NHL) is a malignant disease of the hematological system, which is commonly encountered globally. At present, the incidence of NHL demonstrates a significant upward trend in different stages of age[1]. Certain patients with NHL can achieve complete remission after a short duration of chemotherapy under the R-CHOP regimen[2]. Unfortunately, about 50% of such patients will relapse, and the 3-year overall survival rate after recurrence is about 30%[3]. Patients with recurrent cancer/NHL have serious side effects due to the use of high-dose chemotherapy drugs, and recurrent lymphoma is insensitive to follow-up treatment using the initial chemotherapy regimen and displays cross-resistance for a variety of anticancer drugs[4]. Therefore, identifying novel anticancer drugs with high efficiency and low toxicity in the treatment of NHL is a vital topic in research.

Recently, natural Chinese herbal medicine has shown to be a valuable source for the screening of anticancer drugs[5]. Isoimperatorin (ISOIM) belongs to furan coumarins, which mainly distributes in Umbelliferae and Rutaceae including *Angelica dahurica*, *Radix Notopterygii*, *Fructus Cnidii* and *Radix Glehniae*[6]. Studies have illustrated that ISOIM possesses anti-tumor properties. In this regard, Kim YK et

al found that ISOIM has different inhibitory effects on human lung cancer cell line A549 as well as human ovarian cancer cell line SK-OV-3 in a dose-dependent manner[7]. In addition, studies have shown that ISOIM can inhibit the proliferation and promote apoptosis of human gastric cancer cells[8, 9]. However, most anticancer drugs are low molecular weight compounds that are easily excreted via glomerular filtration or liver metabolism[10].

Numerous investigations have shown that nano-carriers loaded with active components of traditional Chinese medicine (TCM) prevent damage caused by light, pH and enzymes, thus maintaining its stability and improving its solubility and bioavailability of drugs[11-13]. Albena Ivanisevic et al has proved that mesoporous silica nanoparticles (MSNs) has garnered increasing attention due to its good biocompatibility, large specific surface area, and adjustable pore size[14]. Juèrè et al[15] encapsulated resveratrol in MSNs and found that encapsulated resveratrol greatly improved its physical and chemical properties as well as its biological activity. MSNs may be delivered to tumor cells in triple negative breast cancer by loading chemotherapeutic drugs and siRNA to kill the cancerous cells. Although employing unmodified MSNs as a carrier for drug delivery may improve the biological stability of antineoplastic drugs as well as the permeability of malignant tumor cells, tumor targeting remains insufficient, limiting the application of MSNs in tumors[16].

Inspired by the near-perfect structure and function of biology in nature, bionic technology has been widely researched[17, 18]. Erythrocyte membranes[19], leukocyte membranes[20] and platelet membranes[21] are all used to construct nano-drug delivery systems. At the same time, Ca^{2+} -dependent proteins are often highly expressed on cancer cell membranes (CCM), which mediate the adhesion and targeting of tumor cells[22-24]. Specifically, such properties stimulate tumor cells to recognize and adhere to each other and resist apnea and apoptosis *in vivo*[25]·[26]. Therefore, CCM as a biomimetic nano-system shows strong tumor targeting potential.

In this study, MSNs-loaded ISOIM was designed and constructed as the nanoparticles' core (MSNs-ISOIM), which was encapsulated within the membrane of lymphoma cells, in order to construct a novel nano-targeted drug delivery system (CCM@MSNs-ISOIM) and analyze its anti-tumor outcomes (**Figure 1**). We believe that CCM@MSNs-ISOIM has introduced a new direction for the functionalization of inorganic nanomaterials and will accelerate the clinical transformation of nano-drugs.

Materials And Methods

Materials

Mesoporous silica dispersion was purchased from nanoComposix Company (USA), and Isoimperatorin from DESITE (China). Fetal bovine serum and RPMI1640 cell culture medium were extracted by Gibco (USA). Cell counting kit-8 (CCK-8) was purchased from Dojindo laboratories (Japan), and the Annexin V-FITC/PI apoptosis detection reagent was produced by BD (USA). Cell cycle detection kit, reactive oxygen species (ROS) detection kit, and DAPI were acquired from Beyotime Biotechnology (China). Rhodamine

123 (Rh123) was provided by Yeasen Biotechnology (China). Cy5 and membrane (2 kD) were purchased from Solarbio (China). Cell lysate, Protease inhibitor and TUNEL reaction solution were obtained from Boster (China). Anti-Ki-67, anti-P53, anti-Caspase-9 and anti-Caspase-3 antibodies were all purchased from Servicebio (China), while anti-Pan-Cadherin and anti-E-Cadherin antibodies were acquired from CST (USA). H&E staining kit was purchased from keygen BioTECH (China), and human lymphoma cell line OCI-LY10 was acquired from the Shanghai Institute of Cell Research, Chinese Academy of Sciences.

Cell culture

OCI-LY10 cells were inoculated in RPMI160 medium containing 10% fetal bovine serum and placed in an incubator at 37 °C and 5% CO₂, which was passed on every 2-3 days. The logarithmic growth phase cells were selected for the experiment.

Synthesis of MSNs@ISOIM

MSNs (10 mg) and ISOIM (8.9 mg) were added to 5ml anhydrous alcohol and stirred for 6 h at room temperature, after which free ISOIM was removed via 2 kD dialysis membrane. The samples after dialysis were used to detect the concentration of ISOIM. [27] Entrapment efficiency (EE%) = (Total ISOIM - Total ISOIM in the supernatant) / Total ISOIM × 100%. Loading efficiency (LE%) = (Total ISOIM - Total ISOIM in supernatant) / [(Total ISOIM - Total ISOIM in supernatant) + Total MSNs] × 100%.

Cancer cell membrane (CCM) extraction

OCI-LY10 tumor cells were dispersed in 5 mL 10% sucrose hypotonic solution containing protease inhibitors and placed on ice for 1 h. The cells were then stirred and homogenized with a high-speed disperser (12000 rpm × 5 min). After the homogenate was centrifuged at 3000 rpm × 5 min, the supernatant was discarded, and the procedure was repeated 5 times for the remaining precipitation. All cell lysates were collected and centrifuged using a sucrose solution (50% wt, 40% wt and 30% wt) for ultracentrifugation (12000 rpm × 5 min). The interface components of 30% to 40% were collected, and the precipitates were collected after 12000 rpm centrifugation for 10 min. Afterward, the precipitates were washed with ddH₂O 3 times to obtain the extracted cancer cell membrane (CCM)[28].

Construction of CCM@MSNs-ISOIM

CCM was mixed with the same volume of MSNs@ISOIM and fused using ultrasound (3min 42 kHz, 100W), which was filtered 30 times using a filter with a pore diameter of 200 nm. After collecting the mixture and centrifuging at (2000 rpm × 5 min), the excess CCM was removed, and the final CCM@MSNs-ISOIM was obtained.

Characterization of CCM@MSNs-ISOIM

The liquid transfer gun dripped 10 μl CCM@MSNs-ISOIM onto the copper mesh covered with a supporting film, and the absorbent paper absorbed the excess water. After drying naturally, the morphology of the

nanoparticles was observed under a transmission electron microscope (Tecnai G2 Spirit TEM, FEI, USA). The particle size and surface charge of the nanoparticles were determined by Zetasizer Nano ZS (Malvern Nano series, Malvern, UK). The test was carried out at room temperature with 1 mg/mL sample of 1.5 mL. The CCM protein and CCM@MSNs protein were detected by sodium dodecyl sulfate-polyacrylamide gel electrophoresis (SDS-PAGE) to identify whether the MSNs were successfully encapsulated in CCM. UV/Vis spectroscopy (ScanDrop, Analytik Jena, Germany) was used to detect the absorbance of CCM, MSNs, ISOIM and CCM@MSNs-ISOIM, respectively.

CCM@MSNs-ISOIM release properties for ISOIM

The drug release test of CCM@MSNs-ISOIM was carried out at pH 7.4 and pH 5.0 to determine whether ISOIM could be released according to low pH value sensitivity. Dialysis was applied to analyze the release of ISOIM from MSNs@ISOIM and CCM@MSNs-ISOIM. Dialysis bags (molecular weight cut-off, MWCO 8000–14000 Da) were filled with 2 mL of MSNs@ISOIM and CCM@MSNs-ISOIM, respectively, while the bags were immersed in 20 mL of PBS containing 0.2% (w/v) Tween 80 with stirring at 100 rpm at 37°C [29, 30]. At fixed times, a sample of release medium (100 µL) was extracted and the same volume of fresh medium was added back to keep the final volume constant. The dialysate was collected and the absorbance of ISOIM was determined at the wavelength of 230.5 nm. A standard curve was established to calculate the cumulative release of ISOIM.

Biocompatibility of CCM@MSNs-ISOIM

Five different concentrations of MSNs were added to the suspended red blood cells along with five different concentrations of CCM@MSNs-ISOIM, all of which served as the experimental group. Ultrapure water was used as the positive control with PBS as the negative control. The experimental, positive control and negative control groups were incubated at 37 °C for 2 h at 1000 rpm centrifugation for 5 min to collect the supernatant. The supernatant was then added to a 96-well plate. The absorbance (OD) of the supernatant at 540 nm was measured using a multi-function enzyme labeling instrument (PerkinElmer EnSpire, USA). OCI-LY10 cells were inoculated in a 24 well plate (1×10^5 cells/well) and incubated at different concentrations of MSNs and CCM@MSNs (10, 20, 40, 80 and 100 µg/mL, the concentration of MSNs in the above-mentioned two groups was identical). After 24 h of incubation, 10 µL Cell Counting Kit-8 (CCK-8) solution was added to each hole and incubated for 4 h. The absorbance of the solution was determined to be 450 nm. The hemolysis rate (%) = $(OD_s - OD_n) / (OD_p - OD_n) \times 100\%$, (OD_s , OD_n and OD_p were the absorbance values of the supernatant of the experimental group, negative control and positive control, respectively). The experiment was repeated 3 times. In order to detect the immune escape ability of CCM@MSNs, RAW264.7 cells were inoculated in a 6-well plate (2×10^5 cells/well) and incubated with CCM@MSNs for 6 h. The nuclei of the RAW264.7 macrophages were stained with Hoechst 33342. The phagocytosis and fluorescence signals of CCM@MSNs in macrophages were observed under a laser confocal fluorescence microscope (LCFM, TCS SP8 CARS, Leica Germany).

Evaluation of CCM@MSNs targeting *in vitro*

OCI-LY10 cells (1×10^5 cells/well) were inoculated in culture dishes, and CCM vesicles labeled with DSPE-FITC were co-cultured with OCI-LY10 cells for 6 h, while OCI-LY10 nuclei were stained with OCI-LY10 Hoechst 33342. After washing with PBS 3 times, the image was observed under a LCFM.

Cytotoxic effect of CCM@MSNs-ISOIM on OCI-LY10 *in vitro*

Cell viability was measured according to the instructions provided by CCK-8. A colony formation test was used to determine the inhibition rate of OCI-LY10 by CCM@MSNs-ISOIM. OCI-LY10 cells in logarithmic phase were collected and inoculated in 6-well plates, and the cell density was adjusted to 1×10^3 cells/well. The cells were incubated in a cell incubator for 24 h. Following incubation, the cells were treated with various treatments and continued to be cultured for 12 days, changing the liquid every 3 days. After the formation of monoclonal colonies, the cells were fixed with methanol, stained with 0.2% crystal violet for 30 min, then rinsed with PBS 5 times and photographed. Single clones of more than 50 cells were counted.

Cell Cycle, ROS, MMP and Apoptosis assay by flow cytometry *in vitro*

OCI-LY10 cells (5×10^5 cells/well) were inoculated into 6-well plates and treated using different treatments for 48 h. After 48 h, the cells were collected and suspended in PBS after washing. Following PI staining, DNA content was measured via flow cytometry (FACS Canto™ II, BD, USA), and the cell cycle was analyzed. Fluorescent probe Rh123 was performed to detect the changes in level of mitochondrial membrane potential (MMP) by flow cytometry. The level of reactive oxygen species (ROS) in cells was detected by the ROS detection kit. In order to further determine the anti-tumor properties of CCM@MSNs-ISOIM *in vitro*, apoptosis was observed via Annexin V-FITC/PI apoptosis detection kit.

Establishment of subcutaneous OCI-LY10 cell lymphoma model in nude mice

OCI-LY10 cells in a logarithmic growth phase were collected and resuscitated with PBS solution. The cells were resuscitated to 1×10^8 /ml, loaded into an EP tube and placed on crushed ice. About 0.2 mL cell suspension was absorbed with a 1ml syringe, which was then inoculated subcutaneously after iodophor disinfection. After vaccination, the spirit, diet and defecation habits of nude mice were regularly observed.

Evaluation of CCM@MSNs-ISOIM targeting *in vivo*

In order to evaluate CCM@MSNs-ISOIM targeting among tumor-bearing mice, Cy5-labeled CCM@MSNs and Cy5-labeled MSNs were compared and injected into tumor-bearing mice via tail vein. Using the Xenogen IVIS Lumina XR imaging system (Caliper Life Sciences, USA), the fluorescence signals at 6, 24 and 48 h after administration were detected.

Evaluation of antitumor efficacy and toxicity of CCM@MSNs-ISOIM

When the tumor volume reached approximately 100 mm^3 , the experiment was divided into 4 groups (PBS, ISOIM, MSNs@ISOIM and CCM@MSNs-ISOIM), with 3 nude mice in each group. The dose of ISOIM has

been factored into OCI-LY10 tumor-bearing mouse model, e.g. 10 mg of ISOIM/kg was used to treat the animal model of tumor-bearing mice[8]. Likewise, to draw comparison in the anti-tumor effects produced by MSNs@ISOIM, CCM@MSNs-ISOIM and free ISOIM, the concentration of ISOIM in MSNs@ISOIM and CCM@MSNs-ISOIM nanocomposites has been made identical to that of free ISOIM for the aforementioned research. The drugs were given by tail vein injection, once every 2 days, for a total of 4 times. The tumor length (L, mm), width (W, mm) and volume (V, mm³) were measured with an electronic Vernier caliper. The tumor volume was calculated by $V=(LW^2)/2$. The tumor volume was measured through monitoring every 3 days, and the time curve of tumor volume was drawn. As the change in body weight is a sensitive index for drug toxicity and side effects, an electronic scale was also used to monitor the change in the body weight of the nude mice. The nude mice were weighed every 3 days, and the time curve depicting the weight changes of the nude mice was drawn. After the end of the aforementioned treatment, the nude mice were euthanized with anesthesia, and the tumor, heart, liver, spleen, lungs and kidneys were peeled off and fixed using a tissue fixation solution containing 4% polyformaldehyde for 24 h. The tumor and organ tissues of the nude mice were collected and were Hematoxylin and Eosin (H&E) stained to observe any histopathological changes. The blood of the nude mice was collected for hematological and biochemical analysis. Serum liver function was assessed using alanine aminotransferase (ALT) and aspartate aminotransferase (AST), while renal function was measured by creatinine (CRE) and blood urea nitrogen (BUN) and cardiac function was measured by creatine kinase (CK) and myoglobin (Myo). The levels of white blood cell (WBC), hemoglobin (HGB) and platelet (PLT) were also analyzed to observe hematological toxicity *in vivo*.

TUNEL, Ki-67, MMP and ROS assays

Paraffin-embedded tissue samples were dewaxed, and the antigens were recovered. Apoptotic nuclei were detected using the TDT in situ apoptosis kit. The Ki-67 test kit was operated according to the manufacturer's instructions. The morphology of the cells was observed under a light microscope, and its images were collected. MMP and ROS were detected via immunofluorescence staining of JC-1 and DCFH-DA, respectively. The nucleus was re-stained with DAPI, and LCFM was used to take the corresponding images.

Western Blot analysis and immunofluorescence staining

After OCILY10 cells were treated with PBS, ISOIM, MSNs@ISOIM and CCM@MSNs-ISOIM, respectively, for 48 h, the above cells were collected and homogenized, after which the lysate was added at 4 °C for 30 min. The supernatant was extracted via centrifugation, and the protein concentration was determined by BCA. The protein contents of Pan-Cadherin, E-Cadherin, p53, caspase-3, caspase-9 and β -actin in the cells were observed through Western Blot analysis. OCI-LY10 tumor-bearing mice were treated with PBS, ISOIM, MSNs@ISOIM and CCM@MSNs-ISOIM, respectively, through tail vein once every 2 days for 4 times. After 21 days, the tumor tissues were collected. Paraffin embedded tumor tissue was deparaffinized for antigen repair, and immunofluorescence staining was carried out using anti-p53, Caspase-3 and caspase-9,

according to the standard protocol. The tumor cells were observed and imaged under a fluorescence microscope.

Statistical analysis

SPSS 16.0 software was used to conduct the statistical analysis, where data were expressed as mean \pm SD. Differences between groups were assessed using one-way ANOVA, followed by Tukey's post hoc test (* $p < 0.05$, ** $p < 0.01$, and *** $p < 0.001$).

Results

Preparation and characterization of CCM@MSNs-ISOIM

First, ISOIM was loaded into MSNs to form MSNs@ISOIM, after which MSNs@ISOIM were coated with CCM vesicles using ultrasound to prepare the CCM@MSNs-ISOIM nanocomposites (**Figure 1**). The transmission electron microscope (TEM) images showed that particle size uniformity and particle dispersion of MSNs were satisfactory (**Figure 2A**). In addition, TEM also demonstrated that the membrane wraps the outer surface of the nanoparticles and forms a "shell core" structure, which signifies that the MSNs were successfully coated by the cancer cell membrane (**Figure 2B and 2C**). Results from SDS-PAGE (**Figure 2D**) showed that almost all CCM proteins in the CCM@MSNs nanocomplex were retained, and the particle size analyzer (**Figure 2E**) illustrated that the particle size of MSNs was 57.6 ± 0.35 nm, while that of CCM@MSNs was 134.5 ± 0.96 nm, close to that of the cancer cell membrane (132.6 ± 1.12 nm). The potential of MSNs was -31.4 ± 0.61 mV, while that of CCM@MSNs was -26.2 ± 0.73 mV, similar to that of the cancer cell membrane (-27.8 ± 0.56 mV) (**Figure 2F**). UV/vis spectra (**Figure 2G**) depicted that the absorption peaks of CCM@MSNs-ISOIM were 321 nm, 202 nm and 230.5 nm, which were consistent with the absorption peaks of the CCM vesicles, MSNs and ISOIM, respectively, further confirming the CCM@MSNs-ISOIM's successful construction.

Drug loading and release

MSNs were used as a carrier for drug loading, hence, the entrapment efficiency (EE) and loading efficiency (LE) of ISOIM loaded on the CCM@MSNs-ISOIM nanocomplex were verified to be $93.8 \pm 4.7\%$ and $45.4 \pm 2.6\%$, respectively (**Figure 3A**). Based on mesoporous silica materials, pH-Responsive systems usually involve on/off capping or gating (by functional groups[31], polyelectrolytes[32] and ring-shaped compounds[33]) or host-guest interactions (electrostatic[34], covalent bonding[35] and coordination bonding[36]). Due to the complex procedures, it is often costly to prepare the pH responsive systems on a large scale. In order to improve the consequent adsorption and conjugation of molecules, it is usually necessary for the surface of mesoporous silica materials to be modified by introducing additional functional groups, which might put the further applications at risk for the pharmaceutical industry[37]. In this sense, it is of practical significance to develop a simple way to construct the pH-responsive drug delivery system using non-functionalized mesoporous silica materials[38]. Thus, in order to build up an efficient and economical drug delivery system, mesoporous silica nanoparticles (MSNs) are considered

more appropriate to construct a simple drug delivery system through the direct host–guest interactions occurring between MSNs and drug molecules[39]. The *in vitro* ISOIM release characteristics of CCM@MSNs-ISOIM and MSNs-ISOIM were then evaluated (**Figure 3B**). At pH 7.4, the ISOIM release rates of CCM@MSNs-ISOIM and MSNs-ISOIM within 60 h were $24.1\pm 3.1\%$ and $27.0\pm 3.4\%$, respectively, whereas at pH 5.0, the release rates of CCM@MSNs-ISOIM and MSNs-ISOIM were $93.3\pm 3.6\%$ and $95.2\pm 2.9\%$, respectively. The above results show that the release rate of ISOIM at pH 5.0 is faster than that at pH 7.4. According to the *in vitro* drug loading and release experiments, MSNs were found to be efficient drug carriers. The acidic environment of the tumor[40] is conducive to the release of ISOIM from CCM@MSNs-ISOIM, and MSNs possess certain characteristics in low pH value sensitivity.

Biocompatibility studies of CCM@MSNs-ISOIM *in vitro*

The phagocytosis and hemolysis tests verified the biocompatibility of CCM@MSNs-ISOIM nanocomposites *in vitro*. CCM@MSNs and MSNs were labeled with RhB (red fluorescence), respectively, after which RAW264.7 macrophages were treated with CCM@MSNs-RhB and MSNs-RhB for 6 h, respectively. When macrophages are treated with MSNs-RhB, most macrophages demonstrated diffuse red fluorescence, indicating that macrophages strongly phagocytose MSNs (**Figure 4A and 4B**). In contrast, a weak degree of red fluorescence was observed by CCM@MSNs-RhB, indicating that CCM vesicles effectively inhibited the phagocytosis of macrophages. Accordingly, CCM vesicles were observed to enable the nanomaterials' ability of immune escape, reducing the clearance rate. The *in vitro* toxicity of CCM@MSNs and MSNs were also evaluated through the detection of cell viability as well as the hemolysis rate of erythrocytes. Next, the cell viability of OCI-LY10 cells was determined by CCK-8. **Figure 4C** depicts the cell survival rate of OCI-LY10 cells incubated with a series of concentrations of MSNs or CCM@MSNs for 24 h, of which the survival rate of OCI-LY10 cells treated with 100 $\mu\text{g}/\text{mL}$ CCM@MSNs was found to be as high as 90%. As illustrated in **Figure 4D**, no obvious hemolysis was evident in erythrocytes treated with CCM@MSNs and MSNs. Additionally, the hemolysis rate caused by CCM@MSNs was less than 1%, lower than that caused by MSNs. Therefore, the obtained results further indicate that CCM@MSNs possesses excellent biocompatibility.

Verification of targeting and antigen functionalization of cancer cell membranes *in vitro*

In order to determine the targeting of CCM vesicles for lymphoma cells, DSPE-FITC (green fluorescence) was used to label the CCM vesicles. The nucleus of OCI-LY10 was stained blue using Hoechst 33342. As shown in **Figure 5A**, DSPE-FITC-CCM vesicles gathered around the nucleus of OCI-LY10, indicating that CCM vesicles may adhere to OCI-LY10 cells with obvious active targeting abilities. In order to verify the existence of specific membrane antigens on CCM vesicles, cancer cell membrane protein markers and intracellular markers were analyzed via Western Blot. As shown in **Figure 5B**, specific cancer cell membrane marker pan-cadherin and E-cadherin were observed[24, 41]. However, as an indicator of cytoplasmic protein, cytoskeleton protein β -actin is mostly found in the bands of tumor cell lysate, where cancer cell membrane extract contents are less. Therefore, after hypotonic lysis and gradient

centrifugation, the cytoplasmic components of lymphoma cells were basically removed, whereas the proteins on the lymphoma cell membrane remained on its surface.

Effect of CCM@MSNS-ISOIM on the survival rate of OCI-LY10 cells *in vitro*

According to the results of **Figure 5C**, the cell proliferation inhibition rate of OCI-LY10 cells treated with different concentrations of ISOIM for 24 and 48 h were higher than that of cells without ISOIM treatment, and the rate increased with a rise in drug dose, suggesting that the inhibitory effect of ISOIM on the proliferation of OCI-LY10 cells was dose-dependent. For times under 48 h, the cell proliferation inhibition rate gradually increased as time progressed, while the rate at 48 h was higher than that at 24 h ($P < 0.05$). The IC₅₀ score of OCI-LY10 cells at 24 h and 48 h were 87 $\mu\text{g}/\text{mL}$ and 33 $\mu\text{g}/\text{mL}$, respectively. Therefore, the concentration of 33 $\mu\text{g}/\text{mL}$ of free ISOIM was chosen for the follow-up experimental study. At present, the clinical dosage forms of traditional Chinese medicine mainly stay in the traditional dosage forms such as ointment, soup, pill and powder, while the anti-tumor active components contained in some traditional Chinese medicine show such drawbacks as poor water solubility, low bioavailability and low specificity distribution. Besides, most of them are administered orally, and the active, ineffective and even toxic components of the preparation are also introduced into the body[42]. With the drug encapsulated in the nano-drug delivery system, the active components of traditional Chinese medicine can penetrate the reticuloendothelial system, which not only improves the solubility of the drug, but also enhance the performance of the drug in tumor targeting through passive and active targeting. In the meantime, the tumor microenvironment can be taken advantage of to regulate the drug release performance. In this way, the drug can be released either synchronously or sequentially, thus enhancing the curative effect of the drug on the tumor, mitigating the side effects of the drug on the normal tissue, and reducing the toxic and side effects caused by clinical treatment[43]. As mentioned above, in order to address poor water solubility, short half-life, poor stability, low bioavailability and the toxicity of ISOIM, nano-preparation (MSNs@ISOIM and CCM@MSNs-ISOIM) was modified for comparison with free ISOIM to further demonstrate the advantages of nanotechnology and biomimetic nano-modification technology[44]. In order to verify the effects of ISOIM, MSNs@ISOIM and CCM@MSNs-ISOIM in the same experiment, the concentration of ISOIM in both MSNs@ISOIM and CCM@MSNs-ISOIM was set to 33 $\mu\text{g}/\text{mL}$. As depicted in **Figure 5D**, compared to the PBS group, the cell survival rates of the ISOIM, MSNs@ISOIM and CCM@MSNs-ISOIM groups were $68.83 \pm 4.72\%$, $55.80 \pm 6.44\%$ and $35.85 \pm 5.36\%$, respectively. In the same experiment, the effects of ISOIM, MSNs@ISOIM and CCM@MSNs-ISOIM were compared, where the ISOIM concentration of MSNs@ISOIM and CCM@MSNs-ISOIM was found to be 33 $\mu\text{g}/\text{mL}$. The cell survival rate of the MSNs@ISOIM and CCM@MSNs-ISOIM groups were significantly lower than that of the ISOIM group. In short, CCM@MSNs-ISOIM was observed to possess the most significant effects of anti-lymphoma. Similarly, compared to the PBS group, both the ISOIM and CCM@MSNs-ISOIM groups inhibited colony formation of OCI-LY10 cells, and the inhibitory effect of the CCM@MSNs-ISOIM group on OCI-LY10 clone formation was found to be the most significant (**Figure 5E**).

Effects of CCM@MSNS-ISOIM on cell cycle, apoptosis, reactive oxygen species (ROS), mitochondrial membrane potential (MMP) and apoptosis proteins

After OCI-LY10 cells were treated with PBS, ISOIM, MSNs@ISOIM and CCM@MSNs-ISOIM for 24 h, DCFH-DA was used as a fluorescence probe to detect the levels of intracellular ROS. The results of the flow cytometry in **Figure 6A** demonstrated that ROS level in the ISOIM, MSNs@ISOIM and CCM@MSNs-ISOIM groups were significantly higher than that in the PBS group, where CCM@MSNs-ISOIM was observed to be the most significant. Accordingly, CCM@MSNs-ISOIM was suggested to have the strongest effect on ROS production in OCI-LY10 cells. The results of the Annexin V-FITC/PI double staining flow cytometry showed that compared to PBS, the number of living cells decreased significantly, while the number of apoptosis cells increased significantly following ISOIM, MSNs@ISOIM and CCM@MSNs-ISOIM intervention for 48 h, from $5.76 \pm 0.46\%$ and $10.70 \pm 0.48\%$ to $21.48 \pm 1.27\%$ (**Figure 6B**). Moreover, CCM@MSNs-ISOIM was confirmed to induce apoptosis in OCI-LY10 cells. After OCI-LY10 cells were treated with ISOIM, MSNs@ISOIM and CCM@MSNs-ISOIM for 48 h, the proportion of cells in the G2/M phase was $17.15 \pm 0.9\%$, $22.50 \pm 1.02\%$ and $31.93 \pm 2.64\%$, respectively. Compared to the PBS group, the above results showed a gradually increasing trend in the G2/M phase, whereas the cells in the G0/G1 phase showed a relatively decreasing trend. Hence, CCM@MSNs-ISOIM was suggested to induce cell cycle arrest of OCI-LY10 cells in the G2/M phase (**Figure 6C**). Furthermore, the effects of ISOIM, MSNs@ISOIM and CCM@MSNs-ISOIM on MMP of OCI-LY10 cells by flow cytometry with JC-1 staining were evaluated. As shown in **Figure 6D**, the percentage of reduction to mitochondrial membrane potential reached $41.3 \pm 2.5\%$ after treatment with CCM@MSNs-ISOIM nanocomplex, which was higher compared with ISOIM group ($15.6 \pm 1.6\%$). To this effect, CCM@MSNs-ISOIM was inferred to damage the mitochondria of cells, leading to a decrease in MMP. Subsequently, the effects of CCM@MSNs-ISOIM on the level of apoptosis-related proteins were observed via Western Blotting analysis (WB). Compared to PBS, ISOIM and MSNs@ISOIM, CCM@MSNs-ISOIM significantly upregulated the expression of p53, caspase-9 and caspase-3 in OCI-LY10 cells (**Figure 6E**). According to the above results, after CCM@MSNs-ISOIM acts on OCI-LY10 cells *in vitro*, it was concluded that the induced ROS blocks the cell cycle and reduces MMP to promote the release of tumor suppressor gene p53 and caspase proteins, resulting in OCI-LY10 apoptosis.

Verification of CCM@MSNs-ISOIM targeting and its anti-tumor effects *in vivo*

In vitro experiments have confirmed that CCM@MSNs are able to target tumor cells and possess the ability of immune escape, therefore, they may accumulate at the tumor site. To test this hypothesis *in vivo*, Cy5 was used to label CCM@MSNs and MSNs, respectively, with Cy5-MSNs as the control group. Their biological distribution *in vivo* was then evaluated using near-infrared fluorescence imaging. As shown in **Figure 7A**, compared to Cy5-MSNs, the fluorescence intensity of the tumor site gradually increased following tail vein injection of CCM@MSNs-Cy5, indicating that CCM@MSNs accumulated more in the tumor than MSNs. Furthermore, 48 h after intravenous administration, the retention of CCM@MSNs in tumor tissue was found to be significantly higher than that of MSNs. In addition, bright red fluorescence was observed in the tumor tissue treated with CCM@MSNs-Cy5, which was more obvious than that in MSNs-Cy5 (**Figure 7B**), indicating that CCM@MSNs could efficiently deliver drugs. The above results demonstrate that CCM@MSNs nanocomposites have the active tumor targeting abilities as well as a high efficiency in drug delivery and drug release.

Afterward, an anti-tumor test *in vivo* was carried out on OCI-LY10 tumor-bearing nude mice using the CCM@MSNs-ISOIM nanocomplex. When the tumor tissues were treated with PBS, ISOIM, MSNs@ISOIM and CCM@MSNs-ISOIM respectively, compared to the free ISOIM, both MSNs@ISOIM and CCM@MSNs-ISOIM were observed to significantly inhibit tumor growth, of which CCM@MSNs-ISOIM had the most significant inhibitory effect (**Figure 7C**). Simultaneously H&E staining showed that the number of necrotic cells in the CCM@MSNs-ISOIM group was more than that in the other groups (**Figure 7D**), further suggesting that CCM@MSNs-ISOIM possesses better effects in anti-lymphoma than that of the free ISOIM.

CCM@MSNs-ISOIM can block the OCI-LY10 cell cycle and inhibit cell proliferation *in vitro*, hence, Ki-67 immunohistochemical staining was used to detect cell proliferation *in vivo*[45]. As shown in **Figure 7E**, the number of Ki-67 positive cells (brown) in the CCM@MSNs-ISOIM group was found to be significantly less than that in the other groups, suggesting that CCM@MSNs-ISOIM most significantly inhibited the proliferation of lymphoma cells. In order to verify the pro-apoptotic effect of CCM@MSNs-ISOIM *in vivo*, TUNEL staining was utilized to detect apoptosis[46]. As shown in **Figure 7F**, nuclear staining of tumor cells in CCM@MSNs-ISOIM group was found to be positive (brown), which was significantly higher than that in the ISOIM group. The results of TUNEL were consistent with the apoptosis of lymphoma cells induced by CCM@MSNs-ISOIM *in vitro*.

Anti-Lymphoma Mechanism of CCM@MSNs-ISOIM

Apoptosis is one of the main ways in inhibiting the growth of tumor cells, and mitochondria are the most important organelles in the regulation of this process[47]. In addition to supplying energy to cells, mitochondria produce ROS, an apoptosis-inducing signal molecule[48]. ROS can directly trigger the opening of mitochondrial permeability transition pores and decrease the mitochondrial membrane potential, resulting in the activation of the mitochondrial Caspase-dependent apoptosis pathway[49, 50]. CCM@MSNs-ISOIM has a specific and powerful anti-tumor outcome *in vitro*, producing ROS to block the cell cycle while reducing MMP to activate apoptosis-related proteins, which promotes the mitochondrial apoptosis pathway against lymphoma. In order to verify whether CCM@MSNs-ISOIM also inhibits tumors via mitochondrial apoptosis pathway *in vivo*, the expression levels of ROS, MMP, Caspase-9 and Caspase-3 were detected. As shown in **Figure 8A**, after the tumor was treated with PBS, ISOIM, MSNs@ISOIM and CCM@MSNs-ISOIM for 21 days, the red fluorescence signal in the tumor tissue section of the CCM@MSNs-ISOIM group was most evident, indicating that CCM@MSNs-ISOIM produced more ROS than ISOIM alone. Then, a small amount of green fluorescence was observed in the tumor tissue sections of the ISOIM group, whereas diffuse green fluorescence was observed in the tumor tissue sections of the CCM@MSNs-ISOIM group, suggesting that, compared to the other groups, CCM@MSNs-ISOIM contributed to the most significant decrease in MMP (**Figure 8B**). By conducting an immunofluorescence assay to detect the expression of apoptosis protein Caspase-9 and Caspase-3, red (Caspase-9) and green (Caspase-3) fluorescence of the tumor tissue slices in the CCM@MSNs-ISOIM group depicted a strong level of fluorescence, while that of Caspase-9 and Caspase-3 in the other groups were significantly weaker, indicating that these two genes were highly expressed in tumor tissues treated with CCM@MSNs-

ISOIM (**Figure 8C**). P53 protein acts as the guardian of the genome while playing an important role in regulating cell proliferation[51]. Cellular stress like DNA damage and carcinogenic signals can activate the p53 tumor suppressor pathway and coordinate the transcriptional response of hundreds of genes[52]. The study further found that p53 activation induces DNA repair or apoptosis by initiating multiple pathways[53]. In view of the important role of p53 protein activation in cell cycle regulation, the effect of CCM@MSNs-ISOIM on p53 protein activation in NHL was discussed. **Figure 8D** showed that the fluorescence intensity (pink) of p53 in the CCM@MSNs-ISOIM group was more significant than that in the other groups, indicating that CCM@MSNs-ISOIM enhanced the expression of the p53 protein. CCM@MSNs-ISOIM may also induce DNA damage by inducing G2/M phase arrest, promoting the activation of p53 protein, which further leads to apoptosis of lymphoma cells. The corresponding results suggest that CCM@MSNs-ISOIM induces apoptosis of lymphoma through the G2/M/p53 and mitochondrial apoptosis pathways.

Study on the biosafety of CCM@MSNs-ISOIM *in vivo*

To verify whether CCM@MSNs-ISOIM has potential toxicity *in vivo*, the toxicity of PBS, ISOIM, MSNs@ISOIM and CCM@MSNs-ISOIM were evaluated via tail vein injection in nude mice. A histological analysis was then carried out and compared to the PBS group, which demonstrated no significant pathological damage in the major organs of the nude mice treated with CCM@MSNs-ISOIM for 3 weeks (**Figure 9A**). In addition, no significant abnormal changes in the body weight of the nude mice were present in the above four groups within 3 weeks (**Figure 10A**). Furthermore, no abnormal changes were present in WBC, HGB, PLT, ALT, AST, BUN, CRE, CK and Myo in each group (**Figure 10B and 10C**), signifying that CCM@MSNs-ISOIM is non-toxic and possesses good biocompatibility.

Discussion

Searching for effective antineoplastic drugs remains the focus of anti-tumor research. Plants usually contain a variety of anti-tumor compounds, and many plant extracts have been used in the treatment of cancer such as vincristine, paclitaxel and topotecan[54-56]. ISOIM is an active compound extracted from Chinese herbal medicine, which has been shown to possess anti-tumor properties in gastric, lung and ovarian cancer cells[9]. Among other malignancies, NHL has a high incidence and strong heterogeneity. Chemotherapy is commonly used to treat this disease at present, however, patients have different clinical outcomes due to their individual differences, which confers a certain impact on the quality of life for patients[57]. In order to discover novel therapies in the treatment of lymphoma, complementary and alternative medicine may shift its focus to traditional Chinese medicine. Certain traditional Chinese medicines have been shown to induce apoptosis in lymphoma cells[58-60]. However, most effective components in traditional Chinese medicine have various issues such as low water solubility, poor stability, rapid elimination *in vivo*, and high variation in pharmacokinetics[61]. To this effect, the emergence of nanotechnology has reduced such problems[62]. In this paper, MSNs-loaded ISOIM was used as the nano-core (MSNs@ISOIM), while CCM was used to wrap MSNs@ISOIM in order to construct a novel anti-tumor nano-traditional Chinese medicine (CCM@MSNs-ISOIM).

In the present study, CCK-8 detection showed that ISOIM inhibits the proliferation of OCI-LY10 cells in a dose and time-dependent manner. During the CCK-8 experiment, the IC50 value (33 ug/mL) showed that the same concentration of ISOIM, CCM@MSNs-ISOIM may significantly inhibit the proliferation of OCI-LY10 compared to the free ISOIM ($P < 0.05$). Cell clone formation assays also confirmed that CCM@MSNs-ISOIM inhibits the proliferation of OCI-LY10 cells. AnnexinV-FITC/PI double staining flow cytometry was also performed along with the corresponding *in vivo* experiments. TUNEL analysis demonstrated that obvious apoptosis was present in lymphoma cells treated with CCM@MSNs-ISOIM. Furthermore, the results of the flow cytometry showed cell cycle arrest in the G2/M phase at 48 h, and the Ki-67 analysis *in vivo* illustrated that CCM@MSNs-ISOIM could inhibit tumor proliferation.

Apoptosis is programmed cell death, which plays an important role in maintaining normal development and cell homeostasis in mammals. Inducing apoptosis in tumor cells is a promising modality in tumor therapies[63]. The smooth progress of the cell cycle is an important condition for cell proliferation; its interference or destruction may prevent cell proliferation and promote cell apoptosis[64]. Numerous studies have confirmed that the active components in traditional Chinese medicine such as alkaloids, flavonoids and saponins may block tumor cells in the G2/M phase[65-67]. In this phase, extracellular DNA damage signals may induce G2/M phase arrest by regulating the activity of the p53 pathway[68]. The p53-dependent apoptosis pathway is regulated by the p53 protein, which causes mitochondrial release of Cytochrome c, forming apoptosis bodies with Apaf-1 and Pro-Caspase-9, activate Pro-Caspase-9 to form active Caspase-9, and activate effector Caspase-3 through a series of cascade reactions, resulting in tumor cell apoptosis[69]. Here, WB and immunofluorescence were used to explore the mechanism of apoptosis in lymphoma cells induced by CCM@MSNs-ISOIM. The expression of p53, Caspase-9 and Caspase-3 was found to increase significantly, which was more significant than that of the free ISOIM, indicating that the pathway of NHL apoptosis induced by CCM@MSNs-ISOIM may induce tumor cell apoptosis through the p53 pathway. Accordingly, this experiment shows that CCM@MSNs-ISOIM induces NHL to produce high levels of ROS. Similar investigations have shown that high levels of ROS destroys cellular components such as DNA, proteins and lipids, leading to apoptosis[70]. Wang et al confirmed that Erianin caused a large amount of ROS production and induced G2/M phase arrest in osteosarcoma cells[71]. Recent studies have also shown that the function of p53 is closely related to ROS[72]. ROS not only regulates the activity of p53, but also participates in p53-dependent apoptosis[73]. Therefore, CCM@MSNs-ISOIM may induce the production of high levels of ROS and mediate G2/M block in NHL, which leads to apoptosis.

In addition, classical apoptosis mainly encompasses the mitochondrial and death receptor pathways, of which the mitochondrial pathway is closely related to changes in intracellular mitochondrial transmembrane potential[74]. CCM@MSNs-ISOIM was found to reduce the intracellular mitochondrial transmembrane potential in NHL, and CCM@MSNs-ISOIM was also observed to significantly increase ROS levels in NHL, further suggesting that CCM@MSNs-ISOIM may induce apoptosis through the intracellular mitochondrial apoptosis pathway. ROS could act on mitochondria, resulting in changes in mitochondrial membrane permeability, decrease in mitochondrial membrane potential and dissociation of cytochrome C from the inner membrane to the intermembrane space[75]. The decrease in

mitochondrial membrane potential is a result of the expansion of the mitochondria, which leads to the rupture of the outer membrane, releasing important apoptotic factors into the cytoplasm[76]. Cytochrome C, located in the cytoplasm, initiates the cascade activation of caspase, while apoptosis is initiated by Caspase-3, resulting in the destruction of the entire cell structure, dysfunction and apoptosis[77]. At the same time, high levels of ROS are involved in the destruction of cellular components such as DNA, proteins and lipids, leading to apoptosis.

Conclusion

In this study, the novel CCM@MSNs-ISOIM embodies a CCM vesicle encapsulated in a MSNs@-ISOIM nanocomplex, which possesses advantages in active targeting of tumor cells, high drug loading rates, high safety, low pH value sensitivity and immune escape, thus being a highly effective and non-toxic treatment modality for use against NHL. This investigation demonstrated that the nanocomplex mediates the blocking of G2/M to activate p53 and modulate the production of high levels of ROS, finally inducing the anti-tumor pathway in mitochondrial apoptosis. In short, this study suggests that CCM@MSNs-ISOIM may provide new treatment options to be used in the treatment of patients suffering from NHL, which may have potentially beneficial clinical outcomes and social benefits.

References

1. Liu E, Marin D, Banerjee P, Macapinlac HA, Thompson P, Basar R, Nassif Kerbauy L, Overman B, Thall P, Kaplan M, et al: Use of CAR-Transduced Natural Killer Cells in CD19-Positive Lymphoid Tumors. *N Engl J Med* 2020, 382:545-553.
2. Juul MB, Jensen PH, Engberg H, Wehberg S, Dessau-Arp A, Haziri D, Kristensen HB, Baech J, Schurmann L, Clausen MR, et al: Treatment strategies and outcomes in diffuse large B-cell lymphoma among 1011 patients aged 75 years or older: A Danish population-based cohort study. *Eur J Cancer* 2018, 99:86-96.
3. Chihara D, Westin JR, Oki Y, Ahmed MA, Do B, Fayad LE, Hagemester FB, Romaguera JE, Fanale MA, Lee HJ, et al: Management strategies and outcomes for very elderly patients with diffuse large B-cell lymphoma. *Cancer* 2016, 122:3145-3151.
4. Gutsch J, Werthmann PG, Rosenwald A, Kienle GS: Complete Remission and Long-term Survival of a Patient with a Diffuse Large B-cell Lymphoma Under *Viscum album* Extracts After Resistance to R-CHOP: A Case Report. *Anticancer Res* 2018, 38:5363-5369.
5. Mondal S, Bandyopadhyay S, Ghosh MK, Mukhopadhyay S, Roy S, Mandal C: Natural products: promising resources for cancer drug discovery. *Anticancer Agents Med Chem* 2012, 12:49-75.
6. Fu J, Dong X, Yin X, Yang C, Wang W, Du X, Zhang X, Ni J: A new polymorph of isoimperatorin. *Pharm Dev Technol* 2018, 23:849-856.
7. Kim YK, Kim YS, Ryu SY: Antiproliferative effect of furanocoumarins from the root of *Angelica dahurica* on cultured human tumor cell lines. *Phytother Res* 2007, 21:288-290.

8. Tong K, Xin C, Chen W: Isoimperatorin induces apoptosis of the SGC-7901 human gastric cancer cell line via the mitochondria-mediated pathway. *Oncol Lett* 2017, 13:518-524.
9. Yang HB, Gao HR, Ren YJ, Fang FX, Tian HT, Gao ZJ, Song W, Huang SM, Zhao AF: Effects of isoimperatorin on proliferation and apoptosis of human gastric carcinoma cells. *Oncol Lett* 2018, 15:7993-7998.
10. Liao J, Zheng H, Fei Z, Lu B, Zheng H, Li D, Xiong X, Yi Y: Tumor-targeting and pH-responsive nanoparticles from hyaluronic acid for the enhanced delivery of doxorubicin. *Int J Biol Macromol* 2018, 113:737-747.
11. Li R, Liu B, Gao J: The application of nanoparticles in diagnosis and theranostics of gastric cancer. *Cancer Lett* 2017, 386:123-130.
12. Li T, Wang P, Guo W, Huang X, Tian X, Wu G, Xu B, Li F, Yan C, Liang XJ, Lei H: Natural Berberine-Based Chinese Herb Medicine Assembled Nanostructures with Modified Antibacterial Application. *ACS Nano* 2019, 13:6770-6781.
13. Bu Y, Hu Q, Zhang X, Li T, Xie X, Wang S: A novel cell membrane-cloaked magnetic nanogripper with enhanced stability for drug discovery. *Biomater Sci* 2020, 8:673-681.
14. Cho Y, Shi R, Borgens RB, Ivanisevic A: Functionalized mesoporous silica nanoparticle-based drug delivery system to rescue acrolein-mediated cell death. *Nanomedicine (Lond)* 2008, 3:507-519.
15. Juere E, Florek J, Bouchoucha M, Jambhrunkar S, Wong KY, Popat A, Kleitz F: In Vitro Dissolution, Cellular Membrane Permeability, and Anti-Inflammatory Response of Resveratrol-Encapsulated Mesoporous Silica Nanoparticles. *Mol Pharm* 2017, 14:4431-4441.
16. Castillo RR, Colilla M, Vallet-Regi M: Advances in mesoporous silica-based nanocarriers for co-delivery and combination therapy against cancer. *Expert Opin Drug Deliv* 2017, 14:229-243.
17. Liu Y, Luo JS, Chen XJ, Liu W, Chen TK: Cell Membrane Coating Technology: A Promising Strategy for Biomedical Applications. *Nano-Micro Letters* 2019, 11:46.
18. Ye H, Wang K, Lu Q, Zhao J, Wang M, Kan Q, Zhang H, Wang Y, He Z, Sun J: Nanosponges of circulating tumor-derived exosomes for breast cancer metastasis inhibition. *Biomaterials* 2020, 242:119932.
19. Gao M, Liang C, Song X, Chen Q, Jin Q, Wang C, Liu Z: Erythrocyte-Membrane-Enveloped Perfluorocarbon as Nanoscale Artificial Red Blood Cells to Relieve Tumor Hypoxia and Enhance Cancer Radiotherapy. *Adv Mater* 2017, 29.
20. Xuan M, Shao J, Dai L, Li J, He Q: Macrophage Cell Membrane Camouflaged Au Nanoshells for in Vivo Prolonged Circulation Life and Enhanced Cancer Photothermal Therapy. *ACS Appl Mater Interfaces* 2016, 8:9610-9618.
21. Wei X, Ying M, Dehaini D, Su Y, Kroll AV, Zhou J, Gao W, Fang RH, Chien S, Zhang L: Nanoparticle Functionalization with Platelet Membrane Enables Multifactorial Biological Targeting and Detection of Atherosclerosis. *ACS Nano* 2018, 12:109-116.
22. Margineanu E, Cotrutz CE, Cotrutz C: Correlation between E-cadherin abnormal expressions in different types of cancer and the process of metastasis. *Rev Med Chir Soc Med Nat Iasi* 2008,

- 112:432-436.
23. Li B, Shi H, Wang F, Hong D, Lv W, Xie X, Cheng X: Expression of E-, P- and N-Cadherin and Its Clinical Significance in Cervical Squamous Cell Carcinoma and Precancerous Lesions. *PLoS One* 2016, 11:e0155910.
 24. Fang RH, Hu CM, Luk BT, Gao W, Copp JA, Tai Y, O'Connor DE, Zhang L: Cancer cell membrane-coated nanoparticles for anticancer vaccination and drug delivery. *Nano Lett* 2014, 14:2181-2188.
 25. Zhong X, Rescorla FJ: Cell surface adhesion molecules and adhesion-initiated signaling: understanding of anoikis resistance mechanisms and therapeutic opportunities. *Cell Signal* 2012, 24:393-401.
 26. Chikata E: Aggregate-forming ability of liver cell lines derived from DAB-fed rats in rotation culture. *Acta Med Okayama* 1971, 25:57-64.
 27. Zhao Q, Li J, Wu B, Shang Y, Huang X, Dong H, Liu H, Chen W, Gui R, Nie X-M: Smart Biomimetic Nanocomposites Mediate Mitochondrial Outcome Through Aerobic Glycolysis Reprogramming: a Promising Treatment for Lymphoma. *ACS applied materials & interfaces* 2020.
 28. Lai P-Y, Huang R-Y, Lin S-Y, Lin Y-H, Chang C-W: Biomimetic stem cell membrane-camouflaged iron oxide nanoparticles for theranostic applications. *Rsc Advances* 2015, 5:98222-98230.
 29. Yi X, Lian X, Dong J, Wan Z, Xia C, Song X, Fu Y, Gong T, Zhang Z: Co-delivery of Pirarubicin and Paclitaxel by Human Serum Albumin Nanoparticles to Enhance Antitumor Effect and Reduce Systemic Toxicity in Breast Cancers. *Mol Pharm* 2015, 12:4085-4098.
 30. Yan F, Li H, Zhong Z, Zhou M, Lin Y, Tang C, Li C: Co-Delivery of Prednisolone and Curcumin in Human Serum Albumin Nanoparticles for Effective Treatment of Rheumatoid Arthritis. *Int J Nanomedicine* 2019, 14:9113-9125.
 31. Chen Y, Ai K, Liu J, Sun G, Yin Q, Lu L: Multifunctional envelope-type mesoporous silica nanoparticles for pH-responsive drug delivery and magnetic resonance imaging. *Biomaterials* 2015, 60:111-120.
 32. Lee CH, Cheng SH, Huang IP, Souris JS, Yang CS, Mou CY, Lo LW: Intracellular pH-responsive mesoporous silica nanoparticles for the controlled release of anticancer chemotherapeutics. *Angew Chem Int Ed Engl* 2010, 49:8214-8219.
 33. Thomas CR, Ferris DP, Lee JH, Choi E, Cho MH, Kim ES, Stoddart JF, Shin JS, Cheon J, Zink JI: Noninvasive remote-controlled release of drug molecules in vitro using magnetic actuation of mechanized nanoparticles. *J Am Chem Soc* 2010, 132:10623-10625.
 34. Ma Y, Zhou L, Zheng H, Xing L, Li C, Cui J, Che S: pH-responsive mitoxantrone (MX) delivery using mesoporous silica nanoparticles (MSN). *Journal of Materials Chemistry* 2011.
 35. Wang B, Xu C, Xie J, Yang Z, Sun S: pH controlled release of chromone from chromone-Fe₃O₄ nanoparticles. *J Am Chem Soc* 2008, 130:14436-14437.
 36. Xing L, Zheng H, Cao Y, Che S: Coordination polymer coated mesoporous silica nanoparticles for pH-responsive drug release. *Adv Mater* 2012, 24:6433-6437.

37. Zheng H, Tai CW, Su J, Zou X, Gao F: Ultra-small mesoporous silica nanoparticles as efficient carriers for pH responsive releases of anti-cancer drugs. *Dalton Trans* 2015, 44:20186-20192.
38. Ma YH, Zhou L, Zheng HQ, Xing L, Li CG, Cui JH, Che SA: pH-responsive mitoxantrone (MX) delivery using mesoporous silica nanoparticles (MSN). *Journal of Materials Chemistry* 2011, 21:9483-9486.
39. Passagne I, Morille M, Rousset M, Pujalte I, L'Azou B: Implication of oxidative stress in size-dependent toxicity of silica nanoparticles in kidney cells. *Toxicology* 2012, 299:112-124.
40. Monti D, Tampucci S, Zucchetti E, Granchi C, Minutolo F, Piras AM: Effect of Tumor Relevant Acidic Environment in the Interaction of a N-hydroxyindole-2-Carboxylic Derivative with the Phospholipid Bilayer. *Pharm Res* 2018, 35:175.
41. Chen M, Chen M, He J: Cancer cell membrane cloaking nanoparticles for targeted co-delivery of doxorubicin and PD-L1 siRNA. *Artif Cells Nanomed Biotechnol* 2019, 47:1635-1641.
42. Feng J, Xu M, Wang J, Zhou S, Liu Y, Liu S, Huang Y, Chen Y, Chen L, Song Q, et al: Sequential delivery of nanoformulated alpha-mangostin and triptolide overcomes permeation obstacles and improves therapeutic effects in pancreatic cancer. *Biomaterials* 2020, 241:119907.
43. Wang D, Zhou J, Chen R, Shi R, Zhao G, Xia G, Li R, Liu Z, Tian J, Wang H, et al: Controllable synthesis of dual-MOFs nanostructures for pH-responsive artemisinin delivery, magnetic resonance and optical dual-modal imaging-guided chemo/photothermal combinational cancer therapy. *Biomaterials* 2016, 100:27-40.
44. Zhang W, Wang M, Tang W, Wen R, Zhou S, Lee C, Wang H, Jiang W, Delahunty IM, Zhen Z, et al: Nanoparticle-Laden Macrophages for Tumor-Tropic Drug Delivery. *Adv Mater* 2018, 30:e1805557.
45. Sun X, Kaufman PD: Ki-67: more than a proliferation marker. *Chromosoma* 2018, 127:175-186.
46. Kyrylkova K, Kyryachenko S, Leid M, Kioussi C: Detection of apoptosis by TUNEL assay. *Methods Mol Biol* 2012, 887:41-47.
47. Bock FJ, Tait SWG: Mitochondria as multifaceted regulators of cell death. *Nat Rev Mol Cell Biol* 2020, 21:85-100.
48. Cheng Y, Kong X, Chang Y, Feng Y, Zheng R, Wu X, Xu K, Gao X, Zhang H: Spatiotemporally Synchronous Oxygen Self-Supply and Reactive Oxygen Species Production on Z-Scheme Heterostructures for Hypoxic Tumor Therapy. *Adv Mater* 2020:e1908109.
49. Asghari MH, Abdollahi M, de Oliveira MR, Nabavi SM: A review of the protective role of melatonin during phosphine-induced cardiotoxicity: focus on mitochondrial dysfunction, oxidative stress and apoptosis. *J Pharm Pharmacol* 2017, 69:236-243.
50. Ricci JE, Munoz-Pinedo C, Fitzgerald P, Bailly-Maitre B, Perkins GA, Yadava N, Scheffler IE, Ellisman MH, Green DR: Disruption of mitochondrial function during apoptosis is mediated by caspase cleavage of the p75 subunit of complex I of the electron transport chain. *Cell* 2004, 117:773-786.
51. Labuschagne CF, Zani F, Vousden KH: Control of metabolism by p53 - Cancer and beyond. *Biochim Biophys Acta Rev Cancer* 2018, 1870:32-42.

52. Tornesello ML, Annunziata C, Tornesello AL, Buonaguro L, Buonaguro FM: Human Oncoviruses and p53 Tumor Suppressor Pathway Deregulation at the Origin of Human Cancers. *Cancers (Basel)* 2018, 10.
53. Li T, Liu X, Jiang L, Manfredi J, Zha S, Gu W: Loss of p53-mediated cell-cycle arrest, senescence and apoptosis promotes genomic instability and premature aging. *Oncotarget* 2016, 7:11838-11849.
54. Dyer O: US paediatric oncologists are forced to prioritise patients for vincristine treatment as supplies run short. *BMJ* 2019, 367:l6086.
55. Sofias AM, Dunne M, Storm G, Allen C: The battle of "nano" paclitaxel. *Adv Drug Deliv Rev* 2017, 122:20-30.
56. Thomas A, Redon CE, Sciuto L, Padiernos E, Ji J, Lee MJ, Yuno A, Lee S, Zhang Y, Tran L, et al: Phase I Study of ATR Inhibitor M6620 in Combination With Topotecan in Patients With Advanced Solid Tumors. *J Clin Oncol* 2018, 36:1594-1602.
57. Friedberg JW: How I treat double-hit lymphoma. *Blood* 2017, 130:590-596.
58. Huang Y, Hu J, Zheng J, Li J, Wei T, Zheng Z, Chen Y: Down-regulation of the PI3K/Akt signaling pathway and induction of apoptosis in CA46 Burkitt lymphoma cells by baicalin. *J Exp Clin Cancer Res* 2012, 31:48.
59. Li D, Li C, Song Y, Zhou M, Sun X, Zhu X, Zhang F, Zhou C, Huan Y, Xia S, et al: Marsdenia tenacissima extract and its functional components inhibits proliferation and induces apoptosis of human Burkitt leukemia/lymphoma cells in vitro and in vivo. *Leuk Lymphoma* 2016, 57:419-428.
60. Meng L, Wen Y, Zhou M, Li J, Wang T, Xu P, Ouyang J: Ouabain induces apoptosis and autophagy in Burkitt's lymphoma Raji cells. *Biomed Pharmacother* 2016, 84:1841-1848.
61. Fan W, Yung B, Huang P, Chen X: Nanotechnology for Multimodal Synergistic Cancer Therapy. *Chem Rev* 2017, 117:13566-13638.
62. Khan S, Setua S, Kumari S, Dan N, Massey A, Hafeez BB, Yallapu MM, Stiles ZE, Alabkaa A, Yue J, et al: Superparamagnetic iron oxide nanoparticles of curcumin enhance gemcitabine therapeutic response in pancreatic cancer. *Biomaterials* 2019, 208:83-97.
63. Su Z, Yang Z, Xu Y, Chen Y, Yu Q: Apoptosis, autophagy, necroptosis, and cancer metastasis. *Mol Cancer* 2015, 14:48.
64. Xie X, Lin W, Zheng W, Chen T, Yang H, Sun L, Huang F, Wang Z, Lin H, Chen L, et al: Downregulation of G2/mitotic-specific cyclinB1 triggers autophagy via AMPK-ULK1-dependent signal pathway in nasopharyngeal carcinoma cells. *Cell Death Dis* 2019, 10:94.
65. Mittal A, Tabasum S, Singh RP: Berberine in combination with doxorubicin suppresses growth of murine melanoma B16F10 cells in culture and xenograft. *Phytomedicine* 2014, 21:340-347.
66. Ujiki MB, Ding XZ, Salabat MR, Bentrem DJ, Golkar L, Milam B, Talamonti MS, Bell RH, Jr., Iwamura T, Adrian TE: Apigenin inhibits pancreatic cancer cell proliferation through G2/M cell cycle arrest. *Mol Cancer* 2006, 5:76.

67. Alam F, Najum Us Saqib Q, Waheed A: Cytotoxic activity of extracts and crude saponins from *Zanthoxylum armatum* DC. against human breast (MCF-7, MDA-MB-468) and colorectal (Caco-2) cancer cell lines. *BMC Complement Altern Med* 2017, 17:368.
68. Charrier-Savournin FB, Chateau MT, Gire V, Sedivy J, Piette J, Dulic V: p21-Mediated nuclear retention of cyclin B1-Cdk1 in response to genotoxic stress. *Mol Biol Cell* 2004, 15:3965-3976.
69. Miura T, Chiba M, Kasai K, Nozaka H, Nakamura T, Shoji T, Kanda T, Ohtake Y, Sato T: Apple procyanidins induce tumor cell apoptosis through mitochondrial pathway activation of caspase-3. *Carcinogenesis* 2008, 29:585-593.
70. Maiuri MC, Zalckvar E, Kimchi A, Kroemer G: Self-eating and self-killing: crosstalk between autophagy and apoptosis. *Nat Rev Mol Cell Biol* 2007, 8:741-752.
71. Wang H, Zhang T, Sun W, Wang Z, Zuo D, Zhou Z, Li S, Xu J, Yin F, Hua Y, Cai Z: Erianin induces G2/M-phase arrest, apoptosis, and autophagy via the ROS/JNK signaling pathway in human osteosarcoma cells in vitro and in vivo. *Cell Death Dis* 2016, 7:e2247.
72. Liu B, Chen Y, St Clair DK: ROS and p53: a versatile partnership. *Free Radic Biol Med* 2008, 44:1529-1535.
73. Chen YY, Wen SY, Deng CM, Yin XF, Sun ZH, Jiang MM, He QY: Proteomic Analysis Reveals that Odoroside A Triggers G2/M Arrest and Apoptosis in Colorectal Carcinoma Through ROS-p53 Pathway. *Proteomics* 2019, 19:e1900092.
74. Brokatzky D, Dorflinger B, Haimovici A, Weber A, Kirschnek S, Vier J, Metz A, Henschel J, Steinfeldt T, Gentle IE, Hacker G: A non-death function of the mitochondrial apoptosis apparatus in immunity. *EMBO J* 2019, 38.
75. Djavaheri-Mergny M, Wietzerbin J, Besancon F: 2-Methoxyestradiol induces apoptosis in Ewing sarcoma cells through mitochondrial hydrogen peroxide production. *Oncogene* 2003, 22:2558-2567.
76. de Faria PA, Bettanin F, Cunha RL, Paredes-Gamero EJ, Homem-de-Mello P, Nantes IL, Rodrigues T: Cytotoxicity of phenothiazine derivatives associated with mitochondrial dysfunction: a structure-activity investigation. *Toxicology* 2015, 330:44-54.
77. Guerra-Castellano A, Diaz-Quintana A, Perez-Mejias G, Elena-Real CA, Gonzalez-Arzola K, Garcia-Maurino SM, De la Rosa MA, Diaz-Moreno I: Oxidative stress is tightly regulated by cytochrome c phosphorylation and respirasome factors in mitochondria. *Proc Natl Acad Sci U S A* 2018, 115:7955-7960.

Declarations

Authors' contributions

Conceived and designed the experiments: R. Gui and J. Li. Q Zhao carried out the experiment. Y Sun, B Wu, Y Shang, X Huang, H Dong and H Liu contributed to analyze the experimental results. Q Zhao wrote the manuscript. All authors read and approved the final manuscript.

Acknowledgements

Not applicable.

Competing interests

The authors declare that they have no competing interests.

Availability of data and materials

All data generated or analyzed during this study are included in this published article.

Consent for publication

Not applicable.

Ethics approval and consent to participate

The authors obtained authorization to perform the tests on animal from the committee of Xiangya third Hospital of Central South University.

Funding

This work was supported by the National Natural Science Foundation of China (No. 8157120841); the Fundamental Research Funds for the Central Universities of Central South University under Grant (No. 2019zzts366); the guiding project of Qinghai Provincial Health and Family Planning Commission (2018-wjzdx-17, 2020-wjzdx-38).

Publisher's Note

Springer Nature remains neutral with regard to jurisdictional claims in published maps and institutional affiliations.

Corresponding Author

*E-mail: zndxgr@163.com (R. Gui)

*E-mail address: lj168301018@csu.edu.cn (J. Li)

Author information

Affiliations

^a Department of Blood Transfusion, the Third Xiangya Hospital, Central South University, Changsha 410013, P. R. China

^b Department of Hematology, the Qinghai Provincial People's Hospital, Xining

810007, P. R. China

^c School of Nursing, Medical College, Soochow University, Suzhou 215006, P. R. China

^d Department of Emergency, the Qinghai Provincial People's Hospital, Xining

810007, P. R. China

^e Department of Transfusion Medicine, Wuhan Hospital of Traditional Chinese and Western Medicine, Tongji Medical College, Huazhong University of Science and Technology, Wuhan 430022, P. R. China

^f College of Chemistry and Chemical Engineering, Central South University, Changsha 410083, P. R. China

Figures

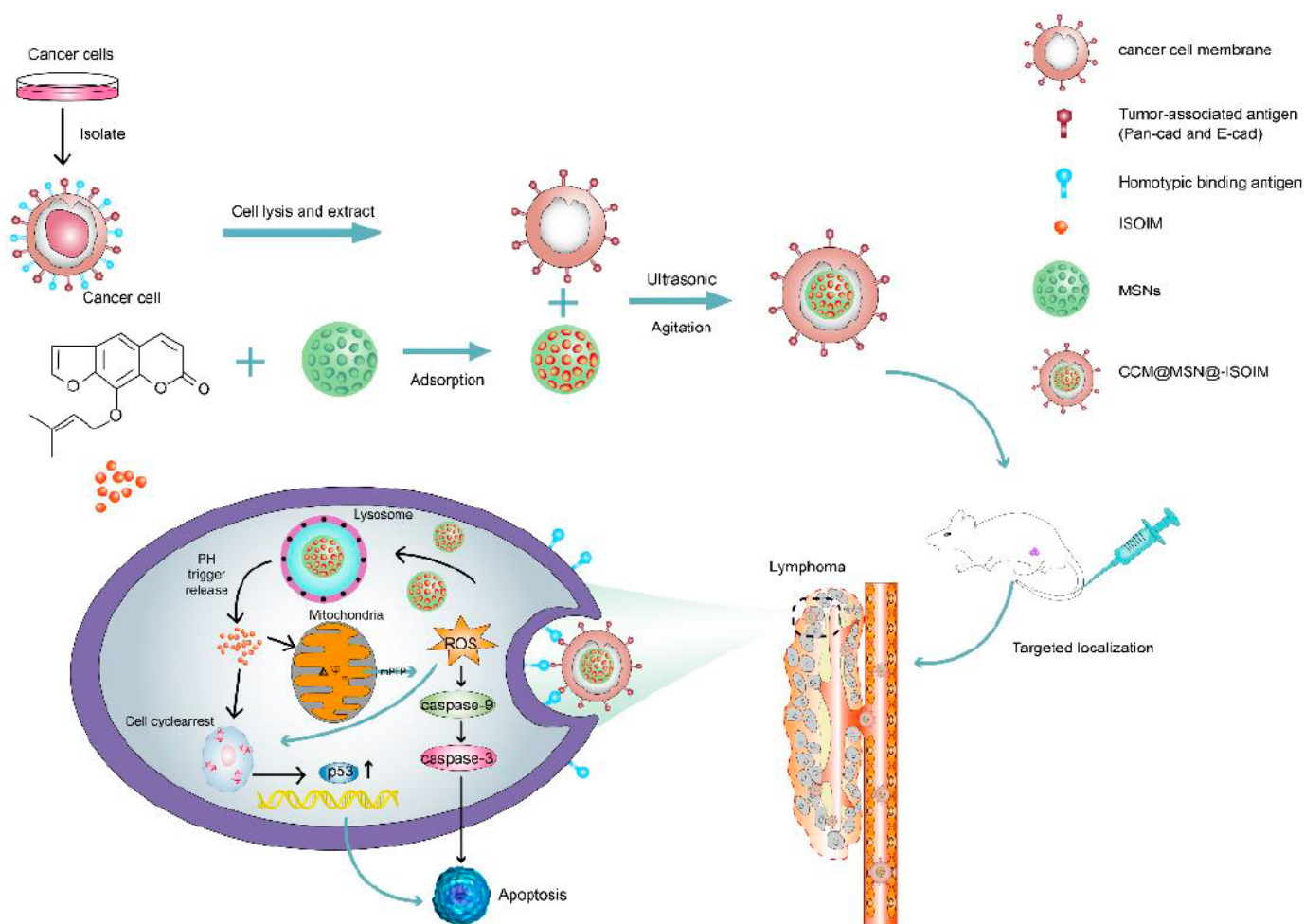


Figure 1

Schematic diagram of CCM@MSNs-ISOIM construction and its targeted therapeutic mechanisms in lymphoma.

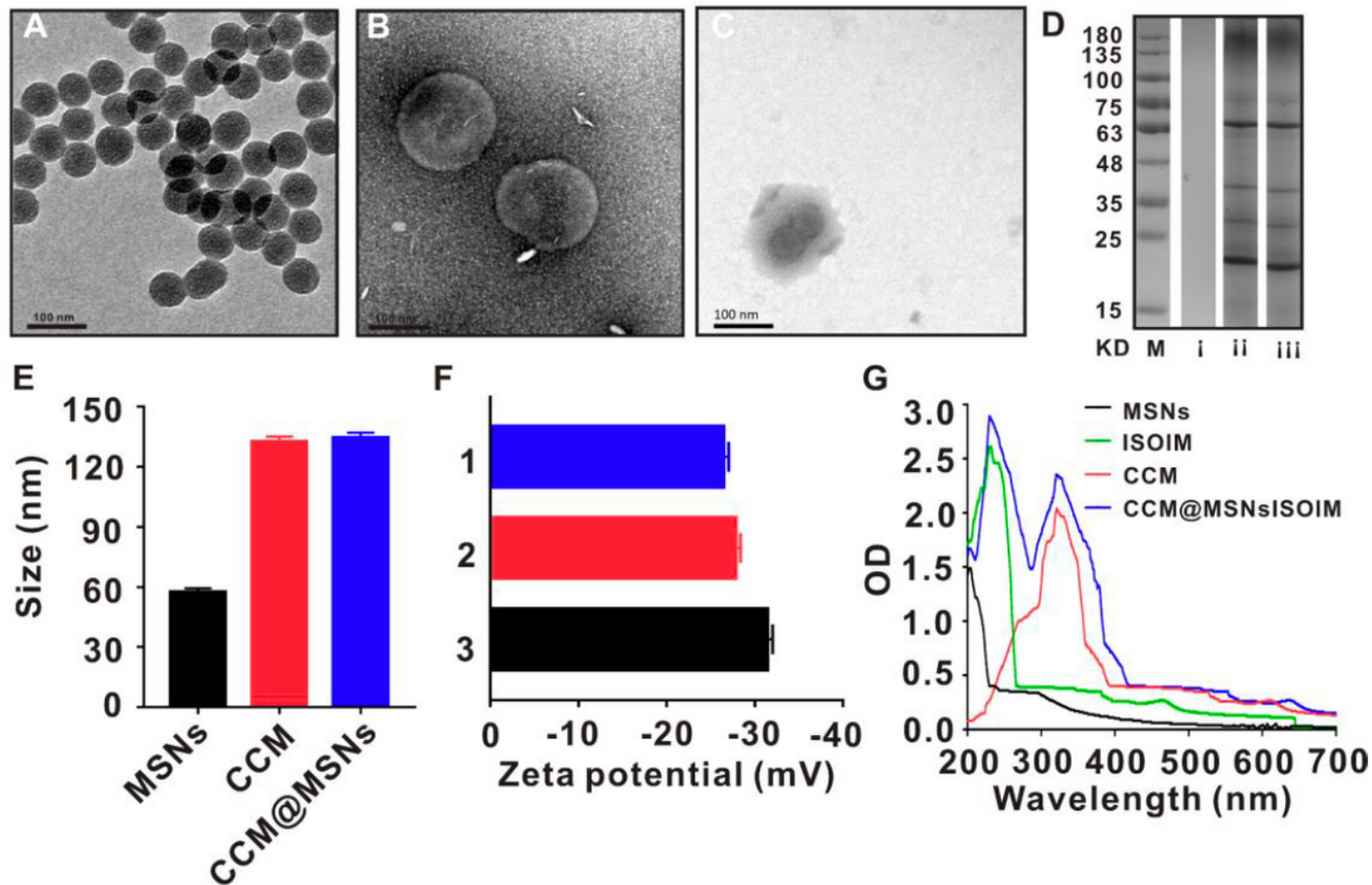


Figure 2

Characteristics of CCM@MSNs-ISOIM. TEM images: (A) MSNs, (B) CCM vesicles, (C) CCM vesicles camouflage MSNs. (D) SDS-PAGE protein analysis. M) markers, i) MSNs, ii) CCM vesicles, and iii) CCM vesicles camouflage MSNs. (E and F) The particle size and Zeta potential of 1) MSNs, 2) CCM vesicles and 3) CCM vesicles camouflaged MSNs, respectively. (G) UV-Vis spectra of ISOIM, MSNs, CCM vesicles and CCM@MSNs-ISOIM. Data are mean \pm SD (n=3).

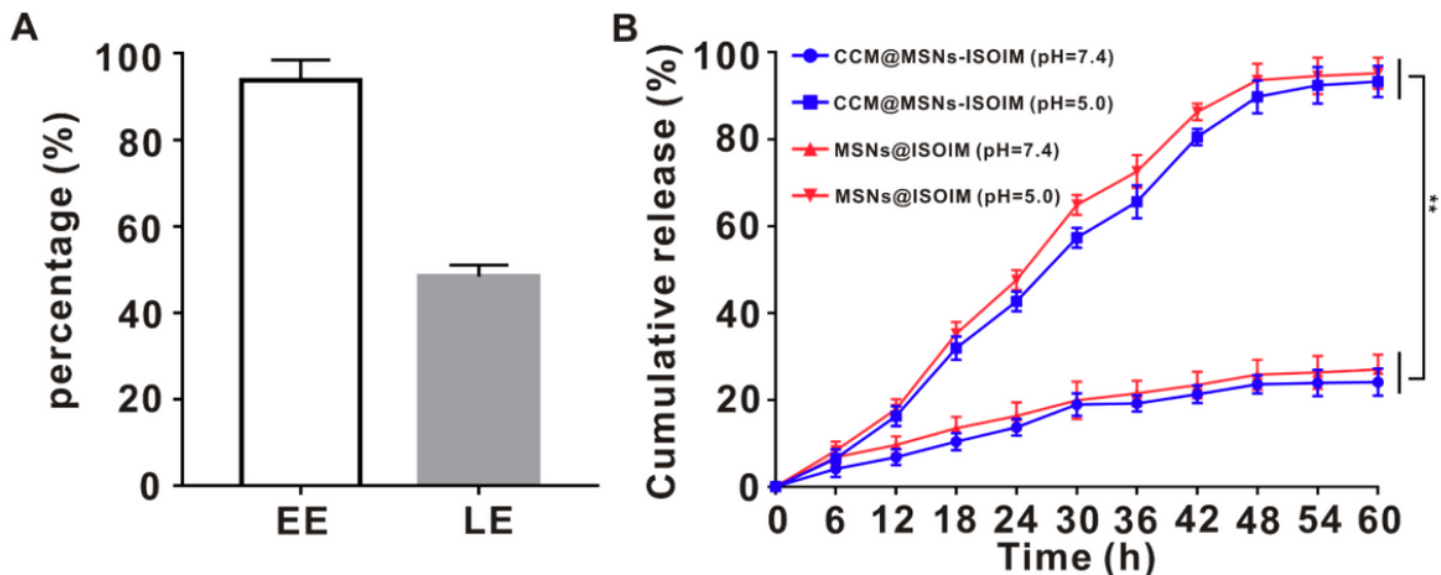


Figure 3

Drug loading and release. (A) EE and LE of MSNs. (B) The cumulative release rate of ISOIM from CCM@MSNs-ISOIM or MSNs@ISOIM at different pH values (7.4 and 5.0). Data are mean \pm SD (n= (* p <0.05 and ** p <0.01).

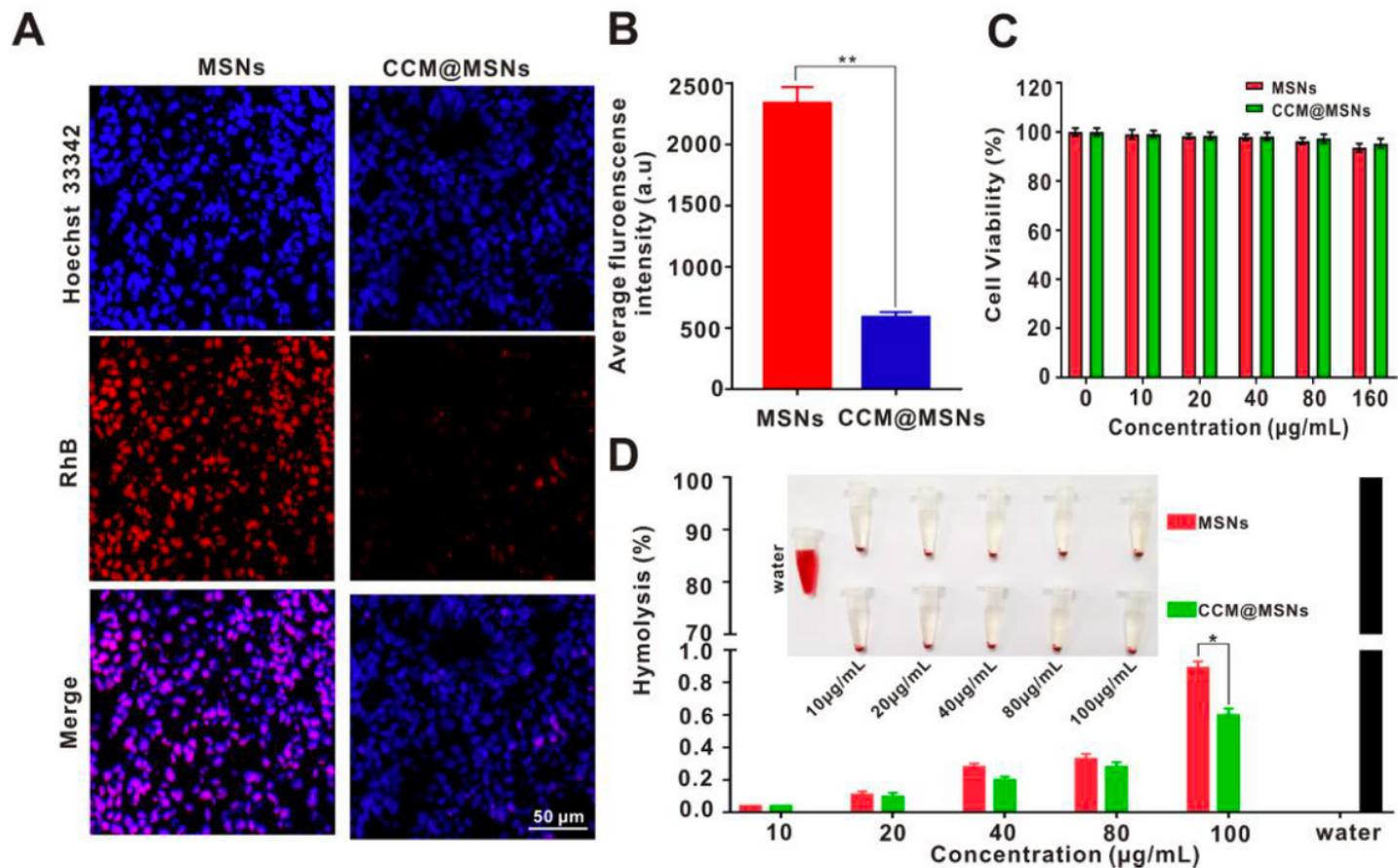


Figure 4

Biocompatibility of CCM@MSNs-ISOIM. (LCFM images of RAW264.7 macrophages co cultured with MSNs-RhB and CCM@MSNs-RhB for 6 h. Scale bar: 50 μm . (The fluorescence intensity of cells treated with MSNs RhB and CCM@MSNs-RhB was quantified by fluorophotometer. (The cell viability of OCI-LY10 cells treated with different concentrations of MSNs and CCM@MSNs. (D) Hemolysis rate of red blood cells in different concentrations of MSNs and CCM@MSNs. Data are mean \pm SD (n=3), (* $p < 0.05$ and $p < 0.01$).

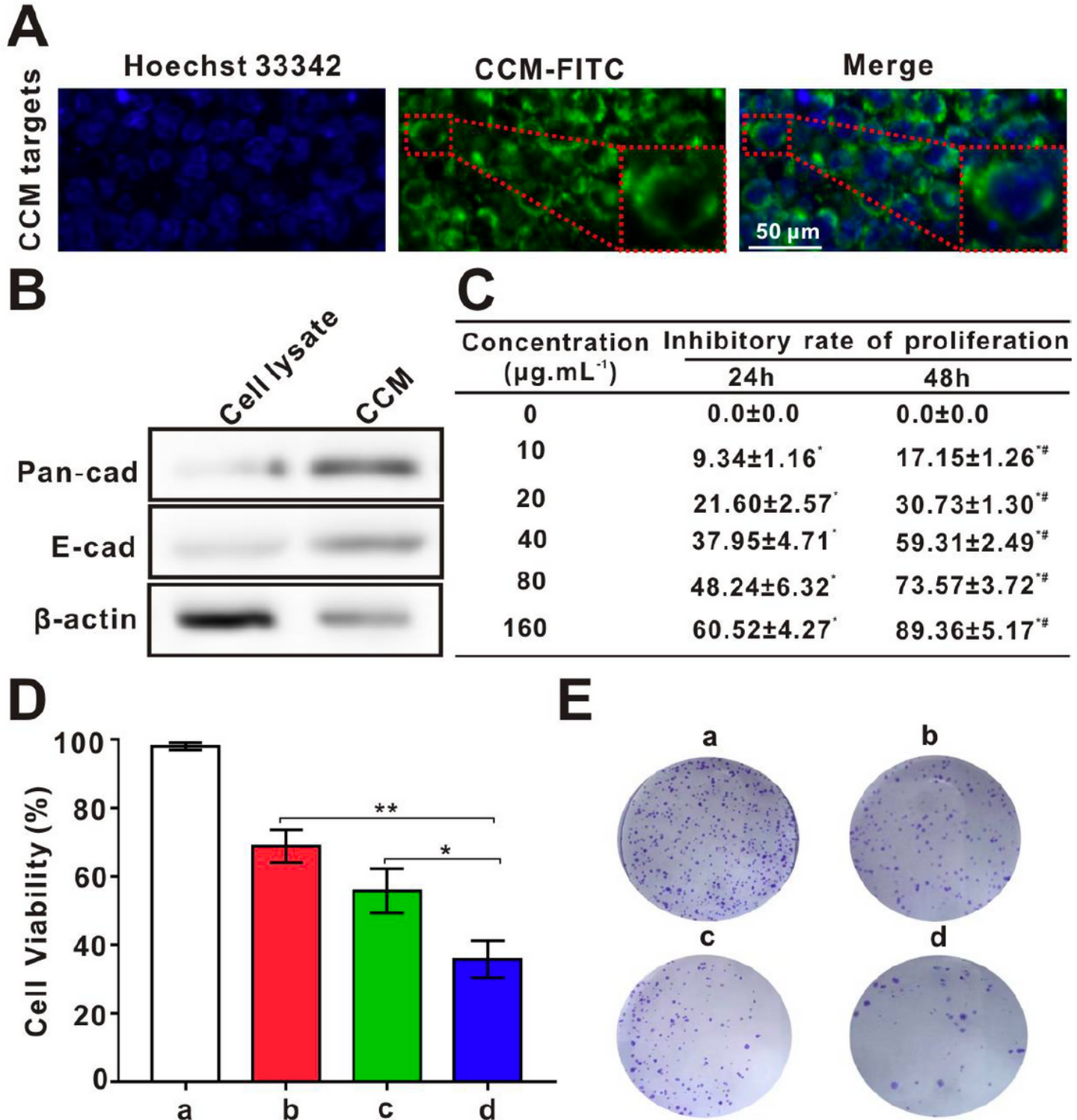


Figure 5

Study on the targeting of CCM and the anti-tumor effect of CCM@MSNs-ISOIM In Vitro . (A) The LCFM images of DSPE-FITC labeled CCM vesicles were co-cultured with OCI-LY10 cells for 6 h. (B) Detection of membrane specific protein Pan-cadherin and E-cadherin by Western blotting. (C) Proliferation inhibition rate of OCI-LY10 cells treated with different concentrations of ISOIM for 24 h and 48 h . (* $p < 0.05$ compared with $0 \mu\text{g} \cdot \text{mL}^{-1}$, $p < 0.05$ compared with 24 h). (D) Survival rate of OCI-LY10 cells treated with a) PBS, b) ISOIM, c) MSNs@ISOIM and d) CCM@MSNs-ISOIM for 48 h respectively (E) Representative images of colony formation of OCI-LY10 cells treated with a) PBS, b) ISOIM , c) MSNs@ISOIM and d) CCM@MSNs-ISOIM for 14 days. Data are presented as the mean \pm SD (n =3). (* $p < 0.05$, $p < 0.01$).

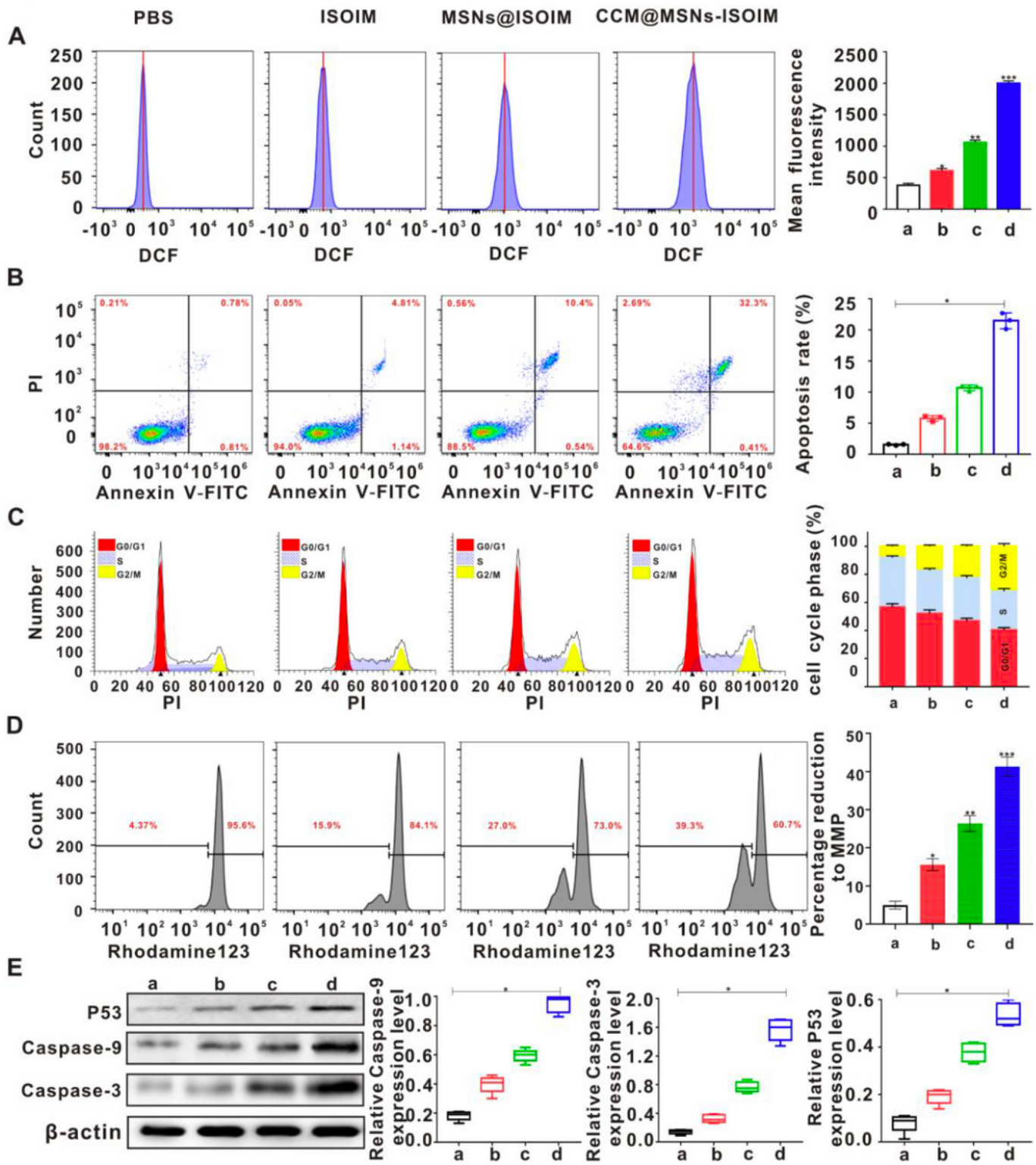


Figure 6

Anti-lymphoma effect of CCM@MSNs ISOIM in vitro was detected by flow cytometry and detection of apoptosis related protein expression by WB. OCI-LY10 cells were treated with a) PBS, b) ISOIM, c) MSNs@ISOIM and d) CCM@MSNs-ISOIM for 48 h respectively. (ROS level of OCI-LY10 cells was detected by flow cytometry after 48 h. (B) flow cytometry was used to detect the apoptosis of OCI-LY10 cells after 48 h. (C) flow cytometry was used to detect the changes of cell cycle of OCI-LY10 cells after 48 h.

h. (D) flow cytometry was used to detect the changes of MMP in OCI-LY10 cells after 48 h. (E) The expression of apoptosis related proteins p53, Caspase-9 and Caspase-3 were detected by Western blotting. Data are presented as the mean \pm SD (n = 3). (* p < 0.05, ** p < 0.01, and *** p < 0.001).

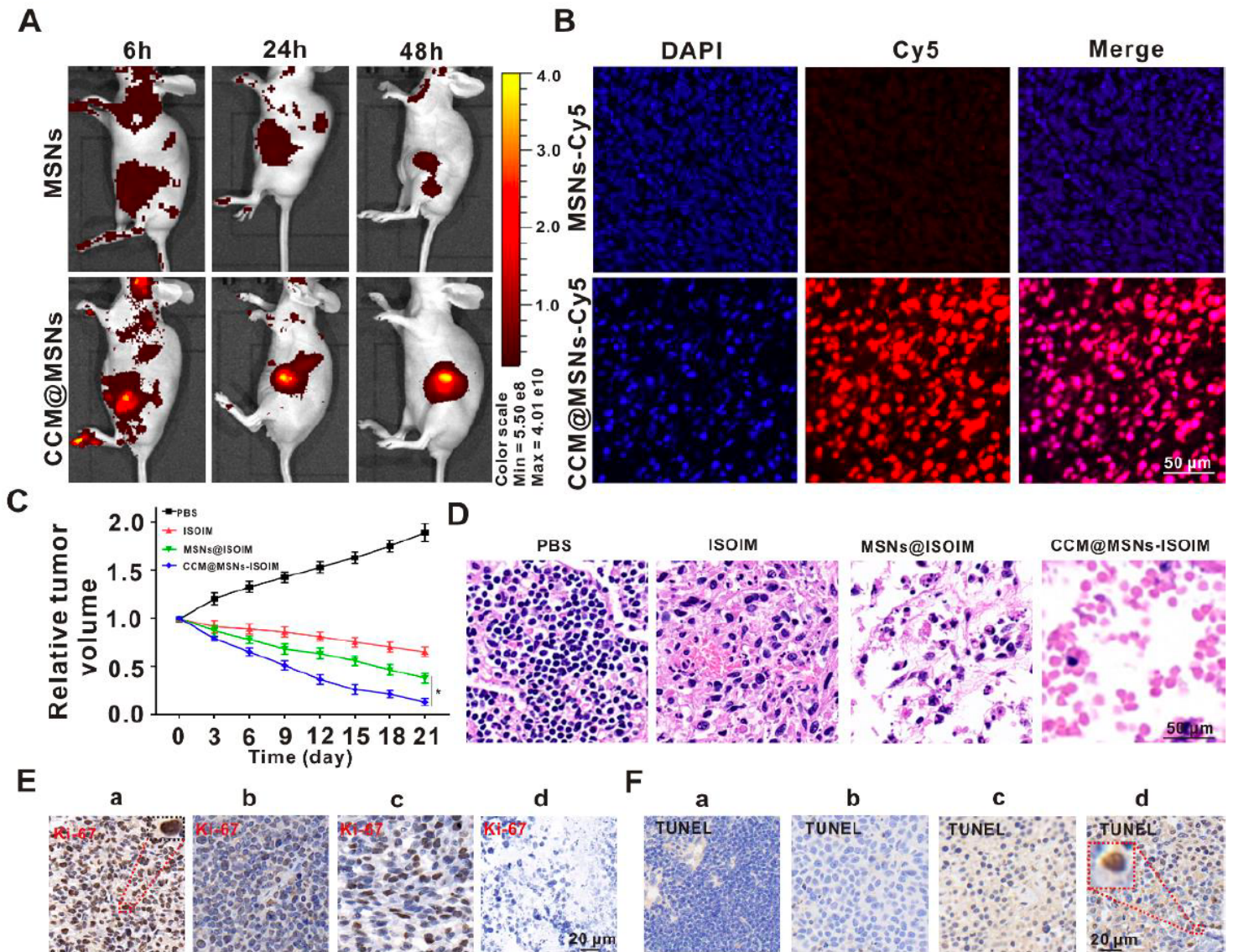


Figure 7

Verification of CCM@MSNs ISOIM targeting and its anti tumor effect in vivo. (A) The fluorescence images in vivo were observed at 6 h, 24 h and 48 h after MSNs-Cy5 and CCM@MSNs-Cy5, respectively were injected into the tail vein of OCI-LY10 tumor bearing mice. (B) MSNs-Cy5 and CCM@MSNs-Cy5 were given to the caudal vein respectively, and the fluorescence imaging of the tumor tissue of tumor bearing mice was observed for 48 h. Scale bar: 50 μ m (C) Curve changes of tumor volume in OCI-LY10 tumor bearing mice during treatment. (D) Different treatments were given to the caudal vein, and the H&E staining images of tumor tissues were observed on the 21st day. Scale bar: 50 μ m. (E and F) Ki-67 and TUNEL were detected on the 21st day after a) PBS, b) ISOIM, c) MSNs@ISOIM and d) CCM@MSNs-ISOIM treatment by tail vein respectively Scale bar: 20 μ m Data are presented as the mean \pm SD (n = 3). (* p < 0.05).

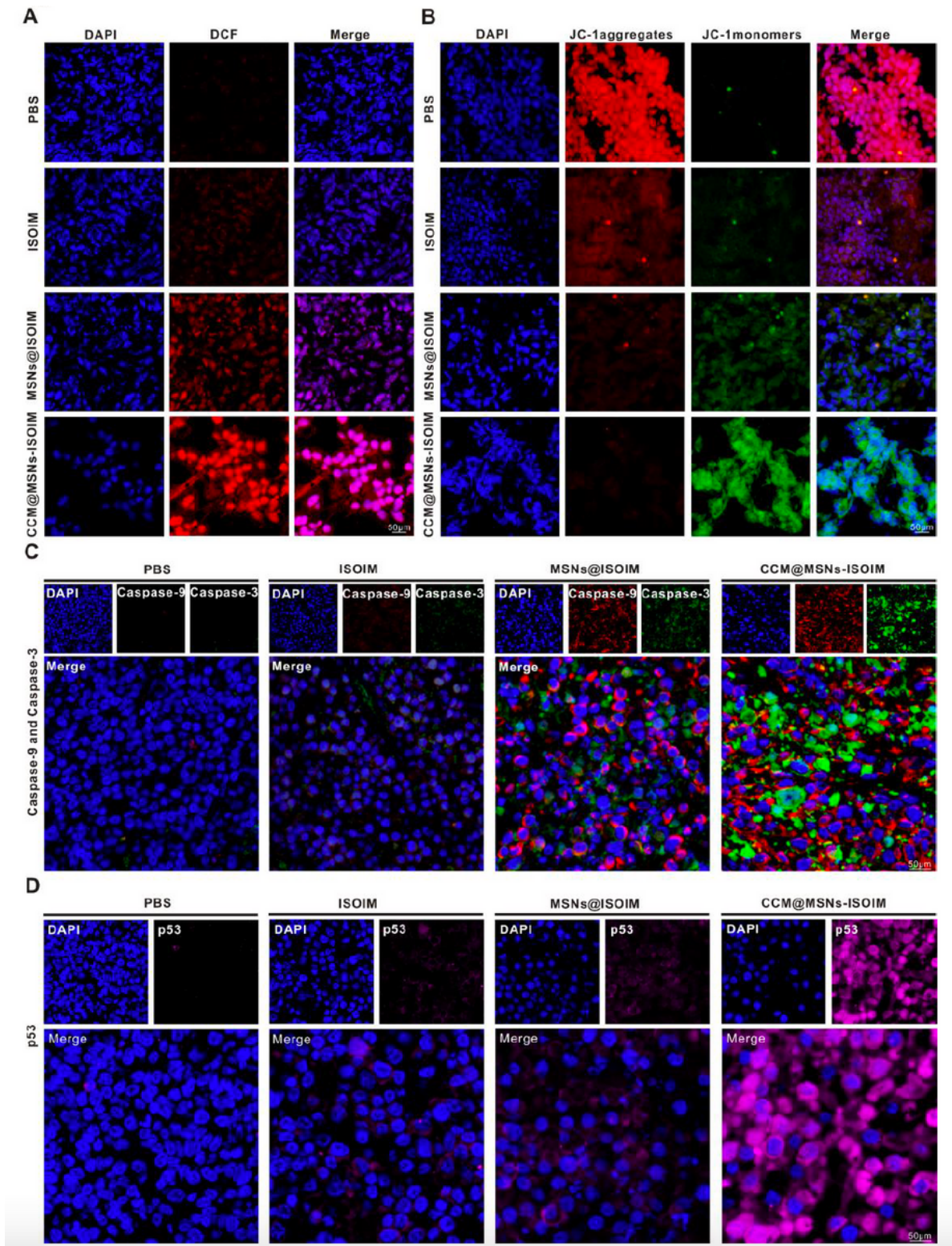


Figure 8

Immunofluorescent staining of tumor tissues (A and B) Different treatments were given, and the tumor tissues were analyzed by ROS and MMP on the 21st day. Scale bar: 50 μm. (C and D) The LCFM images of the tumor area were taken after different treatments. Red: Caspase-9, green: Caspase-3, pink: p53, blue: nucleus Scale bar: 50 μm.

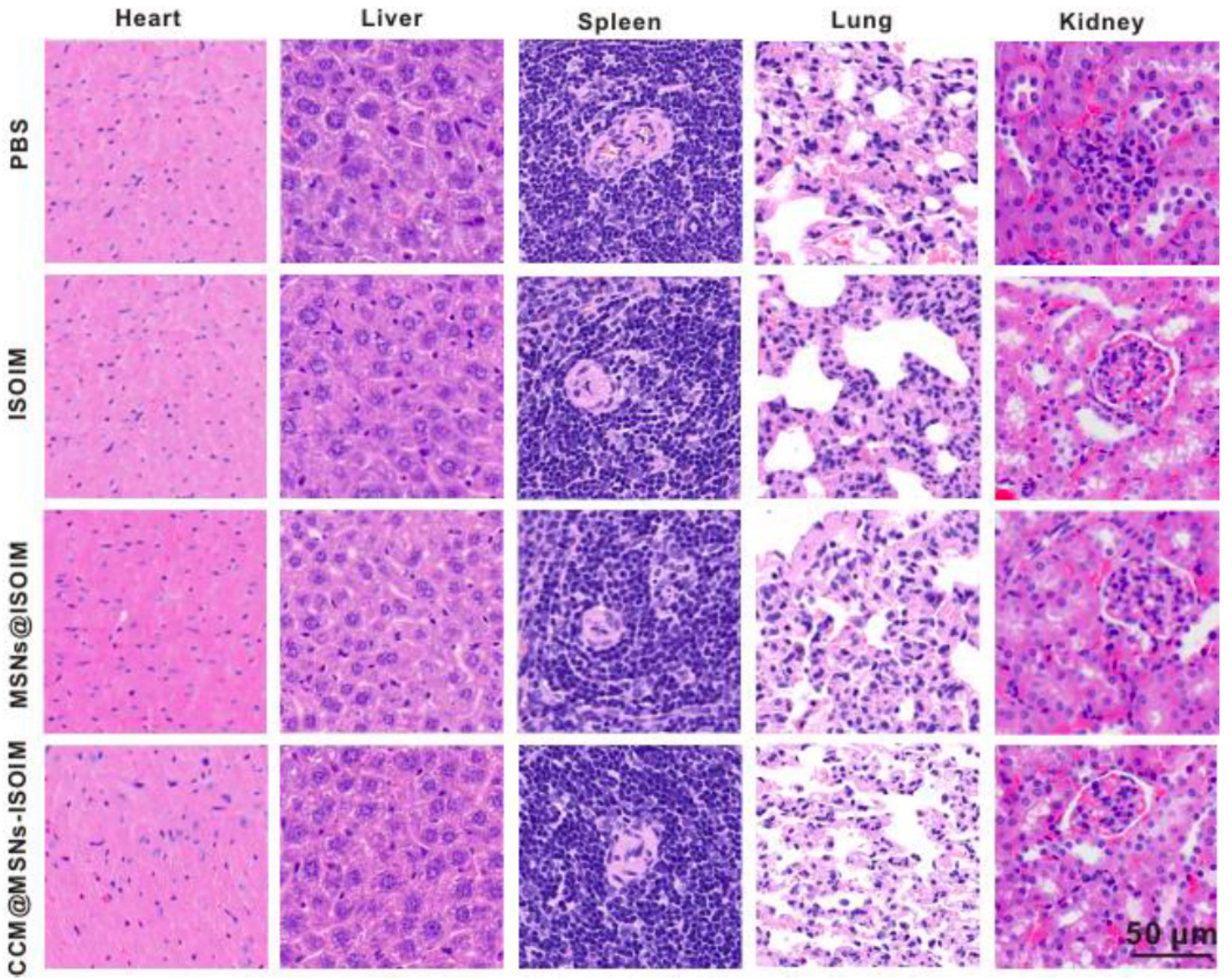
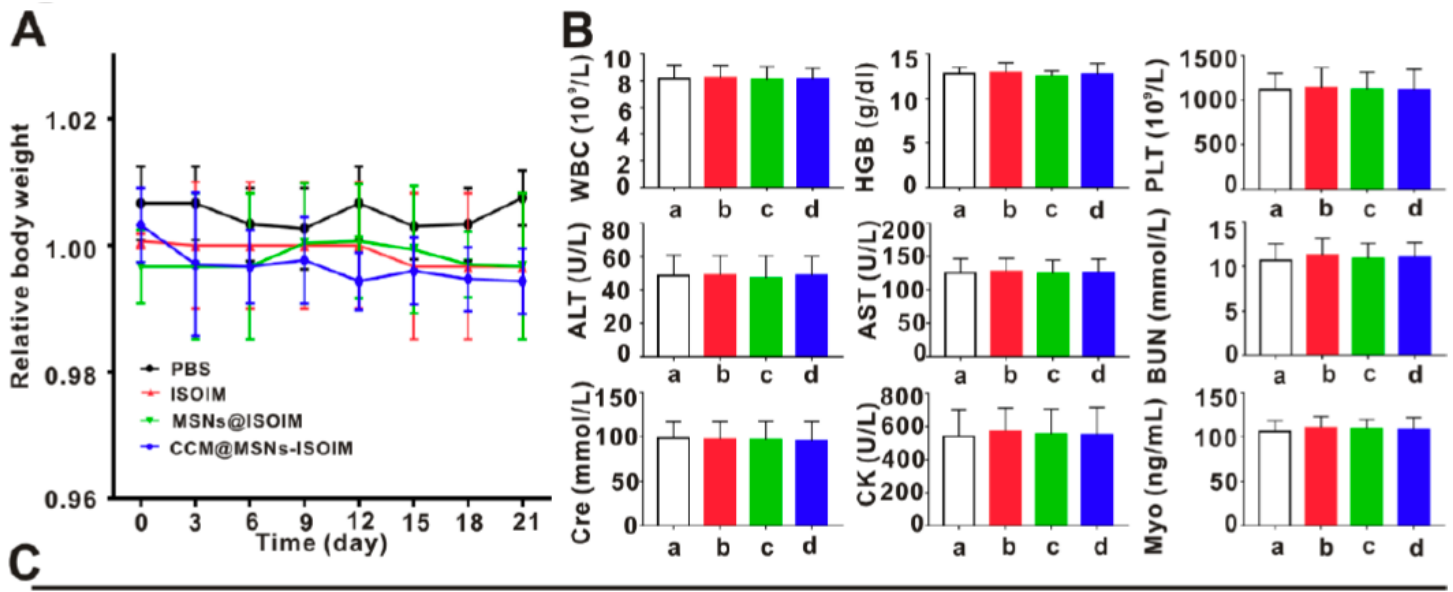


Figure 9

In vivo biological safety study. Nude mice were treated with PBS, ISOIM MSNs@ISOIM and CCM@MSNs-ISOIM for three weeks, and the main organs were stained with H&E. Scale bar: 50 μ m.



	PBS	ISOIM	MSNs@ISOIM	CCM@MSNs-ISOIM
WBC (10 ⁹ /L)	8.16±1.03	8.20±0.96	8.09±1.0	8.11±0.83
HGB (g/dl)	12.83±0.69	12.96±1.06	12.51±0.62	12.78±1.16
PLT (10 ⁹ /L)	1121±184	1137±226	1123±194	1116±230
ALT (U/L)	48.76±12.39	49.13±11.82	47.41±13.50	48.90±11.46
AST (U/L)	125.62±21.43	127.91±19.71	124.85±20.26	126.59±20.01
BUN (mmol/L)	10.70±1.86	11.27±1.92	10.88±1.71	11.02±1.64
Cre (mmol/L)	98.61±18.22	97.16±19.75	96.80±20.47	95.39±21.73
CK (U/L)	538.1±162.8	569.4±140.3	553.6±150.7	549.9±163.6
Myo (ng/mL)	106.3±11.7	110.8±12.3	109.6±10.4	108.2±13.8

Figure 10

Body weight, blood routine and blood biochemical analysis of nude mice . (A) The change curve of body weight of OCI-LY10 tumor bearing mice during treatment. (B) The nude mice were euthanized on the 21st day after PBS, ISOIM, MSNs ISOI M and CCM@MSNs-ISOIM, respectively were injected into the tail vein, and the blood routine indexes (WBC, HGB, and PLT) and blood biochemical indexes (ALT, AST, BUN, Cre, CK and Myo) were detected. (C) A table to summarize all data in (B) by putting the respective numbers Data are presented as mean ± SD (n = 3).