

Age-related decline in the expression of *GDF9* and *BMP15* genes in follicle fluid and granulosa cells derived from poor ovarian responders

Yan Gong (✉ gongyan0619@163.com)

Chengdu Medical College <https://orcid.org/0000-0002-3562-971X>

Jesse Li-Ling

Sichuan University

Dongsheng Xiong

Chengdu Medical College

Jiajing Wei

Chengdu Medical College

Taiqing Zhong

Chengdu Medical College

Hao Tan

Chengdu Medical College

Research

Keywords: GDF9 gene, BMP15 gene, Poor ovarian response, in vitro fertilization, Age

Posted Date: January 5th, 2021

DOI: <https://doi.org/10.21203/rs.3.rs-29352/v3>

License:  This work is licensed under a Creative Commons Attribution 4.0 International License.

[Read Full License](#)

Version of Record: A version of this preprint was published at Journal of Ovarian Research on January 4th, 2021. See the published version at <https://doi.org/10.1186/s13048-020-00757-x>.

Abstract

Background: Growth differentiation factor 9 (*GDF9*) and bone morphogenetic protein 15 (*BMP15*) genes play important roles in folliculogenesis. Altered expression of the two have been found among patients with poor ovarian response (POR). In this prospective cohort study, we have determined the expression of the *GDF9* and *BMP15* genes in follicle fluid (FF) and granulosa cells (GCs) derived from poor ovarian responders grouped by age, and explored its correlation with the outcome of *in vitro* fertilization and embryo transfer (IVF-ET) treatment.

Methods: A total of 196 patients with POR were enrolled from a tertiary teaching hospital. The patients were diagnosed by the Bologna criteria and sub-divided into group A (< 35 year old), group B (35-40 year old), and group C (> 40 year old). A GnRH antagonist protocol was conducted for all patients, and FF and GCs were collected after oocyte retrieval. Expression of the *GDF9* and *BMP15* genes in the FF and GCs was determined with enzyme-linked immunosorbent assay (ELISA), quantitative real-time polymerase chain reaction (qRT-PCR) and Western blotting.

Results: Compared with group C, groups A and B had significantly more two pronuclei (2PN) oocytes and transplantable embryos, in addition with higher rates of implantation and clinical pregnancy ($P < 0.05$). The expression level of *GDF9* and *BMP15* genes in the FF and GCs differed significantly among the three groups ($P < 0.05$), showing a trend of decline along with age. The ratio of *GDF9/BMP15* mRNA levels were similar among the three groups ($P > 0.05$). The relative levels of *GDF9* and *BMP15* proteins in GCs have correlated with the relative mRNA levels in GCs and protein concentrations in FF ($P < 0.05$).

Conclusions: For poor ovarian responders, in particular those over 40, the expression of *GDF9* and *BMP15* is declined along with increased age and in accompany with poorer oocyte quality and IVF outcome, whilst the ratio of *GDF9/BMP15* mRNA levels remained relatively constant.

Introduction

Poor ovarian response (POR) poses a great challenge for *in vitro* fertilization and embryo transfer (IVF-ET) treatment. Patients with POR have fewer retrieved oocytes, fewer transferable embryos, lower pregnancy rates, and greater odds for cycle cancellation and miscarriage [1]. With a prevalence of 9% ~ 24% in various IVF centers[2], POR affects approximately 11.9% of Chinese women undergoing IVF-ET treatment[3]. Although various stimulation protocols and strategies have been proposed, patients withPOR still benefited little from such treatment [4].

According to the Bologna criteria, POR is diagnosed with at least two of the following three criteria: advanced maternal age or any other risk factor for POR; previous history of POR; and an abnormal ovarian reserve test[5]. Although above criteria are useful for predicting ovarian response and counseling purpose, it has grouped together women with various etiologies and clinical characteristics [6]. Some have reported that, compared with elder patients, younger poor ovarian responders (< 40, especially < 35

year old) have higher embryo quality and pregnancy rate but lower miscarriage rate [7-9]. Age has therefore been proposed as an independent predictor for POR [7,8]. Studies have shown that elder poor responders, in particular those over 40, have significantly lower cumulative live birth rate (CLBR) compared with young poor responders (< 35) [10-12]. Therefore, 35 and 40 years old have been used as the thresholds by the Poseidon Criteria and Bologna Criteria, respectively [5,6]. For elder poor responders, age-related infertility and decreased ovarian reserve (DOR) are the main obstacles, whereas for younger poor responders, ovarian aging seems to be independent of age. The heterogeneous prognosis may be attributable to various etiology of the patients.

Risk factors for POR include fecundity decline with age, ovarian cystectomy, chronic smoking, genetic factors, previous chemotherapy and/or radiotherapy, etc.[13]. The pathophysiology of POR is complex and may involve declined endocrine feedback of ovarian factors [14-16]. Oocyte-secreted factors (OSFs) can regulate follicle development [17]. The transforming growth factor β (TGF β) superfamily is one of the most important OSFs which control the function of granulosa cells (GCs). The latter in turn can nourish the oocyte [18]. Growth differentiation factor 9 (*GDF9*) and bone morphogenetic protein 15 (*BMP15*, also known as *GDF9B*) are essential members of the TGF- β superfamily which can enhance the proliferation and metabolism of the GCs and stimulate the expression of kit ligand (KL) in GCs. The GCs can then provide nutrients, steroid hormones and growth factors which can enable oocyte maturation via an intimate cross-talk [15,17]. Cumulus expansion is a complex process which is critical for oocyte maturation and ovulation [19]. The process is highly dependent on the interactions of two signals released by epidermal growth factor (EGF)-like peptides and OSFs [20]. Previous studies have shown that genetic variants and abnormal expression of *GDF9* and *BMP15* may predispose to follicle atresia and early exhaustion of ovarian reserve [15,16]. Altered expression of the two have been found in patients with premature ovarian insufficiency (POI), DOR and infertility [14-16,21]. Moreover, for patients undergoing IVF-ET treatment, *GDF9* and *BMP15* in follicular fluid (FF) and GCs have been associated with poorer oocyte quality and outcome of treatment[22], hence were proposed as biomarkers for the potential of oocyte development [22,23].

Considering the important roles of *GDF9* and *BMP15* in folliculogenesis, this prospective study was designed to analyze the expression of *GDF9* and *BMP15* in the FF and GCs from patients with POR from more homogeneous age groups. Identification of the underlying mechanism may facilitate design of individualized treatment protocols for subgroups of patients with POR.

Methods

Population

This study was registered with the Chinese Clinical Trial Registry Center (Registration No. ChiCTR1800016107) and approved by the Medical Ethics Committee of Sichuan Provincial Women's and Children's Hospital. All patients had given written informed consent. The study also conformed to the Declaration of Helsinki for Medical Research involving Human Subjects (2013 revision).

Ethnic Han Chinese patients diagnosed with POR by the Bologna criteria [1] were enrolled from May 2018 to October 2019 and divided into three groups: group A (< 35 year old), group B (35-40 year old), and group C (> 40 year old). All patients underwent IVF-ET treatment. Patients were excluded from the study should they meet any of the following criteria: (1) Congenital uterine malformation, endometriosis, polycystic ovarian syndrome, intrauterine adhesion, single ovary; (2) Systemic lupus erythematosus and/or sicca syndrome; (3) Uncontrolled endocrinopathy such as diabetes, hyper/hypothyroidism, and hyperprolactinemia; (4) Abnormal chromosomal karyotype; (5) Controlled ovarian stimulation (COS) in the past three months; and (6) Intracytoplasmic sperm injection (ICSI) cycle due to male factor infertility. Medical history was taken for all participants, including regularity of menstrual cycle, duration of infertility and pre-treatment protocols. Height and body weight (with shoes and heavy clothing taken off) were measured. Body weight index (BMI) was calculated as weight divided by height squared (kg/m²).

COS and IVF procedures

A GnRH antagonist protocol was conducted for all patients. From day 2 or 3 of the cycle, 187.5 ~ 225 IU/d human recombinant follicle stimulating hormone (rFSH) (Gonal-F, Merck Serono, Germany; Puregon®, Merck Sharp & Dohme, USA) and 75 IU/d human menopausal gonadotrophin (hMG) (menotrophin, Livzon Pharmaceutical Group Inc, Zhuhai, China) were injected. The dosage of rFSH and hMG was adjusted according to the ovarian response. Ganirelix (Merck Sharp & Dohme, USA) was administered should one of the following criteria be met: serum estradiol (E2) > 300 pg/ml, follicle diameter > 14 mm, luteinizing hormone (LH) > 10 IU/L. When the leading follicle reached 18 mm in diameter, 10 000 IU of urinary human chorionic gonadotrophin (uhCG) (Livzon Pharmaceutical Group Inc, Zhuhai, China) was injected to trigger the ovulation. Oocytes were retrieved by trans-vaginal ultrasound guidance within approximately 36 h after the trigger, and follicle flushing was not used.

Oocytes were fertilized by conventional IVF for 4 ~ 6 h. Mature oocyte was defined as being at the metaphase II (M_{II}) stage with the first polar body visible in the cytoplasm. 17 ~ 18 h after the IVF, normal fertilized oocyte was confirmed should it contain two pronuclei (2PN). Cultured embryos were evaluated on day 3 based on the number of blastomeres and degree of fragmentation. Embryos of grade A ~ C on day 3 were defined as transplantable embryos [24]. One or two transplantable embryos were transferred. Luteal phase support was started on the oocyte retrieval day with the injection of 60 mg/d progesterone oil (Zhejiang Xianju Pharmaceutical Co., Ltd. Taizhou, China) or vaginal progesterone (Crinone 8% gel, Merck, Germany). The reasons for canceled cycles included follicular growth failure (10 days after COS, leading follicle diameter < 10mm), failed oocyte retrieval at the time of follicle aspiration, no transplantable embryos (no mature oocyte, abnormal fertilization or cleavage), and accumulation of embryos and progesterone > 2.5 ng/ml on the trigger day. Clinical pregnancy was defined as detection of embryonic heartbeat. The rates of implantation, clinical pregnancy, multiple pregnancy, and miscarriage were calculated [8].

Measurement of basal endocrine parameters in serum

Endocrine parameters including E2, progesterone (P), total testosterone (TT), prolactin (PRL), FSH and LH were measured with an electrochemiluminescence immunoassay platform (Roche Diagnostics GmbH, Mannheim, Germany). Anti-Müllerian hormone (AMH) was measured with an enzyme-linked immunosorbent assay kit (Guangzhou Kangrun Biotech, Co., Ltd, Guangdong, China). Intra- and inter-assay coefficients for the above variables were set as < 5% and 10%, respectively.

Collection of FF and GCs

FF samples were carefully collected from follicles with a diameter of ≥ 18 mm, and centrifuged immediately at $700\times g$ for 5 min. The supernatant was stored at -80°C . GCs were obtained by follicular aspiration and isolated from blood cells and cellular debris with a lymphocyte separation medium (Beijing Solarbio Science and Technology Corporation, Beijing, China) by centrifugation at $700\times g$ for 10 min. Residual red blood cells were removed with a red blood cell lysis buffer (Solarbio Science and Technology Corporation, Beijing, China). The GCs were stored at -80°C until the time of use. For each patient, the FF and GCs were collected from all follicles and pooled as one sample.

Determination of GDF9 and BMP15 in FF by ELISA

The concentrations of GDF9 and BMP15 in FF were measured with a commercial enzyme-linked immunosorbent assay kit (Elabscience Biotechnology Co., Ltd., Wuhan, China) by following the manufacturer's instructions. The standard product in GDF9 assay kit was human GDF9 recombinant protein expressed in *E. coli*, and the sequence was Gly320-Arg454. The kit has been crossed experimented with human GDF-2, GDF-7, GDF-10, GDF-11, GDF-15 and BMP-15, with the crossover rates being 0.74%, 0.61%, 0.78%, 0.65%, 0.72% and 0.41%, respectively. The standard product of the BMP15 assay kit was human BMP15 recombinant protein expressed in *E. coli*, and the sequence was Gln268-Arg392. The kit has been crossed experimented with human BMP-1, BMP-2, BMP-4, BMP-6, BMP-7 and GDF9, with the crossover rates being 0.53%, 0.92%, 0.79%, 0.56%, 0.74% and 0.38%, respectively. The standard use of the two kits was to make serial dilutions, i.e., 1000, 500, 250, 125, 62.5, 31.25, 15.63, 0 pg/ml, of a working solution of 1000 pg/ml before the measurement. The FF samples were thawed and mixed together, and 100 μl FF was added to each well in duplicate. The absorbance value was measured at 450 nm with a Perlong DNM-9602G microplate spectrophotometer (Perlong New Technology Co., Ltd., Beijing, China). The sensitivity of the assay was set as 9.38 pg/ml. The detection range of GDF9 and BMP15 was set as 15.36 ~ 1000 pg/ml. The concentration of GDF in some FF samples were above the range. Such samples were diluted 2 times, and 100 μl diluted FF was then added to each well. The final concentration was calculated by multiplying the detection value with the dilution factor.

Determination of mRNA expression in GCs by quantitative real-time polymerase chain reaction (qRT-PCR)

Total RNA was isolated from GCs with a RNAprep Pure Micro Kit (Tiangen Biotech Co., Ltd., Beijing, China). The purity and concentration of RNA were determined with Nanodrop-2000 (Thermo Fisher Scientific, Waltham, Massachusetts, USA) under the absorbance of 260 nm/280 nm. The RNA was

reversely transcribed into cDNA using a PrimeScript™ RT Reagent Kit with gDNA Eraser (TaKaRa, Tokyo, Japan). The cDNA was then amplified using TB Green™ Premix Ex Taq™ (TaKaRa, Tokyo, Japan) by qRT-PCR in triplicate. The PCR conditions were 95°C for 30 s, followed by 40 cycles of 95°C for 10 s, 60°C for 30 s, and 65°C for 5 s. Formation of a single product was verified with a melting curve method. *GAPDH*, *β-actin* and *HPRT* were used as internal controls. The mRNA levels of the target genes were calculated with the $2^{-\Delta CT}$ method and expressed as fold change relative to the geometric means of the three internal controls. All PCR reactions were conducted in triplicate. Primers used in the qRT-PCR are shown in Table 1.

Table 1 Sequences of primers used in qRT-PCR

Gene	Primer (5'→3')	Annealing temperature (°C)	Efficiency
<i>GDF9</i>	F: TGGAGCATCCTTCAGCAC	57.2	98.8%
	R: GCAGCCTCTTCTCCCACA		
<i>BMP15</i>	F: TTTACCGCCATCATCTCCAA	53.4	91.9%
	R: TTTCCAAGCGTTAGACATCA		
<i>GAPDH</i>	F: ACGGATTTGGTCGTATTGGG	57.4	101.6%
	R: CGCTCCTGGAAGATGGTGAT		
<i>β-actin</i>	F: GACAGGATGCAGAAGGAGAT	53.5	99.6%
	R: CTGCTTGCTGATCCACATCT		
<i>HPRT</i>	F: CCATTCCTATGACTGTAGAT	51.8	96.5%
	R: CCAGTTAAAGTTGAGAGATCAT		

Determination of GDF9 and BMP15 in GCs by Western blotting

GCs were lysed in RIPA lysis buffer (KeyGen Biotech Co., Ltd., Nanjing, China) containing the Halt™ Protease Inhibitor Cocktail (Invitrogen, Karlsruhe, Germany). ABCA protein quantitative kit (Pierce, Thermo Fisher Scientific, Rockford, IL, USA) was used for determining the protein concentration. The total proteins (60 µg/lane) were subjected to 10% SDS-PAGE and transferred onto a polyvinylidene fluoride (PVDF) membrane (EMD Millipore, Billerica, MA, USA). The membrane was then blocked in TBST (Tris-buffered saline with Tween-20) containing 5% BSA (Bio-Rad, Hercules, CA, USA) at room temperature for 1 h, and incubated with primary antibody overnight at 4°C. The primary antibodies used in this study have included GDF9 (1:500, Beyotime Biotechnology Co., Ltd., Shanghai, China), BMP15 (1:500, Beyotime Biotechnology Co., Ltd.), and GAPDH (1:2000, Bioss, Beijing, China). After washed with TBST for three times, the membranes were incubated with secondary antibodies for 2 h at room temperature. The protein was then detected with a SuperSignal® West Pico Trial Kit (Thermo

Scientific Pierce, IL, USA). Band intensity was measured with a Gel Doc XR densitometer (Bio-Rad, Hercules, CA, USA) and normalized with that of the internal control.

Statistical analysis

Data were analyzed with SPSS 17.0 software (SPSS Inc., Chicago IL, USA). Continuous variables were expressed as mean \pm standard deviation (SD). The Kolmogorov-Smirnov test was used to assess the normality of data distribution. Continuous variables with normal distribution were compared using one-way ANOVA with *post hoc* Bonferroni test. Categorical data were compared using Chi-squared test. Pearson's correlation was used to assess the correlation between the relative mRNA levels in GCs and protein concentrations in FF. Significance level was set as < 0.05 , and two-tailed test was used for all hypothesis tests. Linear regression equation was established for the expression levels of GDF9 against BMP15 mRNA in each sample.

Results

Baseline characteristics of the patients

Baseline characteristics of the patient are shown in Table 2. The average ages of the three groups have differed significantly ($P < 0.05$). Compared with group A, the duration of infertility was significantly longer in group C ($P < 0.05$). The abnormal menstrual cycle rate, BMI, AFC, AMH and basal hormone levels did not significantly differ among the three groups ($P > 0.05$).

Table 2 Baseline characteristics of the patients

	group A (n = 63)	Group B (n = 65)	Group C (n = 68)
Age (years) abc	30.65 \pm 2.57	37.37 \pm 1.53	42.59 \pm 1.70
Abnormal menstrual cycle	34.92% (22/63)	36.92% (24/65)	35.29% (24/68)
Duration of infertility (years)b	3.32 \pm 2.21	4.03 \pm 3.05	4.68 \pm 3.00
BMI (kg/m ²)	22.08 \pm 2.62	22.21 \pm 2.00	22.44 \pm 2.62
AFC	4.05 \pm 1.43	3.91 \pm 1.69	3.94 \pm 1.68
FSH/LH ratio	2.68 \pm 1.29	2.76 \pm 1.71	2.99 \pm 1.21
E2 (pg/ml)	76.12 \pm 34.71	77.49 \pm 52.67	85.08 \pm 50.88
P (ng/ml)	0.77 \pm 0.35	0.78 \pm 0.33	0.84 \pm 0.52
TT (ng/ml)	0.37 \pm 0.15	0.36 \pm 0.15	0.39 \pm 0.10
AMH (ng/ml)	0.80 \pm 0.39	0.78 \pm 0.24	0.73 \pm 0.39
PRL (ng/ml)	199.84 \pm 39.35	205.58 \pm 58.49	197.26 \pm 59.45

Data are presented as mean \pm SD or percentage (number). **Abbreviations:** *BMI* Body mass index, *AFC* Antral follicle count, *FSH* Follicle stimulating hormone, *LH* Luteinizing hormone, *E2* Estradiol, *P* Progesterone, *TT* Total testosterone, *AMH* Anti-Müllerian hormone, *PRL* Prolactin. The rate of abnormal menstrual cycle was compared with Chi-square test. $P < 0.05$ was considered as statistically significant.

a $P < 0.05$, group A vs. group B

b $P < 0.05$, group A vs. group C

c $P < 0.05$, group B vs. group C

Decline of oocyte quality and IVF outcome with increased age

In total thirty-one cycles were canceled. The main reasons included follicular growth failure (10 cycles), failed oocyte retrieval at the time of follicle aspiration (6 cycles), no transplantable embryos (5 cycles), accumulation of embryos (5 cycles), and progesterone > 2.5 ng/ml on the trigger day (5 cycles). Compared with group C, groups A and B had significantly more 2PN oocytes, transplantable embryos, and higher rates of implantation and clinical pregnancy ($P < 0.05$). The dosage of rFSH, duration of COS, endometrial thickness and E2 levels on the trigger day, the number of retrieved oocytes, M \ddot{u} oocytes and embryos per ET, and the rates of miscarriage and multiple pregnancy did not significantly differ among the three groups ($P > 0.05$) (Table 3).

Table 3 COS, IVF outcomes and biochemical markers in FF

	group A (n = 63)	Group B (n = 65)	Group C (n = 68)
COS			
Dosage of rFSH (IU)	2476.31 ± 379.34	2556.69 ± 419.57	2586.90 ± 587.63
Duration of COS (d)	9.89 ± 2.85	9.68 ± 2.22	9.33 ± 2.34
E2 on trigger day (pg/mL)	756.95 ± 191.65	740.23 ± 180.47	721.03 ± 151.62
Endometrial thickness (mm)	9.10 ± 1.89	8.95 ± 1.91	8.81 ± 1.61
Number of oocytes retrieved	2.98 ± 0.67	2.82 ± 0.87	2.68 ± 0.90
Number ofM	2.54 ± 0.94	2.43 ± 0.79	2.37 ± 0.74
Number of 2PNab	2.08 ± 0.93	1.87 ± 0.87	1.36 ± 0.58
Number of transplantable embryosab	2.02 ± 0.57	1.85 ± 0.71	1.22 ± 0.49
Cancel cycle rate (%)	11.11 % (7/63)	12.31% (8/65)	23.53% (16/68)
ET			
Number of embryos per ET	1.43 ± 0.50	1.44 ± 0.50	1.33 ± 0.47
Implantation rate (%) ab	30.00% (24/80)	24.39% (20/82)	10.14% (7/69)
Clinical pregnancy rate (%) ab	37.50% (21/56)	29.82% (17/57)	11.54% (6/52)
Miscarriage rate (%)	9.52% (2/21)	23.53% (4/17)	33.33% (2/6)
Multiple pregnancy rate (%)	14.29% (3/21)	17.65% (3/17)	16.67% (1/6)
In FF			
<i>GDF9</i> (pg/ml) abc	1020 ± 117	904 ± 70	671 ± 53
<i>BMP15</i> (pg/ml) abc	666 ± 40	643 ± 46	420 ± 40

Data are presented as mean ± SD or percentage (number). **Abbreviations:** COS Controlled ovarian stimulation, E2Estradiol, ET Embryos transferred, FF Follicle fluid, *GDF9* Growth differentiation factor 9, *BMP15* Bone morphogenetic protein-15. Chi-squared test was used to compare the rates of maturation, fertilization, cleaved embryo, higher quality embryo, cancel cycle, implantation, clinical pregnancy, miscarriage and multiple pregnancy between the two groups. $P < 0.05$ was considered as statistically significant.

a $P < 0.05$, group A vs. group C

b $P < 0.05$, group B vs. group C

c $P < 0.05$, group A vs. group B

Decreased expression of GDF9 and BMP15 in FF with increased age

As shown in Table 3, the concentration of GDF9 (1012 ± 117 pg/ml vs. 904 ± 70 pg/ml vs. 671 ± 53 pg/ml) and BMP15 (666 ± 40 pg/ml vs. 643 ± 46 pg/ml vs. 420 ± 40 pg/ml) in FF have differed significantly between the three groups ($P < 0.05$), with an obvious trend of decline with increased age.

Decreased expression of GDF9 and BMP15 in GCs with increased age

Only GCs in FF with oocyte were detected for mRNA and protein. Therefore, there were 61, 60 and 59 samples from group A, group B and group C, respectively. The CT values of housekeeping genes did not differ significantly among the three groups ($P > 0.05$). As shown in Figures 1A and 1B, the expression of *GDF9* and *BMP15* in GCs, at the levels of both mRNA and protein, have differed significantly between the three groups ($P < 0.05$). Both showed a trend of decline with increased age. As shown in Figure 1C, the single band at 51 kDa represented *GDF9*, while the single band at 45 kDa represented *BMP15*.

As shown in Table 4, the relative protein levels in GCs was positively correlated with the relative mRNA levels in GCs and protein concentrations in FF by Pearson's correlation analysis ($P < 0.05$).

Table 4 Correlation between the proteins and mRNA levels

relative protein levels in GCs	relative mRNA levels in GCs		protein concentration in FF	
	<i>r</i>	<i>P</i>	<i>r</i>	<i>P</i>
GDF9	0.704	< 0.001	0.501	0.001
BMP15	0.737	< 0.001	0.701	< 0.001

The ratio of GDF9/BMP15 mRNA levels

The ratio of GDF9/BMP15 mRNA levels of the three groups were compared using one-way ANOVA. The ratio of GDF9/BMP15 mRNA levels for groups A, B and C were 1.23 (1.00-1.35), 1.23 (1.08-1.38), and 1.20 (1.09-1.33), respectively. No significant difference was detected between the groups ($P > 0.05$). Linear regression equation for the mRNA levels of GDF9 against BMP15 in each sample was established as $y = 1.097x + 0.047$.

Discussion

We have proven through this study that the oocyte quality and IVF outcome will decrease with increased age among patients with POR, in particular those over 40, which also correlated with decline of *GDF9* and *BMP15* expression in FF and GCs. The ratio of GDF9/BMP15 mRNA levels has remained to be relatively constant, and the protein and mRNA levels were positively correlated in both FF and GCs.

Although the quantity of oocytes was poor in all groups in this study, the numbers of normal fertilized oocytes and transplantable embryos have decreased steeply to 1.36 and 1.22 in poor responders over 40,

respectively. And the oocyte quality is one of the most critical factors for pregnancy. Similar to previous reports, the rates of implantation and clinical pregnancy in elder patients (> 40) have decreased to 10.14% and 11.54%, respectively [7,8]. This seems to have reflected the poor quantity and quality of the oocytes from elder poor responders whom may benefit less from IVF treatment. For poor responders between 35 and 40, the rates of implantation and clinical pregnancy were 24.39% and 29.82%, respectively. Both were lower than those of under 35, albeit with no statistical significance. Researchers have previously proposed that 35-37 year of age to be the threshold for decreased rate of euploidy embryos and live births [25]. Such patients should therefore consider IVF treatment earlier. Meanwhile, younger poor responders (< 35) still have reasonable number of transplantable embryos (2.02 ± 0.57) and pregnancy rate (37.50%), and should be actively treated. Of note, the miscarriage rate may also rise with increased age [8]. The underlying mechanisms for age-related decline of oocyte quality and IVF outcome are variable, including chromosomal aberration in oocytes and embryos due to advanced maternal age [26-28]. The autocrine function of oocytes in POR is also important but not yet fully understood.

GDF9 and BMP15 secreted by the oocyte play an important role in the cross-talk between cumulus GCs and the oocytes [22]. The functions of GDF9 and BMP15 in follicular development include suppressing GCs apoptosis and promoting cell proliferation [29], enhancing the effect of FSH and insulin-like growth factor-I (IGF- I) on GCs, then providing more E2 and glycolysis for oocyte [30,31]. GDF9 and BMP15 can also prevent premature luteinization and promote normal expansion of cumulus cells till the LH surge [32,33]. In turn, GCs are necessary to nourish the oocytes and promote their maturation [17,34]. Therefore, altered expression and/or function of GDF9 and BMP15 may result in abnormal folliculogenesis and poor oocyte quality.

Declined expression of the *GDF9* and *BMP15* genes has previously been discovered among patients with DOR [21,35]. In this study, we further proved that such decline is associated with increased age, particularly for those over 40. FF and GCs form the microenvironment of the oocytes, and certain components of them may reflect the metabolism and endocrine status of the oocyte[34,36]. In this study, we found that the relative protein levels in GCs have correlated with the relative mRNA levels in GCs and protein concentration in FF. This has reflected the similar changes of the two proteins in FF and GCs, both of which can reflect the status of oocyte. Furthermore, the decline of *GDF9* and *BMP15* expression was accompanied with poor oocyte quality and IVF outcome in elder patients. Compared with group A (< 35), group B (35-40) had significantly lower expression. Their oocyte quality and IVF outcome were also poorer albeit with no statistical significance.

Hence, *GDF9* and *BMP15* may provide more sensitive and earlier biomarkers for the fertility of poor ovarian responders. Declined expression of the two may, at least in part, account for the age-related poor oocyte quality in poor responders. Physiologically, *GDF9* and *BMP15* can promote the expansion of cumulus GCs till the LH surge [32,33]. For elder poor responders, the steep decline in *GDF9* and *BMP15* expression may affect the response of GCs to LH surge. For such patients, exogenous LH in conjunct with rFSH may compensate the insufficient function of LH and improve the outcome of IVF-ET treatment [37].

Of note, the ratio of GDF9/BMP15 mRNA levels in GCs has remained relatively constant among the three groups, and therefore may not be associated with the onset of early DOR. Crawford et al [38] also found the ratio of GDF9/BMP15 mRNA to be strongly reserved in each species but differed markedly between species. Oocyte derived from poly-ovulatory species exhibited higher GDF9/BMP15 ratios, e.g., mouse (5.19) and rat (3.65), compared with species with low ovulation rates, e.g., sheep (1.26), cow (0.24) and deer (0.10) [38]. In the present study, the ratio of human GCs (1.20-1.23) was similar to that of low ovulatory species such as sheep (1.26). GDF9 and BMP15 work synergistically to influence the proliferation of GCs, and GCs of each species might have evolved to respond to unique GDF9/BMP15 ratios [39]. Nevertheless, Crawford et al. found the ratio in pig oocytes (poly-ovulatory species) to be also low (0.51) [38]. Therefore, the ratio of GDF9/BMP15 may not be the only factor which can influence the ovulation rate. The underlying mechanism of the GDF9/BMP15 ratio and ovulation rate demands further research.

The limitation of this study lies in its relatively small sample size and lack of live birth rate due to the limited study period. Moreover, as the main purpose of this study was to evaluate *GDF9* and *BMP15* expression in female age groups, we have excluded ICSI cycles due to male factors. The latter, in particular advanced paternal age, may also affect the embryo quality and outcome of IVF-ET treatment.

Conclusions

In summary, we have discovered an age-related decline in *GDF9* and *BMP15* expression among patients with POR, which may in part account for the age-related poor oocyte quality and IVF outcome. Identification of the heterogeneity may facilitate design of individualized protocols to attain better treatment outcome and avoid repeated cycles. Larger cohort studies are required to validate the results of this study. Researchers have recently suggested that exogenous recombinant *GDF9* and/or *BMP15* can enhance blastocyst formation during IVF treatment [40,41]. Should such strategy be adapted for poor ovarian responders, dosages dependent on age and basal levels of *GDF9* and *BMP15* expression may be considered.

Declarations

Acknowledgement

We thank our colleagues at the Reproductive Medicine Center of Sichuan Provincial Women's and Children's Hospital for their assistance in sample collection. We thank Xiangyu Li and ShiQi Chen for their assistance in data analysis. We greatly appreciate all patients for their participation in this study.

Author's contributions

Yan Gong designed the study and wrote the manuscript. Jesse Li-Ling contributed to revise the article. Hao Tan designed the experiments. Taiqing Zhong performed the experiments. Jiajing Wei and Dongsheng Xiong participated in sample collection. All authors have read and approved the final manuscript.

Funding

This study was sponsored by the Scientific Research Program of Sichuan Medical Association (No. S17060), the Technology Innovation Program of the Science and Technology Bureau of Chengdu (No. 2018-YF05-00247-SN), the Scientific Research Project of Sichuan Provincial Health Commission (No. 20PJ123), Science and Technology Innovation Fund of Sichuan Provincial Hospital for Women and Children (No. 20180205) and the Innovation and Entrepreneurship Training Program for College Students of China (No. 508-2043140).

Availability of data and materials

The datasets used and/or analyzed during the current study are available from the corresponding author on reasonable request.

Ethics approval and consent to participate

Ethics approval was obtained from the Medical Ethics Committee of Sichuan Provincial Women's and Children's Hospital.

Consent for publication

Not applicable.

Competing interests

All authors have declared that they have no competing interests.

Abbreviations

GDF9: Growth differentiation factor 9; BMP15: Bone morphogenetic protein 15; POR: Poor ovarian response; FF: Follicle fluid; GCs: Granulosa cells; IVF-ET: In vitro fertilization and embryo transfer; ELISA: Enzyme-linked immunosorbent assay; qRT-PCR: Quantitative real-time polymerase chain reaction; AFC: Antral follicle count; CLBR: Cumulative live birth rate; DOR: Decreased ovarian reserve; OSFs: Oocyte-secreted factors; TGF β : Transforming growth factor β ; POI: Premature ovarian insufficiency; COS: Controlled ovarian stimulation; ICSI: Intracytoplasmic sperm injection; FSH: Follicle stimulating hormone; hMG: human menopausal gonadotrophin; uHCG: urinary human chorionic gonadotrophin; 2PN: Two pronuclei; E2: Estradiol; P: Progesterone; TT: Total testosterone; PRL: Prolactin

References

1. Ferraretti AP, La Marca A, Fauser BC, Tarlatzis B, Nargund G, Gianaroli L, et al.ESHRE consensus on the definition of 'poor response' to ovarian stimulation for in vitro fertilization: the Bologna criteria. *Hum Reprod.* 2011; 26:1616-24.
2. Kolibianakis EM, Venetis CA, Diedrich K, Tarlatzis BC, Griesinger G.Addition of growth hormone to gonadotrophins in ovarian stimulation of poor responders treated by in-vitro fertilization: a systematic review and meta-analysis. *Hum Reprod Update.*2009; 15:613-22.
3. Zhen XM, Qiao J, Li R, Wang LN, Liu P.The clinical analysis of poor ovarian response in in-vitro-fertilization embryo-transfer among Chinese couples. *J Assist Reprod Genet.*2008; 25:17-22.
4. Jevic YB, Bhandari HM.Effective treatment protocol for poor ovarian response: A systematic review and meta-analysis. *J Hum Reprod Sci.*2016; 9:70-81.
5. Papathanasiou A.Implementing the ESHRE 'poor responder' criteria in research studies: methodological implications. *Hum Reprod.*2014; 29:1835-8.
6. Poseidon G, Alviggi C, Andersen CY, Buehler K, Conforti A, De Placido G, et al. A new more detailed stratification of low responders to ovarian stimulation: from a poor ovarian response to a low prognosis concept. *Fertil Steril.*2016;105:1452-3.
7. Oudendijk JF, Yarde F, Eijkemans MJ, Broekmans FJ, Broer SL.The poor responder in IVF: is the prognosis always poor?: a systematic review. *Hum Reprod Update.*2012; 18:1-11.
8. Gonzalez-Foruria I, Penarrubia J, Borrás A, Manau D, Casals G, Peralta S, et al. Age, independent from ovarian reserve status, is the main prognostic factor in natural cycle in vitro fertilization. *Fertil Steril.*2016;106:342-7.
9. Younis JS, Ben-Ami M, Ben-Shlomo I.The Bologna criteria for poor ovarian response: a contemporary critical appraisal. *J Ovarian Res.*2015; 8:76.
10. Yang Y, Sun X, Cui L, Sheng Y, Tang R, Wei D,et al.Younger poor ovarian response women achieved better pregnancy results in the first three IVF cycles. *Reprod Biomed Online.* 2016; 32:532-7.
11. Yakin K, Oktem O, Balaban B, Urman B.Bologna criteria are predictive for ovarian response and live birth in subsequent ovarian stimulation cycles. *Arch Gynecol Obstet.*2019; 299:571-7.
12. Xu B, Chen Y, Geerts D, Yue J, Li Z, Zhu G,et al.Cumulative live birth rates in more than 3,000 patients with poor ovarian response: a 15-year survey of final in vitro fertilization outcome. *Fertil Steril.* 2018; 109:1051-9.
13. Kyrou D, Kolibianakis EM, Venetis CA, Papanikolaou EG, Bontis J, Tarlatzis BC.How to improve the probability of pregnancy in poor responders undergoing in vitro fertilization: a systematic review and meta-analysis. *Fertil Steril.*2009; 91:749-66.
14. Laissue P, Christin-Maitre S, Touraine P, Kuttann F, Ritvos O, Aittomaki K, et al. Mutations and sequence variants in GDF9 and BMP15 in patients with premature ovarian failure. *Eur J Endocrinol.*2006;154:739-44.

15. Otsuka F, McTavish KJ, Shimasaki S. Integral role of GDF-9 and BMP-15 in ovarian function. *Mol Reprod Dev.* 2011; 78:9-21.
16. Wang TT, Ke ZH, Song Y, Chen LT, Chen XJ, Feng C, et al. Identification of a mutation in GDF9 as a novel cause of diminished ovarian reserve in young women. *Hum Reprod.* 2013, 28:2473-81.
17. Chang HM, Qiao J, Leung PC. Oocyte-somatic cell interactions in the human ovary-novel role of bone morphogenetic proteins and growth differentiation factors. *Hum Reprod Update.* 2016; 23:1-18.
18. Juengel JL, McNatty KP. The role of proteins of the transforming growth factor-beta superfamily in the intraovarian regulation of follicular development. *Hum Reprod Update.* 2005; 11:143-60.
19. Russell DL, Robker RL. Molecular mechanisms of ovulation: co-ordination through the cumulus complex. *Hum Reprod Update.* 2007; 13:289-312.
20. Fang L, Cheng JC, Chang HM, Sun YP, Leung PC. EGF-like growth factors induce COX-2-derived PGE2 production through ERK1/2 in human granulosa cells. *J Clin Endocrinol Metab.* 2013; 98:4932-41.
21. Wu YT, Wang TT, Chen XJ, Zhu XM, Dong MY, Sheng JZ, et al. Bone morphogenetic protein-15 in follicle fluid combined with age may differentiate between successful and unsuccessful poor ovarian responders. *Reprod Biol Endocrinol.* 2012; 10:116.
22. Li Y, Li RQ, Ou SB, Zhang NF, Ren L, Wei LN, et al. Increased GDF9 and BMP15 mRNA levels in cumulus granulosa cells correlate with oocyte maturation, fertilization, and embryo quality in humans. *Reprod Biol Endocrinol.* 2014; 12:81.
23. Wu YT, Tang L, Cai J, Lu XE, Xu J, Zhu XM, et al. High bone morphogenetic protein-15 level in follicular fluid is associated with high quality oocyte and subsequent embryonic development. *Hum Reprod.* 2007; 22:1526-31.
24. Alpha Scientists in Reproductive M, Embryology ESIGo. The Istanbul consensus workshop on embryo assessment: proceedings of an expert meeting. *Hum Reprod.* 2011; 26:1270-83.
25. Haadsma ML, Groen H, Mooij TM, Burger CW, Broekmans FJ, Lambalk CB, et al. Miscarriage risk for IVF pregnancies in poor responders to ovarian hyperstimulation. *Reprod Biomed Online.* 2010; 20:191-200.
26. Eichenlaub-Ritter U. Oocyte ageing and its cellular basis. *Int J Dev Biol.* 2012; 56:841-52.
27. Shahine LK, Marshall L, Lamb JD, Hickok LR. Higher rates of aneuploidy in blastocysts and higher risk of no embryo transfer in recurrent pregnancy loss patients with diminished ovarian reserve undergoing in vitro fertilization. *Fertil Steril.* 2016, 106:1124-8.
28. Franasiak JM, Forman EJ, Hong KH, Werner MD, Upham KM, Treff NR, et al. The nature of aneuploidy with increasing age of the female partner: a review of 15,169 consecutive trophoctoderm biopsies evaluated with comprehensive chromosomal screening. *Fertil Steril.* 2014, 101:656-63.
29. Hussein TS, Froiland DA, Amato F, Thompson JG, Gilchrist RB. Oocytes prevent cumulus cell apoptosis by maintaining a morphogenic paracrine gradient of bone morphogenetic proteins. *J Cell Sci.* 2005; 118:5257-68.

30. Hobeika E, Armouti M, Kala H, Fierro MA, Winston NJ, Scoccia B, et al. Oocyte-secreted factors synergize with FSH to promote aromatase expression in primary human cumulus cells. *J Clin Endocrinol Metab.* 2019; 104:1667-76.
31. Sugiura K, Su YQ, Diaz FJ, Pangas SA, Sharma S, Wigglesworth K, et al. Oocyte-derived BMP15 and FGFs cooperate to promote glycolysis in cumulus cells. *Development.* 2007; 134:2593-603.
32. Chang HM, Cheng JC, Klausen C, Leung PC. BMP15 suppresses progesterone production by down-regulating StAR via ALK3 in human granulosa cells. *Mol Endocrinol.* 2013; 27:2093-104.
33. Su YQ, Wu X, O'Brien MJ, Pendola FL, Denegre JN, Matzuk MM, et al. Synergistic roles of BMP15 and GDF9 in the development and function of the oocyte-cumulus cell complex in mice: genetic evidence for an oocyte-granulosa cell regulatory loop. *Dev Biol.* 2004; 276:64-73.
34. Li R, Albertini DF. The road to maturation: somatic cell interaction and self-organization of the mammalian oocyte. *Nat Rev Mol Cell Biol.* 2013; 14:141-52.
35. Zhang HH, Xu PY, Wu J, Zou WW, Xu XM, Cao XY, et al. Dehydroepiandrosterone improves follicular fluid bone morphogenetic protein-15 and accumulated embryo score of infertility patients with diminished ovarian reserve undergoing in vitro fertilization: a randomized controlled trial. *J Ovarian Res.* 2014; 7:93.
36. Barroso G, Barrionuevo M, Rao P, Graham L, Danforth D, Huey S, et al. Vascular endothelial growth factor, nitric oxide, and leptin follicular fluid levels correlate negatively with embryo quality in IVF patients. *Fertil Steril.* 1999; 72:1024-6.
37. Younis JS, Laufer N. Recombinant luteinizing hormone supplementation to recombinant follicle stimulating hormone therapy in gonadotropin releasing hormone analogue cycles: what is the evidence? *Curr Med Res Opin.* 2018; 34:881-6.
38. Crawford JL, McNatty KP. The ratio of growth differentiation factor 9: bone morphogenetic protein 15 mRNA expression is tightly co-regulated and differs between species over a wide range of ovulation rates. *Mol Cell Endocrinol.* 2012; 348:339-43.
39. Christoforou ER, Pitman JL. Intrafollicular growth differentiation factor 9: bone morphogenetic 15 ratio determines litter size in mammals. *Biol Reprod.* 2019; 100:1333-43.
40. Sudiman J, Ritter LJ, Feil DK, Wang X, Chan K, Mottershead DG, et al. Effects of differing oocyte-secreted factors during mouse in vitro maturation on subsequent embryo and fetal development. *J Assist Reprod Genet.* 2014; 31:295-306.
41. Hussein TS, Thompson JG, Gilchrist RB. Oocyte-secreted factors enhance oocyte developmental competence. *Dev Biol.* 2006; 296:514-21.

Figures

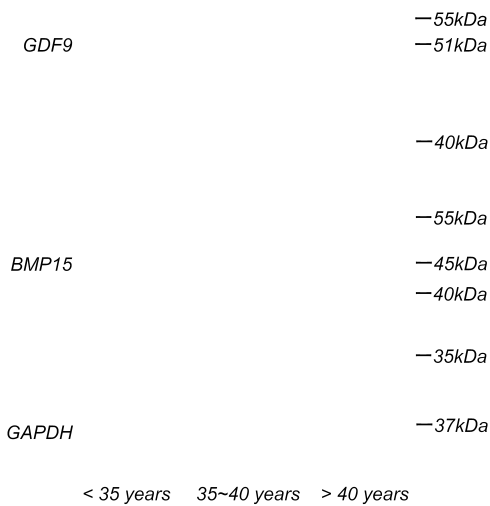
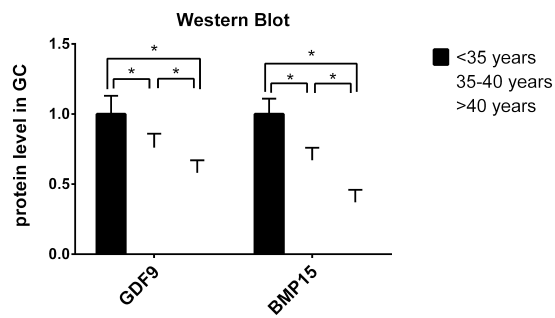
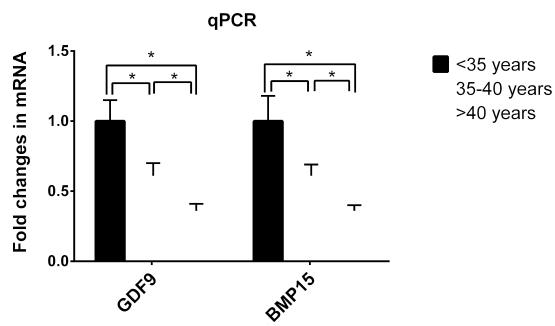


Figure 1

The gene and protein levels of GDF9 and BMP15 in GCs were decreased with increasing age. A The relatively mRNA levels of GDF9 and BMP15 were significantly different between the three groups ($P < 0.05$). They were decreased with increasing age. GAPDH, β -actin and HPRT were used as the internal controls. B The relatively protein levels of GDF9 and BMP15 were significantly different between the three

groups ($P < 0.05$). They were decreased with increasing age. GAPDH was used as internal control. C A single band at 51 kDa represented GDF9, and 45 kDa represented BMP15 by western blot, respectively.

Supplementary Files

This is a list of supplementary files associated with this preprint. Click to download.

- [coidisclosureDongshengXiong.pdf](#)
- [coidisclosureHaoTan.pdf](#)
- [coidisclosureTaiQingZhong.pdf](#)
- [coidisclosureJesseLiLing.pdf](#)
- [coidisclosureJiajingWei.pdf](#)
- [coidisclosureYanGong.pdf](#)