

Hypoactivity, Abnormal Musculature, and Learning and Memory Defects in *slc6a3* zebrafish Mutant Larvae

Yu Jiang

Wuxi No 2 People's Hospital

Nan Geng

Wuxi No 2 People's Hospital

Peisong Wang

Dong'e Peoples Hospital

Xiaojie Lu (✉ xiaojielu2010@126.com)

Wuxi No 2 People's Hospital <https://orcid.org/0000-0002-4027-5282>

Research Article

Keywords: zebrafish, *slc6a3*, musculature injury, learning, memory

Posted Date: March 17th, 2021

DOI: <https://doi.org/10.21203/rs.3.rs-305056/v1>

License:  This work is licensed under a Creative Commons Attribution 4.0 International License.

[Read Full License](#)

Abstract

Dopamine (DA) is one of the most common neurotransmitters in living organisms and is involved in the regulation of behavior, physiology, and disease. The dopamine transporter (DAT, encoded by the *slc6a3* gene) re-uptakes dopamine from the synaptic cleft back into neurons, which plays a critical role in regulating dopamine signaling. Clinically, mutations in *slc6a3* have been implicated in various diseases. Zebrafish are good model organisms for studying the functions of *slc6a3* and dopamine. Work using the zebrafish *slc6a3* mutant has previously been reported, but this mutant is not a complete loss-of-function mutant. In the present study, we knocked out the *slc6a3* gene using CRISPR/Cas9 technology and obtained a zebrafish mutant with complete loss of function of *slc6a3*. Behavioral assessments and quantitative reverse transcription (qRT)-PCR revealed musculature injury, decreased activity, and decreased learning and memory ability in the *slc6a3* mutant. This study provides a new theoretical basis for understanding the function of *slc6a3* and provides a new model organism for studying the molecular pathology underscoring dopamine metabolism-related diseases. It also provides a suitable model for high-throughput screening of small-molecule drugs targeting *slc6a3*.

Introduction

DA is a neurotransmitter that transmits information between neurons and regulates exercise, attention, learning, and emotional reactions^[1-4]. Disorders of dopamine metabolism can lead to many physiological changes including attention deficit hyperactivity disorder (ADHD), learning defects, and depression^[5, 6]. Recent studies have reported that disorders of dopamine metabolism are also associated with Parkinson's disease^[7]. The main treatment for clinical Parkinson's disease is the drug L-dopa, which stimulates dopamine production^[8, 9]. In addition, dopamine is associated^[8, 9] with schizophrenia, but its role in this disorder is not fully understood^[10]. Further, addictive substances such as cocaine affect dopamine secretion, which can promote the development of addiction^[11].

The metabolism of dopamine includes the synthesis, release, re-absorption, and degradation of dopamine^[12]. Presynaptic neurotransmitter re-uptake is mediated by the transmembrane dopamine transporter (DAT) and is the primary mechanism for terminating synaptic transmission^[13]. The DAT is encoded by the *slc6a3* gene and is a sodium and chloride ion-dependent transmembrane neurotransmitter transporter^[14, 15]. Since the time of dopamine activity in the synaptic cleft determines dopamine transmission, *slc6a3* is critical for the maintenance of dopamine homeostasis and controlling the duration of dopamine signaling.

Clinical research has indicated that hereditary and pharmacological changes in *slc6a3* affect human health. Polymorphisms of *slc6a3* (rs28363170, rs393795) are associated with levodopa-induced dyskinesias in Parkinson's disease during treatment of Parkinson's disease^[16, 17]. Moreover, polymorphisms of *slc6a3* are associated with extreme behavioral characteristics and diseases such as anger-type personality disorder, destructive behavior disorder, overeating, attention deficit, hyperactivity,

and alcohol dependence^[17-20]. In autism patients, deletion of a single amino of the *slc6a3* gene was identified to alter transmembrane structural conformation of the protein^[21]. Tissues in *slc6a3* mutant mice exhibit a substantial decrease in DA content and excitatory motor activity^[22]. The activity of *slc6a3* is low in patients with general anxiety disorder^[23]. In addition, *slc6a3* is also a target of cocaine and alcohol^[11]. Drug and alcohol abuse can reduce the expression of this gene, resulting in abnormal changes in behavior and mood.

Zebrafish are excellent model organisms that have been used successfully in the field of biomedical science for many years. The *slc6a3* zebrafish knockout mutant was successfully established in 2008 using zinc finger nucleases made by Oligomerized Pool ENgineering (OPEN) technology^[24]. Subsequent studies have revealed that zebrafish *slc6a3* mutants exhibit anxiety-like behavior^[25]. As *slc6a3* is mainly expressed in dopaminergic neurons, *slc6a3*:GFP has been established^[26], and green fluorescence is mainly observed in ventral diencephalon (vDC) clusters, amacrine cells in the retina, olfactory bulb, pretectum, and caudal hypothalamus, similar to the results of *in situ* hybridization experiments^[27]. The dopaminergic system of zebrafish is highly conserved compared to that of mice and humans; thus, dopamine-related studies are abundant in zebrafish. Zebrafish therefore serve as a good model to study DAT-related disorders and relevant mechanisms.

In this study, we first constructed an *slc6a3* mutant using CRISPR/Cas9 technology. We then used behavioral and gene expression assays to investigate the musculature, behavior, learning, and memory in the *slc6a3* mutant.

Materials And Methods

Zebrafish cultivation and egg production

Adult AB strain zebrafish were raised in a recirculating water system under a 14-/10-h light/dark cycle at 28°C and fed three times per day. To produce embryos, male and female zebrafish were paired in the evening; spawning occurred the next day within 1 h of the lights being switched on. The embryos were placed in 10-cm Petri dishes containing egg water with methylene blue (0.3 ppm) and raised in a light-controlled (14-/10-h light/dark) incubator at 28°C. At 6 days post-fertilization (dpf), samples were collected for quantitative reverse transcription (qRT)-PCR analysis.

Generation of *slc6a3* mutant zebrafish

slc6a3 mutants were generated using CRISPR-Cas9 technology. We designed the target site at the first exon and synthesized gRNA *in vitro*. gRNA (50 pg) and Cas9-capRNA (300 pg) were co-injected into zebrafish embryos at the one-cell stage. The fragment containing the mutation was PCR-amplified with primers P1 and P2 (Table 1), and confirmed by DNA sequencing. Two types of base deletion existed; both resulted in a premature stop codon leading to a truncated protein of only 39 or 73 amino acids (aa).

RNA isolation, cDNA synthesis and qRT-PCR

Total RNA was extracted from more than 30 larvae with TRIzol® reagent (Invitrogen) and reverse transcribed into cDNAs using SuperScript™ III Reverse Transcriptase (Invitrogen). qRT-PCR was performed in an ABI StepOnePlus™ instrument (7500) using the TB Green® system (TaKaRa) with thermal cycling through 40 cycles at 95°C for 10 sec and 60°C for 30 sec. Each qRT-PCR analysis was performed in triplicate on three independent biological samples. The housekeeping gene *β-actin* was amplified as a control. All results were standardized to the expression level of *β-actin*. Relative mRNA expression levels were calculated using the $2^{-\Delta\Delta C_t}$ method. Calculations were performed in Microsoft Excel. qRT-PCR primers for exon boundaries were designed using Primer Express 3.0 software and checked for self-annealing, heterodimerization, and hairpin structure formation with Oligo Analyzer 3.1. Primer sequences are listed in Table 1.

Touch-evoked escape response

Wild-type (WT) and *slc6a3*^{-/-} embryos were raised in the same standard conditions described above. At 48 and 96 hours post-fertilization (hpf), mechanical stimulation was performed using an insect pin attached to a micromanipulator. Light touches were applied to the side of the embryo at somites 14–16, at the level of the caudal part of the yolk tube. Each trial consisted of a recording of the spontaneous activity for 2 min, followed by three to five stimulations, each separated by at least 1 s. Responses of larvae to pin stimulation were video captured.

Behavioral analysis

Embryos were raised to 72 hpf in the same standard conditions described above. All analyses were performed during the light portion of the 14 h light:10 h dark cycle at the same time of day. The larvae were transferred to clear 96-well plates with lids (one individual per well) and allowed to acclimate overnight. Analyses were performed in an isolated room maintained at 28.5°C. The movement of 4 dpf larvae was video captured and quantified using an infrared camera setup and tracking extension of the software system (Noldus Information Technology). In all behavioral protocols, animal color was set to black, and background-subtracted detection threshold was set to 20 sec. This value represented a greyscale pixel intensity value; any pixels darker than this threshold in the video were detected as the animal. The integration period (bin time) for movement *slc6a3* mutant was set to 10 sec. *slc6a3* mutant were processed and analyzed using Excel, and Fast Monitor (Noldus Information Technology).

Statistical analyses

Data are presented as means ± SD. Statistical differences between groups were determined using Student's t-test. All experiments were repeated at least three times. A p-value <0.05 was considered statistically significant.

Results

Construction of *slc6a3* null mutant zebrafish

The CRISPR Cas9 system was used to construct *slc6a3* mutant zebrafish. The zebrafish *slc6a3* gene includes 17 exons encoding 629 amino acids. The transcription initiation site ATG is located in the first exon (Fig. 1A). We designed the gRNA locus behind ATG, then synthesized gRNA and Cas9 Capped mRNA *in vitro*, which were co-injected into zebrafish single-cell fertilized eggs. We then screened heritable zebrafish mutants in adulthood. The results revealed that two line *slc6a3* mutants with four and five base deletions were successfully screened (Fig. 1B). Bioinformatics analysis of the mutant sequences revealed that the predicted *slc6a3* mutant sequences encoded 39 and 73 truncated polypeptides, respectively (Fig. 1C). qRT-PCR was used to quantify *slc6a3* mRNA, revealing that the expression of the *slc6a3* gene was significantly decreased in the *slc6a3* mutant (Fig. 2A). DA content was detected using ELISA assay. DA content in the *slc6a3* mutant was significantly decreased (Fig. 2B).

Weak touch-evoked escape response in *slc6a3* mutants

Touch-evoked escape response assays are a method to assess muscle performance and function in zebrafish^[28]. To explore the role of *slc6a3* in muscle function, we performed touch-evoked escape response assays in WT and *slc6a3* mutant zebrafish (Fig. 3A-H). At 48 hpf, WT zebrafish rapidly swam out of the field of view after tip stimulation. In contrast, most *slc6a3* mutant larvae remained in the field of view despite swimming after stimulation (Fig. 3A-B and E-F). Similar results was observed in 96 hpf larvae (Fig. 3C-D and G-H).

Decreased locomotor activity in *slc6a3* mutants

To investigate the effects of *slc6a3* mutations on autonomic activity, behavioral experiments were performed to examine the activity of *slc6a3* mutants. At 10 mins, the swimming distance of *slc6a3* mutants was significantly lower than that of WTs (Fig. 4A). Analysis of the cumulative swimming distance revealed that the difference between *slc6a3* mutants and WTs increased over time (Fig. 4B). Statistical analysis of total swimming distance revealed that the total swimming distance was significantly lower in *slc6a3* mutants than in WTs (Fig. 4C). The speed of swimming is also an important indicator of the amount of activity. Swimming speed of *slc6a3* mutants was significantly lower than that of WTs (Fig. 4D). These results indicated that the *slc6a3* mutation reduced zebrafish locomotor activity.

Deficits in learning and memory in *slc6a3* mutants

To further investigate the role of *slc6a3* in learning and memory, a single multiple light experiment was used to detect learning and memory ability in *slc6a3* mutants. When the number of repeated light-dark cycles increased, the swimming speed of fish larvae began to decrease, and the speed of *slc6a3* mutants was always lower than that of WT fish (Fig. 5A). In addition, the swimming speed of WT fish remained stable (platform) after a period of time, while the swimming speed of *slc6a3* mutants continued to decrease (Fig. 5A). Data analysis of behavior indicated that *slc6a3* mutant zebrafish took longer to reach

the platform than did WT zebrafish (Fig. 5B). These results implied that learning and memory in *slc6a3* mutants were impaired.

Alteration in expression patterns of learning and memory-related genes in *slc6a3* mutants

To further investigate the reasons underlying learning and memory abnormalities in *slc6a3* mutants, qRT-PCR was used to detect the expression of learning and memory-related genes in WT and *slc6a3* mutants. There was no significant difference in the expression of *creb1a* and *bdnf* in *slc6a3* mutants when compared with WT. *fosl2* and *hat1* were up-regulated in *slc6a3* mutants when compared with WT.

Discussion

Numerous studies have used zebrafish as a model to study DA or drug addiction^[25, 29-31]. These investigations have been facilitated by the evolution of the relatively primitive DA metabolism and response system in zebrafish. In this study, zebrafish *slc6a3*-deficient mutants were successfully established using CRISP/Cas9 technology. We observed that *slc6a3* mutants exhibited weaker responses to stimulation, decreased motor activity, and impaired learning and memory.

Slc6a3 belongs to the *SLC6* gene family, which comprises a variety of neurotransmitter transporters^[14]. The protein encoded by *slc6a3* has a membrane structure composed of 12 transmembrane helices (TMs), an intracellular N-terminus, a C-terminus, and an extracellular glycosylation loop located between TM3 and TM4^[14]. Zebrafish *slc6a3* mutants have been reported in previous studies, but the mutation site is located in the 12th exon^[24, 25]. This mutant protein still contains TM1-TM10, N-terminal, and glycosyl rings. Further, the C-terminus of *slc6a3*-encoded protein has multiple response sites, such as PCK and CamKII regulatory sites^[32]. Thus, this mutant may not be a complete loss-of-function mutant. Subsequent studies have found that this mutant exhibits an anxious phenotype. In this study, we knocked out the *slc6a3* gene using a specific CRISPR system to obtain two mutants. The gRNA design site in our mutant was adjacent to the transcription start site. Thus, the mutant we obtained completely lacked TMs, glycosylation loop, and C-terminus, and was a null mutant with complete loss of function. This provides a suitable model organism for studying DA metabolism, *slc6a3*-related functions, and drug screening.

Touch-evoked escape response assays enable investigation of neuromuscular disorders in zebrafish in response to tactile stimuli^[33]. After tactile stimuli presentation, *slc6a3* mutants demonstrated significantly slower responses and did not exhibit escape responses. This indicated that the muscle tissue of zebrafish *slc6a3* mutants was negatively affected. Autonomous swimming experiments revealed that the activity of *slc6a3* mutants was significantly reduced. Whether the decrease in behavior was due to the negative effects of muscles remains unknown. Tactile responses of zebrafish are regulated by spinal nerve circuits, and Mauthner neurons are involved in escape responses to tactile stimuli in zebrafish^[34]. The presence of DA receptors, expression of *slc6a3* in the spinal cord, and whether behavioral abnormalities are due to the absence of *slc6a3* in the spinal cord requires further investigation.

Zebrafish are excellent model organisms for studying learning and memory^[35]. Many experimental techniques and methods are based on the behavior of adult fish such as the T-maze, but there are limited experiments based on fish larvae^[36, 37]. Previous studies have revealed that zebrafish larvae can produce memories of multiple light and dark stimuli^[38]. In this study, we presented 3 min dark/1 min light and examined learning and memory based on the speed and time taken by zebrafish to reach the platform. Time to reach the platform was longer for *slc6a3* mutants than for WT fish, indicating that the loss of *slc6a3* affected learning and memory of zebrafish larvae. In mammals, DA regulates hippocampal-dependent learning. In previous mouse *slc6a3* mutants, it was reported that the decrease in *slc6a3* expression in mice impaired learning in a running experiment^[39]. In patients with Parkinson's disease, the expression level of *slc6a3* is significantly reduced and is accompanied by learning and memory impairments^[40].

The process of learning and memory involves many neurochemical systems and mainly occurs at the synapse. In this study, gene expression of learning and memory-related genes was examined. The expression of *creb1a* and *bdnf* was not significantly altered in *slc6a3* mutants. The expression of *fosl2* and *hat1* was significantly elevated in *slc6a3* mutants. *Creb1a* encodes an effector molecule of the cAMP signaling pathway and is a classical learning and memory-related gene^[41]. *Bdnf* encodes a neurotrophic factor in the brain that regulates the differentiation and growth of neurons^[42]. No changes in expression of these two genes were observed, suggesting that *slc6a3* does not affect these two genes in the context of learning and memory. *Fosl2* is an early expression gene related to learning and memory, and *hat1* encodes histone acetyltransferase 1^[43, 44]. Expression of these genes in *slc6a3* mutants was elevated, suggesting that the deletion of *slc6a3* or disorders of DA signaling may affect functional changes in learning and memory via these genes, but the intrinsic mechanisms require further research.

To conclude, in this study, zebrafish *slc6a3* mutants were successfully established by CRISP/Cas9 technology. Using behavior and qRT-PCR experiments, we demonstrate muscle injury, decreased activity, and decreased learning and memory in *slc6a3* mutants. This study provides a new model organism for researching the molecular pathology underscoring DA metabolism-related diseases and for screening high-throughput small-molecule drugs targeting *slc6a3*.

Declarations

Acknowledgments

This work was supported by grants from National Natural Science Foundation of China (81602864), National science foundation for postdoctoral (2019T120461), Jiangsu postdoctoral science foundation, Jiangsu young medical talents fund, Wuxi science and technology bureau project (WX18IIAN020)

Availability of data and material

Not applicable

Compliance with ethical standards

Conflict of interest

All authors have no conflicts of interest.

Ethical approval

All procedures were approved by the Nanjing Medical University Animal Care and Use Committee and were performed in accordance with the governmental regulations of China.

Authors' contributions

Xiaojie Lu and Yu Jiang design the whole experiments, Yu Jiang, Nan Gen and Peisong Wang performed all the experiments, Xiaojie Lu and Yu Jiang prepare the manuscript.

References

1. Wise RA (2004) Dopamine, learning and motivation. *Nature Reviews Neuroscience* 5: 483-494. DOI 10.1038/nrn1406
2. Hranilovic D, Bucan M, Wang Y (2008) Emotional response in dopamine D2L receptor-deficient mice. *Behavioural brain research* 195: 246-250. DOI 10.1016/j.bbr.2008.09.007
3. Berry JA, Cervantes-Sandoval I, Nicholas EP, Davis RL (2012) Dopamine is required for learning and forgetting in *Drosophila*. *Neuron* 74: 530-542. DOI 10.1016/j.neuron.2012.04.007
4. Bertolino A, Blasi G, Latorre V, Rubino V, Rampino A, Sinibaldi L, Caforio G, Petruzzella V, Pizzuti A, Scarabino T, Nardini M, Weinberger DR, Dallapiccola B (2006) Additive effects of genetic variation in dopamine regulating genes on working memory cortical activity in human brain. *The Journal of neuroscience : the official journal of the Society for Neuroscience* 26: 3918-3922. DOI 10.1523/JNEUROSCI.4975-05.2006
5. Vaughan RA, Foster JD (2013) Mechanisms of dopamine transporter regulation in normal and disease states. *Trends in Pharmacological Sciences* 34: 489-496. DOI 10.1016/j.tips.2013.07.005
6. Remy P, Doder M, Lees A, Turjanski N, Brooks D (2005) Depression in Parkinson's disease: loss of dopamine and noradrenaline innervation in the limbic system. *Brain : a journal of neurology* 128: 1314-1322. DOI 10.1093/brain/awh445
7. Kurian MA, Zhen J, Cheng SY, Li Y, Mordekar SR, Jardine P, Morgan NV, Meyer E, Tee L, Pasha S, Wassmer E, Heales SJ, Gissen P, Reith ME, Maher ER (2009) Homozygous loss-of-function mutations in the gene encoding the dopamine transporter are associated with infantile parkinsonism-dystonia. *The Journal of clinical investigation* 119: 1595-1603. DOI 10.1172/JCI39060

8. Lipski J, Nistico R, Berretta N, Guatteo E, Bernardi G, Mercuri NB (2011) L-DOPA: a scapegoat for accelerated neurodegeneration in Parkinson's disease? *Progress in neurobiology* 94: 389-407. DOI 10.1016/j.pneurobio.2011.06.005
9. Guin D, Mishra MK, Talwar P, Rawat C, Kushwaha SS, Kukreti S, Kukreti R (2017) A systematic review and integrative approach to decode the common molecular link between levodopa response and Parkinson's disease. *BMC medical genomics* 10: 56. DOI 10.1186/s12920-017-0291-0
10. Lodge DJ, Grace AA (2011) Developmental pathology, dopamine, stress and schizophrenia. *International journal of developmental neuroscience : the official journal of the International Society for Developmental Neuroscience* 29: 207-213. DOI 10.1016/j.ijdevneu.2010.08.002
11. Thomsen M, Han DD, Gu HH, Caine SB (2009) Lack of cocaine self-administration in mice expressing a cocaine-insensitive dopamine transporter. *The Journal of pharmacology and experimental therapeutics* 331: 204-211. DOI 10.1124/jpet.109.156265
12. Qi Z MG, Voit EO (2008) Computational Systems Analysis of Dopamine Metabolism. *PloS one* 3(6): e2444. DOI 10.1371/journal.pone.0002444.g001
13. Kahlig KM, Galli A (2003) Regulation of dopamine transporter function and plasma membrane expression by dopamine, amphetamine, and cocaine. *European Journal of Pharmacology* 479: 153-158. DOI 10.1016/j.ejphar.2003.08.065
14. Kristensen AS, Andersen J, Jorgensen TN, Sorensen L, Eriksen J, Loland CJ, Stromgaard K, Gether U (2011) SLC6 neurotransmitter transporters: structure, function, and regulation. *Pharmacological reviews* 63: 585-640. DOI 10.1124/pr.108.000869
15. Manepalli S, Surratt CK, Madura JD, Nolan TL (2012) Monoamine transporter structure, function, dynamics, and drug discovery: a computational perspective. *The AAPS journal* 14: 820-831. DOI 10.1208/s12248-012-9391-0
16. Barbara C van Munster MY, Michael WT Tanck, Sophia EJA de Rooij, Elsmarieke van de Giessen, Eric JG Sijbrands, Aeilko H Zwinderman, Johanna C Korevaar (2010) Genetic polymorphisms in the DRD2, DRD3 and SLC6A3 gene in elderly patients with delirium. *American Journal of Medical Genetics Part B Neuropsychiatric Genetics* 153B: 38-45
17. Moreau C, Meguig S, Corvol JC, Labreuche J, Vasseur F, Duhamel A, Delval A, Bardyn T, Devedjian JC, Rouaix N, Petyt G, Brefel-Courbon C, Ory-Magne F, Guehl D, Eusebio A, Fraix V, Saulnier PJ, Lagha-Boukbiza O, Durif F, Faighel M, Giordana C, Drapier S, Maltete D, Tranchant C, Houeto JL, Debu B, Azulay JP, Tison F, Destee A, Vidailhet M, Rascol O, Dujardin K, Defebvre L, Bordet R, Sablonniere B, Devos D, Parkgait IISG (2015) Polymorphism of the dopamine transporter type 1 gene modifies the treatment response in Parkinson's disease. *Brain : a journal of neurology* 138: 1271-1283. DOI 10.1093/brain/awv063
18. Joyce PR, McHugh PC, Light KJ, Rowe S, Miller AL, Kennedy MA (2009) Relationships between angry-impulsive personality traits and genetic polymorphisms of the dopamine transporter. *Biological psychiatry* 66: 717-721. DOI 10.1016/j.biopsych.2009.03.005

19. Lee SS, Lahey BB, Waldman I, Van Hulle CA, Rathouz P, Pelham WE, Loney J, Cook EH (2007) Association of dopamine transporter genotype with disruptive behavior disorders in an eight-year longitudinal study of children and adolescents. *American journal of medical genetics Part B, Neuropsychiatric genetics : the official publication of the International Society of Psychiatric Genetics* 144B: 310-317. DOI 10.1002/ajmg.b.30447
20. Shinohara M MH, Hirano M, Shioe K, Nakazawa M, Hiejima Y, Ono Y, Kanba S (2004) Eating disorders with binge-eating behaviour are associated with the s allele of the 3'-UTR VNTR polymorphism of the dopamine transporter gene. *Journal of Psychiatry & Neuroscience Jpn* 29(2): 134-137
21. Bowton E, Saunders C, Reddy IA, Campbell NG, Hamilton PJ, Henry LK, Coon H, Sakrikar D, Veenstra-VanderWeele JM, Blakely RD, Sutcliffe J, Matthies HJ, Erreger K, Galli A (2014) SLC6A3 coding variant Ala559Val found in two autism probands alters dopamine transporter function and trafficking. *Translational psychiatry* 4: e464. DOI 10.1038/tp.2014.90
22. Perona MT, Waters S, Hall FS, Sora I, Lesch KP, Murphy DL, Caron M, Uhl GR (2008) Animal models of depression in dopamine, serotonin, and norepinephrine transporter knockout mice: prominent effects of dopamine transporter deletions. *Behavioural pharmacology* 19: 566-574. DOI 10.1097/FBP.0b013e32830cd80f
23. Schneier FR, Abi-Dargham A, Martinez D, Slifstein M, Hwang DR, Liebowitz MR, Laruelle M (2009) Dopamine transporters, D2 receptors, and dopamine release in generalized social anxiety disorder. *Depression and anxiety* 26: 411-418. DOI 10.1002/da.20543
24. Foley JE, Yeh JR, Maeder ML, Reyon D, Sander JD, Peterson RT, Joung JK (2009) Rapid mutation of endogenous zebrafish genes using zinc finger nucleases made by Oligomerized Pool ENgineering (OPEN). *PloS one* 4: e4348. DOI 10.1371/journal.pone.0004348
25. Kacprzak V, Patel NA, Riley E, Yu L, Yeh JJ, Zhdanova IV (2017) Dopaminergic control of anxiety in young and aged zebrafish. *Pharmacology, biochemistry, and behavior* 157: 1-8. DOI 10.1016/j.pbb.2017.01.005
26. Xi Y, Yu M, Godoy R, Hatch G, Poitras L, Ekker M (2011) Transgenic zebrafish expressing green fluorescent protein in dopaminergic neurons of the ventral diencephalon. *Developmental dynamics : an official publication of the American Association of Anatomists* 240: 2539-2547. DOI 10.1002/dvdy.22742
27. Bai Q, Burton EA (2009) Cis-acting elements responsible for dopaminergic neuron-specific expression of zebrafish *slc6a3* (dopamine transporter) in vivo are located remote from the transcriptional start site. *Neuroscience* 164: 1138-1151. DOI 10.1016/j.neuroscience.2009.09.014
28. Pietri T, Manalo E, Ryan J, Saint-Amant L, Washbourne P (2009) Glutamate drives the touch response through a rostral loop in the spinal cord of zebrafish embryos. *Developmental neurobiology* 69: 780-795. DOI 10.1002/dneu.20741
29. Boehmler W, Obrecht-Pflumio S, Canfield V, Thisse C, Thisse B, Levenson R (2004) Evolution and expression of D2 and D3 dopamine receptor genes in zebrafish. *Developmental dynamics : an*

- official publication of the American Association of Anatomists 230: 481-493. DOI 10.1002/dvdy.20075
30. Riley E, Kopotiyenko K, Zhdanova I (2015) Prenatal and acute cocaine exposure affects neural responses and habituation to visual stimuli. *Frontiers in neural circuits* 9: 41. DOI 10.3389/fncir.2015.00041
 31. Li P, Shah S, Huang L, Carr AL, Gao Y, Thisse C, Thisse B, Li L (2007) Cloning and spatial and temporal expression of the zebrafish dopamine D1 receptor. *Developmental dynamics : an official publication of the American Association of Anatomists* 236: 1339-1346. DOI 10.1002/dvdy.21130
 32. Gorentla B K MAE, Foster J D (2009) Proline-Directed Phosphorylation of the Dopamine Transporter N-Terminal Domain. *Biochemistry* 48(5): 1067-1076
 33. Sztal TE, Ruparella AA, Williams C, Bryson-Richardson RJ (2016) Using Touch-evoked Response and Locomotion Assays to Assess Muscle Performance and Function in Zebrafish. *Journal of visualized experiments : JoVE*. DOI 10.3791/54431
 34. Eaton R C FRD, Kimmel C B (1977) Functional development in the Mauthner cell system of embryos and larvae of the zebrafish. *Developmental neurobiology* 8(2): 151-172
 35. Blank M, Guerim LD, Cordeiro RF, Vianna MR (2009) A one-trial inhibitory avoidance task to zebrafish: rapid acquisition of an NMDA-dependent long-term memory. *Neurobiology of learning and memory* 92: 529-534. DOI 10.1016/j.nlm.2009.07.001
 36. Asth L, Lobao-Soares B, Andre E, Soares Vde P, Gavioli EC (2012) The elevated T-maze task as an animal model to simultaneously investigate the effects of drugs on long-term memory and anxiety in mice. *Brain research bulletin* 87: 526-533. DOI 10.1016/j.brainresbull.2012.02.008
 37. Kumar V P KBV, Battula R (2014) Design and development of a novel color bias avoided and appetite conditioning T-maze model for evaluating the memory enhancing drugs in zebrafish. *International Research Journal of Pharmacy* 5(5): 434-437
 38. O'Neale A, Ellis J, Creton R, Colwill RM (2014) Single stimulus learning in zebrafish larvae. *Neurobiology of learning and memory* 108: 145-154. DOI 10.1016/j.nlm.2013.08.016
 39. Li J, Li X, Bi H, Ma K, Li B (2018) Developmental Exposure to Atrazine Impairs Spatial Memory and Downregulates the Hippocampal D1 Dopamine Receptor and cAMP-Dependent Signaling Pathway in Rats. *International journal of molecular sciences* 19. DOI 10.3390/ijms19082241
 40. Kelada SNP, Checkoway H, Kardina SLR, Carlson CS, Costa-Mallen P, Eaton DL, Firestone J, Powers KM, Swanson PD, Franklin GM, Longstreth WT, Weller T-S, Afsharinejad Z, Costa LG (2006) 5' and 3' region variability in the dopamine transporter gene (SLC6A3), pesticide exposure and Parkinson's disease risk: a hypothesis-generating study. *Human Molecular Genetics* 15: 3055-3062. DOI 10.1093/hmg/ddl247
 41. Stanciu M RJ, Spiess J (2001) Phosphorylated cAMP response element binding protein in the mouse brain after fear conditioning_ relationship to Fos production. *Brain Res Mol Brain Res* 94(1): 15-24
 42. Guilloux JP, Douillard-Guilloux G, Kota R, Wang X, Gardier AM, Martinowich K, Tseng GC, Lewis DA, Sibille E (2012) Molecular evidence for BDNF- and GABA-related dysfunctions in the amygdala of

female subjects with major depression. *Molecular psychiatry* 17: 1130-1142. DOI 10.1038/mp.2011.113

43. Nankova B B RM, Kelz M (2000) Fos-Related Antigen 2_ Potential Mediator of the Transcriptional Activation in Rat Adrenal Medulla Evoked by Repeated Immobilization Stress. *Journal of Neuroscience* 20(15): 5647-5653
44. Hawk JD, Bookout AL, Poplawski SG, Bridi M, Rao AJ, Sulewski ME, Kroener BT, Manglesdorf DJ, Abel T (2012) NR4A nuclear receptors support memory enhancement by histone deacetylase inhibitors. *The Journal of clinical investigation* 122: 3593-3602. DOI 10.1172/JCI64145

Tables

Table 1 The primer sequence

| Genes | Sequence | |
|------------------|---|---------|
| <i>slc6a3-P3</i> | TAATACGACTCACTATAGGCCGCCGGGCCCGG AGAGGGTTTTAGAGCTAGAAATAGC | KO |
| <i>slc6a3</i> | GCTTCTGTGACAACTGGCG CAAACCACCAGCCAGTGATG | qRT-PCR |
| <i>creb1a</i> | GAGTCAGTGGACAGTGTGAC GTTATGGCTGGAGTGGAGTC | qRT-PCR |
| <i>bdnf</i> | TGCAAGTGTTGGTCTTGGAG CAGCTCTCATGCAACTGAAG | qRT-PCR |
| <i>fosl2</i> | GTACCAGGATTACACCGGGA CAGGCATGTCTATTCGGTAC | qRT-PCR |
| <i>hat1</i> | GATCCAGCTTTACCAGAGCG CCAGCAGGAATGATCTCTCG | qRT-PCR |

Figures

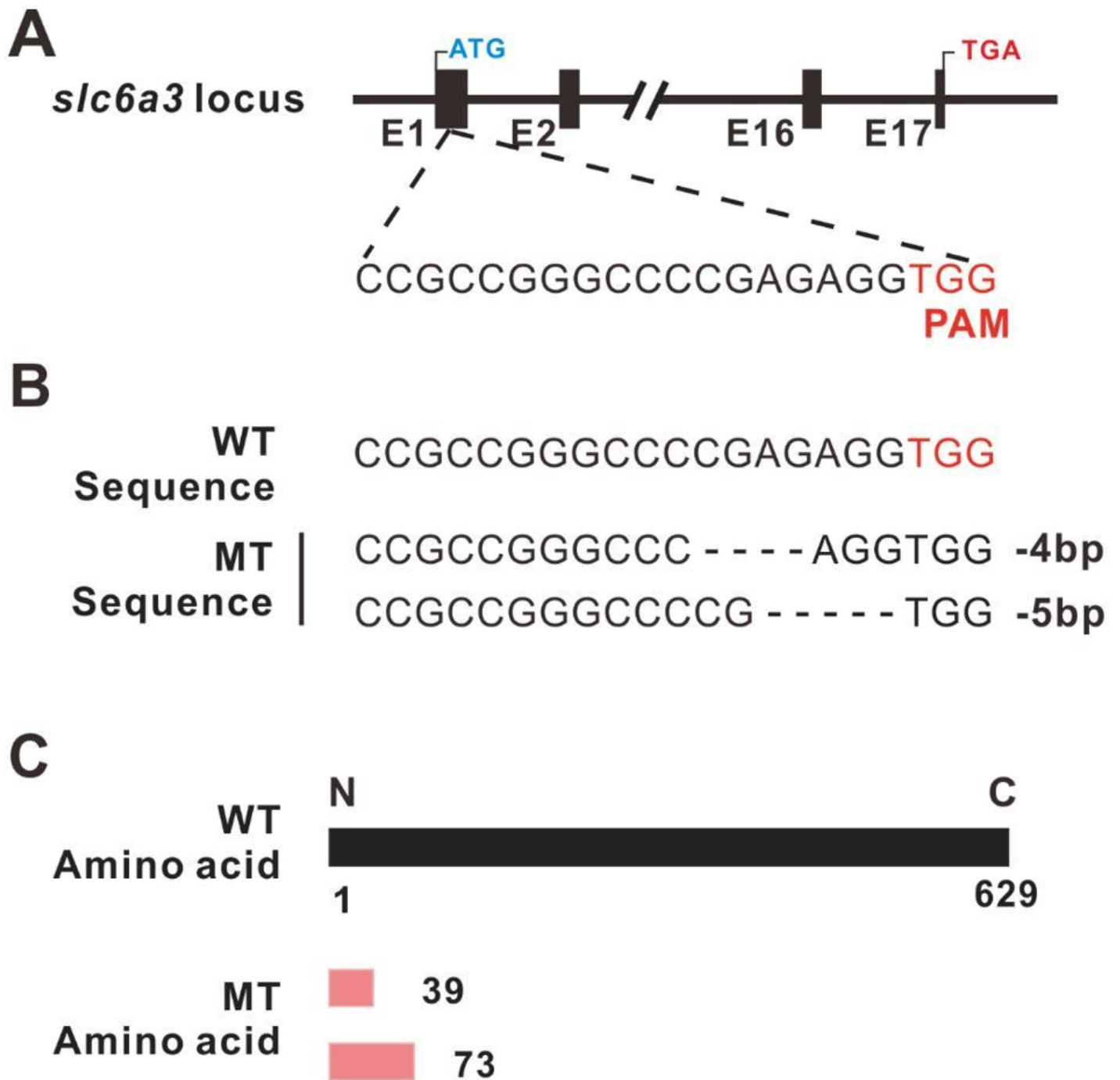


Figure 1

Generation of zebrafish *slc6a3* mutants. Schematic showing the construction of *slc6a3* mutants using wangtuoyi CRISPR-Cas9 technology. (A) The gRNA site is located at the first exon in the *slc6a3* gene locus. (B) The sequencing results revealed two mutations, which were missing four and five base pairs at the target site, respectively. (C) The truncated predicted protein length of *slc6a3* mutants

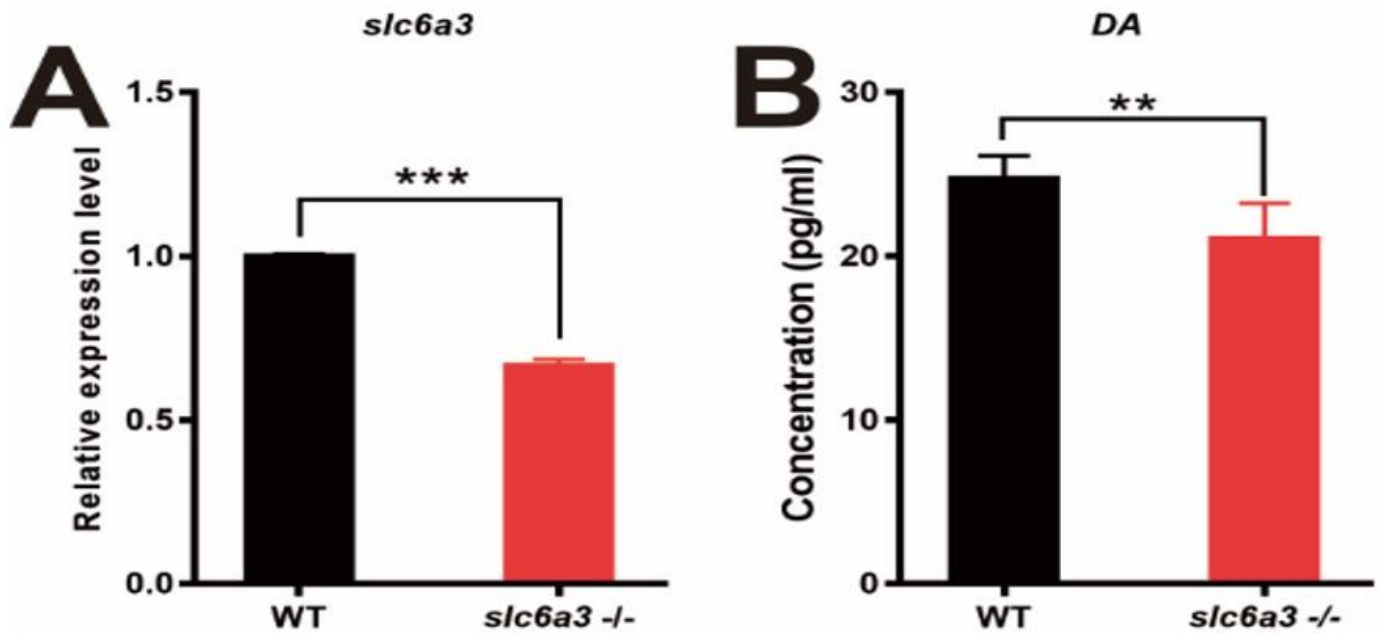


Figure 2

slc6a3 expression and dopamine (DA) content was decreased in mutants. qRT-PCR and ELISH analysis to investigate the *slc6a3* mRNA and DA levels in wild-type (WT) and *slc6a3* mutants. (A) *slc6a3* expression was significantly reduced in *slc6a3* mutants. (B) DA content was decreased in *slc6a3* mutants. Results are presented as mean \pm SD for independently performed triplicate experiments. Statistical significance was assessed via Student's t-test (** $P < 0.001$)

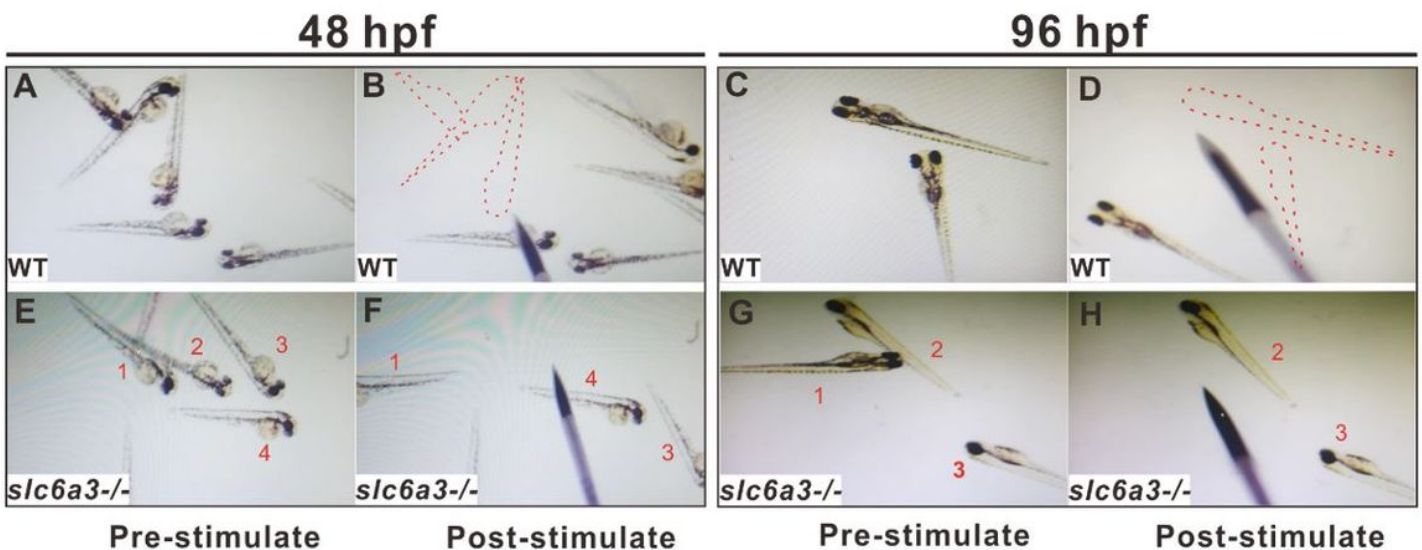


Figure 3

The ability to respond to stimuli was decreased in *slc6a3* mutants. Embryos obtained from wild-type (WT) and *slc6a3* mutant fish were studied using touch-evoked escape response assays. (A, B) At 48 hpf, WT fish were able to rapidly escape from view following disturbance (a'). (E, F) Most *slc6a3* mutant fish

remained within view of the camera after their tails were touched (b'). (C, D) At 96 hpf, (c,c') WT fish swam rapidly but (G, H) mutants remained stationary (d,d'). Similar results were observed in three independent experiments. More information is provided in the supplementary video

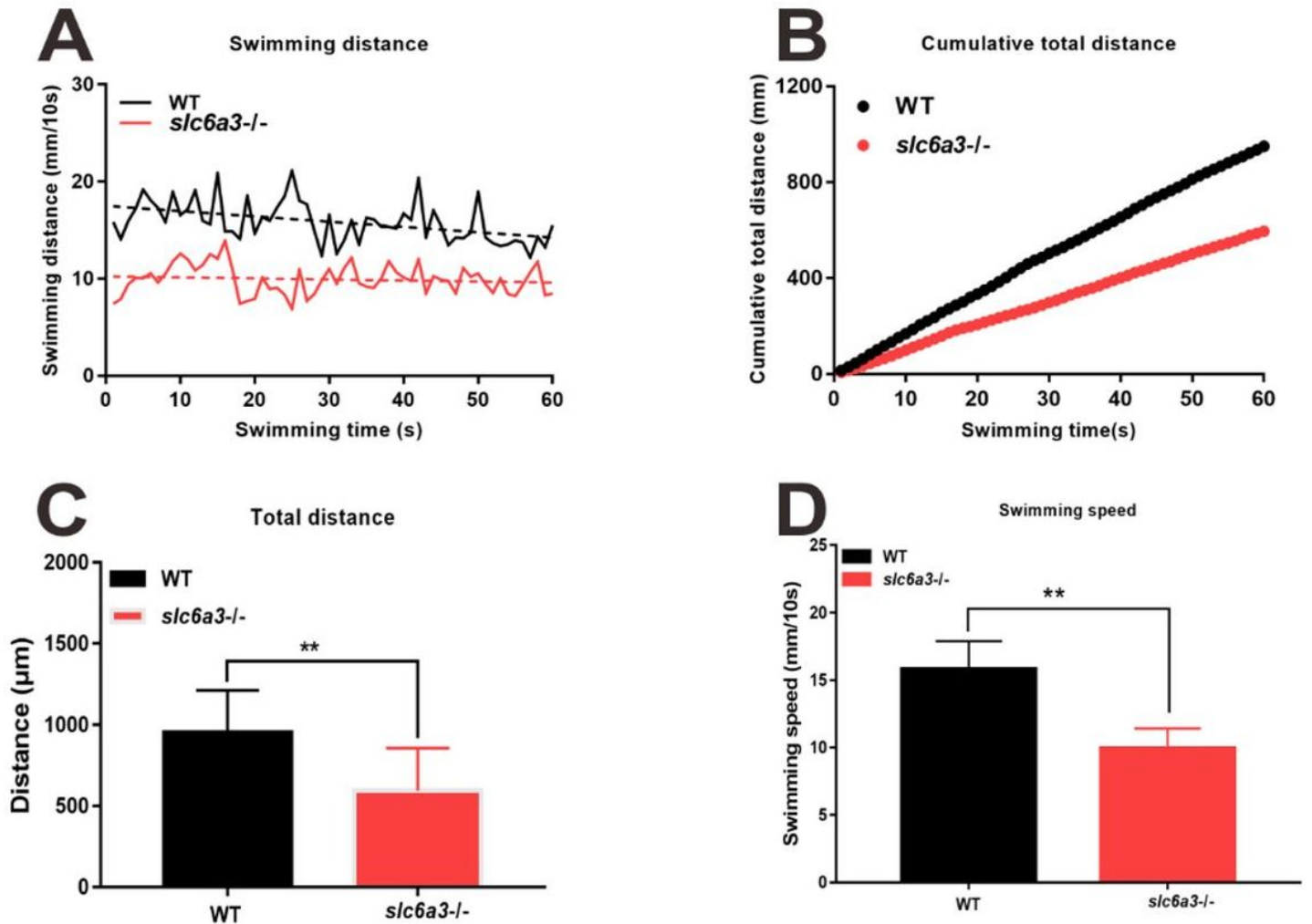


Figure 4

Locomotor activity was decreased in *slc6a3* mutants. Autonomous swimming behavior in *slc6a3* mutants and wild-type (WT) zebrafish larvae. (A) The swimming distance curve; solid lines represent the real-time distance, and dotted lines represent the mean distance. (B) Cumulative locomotor distance of WT and *slc6a3* mutants. (C) Total locomotor distance of WT and *slc6a3* mutants. (D) Swimming speed of WT and *slc6a3* mutants. Results are presented as mean \pm SD for independently performed triplicate experiments (n=24/group). Statistical significance was assessed via Student's t-test (**P < 0.01)

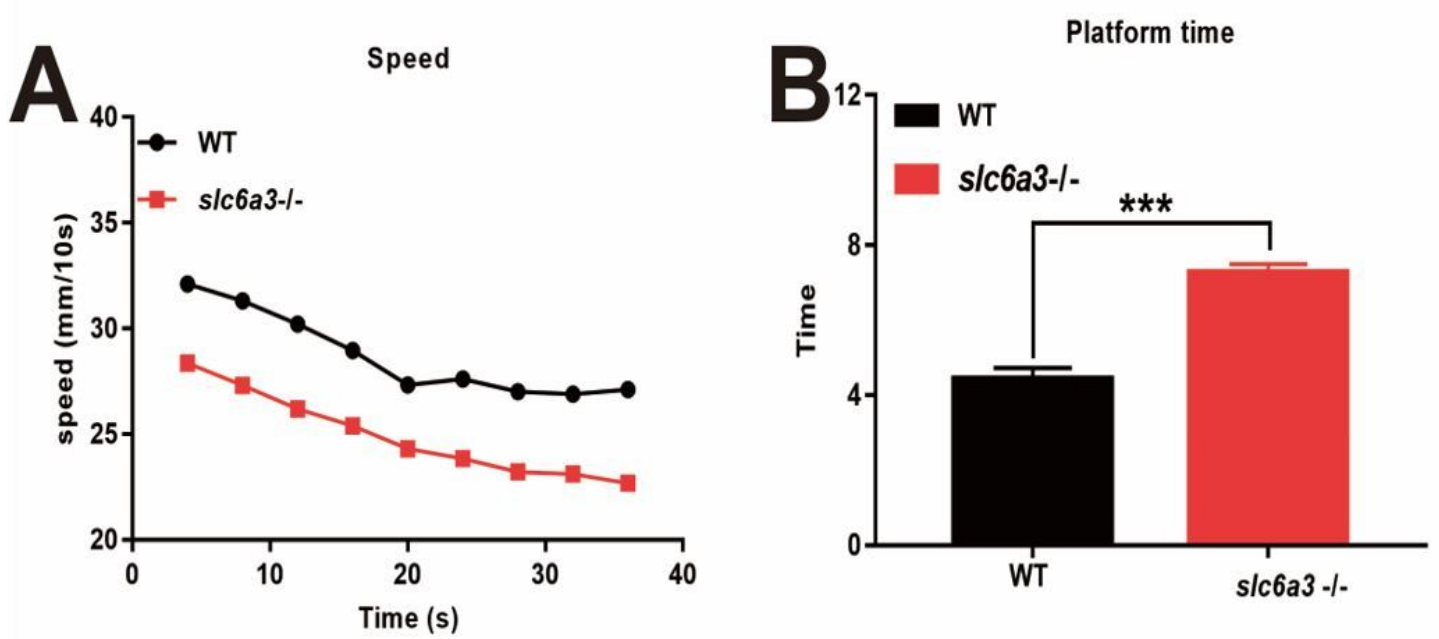


Figure 5

Learning and memory were deficient in *slc6a3* mutants. The light-dark response assay was used to examine learning and memory in zebrafish. (A) The average speed in wild-type (WT) and *slc6a3* mutants. (B) Time to reach the platform stage. Results are presented as mean \pm SD for independently performed triplicate experiments (n=24/group). Statistical significance was assessed via Student's t-test (**P < 0.01, ***P < 0.001)

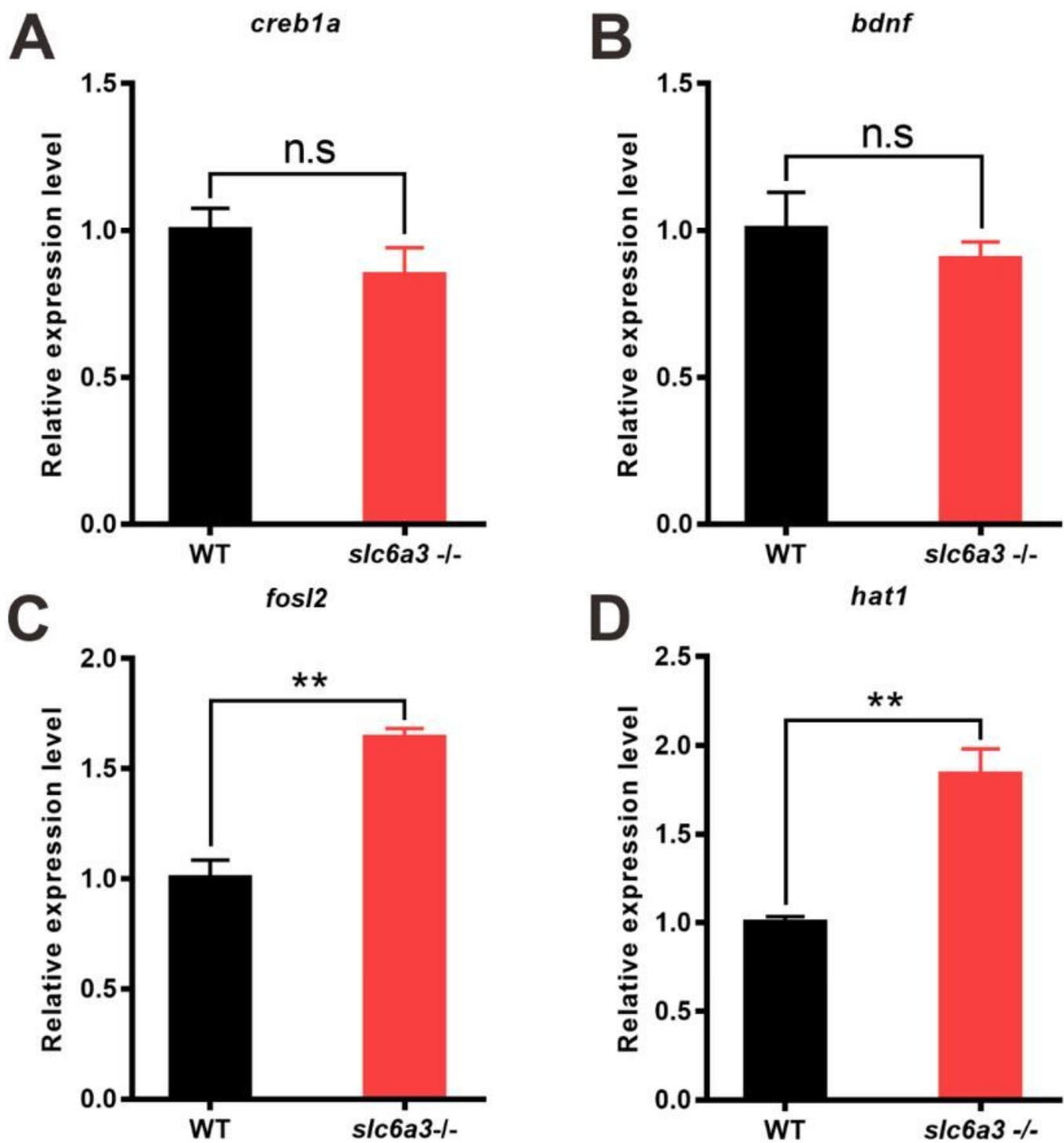


Figure 6

Alteration in expression patterns of learning and memory-related genes in *slc6a3* mutants. qRT-PCR analysis was used to investigate mRNA levels of learning/memory-related genes in wild-type (WT) and *slc6a3* mutants. The expression patterns of *creb1a* (A), *bdnf* (B), *fosl2* (C), and *hat1* (D) in WT and *slc6a3* mutants. Results are presented as mean \pm SD for independently performed triplicate experiments. Statistical significance was assessed via Student's t-test (n.s, not significant; **P < 0.01; ***P<0.001)