

Community-based model for the delivery of antiretroviral therapy in Cambodia: a quasi-experimental study protocol

Sovannary Tuot

KHANA Center for Population Health Research

Alvin Kuo Jing Teo

National University of Singapore

Kiesha Prem

London School of Hygiene & Tropical Medicine

Pheak Chhoun

African Population and Health Research Center

Chamroen Pall

KHANA Center for Population Health Research

Mengieng Ung

Singapore University of Technology and Design

Penh Sun Ly

National Center for HIV/AIDS, Dermatology and STD

Masamine Jimba

The University of Tokyo: Tokyo Daigaku

Siyan Yi (✉ siyan@doctor.com)

KHANA Center for Population Health Research <https://orcid.org/0000-0002-3045-5386>

Study protocol

Keywords: Cambodia, HIV, community, antiretroviral therapy, service delivery, implementation science

Posted Date: May 13th, 2021

DOI: <https://doi.org/10.21203/rs.3.rs-497277/v1>

License:  This work is licensed under a Creative Commons Attribution 4.0 International License.

[Read Full License](#)

Abstract

Background

Multi-month dispensing (MMD) is the mainstay mechanism for clinically stable people living with HIV in Cambodia to refill antiretroviral therapy (ART) every three to six months. However, less frequent ART dispensing through the community-based ART delivery (CAD) model could further reduce the clients' and health facilities' burden. While community-based services have been recognized as an integral component of HIV response in Cambodia, their role and effectiveness in ART delivery have yet to be systematically assessed. This study aims to evaluate the CAD model's effectiveness on the continuum of care and treatment outcomes for stable people living with HIV in Cambodia.

Methods

We will conduct this quasi-experimental study in 20 ART clinics across the capital city and 10 provinces between May 2021 and April 2023. Study sites were purposively selected based on the availability of implementing partners, the number of people living with HIV each clinic serves, and the accessibility of the clinics. In the intervention arm, approximately 2,000 stable people living with HIV will receive ART and services from the CAD model. Another 2000 stable people living with HIV in the control arm will receive MMD—a standard care model for stable people living with HIV. The primary outcomes will be retention in care, viral load suppression, and the healthcare providers' work burden. The secondary endpoints will include the model's cost-effectiveness, quality of life, mental health, social support, stigma, and discrimination. We will compare the outcome indicators within each arm at baseline, midline, and endline using descriptive and inferential statistics. We will evaluate the differences between the intervention and control arms using the difference-in-differences method. We will perform economic evaluations to determine if the intervention is cost-effective.

Discussion

This study will build the evidence base for future implementation and scale-up of CAD model in Cambodia and other similar settings. Furthermore, it will strengthen engagements with community stakeholders and further improve community mobilization, a vital pillar of the Cambodian HIV response.

Trial registration

ClinicalTrials.gov, NCT04766710. Registered 23 February 2021,

Contributions To The Literature

- While community-based antiretroviral therapy (ART) services in Cambodia have been acknowledged as an essential component of the national HIV response, the community-based antiretroviral therapy delivery (CAD) model has yet to be operationalized and systematically evaluated.

- This quasi-experimental study will evaluate the effectiveness of the CAD model in care retention, viral load suppression, quality of life, mental health, stigma, and discrimination faced by people living with HIV, and its impact on the healthcare providers' workload. The cost-effectiveness of the model will also be established.
- This study will build the evidence base for future implementation and scale-up of CAD in Cambodia and other similar settings.

Background

Cambodia has substantially reduced the prevalence of human immunodeficiency virus (HIV) in the general adult population aged 15–49 years from 1.7% in 1998 to 0.5% in 2019 (1, 2). Cambodia is also one of the three countries in the Asia-Pacific region to have achieved the UNAIDS 90-90-90 targets. More than 90% of people living with HIV receiving antiretroviral therapy (ART), and 80% had viral suppression (3). Despite the successes, there are persistent concerns regarding attrition from HIV testing and linkages to care and the retention in care, especially among members of the hidden populations in Cambodia (4). A recent systematic review and meta-analysis of studies in low- and middle-income countries reported that groups with vulnerable socioeconomic and clinical status and social support were at increased risk of loss to follow-up from ART programs (5). From the health systems perspective, care providence at a higher level was associated with a higher risk of attrition from the treatment cascade (5). Therefore, through decentralization of care and community involvement, differentiated ART delivery models that are contextualized could improve care retention and sustain treatment outcomes (6, 7).

In Cambodia, ART is primarily administered at 68 public ART clinics across 25 provinces (8). Clinics operated by several non-governmental organizations (NGOs) also complement the ART services. However, regular clinic runs and ARV refills posed a heavy resource burden on people living with HIV to remain optimally engaged in care (9). Besides, it also contributed significant workload on the health facilities and service providers to meet the demands of both stable people living with HIV and unstable people living with HIV, who required more frequent follow-ups (10). Hence, a differentiated care model would enable health providers to invest more time on unstable and complicated cases, thus improving overall service quality (10). An appointment-spacing and multi-month dispensing (MMD) model has been introduced to all ART clinics to increase service efficiency and decrease congestion by reducing clinical visits and refill appointments for stable people living with HIV (11). However, concerns regarding sub-optimal storage of antiretrovirals (ARVs), poor adherence, and missed appointments have emerged (12).

Community-based service delivery plays an integral part in the HIV response in many countries, including Cambodia (1, 13–17). A study conducted among people living with HIV in Cambodia expressed the need for community-based interventions to reduce stigma and discrimination among the general public and support people living with HIV to address these stressful situations (18). In 2016, the World Health Organization (WHO) recommended that stable people living with HIV can safely reduce the frequency of clinic visits by potentially receiving ART in community settings (13). Compared to hospital-based settings, decentralizing HIV treatment delivery and task shifting to include community health workers to dispense

ART was reported to improve retention across the HIV care cascade (19). Community-based ART delivery (CAD) models implemented outside Cambodia have reduced burdens for people living with HIV and the health systems, increased retention in care, and lowered overall service provider costs (20–24).

The two promising differentiated care models (i.e., MMD and CAD) have yet to be fully implemented and evaluated in Cambodia. Hence, little is understood on the operationality and effectiveness of the models in improving the care of people living with HIV. The primary aim of this study is to implement and evaluate the effectiveness of CAD compared to MMD on the care continuum and treatment outcomes for stable people living with HIV. We will also determine the acceptability, feasibility, barriers, and facilitators to implementing the CAD model in Cambodia. We hypothesize that a significantly higher proportion of participants in the intervention arm will report viral load suppression, retention in care, good ART adherence, improved quality of life and mental health, a better sense of social support, and lower stigma and discrimination. We also hypothesize that the CAD model will be more cost-effective compared to MMD (control arm). A significantly higher proportion of health care providers at the ART clinics in the intervention arm is also postulated to report reduced workload and lower burnout scores due to the implementation of CAD.

Methods

Design

We will conduct a quasi-experimental study (25,26) consisting of two arms—intervention and control for 24 months. Approximately 2,000 stable people living with HIV in the intervention arm will receive services from the CAD model. Another 2,000 people living with HIV in the control arm will receive MMD—a default care model for stable people living with HIV to refill ART every three to six months with a routine six-monthly clinical review. We will adopt an effectiveness-implementation hybrid design type II (27), where a mixed-methods approach will run in parallel to evaluate the effectiveness (quantitative) and implementation strategy (qualitative).

Settings

This study will include 10 ART clinics in Phnom Penh capital city and four provinces (Kampong Thom, Kampot, Koh Kong, and Takeo) for the intervention arm (Table 1). We will include 10 other ART clinics in Phnom Penh and five provinces (Kampong Cham, Pailin, Preah Sihanouk, Siem Reap, and Prey Veng) for the MMD control arm (Table 1). These sites have been purposively selected based on (i) the availability of implementing partners (Cambodian People Living with HIV Network, ARV User Association, and Partner in Compassion), (ii) the number of eligible people living with HIV for enrollment in the intervention and control arms, and (iv) advice from the national HIV program on the accessibility of the clinics.

Participants

We define stable people living with HIV as individuals who (i) are ≥ 15 years, (ii) have received first-line ART for at least one year, (iii) did not report ART-related adverse reactions or drug interactions requiring regular monitoring; (iv) do not have tuberculosis (presumptive/confirmed), other opportunistic infections, and are not taking any prophylactic treatment; (v) are not pregnant or breastfeeding (for women); (vi) have a good understanding of lifelong treatment and adherence to medication; and (vii) have achieved treatment success—two consecutive undetectable viral load and/or CD4 counts above 200 cells/mm³ (11,19,28). We will conduct in-depth interviews and focus group discussions with people living with HIV, representatives of the communities, government officials at different levels (community, health centers, operational districts, provincial health departments, and national programs), local and international NGOs, donors and other developmental partners in Cambodia to explore the acceptability, barriers, and facilitators to implementing the CAD model.

Sample size calculation

A target sample size of approximately 2,000 stable people living with HIV is required to provide at least 80% power to detect a 10% relative difference retention in care or maintenance of viral suppression. The sample size calculation was based on 10% attrition and conservative estimates of retention in care or viral-suppression maintenance: 50% and 55% maintenance of viral suppression in the MMD (control arm) and CAD (intervention arm), respectively. Findings from a recent randomized controlled trial in high- and medium-HIV-prevalence settings of people living with HIV with detectable viral load showed that CAD increased viral suppression compared to the control group (74% vs. 63%, RR 1.18, 95% CI 1.07–1.29). Under similar scenarios, our proposed study's power with 2,000 participants in each arm will be at least 90%.

Recruitment

We will develop a list of participating ART clinics in consultation with the Database Management Unit of the National Center for HIV/AIDS, Dermatology, and STD (NCHADS) and the other implementing partners. Potential people living with HIV will be jointly identified by the study team and clinicians on-site based on the eligibility criteria. We will seek consent from eligible people living with HIV and recruit them into the study. To measure the impact of CAD on the work burden of healthcare providers, we will recruit all staff working for the HIV program at the intervention and control sites—nurses, counselors, laboratory technicians, pharmacists, and clinicians. For the qualitative study, we will purposively recruit interviewees at the national level and intervention sites for diverse views.

Intervention: CAD model

People living with HIV in the intervention arm will receive antiretrovirals (ARVs) from the community action workers (CAWs) through the CAD model. We will recruit people living with HIV in the community to be CAWs. Training will be provided by the ART clinics and implementing partners on ART dispensing, drug storage, vital signs assessment and documentation, HIV education and counseling, ART adherence and

measurement, referral systems, and aspects such as mental health, stigma and discrimination, and sexual and reproductive health. CAWs will obtain pre-packaged ARVs once a month from the attached ART clinic and dispense them to people living with HIV in the community. CAWs will conduct group follow-up sessions monthly to record vital signs, monitor adherence, and provide health education and counseling. Those who are unwell will be referred to the ART clinic. CAWs will also submit the relevant records to the ART clinic at their next visit. Trained clinicians will conduct ARV regimen and HIV clinical management in the ART clinics. People living with HIV in the intervention arm will visit the ART clinics for routine clinical review every six months and on an ad-hoc basis if medical attention is required. Clinical management of people living with HIV will be done by trained personnel at the ART clinic following the national guideline (28). The study flowchart is presented in Figure 1.

Control: MMD model

People living with HIV in the control arm will visit ART clinics and collect their ARVs from the facility-based service providers through the MMD model, the standard care for stable people living with HIV. People living with HIV will refill their prescriptions at the ART clinic every three to six months. The exact frequency might differ between individuals, decided at the discretion of individual ART clinics. People living with HIV will visit the ART clinic on an ad-hoc basis for consultation if needed. They will otherwise undergo routine clinical review every six months. Clinical management of people living with HIV will be done by trained personnel at the ART clinic following the national guideline (28). The study flowchart is presented in Figure 1.

Outcome measures

We present the conceptual framework reflecting the outcome measures and their effects on the continuum of care in Figure 2. Our primary outcomes will include (i) viral load suppression, (ii) retention in care, and (iii) adherence to ART. Viral load suppression is defined as at least 90% of the study participants in the intervention arm will have a viral load of <1000 RNA copies/mL at the end of the intervention period. We define care retention as the proportion of people living with HIV who will remain in HIV care and treatment 12 and 24 months after study commencement. Treatment adherence will be self-reported, and we will present the proportion of people living with HIV with good adherence to ART based on standard cut-offs.

We will also assess secondary outcomes, including (i) the impact of CAD on the work burden of healthcare providers at the ART sites, (ii) cost-effectiveness of this model and its impact on (iii) the quality of life, (iv) mental health, (v) social support, and (vi) stigma and discrimination faced by people living with HIV in the community. We will report the time and volume of stable people living with HIV seen at the ART sites as a measure of the workload of healthcare providers in HIV care delivery. We will present quality of life, mental health, social support, stigma and discrimination, and workload (burnout) as scores measured using validated tools described in the section below. We will perform an economic evaluation to determine if the intervention is cost-effective. We will also determine the acceptability, feasibility, barriers, and facilitators to implementing the CAD model in Cambodia using the qualitative method.

Data collection

All people living with HIV will be interviewed face-to-face by trained data collection teams using structured questionnaires. We will interview all participants in the intervention and control arms at baseline (0 months), midline (at 12 months of the intervention), and endline (at 24 months of the intervention). We will collect qualitative data in private locations using semi-structured interview guides. The data collection timelines for quantitative surveys and qualitative in-depth interviews and focus group discussions are illustrated in Figure 3.

Variables and measurements

We will collect information on sociodemographic (age, sex at birth and gender, membership of key population groups, income, residence, education, family, and dependency) and HIV treatment history and health status (duration of taking ART, transportation mode, relationship, and satisfaction with health care workers). We will adapt questionnaires previously implemented by NCHADS to measure medication adherence and retention in care and treatment (28,29). Viral load will be obtained from medical records at the attached ART clinics.

We will measure depressive symptoms using the Center for Epidemiologic Studies Depression Scale (CES-D) (18), quality of life using the WHO Quality of Life BREF (WHOQOL-BREF) for people living with HIV and EQ-5D-5L (30–32) and stigma and discrimination using the People Living with HIV Stigma Index (18). We will also measure self-efficacy and levels of social support using the Perceived Self-Efficacy for Receiving Antiretroviral Therapy Scale (PSEARTS) (33–35) and Berlin Social Support Scale (BSSS) (34,36,37), respectively. For the economic evaluation, we will collect direct and indirect costs for follow-up care and ARV refills. We will assess healthcare providers' workload at ART clinics using two different measures. First, we will evaluate burnout (extent of physical and psychological fatigue and exhaustion) using the Maslach Burnout Inventory (MBI) – Human Services Survey for Medical Personnel (38). Second, we will measure the number of people living with HIV (both stable and unstable) served per day and week and the time spent per people living with HIV at the different service points in the clinic. For the qualitative assessment, we will explore the perception of people living with HIV, HIV service providers, and other key stakeholders on the advantages and disadvantages, acceptability, feasibility, and sustainability of CAD in the HIV continuum of care.

Data management

We will collect and manage data using REDCap (39,40). Data coding, quality control, and data entry will be done. We will enter all data into the database within one week of collection. Subsequently, we will export the database into Microsoft Excel (Microsoft Corp., Redmond, Washington, USA) to check for consistency periodically. All questionnaires will be checked for errors by the team leaders, and necessary corrections will be made before data entry and analyses.

Data analyses

We will compare the characteristics of the participants in the intervention and control arms using descriptive statistics. In the presence of significant differences, we will adjust for them in the subsequent between-group (i.e., intervention vs. control) analyses. Key outcome indicators will be compared using inferential statistics such as Chi-square tests for categorical variables and Student's *t*-test for continuous variables. To evaluate the effectiveness of the CAD model intervention, we will compare the outcome indicators at baseline, midline, and endline within and between the intervention and control arm using the difference-in-differences method (41). We will apply multivariable regression analyses using mixed models, logistic and Cox regression, considering repeated measurements design and the nature of the response variables. Statistical analyses will be performed in STATA (Stata Corp LP, Texas, United States of America) and R (R Foundation for Statistical Computing, Vienna, Austria). For qualitative data, we will transcribe audio recordings verbatim, and the transcripts will be coded using NVIVO (QSR International). Content analyses will be performed to identify emerging categories, themes, and common and divergent patterns pertinent to the study's objectives.

Ethical consideration

We will inform all participants clearly about the study's objectives and the participation risks and benefits before enrolling them in the study. If a participant cannot read or write, the CAWs or data collectors will read the information sheet to the participant during the consent-taking process. Participants will be able to withdraw from or discontinue the study at any time. All participant records—written, recorded, and transcribed data—will be stored securely. We will assign coded identifiers to participant names (with a master list stored separately). Participants will receive a token equivalent to US\$3 for their time and transportation compensation. It is anticipated that the study results will benefit people living with HIV and their communities, and the harm to the participants will be minimal.

Discussion

As a country with a majority of people living with HIV being aware of their status, undergoing treatment, and achieving viral suppression (3), it is essential to ensure that people living with HIV remain in care and virally suppressed. Hence, a decentralized and differentiated model catering to stable people living with HIV ought to be prioritized. This study seeks to operationalize CAD and examine its effects on the care continuum and treatment outcomes for stable people living with HIV in Cambodia, hinging on the successes of community-based service delivery mechanisms (21–24). We hypothesize that the CAD model will lead to better viral suppression, ART adherence, care retention, and improvement in the quality of life, mental health, and social support of people living with HIV. We also theorize that the community-based model will reduce healthcare providers' workload at the ART clinics and stigma and discrimination among people living with HIV. The model is also postulated to be cost-effective, measured in terms of dollar spent per additional quality-adjusted life-years gained.

A limitation of our approach is the lack of randomization. Hence, we cannot definitively account for unmeasured and residual confounders. Cambodia's Ministry of Health operates the ART clinics under

support from the Global Fund to Fight AIDS, Tuberculosis, and Malaria, the country's largest funder of HIV programs. The Global Fund works with the NCHADS and other sub-sub implementers to support HIV treatment, care, and support across all 68 ART sites in the country. The programs include the provision of HIV counseling and education session to people living with HIV, facilitation of access to ART services, and the provision of living support to people living with HIV. All 20 ART clinics selected for this study receive a similar level of support from the Global Fund-supported programs. Therefore, these activities will be carried out in the backdrop of this evaluation.

Potential contamination confers by the HIV program supported by the Global Fund could bias the intervention effect towards null and may lead to a type 2 error. However, the contamination is likely non-differential between the intervention and control sites. Study data could also be subjected to information bias as data will be collected by interviewers, and several outcomes will be based on respondents' recall and self-report. Data collectors in both arms will be trained in a standardized manner to minimize information bias. We will also ensure that the participants, data collectors, and implementation teams will be blinded to the study's main hypotheses.

This project complements the national HIV program's efforts to meet and sustain targets to end HIV and AIDS in Cambodia by ensuring that people living with HIV stay on treatment and their viral load is suppressed. Through community mobilization, the differentiated ART delivery model could also allow the apportionment of resources to intensify case finding and ensure that more people living with HIV would transition to a stable stage. Lessons learned from this study will be documented and disseminated to different stakeholders. Upon completion of this study, the findings will inform the implementation and enable scale-up of CAD in other localities in Cambodia and other similar settings.

Abbreviations

ART: antiretroviral therapy; ARV: antiretroviral; BSSS: Berlin Social Support Scale; CAD: community-based ART delivery; CAW: community action workers; CES-D: Center for Epidemiologic Studies Depression Scale; HIV: human immunodeficiency virus; MBI: Maslach Burnout Inventory; MMD: multi-month dispensing; NCHADS: National Center for HIV/AIDS, Dermatology, and STD; NGO: non-governmental organizations; PSEARTS: Perceived Self-Efficacy for Receiving Antiretroviral Therapy Scale; WHO: World Health Organization; WHOQOL-BREF: WHO Quality of Life BREF.

Declarations

Ethics approval and consent to participate

The National Ethics Committee for Health Research of the Ministry of Health, Cambodia approved this study (Ref. 258/NECHR). We will obtain written consent from all participants before enrolling them in the study.

Consent for publication

Not applicable.

Availability of data and materials

Not applicable.

Competing interests

The authors declare that they have no competing interests.

Funding

This manuscript is made possible by the generous support of L'Initiative through Expertise France (Grant No. 19-SB0765). The funder has no role in the study design, project implementation and evaluation, and manuscript writing.

Authors' contributions

ST and SY obtained the research grant. ST, AKJT, KP, and SY conceptualized and designed the study and developed the research protocol. ST, PC, CP, and SY will manage the project implementation, monitoring, and evaluation. AKJT, KP, MU, PSL, and MJ will provide technical support for the project implementation, monitoring, and evaluation. All authors contributed to the writing and approved the final manuscript.

Acknowledgements

The authors would like to acknowledge the National Center for HIV/AIDS, Dermatology, and STD, the municipality and provincial health departments, ART clinics, and implementing partners for their support in the study design, implementation, and evaluation.

References

1. National Center for HIV/AIDS, Dermatology and STD. Strategic Plan for HIV/AIDS and STI Prevention and Control in the Health Sector 2016-2020 [Internet]. 2016. Available from: https://www.nchads.org/wp-content/uploads/2021/02/SP-for-hiv_aids-and-sti_prevention_n_control_in_Health-Sector_en.pdf
2. National AIDS Authority. The Fifth National Strategic Plan for a Comprehensive, Multi-Sectoral Response to HIV/AIDS (2019-2023) [Internet]. 2019. Available from: <http://www.naaa.gov.kh/userfiles/image/download/160438975855.pdf>
3. Joint United Nations Programme on HIV/AIDS. UNAIDS DATA 2020 [Internet]. 2020. Available from: https://www.unaids.org/sites/default/files/media_asset/2020_aids-data-book_en.pdf
4. Ministry of Health. Health Strategic Plan 2016-2020 [Internet]. Phnom Penh; 2016. Available from: http://www.wpro.who.int/health_services/cambodia_nationalhealthplan.pdf

5. Frijters EM, Hermans LE, Wensing AMJ, Devillé WLJM, Tempelman HA, De Wit JBF. Risk factors for loss to follow-up from antiretroviral therapy programmes in low-income and middle-income countries. *AIDS*. 2020;34(9):1261–88.
6. World Health Organization. Task shifting: rational redistribution of tasks among health workforce teams. Geneva: World Health Organization; 2008.
7. Rustagi AS, Manjate RM, Gloyd S, John-Stewart G, Micek M, Gimbel S, et al. Perspectives of key stakeholders regarding task shifting of care for HIV patients in Mozambique: A qualitative interview-based study with Ministry of Health leaders, clinicians, and donors. *Human Resource Health*. 2015;13(1):1–9.
8. National Center for HIV/AIDS, Dermatology and STD. Summary Quarterly Report on HIV-AIDS and HCV-HIV Co-infection [Internet]. 2019. Available from: <https://www.nchads.org/wp-content/uploads/2020/11/1.-Summary-Quarterly-report-on-HIV-AIDS-and-HCV-HIV-Co-infection.pdf>
9. Chhim K, Mburu G, Tuot S, Sopha R, Khol V, Chhoun P, et al. Factors associated with viral non-suppression among adolescents living with HIV in Cambodia: A cross-sectional study. *AIDS Res Ther*. 2018;15(1).
10. Rivers Patrick A, Glover Sandra H. Health care competition, strategic mission, and patient satisfaction: Research Model and Propositions. *Heal (San Fr)*. 2010;22(6):1–14.
11. National Center for HIV/AIDS, Dermatology and STD. Standard Operating Procedure on Appointment-spacing and Multi-Month Dispensing (MMD) in Cambodia [Internet]. Phnom Penh: National Center for HIV/AIDS, Dermatology and STD; 2020. Available from: <https://www.nchads.org/wp-content/uploads/2020/12/MMS-SOP-ENG.pdf>
12. Angkor Research. Differentiated Model of Care: Survey of ART Staff Perceptions about Multi-Month Dispensing (MMD). Phnom Penh: Angkor Research; 2020.
13. UNAIDS – the Joint United Nations Programme on HIV/AIDS. Community-Based Antiretroviral Therapy Delivery. Geneva: UNAIDS; 2015. Available from: https://www.unaids.org/sites/default/files/media_asset/20150420_MSF_UNAIDS_JC2707.pdf
14. United States Agency for International Development (USAID). Guide to Onsite Preparation for Differentiated HIV Care and Treatment Services Using the Community Client Led ART Delivery Model: Experience from Seven Public Health Facilities in Uganda. Washington DC: USAID; 2017; Available from: https://pdf.usaid.gov/pdf_docs/PA00TBZ6.pdf
15. The AIDS Support Organisation (TASO). Community Client-Led ART Delivery Model (CCLAD). Kampala: TASO; 2016. Available from: <https://differentiatedservicedelivery.org/Portals/0/adam/Content/eWrU1crH-k-UFo7QK2VeTA/File/CCLAD ART MODEL.pdf>
16. KHANA. Community-Based Antiretroviral Therapy Delivery Implementation Guide. Phnom Penh: KHANA; 2020.
17. National AIDS Authority (NAA). The National Strategic Plan for Comprehensive & Multi-Sectoral Response to HIV/AIDS III 2011-2015. Phnom Penh: NAA; 2010; Available from:

<http://www.naaa.gov.kh/userfiles/image/download/1393768028371.pdf>

18. Yi S, Chhoun P, Suong S, Thin K, Brody C, Tuot S. AIDS-related stigma and mental disorders among people living with HIV: A cross-sectional study in Cambodia. *PLoS One*. 2015;10(3).
19. World Health Organization (WHO). March 2014 supplement to the 2013 consolidated guideline on Use of Antiretroviral Drugs for Treating and Preventing HIV Infection. March 2014 Suppl [Internet]. Geneva: WHO; 2014;(March). Available from: http://www.who.int/hiv/pub/guidelines/arv2013/arvs2013supplement_march2014/en/
20. Decroo T, Telfer B, Dores C Das, White RA, Santos N Dos, Mkwamba A, et al. Effect of Community ART Groups on retention-in-care among patients on ART in Tete Province, Mozambique: A cohort study. *BMJ Open*. 2017;7(8):1–9.
21. Decroo T, Koole O, Remartinez D, Santos N dos, Dezebembro S, Mariano Jofrisse et al. Four-year retention and risk factors for attrition among members of community ART groups in Tete, Mozambique. *Trop Med Int Health*. 2014 May;19(5):514–21.
22. Okoboi S, Ding E, Persuad S, Wangisi J, Birungi J, Shurgold S, et al. Community-based ART distribution system can effectively facilitate long-term program retention and low-rates of death and virologic failure in rural Uganda. *AIDS Res Ther*. 2015;12(1):1–9.
23. Gupta AK, Dabla V, Joshi BC, Chakraborty S, Baishya JJ, Gupta A. Challenges in Retention of Patients in Continuum of HIV-Care in Delhi— Experience of a Decade & Way Ahead. *World J AIDS*. 2014;04(04):387–95.
24. Faturiyele IO, Appolinare T, Ngorima-Mabhena N, Fatti G, Tshabalala I, Tukei VJ, et al. Outcomes of community-based differentiated models of multi-month dispensing of antiretroviral medication among stable HIV-infected patients in Lesotho: A cluster randomised non-inferiority trial protocol. *BMC Public Health*. 2018;18(1):1–9.
25. Harris AD, Bradham DD, Baumgarten M, Zuckerman IH, Fink JC, Perencevich EN. The use and interpretation of quasi-experimental studies in infectious diseases. *Clin Infect Dis*. 2004;38(11):1586–91.
26. White H, Sabarwal S. *Quasi-experimental Design and Methods, Methodological Briefs: Impact Evaluation*. New York: UNICEF; 2014.
27. Curran GM, Bauer M, Mittman B, Pyne JM, Stetler C. Effectiveness-implementation Hybrid Designs: Combining Elements of Clinical Effectiveness and Implementation Research to Enhance Public Health Impact. *Med Care*. 2012;50(3):217–226.
28. National Center for HIV/AIDS, Dermatology and STD (NCHADS). *Guideline to Enhance ART Adherence, Viral Load Monitoring, and Regimen Optimization to Improve HIV viral Suppression among PLHIV on ART* [Internet]. Phnom Penh: NCHADS; 2017. Available from: <https://www.nchads.org/wp-content/uploads/2020/12/Third90-EAC-eng.pdf>
29. Steel G, Nwokike J, Joshi MP. *Development of a Multi-Method Tool to Measure ART Adherence in Resource-Constrained Settings: The South Africa Experience*. Submitted to US Agency Int Dev by

- Ration Pharm Manag Plus Program Arlington, VA Manag Sci Heal [Internet]. 2007;1–61. Available from: http://pdf.usaid.gov/pdf_docs/Pnadc153.pdf
30. Herdman M, Gudex C, Lloyd A, Janssen M, Kind P, Parkin D, et al. Development and preliminary testing of the new five-level version of EQ-5D (EQ-5D-5L). *Qual Life Res.* 2011;20(10):1727–36.
 31. Ibrahim AA, Akindele MO, Ganiyu SO, Kaka B, Abdullahi BB, Sulaiman SK, et al. The Hausa 12-item short-form health survey (SF-12): Translation, cross-cultural adaptation and validation in mixed urban and rural Nigerian populations with chronic low back pain. *PLoS One.* 2020;15(5):1–19.
 32. Yi S, Chhoun P, Brant S, Kita K, Suong S, Thin K, et al. The Sustainable Action against HIV and AIDS in Communities (SAHACOM): Impacts on health and quality of life of people living with HIV in Cambodia. *Glob J Med Public Health.* 2014;3(5):1–14.
 33. Mallory O. Johnson, Torsten B. Neilands, Samantha Dilworth, Stephen F. Morin, Robert H. Remien and MAC. The role of self-efficacy in HIV treatment adherence: validation of the HIV Treatment Adherence Self-Efficacy Scale (HIV-ASES). *J Behav Med.* 2007; 30(5),359–70.
 34. Warapornmongkholkul A, Howteerakul N, Suwannapong N, Soparattanapaisarn N. Self-efficacy, social support, and quality of life among primary family-member caregivers of patients with cancer in Thailand. *J Heal Res.* 2018;32(2):111–22.
 35. Adefolalu A, Nkosi Z, Olorunju S, Masemola P. Self-efficacy, medication beliefs and adherence to antiretroviral therapy by patients attending a health facility in Pretoria. *South African Fam Pract.* 2014;56(5):281–5.
 36. Schwarzer, R., & Schulz U. Berlin social support scales (BSSS). Measurement instrument database for the social science. 2013.
 37. Bhatta DN, Liabsuetrakul T. Efficacy of a Social Self-Value Empowerment Intervention to Improve Quality of Life of HIV Infected People Receiving Antiretroviral Treatment in Nepal: A Randomized Controlled Trial. *AIDS Behav.* 2017;21(6):1620–31.
 38. Maslach C, Schaufeli WB, Leiter MP. Job Burnout. 2001;397–422.
 39. Harris PA, Taylor R, Thielke R, Payne J, Gonzalez N, Conde JG. Research electronic data capture (REDCap)-A metadata-driven methodology and workflow process for providing translational research informatics support. *J Biomed Inform.* 2009;42(2):377–81.
 40. Harris PA, Taylor R, Minor BL, Elliott V, Fernandez M, O’Neal L, et al. The REDCap consortium: Building an international community of software platform partners. *J Biomed Inform.* 2019;95:103208.
 41. Wing C, Simon K, Bello-Gomez RA. Designing Difference in Difference Studies: Best Practices for Public Health Policy Research. *Annu Rev Public Health.* 2018;39:453–69.

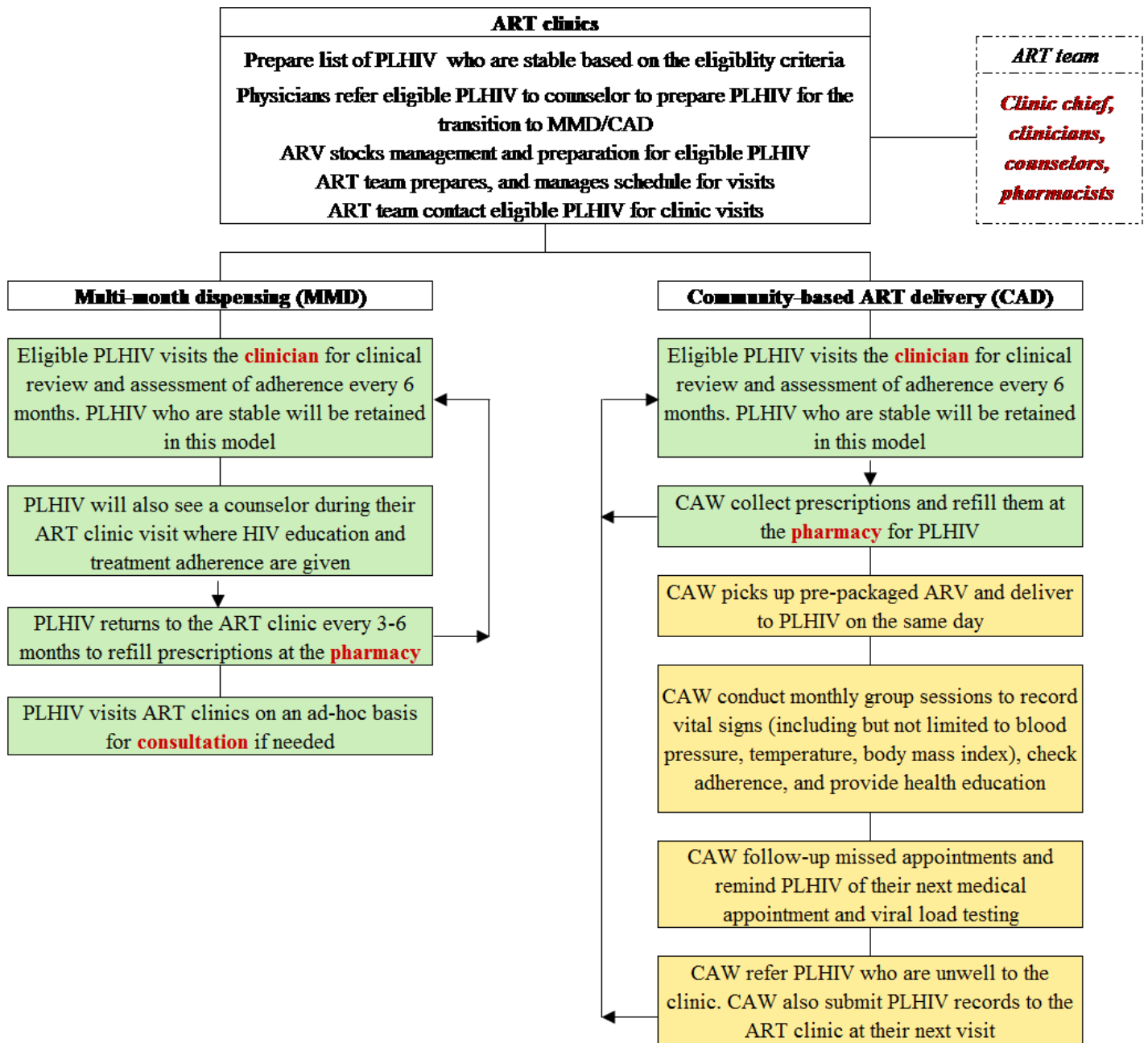
Tables

Table 1 Study sites for the quasi-experimental study to evaluate the CAD model

Intervention sites			Control sites		
Province	ART clinic	Setting	Province	ART clinic	Setting
Kampot	Kampot Hospital	Urban	Kampong Cham	Kampong Cham Hospital	Urban
Kampot	Kampong Trach Hospital	Rural	Kampong Cham	Cheung Prey Hospital	Rural
Koh Kong	Smach Meanchey Hospital	Urban	Pailin	Pailin Hospital	Urban
Koh Kong	Sre Ambil Hospital	Rural	Preah Sihanouk	Preach Sihanouk Hospital	Urban
Phnom Penh	Mean Chey Hospital	Urban	Phnom Penh	Chhouk Sar I Clinic	Urban
Phnom Penh	Pochintong Hospital	Urban	Phnom Penh	Sam Dach Ov Hospital	Urban
Kampong Thom	Kampong Thom Hospital	Urban	Siem Reap	Siem Reap Hospital	Urban
Kampong Thom	Baray Santok Hospital	Rural	Siem Reap	Soth Nikum Hospital	Rural
Takeo	Takeo Hospital	Urban	Prey Veng	Prey Veng Hospital	Urban
Takeo	Kirivong Hospital	Rural	Prey Veng	Neak Loeung Hospital	Rural

ART, antiretroviral therapy; CAD, community ART delivery.

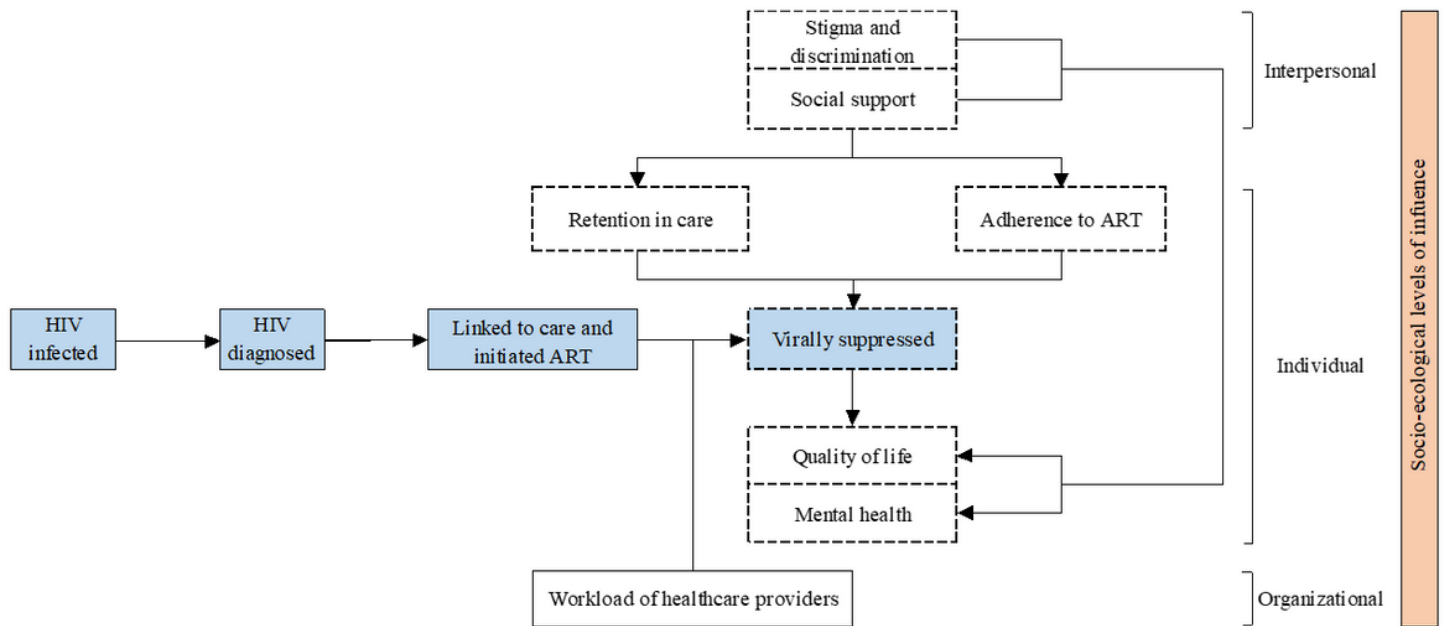
Figures



PLHIV; people living with HIV, ARV; antiretrovirals, ART; antiretroviral therapy, CAW; community action workers

Figure 1

Study flowchart in the intervention (community ART delivery) and control arms (multi-month dispensing model) Notes: The department/profiles in red represent the workforce required at the ART clinics to facilitate and implement MMD and CAD. Boxes in green represent activities that will occur in the ART clinics. Boxes in yellow represent activities that will occur in the community.



HIV; human immunodeficiency virus, ART; antiretroviral therapy

Figure 2

Conceptual framework reflecting the outcome measures and their effects on the continuum of care Note: The framework outlines the relationship between the outcome measures (boxed in dotted line) and the HIV continuum of care (blue). The right-most panel (orange) represents the outcome measures in the context of the socioecological levels of influence.

	Year 1				Year 2				Year 3
	Q1	Q2	Q3	Q4	Q1	Q2	Q3	Q4	Q1
	Intervention: Community-based ART delivery (CAD)								
	Control: Multi-month dispensing (MMD)								
<i>Survey/interview populations</i>									
PLHIV	Baseline survey*				Midline survey*				Endline survey*
HCW	Baseline survey†				Midline survey†				Endline survey†
PLHIV and HCP					Qualitative IDI and FGD				
	Costing and economic evaluation								

PLHIV; people living with HIV, HCP; healthcare providers, IDI; in-depth interviews, FGD; focus group discussions

*Key variables: socio-demographic, viral load, treatment adherence, self-efficacy, mental health, quality of life, stigma and discrimination

†Socio-demographic and workload of health providers

Figure 3

Timelines and data collection activities for the quasi-experimental study to evaluate the community ART model