

# Proximal Junctional Kyphosis in Lenke 5 AIS Patients: The Important Factor of Pelvic Incidence

**Quan Zhou**

Sichuan University West China Hospital

**Bowen Hu**

Sichuan University West China Hospital

**Xi Yang** (✉ [formosa88@163.com](mailto:formosa88@163.com))

Sichuan University West China Hospital

**Yueming Song**

Sichuan University West China Hospital

**Limin Liu**

Sichuan University West China Hospital

**Linnan Wang**

Sichuan University West China Hospital

**Lei Wang**

Sichuan University West China Hospital

**Chunguang Zhou**

Sichuan University West China Hospital

**Zhongjie Zhou**

Sichuan University West China Hospital

**Peng Xiu**

Sichuan University West China Hospital

**Liang Wang**

Sichuan University West China Hospital

---

## Research article

**Keywords:** Proximal junctional kyphosis, adolescent idiopathic scoliosis, thoracolumbar, lumbar curve, posterior surgery, pelvic incidence, sagittal alignment

**Posted Date:** September 21st, 2020

**DOI:** <https://doi.org/10.21203/rs.3.rs-73074/v1>

**License:** © ⓘ This work is licensed under a Creative Commons Attribution 4.0 International License.

[Read Full License](#)

---

**Version of Record:** A version of this preprint was published on February 15th, 2021. See the published version at <https://doi.org/10.1186/s12891-021-04052-8>.

# Abstract

## Background

The purpose of the study was to investigate whether pelvic incidence (PI) will affect the occurrence of PJK in Lenke 5 AIS patients after correction surgery and try to explore a better surgical scheme based on PI.

## Methods

Lenke 5C AIS patients that underwent correction surgery for thoracolumbar/lumbar (TL/L) curves with a minimum of a 2-year follow-up were identified. Demographic and radiographic data were collected preoperatively, postoperatively, and at the final follow-up. The comparison between the PJK and the Non-PJK group was conducted and the subgroup analysis was performed based on the preoperative value of PI to investigate the potential mechanism of PJK.

## Results

The mean preoperative Cobb angle of the TL/L curve was  $53.4^{\circ} \pm 8.6$ . At the final follow-up, the mean TL/L Cobb angle was drastically decreased to  $7.3^{\circ} \pm 6.8$  ( $P < 0.001$ ). The incidence of PJK was 21.9% (7/32) in the low PI group ( $PI < 45^{\circ}$ ) and 15.8% (6/38) in the high PI group ( $PI \geq 45^{\circ}$ ), and there was no statistical difference between the two groups ( $\chi^2 = 0.425$ ,  $P > 0.05$ ). The UIV of the PJK subgroup was much closer to the cranial level than the Non-PJK subgroup for the high PI group (PJK vs. Non-PJK:  $6.0 \pm 1.3$  vs.  $8.6 \pm 1.6$ ,  $P = 0.003$ ). There was no significant difference in the selection of LIV between the two groups.

## Conclusions

The incidence of PJK in Lenke 5 AIS was 18.6%. Our results found no difference in the incidence of PJK according to PI, but the mechanisms of PJK may be different for different PI values. The design of surgical plans for Lenke 5 AIS patients should take individual PI into account to decrease the incidence of PJK.

## Background

Sagittal alignment is increasingly recognized as a critical parameter in the setting of spinal deformity [1]. For adolescent idiopathic scoliosis (AIS) patients, correction surgery is recommended to achieve a well-balanced spine on the coronal and sagittal alignment while improving appearance and quality of life. It is clear now that a sagittal imbalance has more disastrous influence on the surgical outcome than a coronal imbalance. Proximal junctional kyphosis (PJK), which is defined as the final proximal junctional sagittal Cobb angle (PJA) between the lower endplate of the uppermost instrumented vertebra (UIV) and the upper endplate of UIV+2, which is  $\geq 10^{\circ}$  and at least  $10^{\circ}$  greater than the preoperative measurement [2], is one of the most common sagittal malalignment complications in AIS patients after surgery. The

prevalence of the PJK after posterior surgery in AIS patients was reported as being between 7%-46% in variation on different surgical methods or instrument types [3-5].

To date, a large number of studies have focused on PJK and divided the etiology into three categories: patient-specific, surgical, and radiographic risk factors. The patient-specific factors included gender and BMI, while the surgical factors included thoracoplasty and instrument types [6, 7]. Besides, some studies documented that the PJK was closely related to some sagittal alignment parameters, such as preoperative thoracic kyphosis (TK)  $>40^\circ$  [5, 8], PJA change  $>5^\circ$  [9] or substantial reduction of TK [8]. PJK should be considered as being the result of the comprehensive effect of multiple factors rather than a single factor. However, the mechanism of PJK is still not clear, and these risk factors are also controversial.

Previous studies have reported several preoperative or postoperative sagittal parameters, such as larger preoperative TK, larger postoperative LL, which are associated with PJK. Additionally, significant correlations between spinal sagittal parameters and the morphological pelvic incidence (PI) have been proved and pelvic parameters are the cornerstone in sagittal alignment regulation [10]. PI is described as a morphological parameter, not affected by the posture or the pelvis position and thought to remain constant until roughly 10 years of age [1, 11, 12]. The presence of abnormal PI is a risk factor for sagittal malalignment following scoliosis fusion surgery, which may lead to decreased quality of life and increased severity of symptoms [13, 14]. Christopher et al. [15] demonstrated that low PI was associated with increased PJK when using growth rod in early-onset scoliosis (EOS) patients. However, Emmanuelle et al. [3] found that patients with high PI were more at risk of PJK. Does the value of PI affect the occurrence of PJK after AIS correction surgery? To the best of our knowledge, the clinical outcome, natural course and compensatory mechanism of PJK in AIS patients are still yet to be fully understood. The purpose of the study is to investigate the potential mechanism of PJK in Lenke 5 AIS patients after correction surgery and to make better surgical plans based on PI.

## Materials And Methods

### Patients population

This retrospective study was conducted after the approval of the institutional review board (IRB). The data of Lenke 5C AIS patients, operated between January 2010 and June 2017 for thoracolumbar/lumbar (TL/L) curves, were retrospectively analyzed. The inclusion criteria were as follows: (1) a diagnosis of Lenke 5C AIS and Cobb angle of the TL/L curve of more than  $40^\circ$ , (2) age: between 12 and 20 years, (3) patients treated with one-stage posterior all-pedicle screw instrumentation without adjuvant anterior release, (4) a minimum of a 2-year follow-up. Therefore, patients who had previous spine surgery, but without a minimum of a 2-year follow-up were excluded from this study. And Clinical examination and investigations were done to rule out any other cause of scoliosis.

### Radiographic Assessment

Standing full-length posteroanterior (PA), lateral radiographs by the multipurpose Digital R/F System (Soniavision Safire 17; Shimadzu Corp., Kyoto, Japan) were performed routinely before surgery, immediately after the operation and at each follow-up time point. All radiological parameters were measured by 3 attending spinal surgeons who were not involved in the surgery, and the average value was adopted.

The Cobb angle of the main TL/L coronal curve was measured on the standing full-length radiographs. We presumed that the Cobb angle to be reliably measured needed to be within 5°. The preoperative grade of the Risser sign was also recorded and evaluated. On the lateral radiographs, the following sagittal parameters were measured: pelvic incidence (PI), sacral slope (SS), pelvic tilt (PT), lumbar lordosis (LL), thoracic kyphosis (TK, Cobb angle between T5-T12), global TK (GTK, Cobb angle between T1-T12), sagittal vertical axis (SVA), PI-LL (calculated by subtracting LL from PI), thoracolumbar junction kyphosis angle (TLK, Cobb angle between T10-L2), PJA.

PI, SS, and PT were measured using previously described standard methods [16]. The LL was the angle between the upper endplate of L1 and the superior endplate of S1. The TK was the angle from the superior endplate of T5 and the inferior endplate of T12, and GTK was the angle from the superior endplate of T1 and the inferior endplate of T12. SVA was the distance between the C7 plumb line and the posterosuperior corner of S1. A positive value indicated that the C7 plumb line was anterior to the posterior sacral corner, while a negative value indicated that the C7 plumb line was posterior to the posterior sacral corner. The PJA was measured as the angle between the inferior endplate of the UIV to the superior endplate of UIV+2. For LL and TK, the positive means lordotic and negative means kyphotic. We recorded the UIV as a specific number. For example, UIV=T9 was recorded as 9. The smaller the number was, the closer the UIV was to the cranial level. Lower PI, PT, and SS were found in Chinese children compared with published studies of adolescents in other countries [17-21]. Therefore, patients were divided into low PI ( $PI < 45^\circ$ ) and high PI ( $PI \geq 45^\circ$ ) groups based on pelvic incidence.

All surgical procedures were performed by two attending spinal surgeons. The CD Horizon M8, Legacy screw-rod system (Medtronic Sofamor Danek, Inc., Memphis, TN) or Legrity system (Cansun Medical Devices Co., Ltd., Shandong) were used for fixation. The upper instrumented vertebra (UIV) was determined by the surgeons' judgment based on the curve pattern. Generally, UIV should be avoided as the apex of the thoracic kyphosis. The rod bending during the operation was based on the surgeons' personal experience.

## Statistical analysis

All data were analyzed by using SPSS 24.0 software (SPSS Inc., Chicago, IL). Results are presented as mean  $\pm$  standard deviation for continuous variables and as number (percentage) for categorical variables. The normal distribution of the data was demonstrated with the Shapiro-Wilk test. Student t-test (for normally distributed data) and Mann-Whitney-Wilcoxon test (for nonparametric data) were used to determine the statistical differences in continuous data, whereas chi-square test was performed for categorical data analyses. The threshold for statistical significance was a p-value  $< 0.05$ .

## Results

In total, 70 Lenke 5 AIS patients (16 males and 54 females) were included for analysis from the database. The average age of the whole sample was  $15.3 \pm 2.1$  years at the time of surgery. The mean preoperative Cobb angle of the TL/L curve was  $53.4^\circ \pm 8.6$ . At the final follow-up, the mean TL/L Cobb angle was drastically decreased to  $7.3^\circ \pm 6.8$  ( $P < 0.001$ ). The mean correction rate of the TL/L curve was  $86.5\% \pm 11.5\%$ . The mean follow-up was  $36.7 \pm 15.5$  months. There was no significant difference in age, Risser sign, gender distribution, follow-up time.

PJK occurred in 13 out of 70 patients (18.6%) until the final follow-up, while the remainder of the 57 patients demonstrated no PJK. Whether PJK occurred or not, patients were divided into PJK ( $n=13$ ) and Non-PJK groups ( $n=57$ ). The preoperative TL/L Cobb angle and the correction of the Cobb angle were not statistically different between both groups. The PJK group had larger TK, GTK, LL, and PI-LL mismatch than the Non-PJK group. The detailed statistic results of radiological parameters between the two groups are shown in Table 1. The most common lowest instrumented vertebrae (LIV) were L4 ( $n=32$ ), followed by L3 and L5 ( $n=19$  each). No significant difference was noted in the selection of LIV ( $\chi^2=0.860$ ,  $P > 0.05$ ) or UIV ( $7.0 \pm 1.4$  vs.  $7.7 \pm 1.7$ ,  $P > 0.05$ ) between the high PI and low PI group.

Subgroup analysis was performed according to the value of PI to investigate the potential mechanism of PJK. Our results showed that the incidence of PJK was 21.9% (7/32) in the low PI group ( $PI < 45^\circ$ ) and 15.8% (6/38) in the high PI group ( $PI \geq 45^\circ$ ), and there was no statistical difference between the two groups ( $\chi^2=0.425$ ,  $P > 0.05$ ). The high PI group had larger PT, SS, and LL than the low PI group, but there was no significant difference in TK, GTK, SVA, and PJA (Table 2). A comparison of radiological parameters between the Non-PJK and PJK subgroups with low PI was shown in Table 3. Significant differences were found in LL, TK, GTK, PI-LL between the PJK and Non-PJK subgroups. In these low PI patients, the UIV of the PJK subgroup was comparable to the Non-PJK subgroup (PJK vs. Non-PJK:  $7.7 \pm 1.4$  vs.  $8.1 \pm 1.5$ ,  $P > 0.05$ ). There was no statistical difference in the selection of LIV ( $\chi^2=0.969$ ,  $P > 0.05$ ).

Table 4 summarized preoperative, postoperative, and final follow-up radiological parameters of the high PI patients. The PJK subgroup had larger final GTK ( $p=0.030$ ), TK ( $p=0.012$ ), and LL ( $P=0.003$ ) than the Non-PJK subgroup at the final follow-up. The value of PI-LL was within the ideal range before and after surgery ( $|PI-LL| < 10^\circ$ ). Although the change of TK was larger in the PJK subgroup after surgery, there was no statistical difference between the two subgroups. The UIV of the PJK subgroup was much closer to the cranial level than the Non-PJK subgroup (PJK vs. Non-PJK:  $6.0 \pm 1.3$  vs.  $8.6 \pm 1.6$ ,  $P = 0.003$ ). However, there was no significant difference in the selection of LIV ( $\chi^2=2.153$ ,  $P > 0.05$ ).

## Discussion

Our results showed that the incidence of PJK was 18.6%, and stood in the lower range of the literature for similar patients [3, 8, 22]. Previous studies have found that greater correction of LL resulted in higher

incidence of PJK and they attributed surgical overcorrection of sagittal deformities as a risk factor [23-25]. Kim et al. [23] identified that excessive lordosis and larger sagittal balance correction led to PJK, requiring revision surgery. Lafage et al. [24] recently refocused the attention of PJK prevention onto spinal alignment, by providing age-adjusted sagittal alignment parameters for adults. They also reported that with increased overcorrection beyond age-adjusted sagittal alignment there is a corresponding increase in PJK severity. PJK is more likely to occur after sagittal alignment (like LL) overcorrection, which is accepted by most researchers. Our clinical experience suggests that LL overcorrection is more likely to occur in patients with a low PI. Up to now, there are no reports on the influence of PI value on PJK in Lenke 5 AIS patients.

Pelvic incidence remains relatively constant during childhood and it determines the pelvic orientation and the size of the lordosis, which is closely correlated with it [16]. In short, the greater the PI, the greater has to be SS, PT, or both. The PI value varies widely among individuals and it is related to the capacity to compensate for sagittal alignment. Our results showed that there was no significant difference in the incidence of PJK between the high and low PI group patients, but the mechanism of PJK was different among high PI and low PI patients. Chinese children and adolescents had lower PI, PT, and SS compared with the Caucasian population [17-19]. In our previous study [20], the mean value of PI of Chinese adolescents was about 45°, so we chose the value of 45° as the critical value of high PI and low PI.

For the patients with low PI, The PJK patients have a larger postoperative LL and worse PI-LL than the Non-PJK patients. However, for patients with high PI, PJK patients have a similar PI-LL to Non-PJK patients. Roussouly et al. advocated that the ability to retrovert the pelvis is limited by a patient's PI, and patients with a low PI have a small capacity to compensate for their sagittal imbalance through pelvic retroversion [26]. In the circumstance of low PI, if the surgical procedure introduces more lumbar lordosis than the patient's PI can accommodate, then the thoracic spine would begin to join into compensation mechanism with additional thoracic kyphosis (PJA↑), which may result in PJK (Figure 1). Patients with low PI has poor pelvic compensation to abnormal sagittal alignment. In such low PI cases, the overcorrection of lumbar lordosis after surgery would easily exceed pelvic compensation. Therefore, postoperative LL increase was more likely to be compensated by increased proximal kyphosis above the fusion levels. For the reasons mentioned above, it is reasonable to assume that low PI patients require strictly matched postoperative LL.

In contrast, patients with high PI had larger PT, SS, LL. These results are consistent with previously published articles [10, 27]. In this study, we found no statistically significant differences in features on preoperative radiological findings between the PJK and Non-PJK subgroups with high PI. The PI-LL were all within 10° in the high PI group before and after surgery, which means PI and LL match well. Even though LL did not meet the ideal curvature at the time of surgery, the remaining lumbar segments below LIV could compensate. It is well known that AIS patients generally have a flat back. In particular, posterior column osteotomy may further reduce TK. To keep well-matched between PI and LL, TK and LL, patients will have a compensatory increase in TK after surgery. Patients increased their proximal kyphosis above LIV to compensate for the postoperative decrease in instrumented TK and to balance head over the

pelvis, which introduces PJK (Figure 2). The closer the UIV selection is to the cranial level, the fewer remaining thoracic segments that can compensate for TK reduction. The risk of PJK may increase in this situation. Our current findings revealed that the UIV in the PJK group was closer to the cranial level, which was consistent with the above compensatory mechanism. In practice, there remains no clear consensus regarding the optimal LIV and UIV in individual patients. The selection of fusion levels continues to vary widely based on patient, regional, and surgeon variables. Therefore, more prospective studies or multi-center studies are needed to verify our results.

For Lenke 5C AIS patients, we suggest that the surgical procedure should be designed according to the PI to minimize the incidence of PJK: the conventional posterior column osteotomy will potentially increase LL. For patients with low PI, overcorrection of LL should be strictly avoided during surgery. We recommend that we should not bend too much lordosis in the lumbar level and begin bending the lordosis below L3 or L4. For patients with high PI, the selection of UIV should not be too cranial (usually below T6). If UIV selection was inevitable to enter the cranial level (above T6), we suggest to increase the density of the screws in the thoracic level and try to bend more TK to correct the flat-back deformity in such case.

Several limitations still exist. Firstly, it was a retrospective study and had a relatively small sample size. Further analysis, such as a randomized trial with a larger number of patients, will be necessary to confirm our findings. Secondly, data collection for pre- and postoperative clinical information was incomplete in some areas such as health-related quality of life scores. Therefore, we were unable to measure the clinical impact of radiographical PJK.

## Conclusion

The incidence of PJK in Lenke 5 AIS was 18.6%. Our results found no difference in the incidence of PJK according to PI, but the mechanisms of PJK may be different for different PI values. Patients with low PI have a small capacity to compensate for their sagittal imbalance, if the surgical procedure introduces more lumbar lordosis (LL overcorrection) than the patient's PI can accommodate, the proximal unfused segments may compensate more LL through PJK. Patients with high PI have a large compensatory capacity through the pelvis, but the UIV is closer to the cranial level, which limits the overall compensation of the spine and pelvis and may lead to PJK. The design of surgical plans for Lenke 5 AIS patients should take individual PI into account to decrease the incidence of PJK. For patients with low PI, overcorrection of LL should be strictly avoided during surgery. For patients with high PI, attention should be paid to the selection of the UIV.

## Abbreviations

AIS: Adolescent idiopathic scoliosis; PJK: Proximal junctional kyphosis; PJA: Proximal junctional sagittal Cobb angle; UIV: The upper instrumented vertebra; LIV: Lowest instrumented vertebra; TK: thoracic kyphosis; LL: Lumbar lordosis; PI: Pelvic incidence; EOS: early-onset scoliosis; IRB: the institutional review



board; TL/L: Thoracolumbar/lumbar; PA: Posteroanterior; SS: Sacral slope; PT: Pelvic tilt; GTK: global TK (T1-T12 sagittal Cobb angle); SVA: Sagittal vertical axis; TLK: thoracolumbar junction kyphosis angle (Cobb angle between T10-L2); ANOVA: analysis of variance; HRQOL: Health-Related Quality of Life

## Declarations

**Ethics approval and consent to participate:** This study was approved by the ethics committee of Sichuan University and informed consent was obtained from the patients and their parents.

**Consent for publication:** All patients and their parents gave written consent for publication of their anonymized data.

**Availability of data and material:** The datasets used during the current study are available from the corresponding author on reasonable request.

**Competing interests:** The authors declare that they have no competing interests.

**Funding:** we are grateful to China Nature Science Foundation: No.81501900 and Projects of the Science & Technology Department of Sichuan Province: No. 2015SZ0026.

**Author Contributions:** Q Zhou and B.W. Hu drafted the initial manuscript. X Yang, Q Zhou, and Y.M. Song conceptualized and designed the study, reviewed and revised the manuscript. L.N. Wang, Z.J. Zhou, and L Wang carried out the initial analyses, reviewed, and revised the manuscript. L.M. Liu, L Wang, P Xiu, and C.G. Zhou coordinated and supervised data collection, critically reviewed and revised the manuscript for important intellectual content. All authors approved the final manuscript as submitted and agree to be accountable for all aspects of the work.

**Acknowledgments:** Not applicable.

## References

1. Schwab F, Lafage V, Patel A, Farcy JP: **Sagittal plane considerations and the pelvis in the adult patient.** *Spine* 2009, **34**(17):1828-1833.
2. Glattes RC, Bridwell KH, Lenke LG, Kim YJ, Rinella A, Edwards C, 2nd: **Proximal junctional kyphosis in adult spinal deformity following long instrumented posterior spinal fusion: incidence, outcomes, and risk factor analysis.** *Spine* 2005, **30**(14):1643-1649.
3. Ferrero E, Bocahut N, Lefevre Y, Roussouly P, Pesenti S, Lakhil W, Odent T, Morin C, Clement JL, Compagnon R *et al*: **Proximal junctional kyphosis in thoracic adolescent idiopathic scoliosis: risk factors and compensatory mechanisms in a multicenter national cohort.** *European spine journal : official publication of the European Spine Society, the European Spinal Deformity Society, and the European Section of the Cervical Spine Research Society* 2018, **27**(9):2241-2250.

4. Lonner BS, Ren Y, Newton PO, Shah SA, Samdani AF, Shufflebarger HL, Asghar J, Sponseller P, Betz RR, Yaszay B: **Risk Factors of Proximal Junctional Kyphosis in Adolescent Idiopathic Scoliosis-The Pelvis and Other Considerations.** *Spine deformity* 2017, **5(3)**:181-188.
5. Kim YJ, Bridwell KH, Lenke LG, Kim J, Cho SK: **Proximal junctional kyphosis in adolescent idiopathic scoliosis following segmental posterior spinal instrumentation and fusion: minimum 5-year follow-up.** *Spine* 2005, **30(18)**:2045-2050.
6. Helgeson MD, Shah SA, Newton PO, Clements DH, 3rd, Betz RR, Marks MC, Bastrom T, Harms Study G: **Evaluation of proximal junctional kyphosis in adolescent idiopathic scoliosis following pedicle screw, hook, or hybrid instrumentation.** *Spine* 2010, **35(2)**:177-181.
7. Wang J, Zhao Y, Shen B, Wang C, Li M: **Risk factor analysis of proximal junctional kyphosis after posterior fusion in patients with idiopathic scoliosis.** *Injury* 2010, **41(4)**:415-420.
8. Zhong J, Cao K, Wang B, Li H, Zhou X, Xu X, Lin N, Liu Q, Lu H: **Incidence and Risk Factors for Proximal Junctional Kyphosis in Adolescent Idiopathic Scoliosis After Correction Surgery: A Meta-Analysis.** *World neurosurgery* 2019.
9. Sun Z, Qiu G, Zhao Y, Guo S, Wang Y, Zhang J, Shen J: **Risk factors of proximal junctional angle increase after selective posterior thoracolumbar/lumbar fusion in patients with adolescent idiopathic scoliosis.** *European spine journal : official publication of the European Spine Society, the European Spinal Deformity Society, and the European Section of the Cervical Spine Research Society* 2015, **24(2)**:290-297.
10. Boulay C, Tardieu C, Hecquet J, Benaim C, Mouilleseaux B, Marty C, Prat-Pradal D, Legaye J, Duval-Beaupere G, Pelissier J: **Sagittal alignment of spine and pelvis regulated by pelvic incidence: standard values and prediction of lordosis.** *European spine journal : official publication of the European Spine Society, the European Spinal Deformity Society, and the European Section of the Cervical Spine Research Society* 2006, **15(4)**:415-422.
11. Mangione P, Gomez D, Senegas J: **Study of the course of the incidence angle during growth.** *European spine journal : official publication of the European Spine Society, the European Spinal Deformity Society, and the European Section of the Cervical Spine Research Society* 1997, **6(3)**:163-167.
12. Mehta VA, Amin A, Omeis I, Gokaslan ZL, Gottfried ON: **Implications of spinopelvic alignment for the spine surgeon.** *Neurosurgery* 2012, **70(3)**:707-721.
13. Cho KJ, Suk SI, Park SR, Kim JH, Kang SB, Kim HS, Oh SJ: **Risk factors of sagittal decompensation after long posterior instrumentation and fusion for degenerative lumbar scoliosis.** *Spine* 2010, **35(17)**:1595-1601.
14. Cho W, Mason JR, Smith JS, Shimer AL, Wilson AS, Shaffrey CI, Shen FH, Novicoff WM, Fu KM, Heller JE *et al.* **Failure of lumbopelvic fixation after long construct fusions in patients with adult spinal deformity: clinical and radiographic risk factors: clinical article.** *Journal of neurosurgery Spine* 2013, **19(4)**:445-453.

15. Carender CN, Morris WZ, Poe-Kochert C, Thompson GH, Son-Hing JP, Liu RW: **Low Pelvic Incidence Is Associated With Proximal Junctional Kyphosis in Patients Treated With Growing Rods.** *Spine* 2016, **41**(9):792-797.
16. Legaye J, Duval-Beaupere G, Hecquet J, Marty C: **Pelvic incidence: a fundamental pelvic parameter for three-dimensional regulation of spinal sagittal curves.** *European spine journal : official publication of the European Spine Society, the European Spinal Deformity Society, and the European Section of the Cervical Spine Research Society* 1998, **7**(2):99-103.
17. Zhou XY, Zhao J, Li B, Wang ZB, Zhang ZC, Hu W, Cheng YJ, Li M, Wei XZ: **Assessment of Sagittal Spinopelvic Balance in a Population of Normal Chinese Children.** *Spine* 2020.
18. Mac-Thiong JM, Labelle H, Berthonnaud E, Betz RR, Roussouly P: **Sagittal spinopelvic balance in normal children and adolescents.** *European spine journal : official publication of the European Spine Society, the European Spinal Deformity Society, and the European Section of the Cervical Spine Research Society* 2007, **16**(2):227-234.
19. Gutman G, Labelle H, Barchi S, Roussouly P, Berthonnaud E, Mac-Thiong JM: **Normal sagittal parameters of global spinal balance in children and adolescents: a prospective study of 646 asymptomatic subjects.** *European spine journal : official publication of the European Spine Society, the European Spinal Deformity Society, and the European Section of the Cervical Spine Research Society* 2016, **25**(11):3650-3657.
20. Yang X, Liu L, Song Y, Zhou C, Zhou Z, Wang L, Wang L: **Pre- and postoperative spinopelvic sagittal balance in adolescent patients with lenke type 5 idiopathic scoliosis.** *Spine* 2015, **40**(2):102-108.
21. Vidal C, Mazda K, Ilharreborde B: **Sagittal spino-pelvic adjustment in severe Lenke 1 hypokyphotic adolescent idiopathic scoliosis patients.** *European spine journal : official publication of the European Spine Society, the European Spinal Deformity Society, and the European Section of the Cervical Spine Research Society* 2016, **25**(10):3162-3169.
22. Zhao J, Yang M, Yang Y, Chen Z, Li M: **Proximal junctional kyphosis following correction surgery in the Lenke 5 adolescent idiopathic scoliosis patient.** *Journal of orthopaedic science : official journal of the Japanese Orthopaedic Association* 2018, **23**(5):744-749.
23. Kim HJ, Bridwell KH, Lenke LG, Park MS, Song KS, Piyaskulkaew C, Chuntarapas T: **Patients with proximal junctional kyphosis requiring revision surgery have higher postoperative lumbar lordosis and larger sagittal balance corrections.** *Spine* 2014, **39**(9):E576-580.
24. Lafage R, Schwab F, Glassman S, Bess S, Harris B, Sheer J, Hart R, Line B, Henry J, Burton D *et al*: **Age-Adjusted Alignment Goals Have the Potential to Reduce PJK.** *Spine* 2017, **42**(17):1275-1282.
25. Line BG, Bess S, Lafage R, Lafage V, Schwab F, Ames C, Kim HJ, Kelly M, Gupta M, Burton D *et al*: **Effective Prevention of Proximal Junctional Failure in Adult Spinal Deformity Surgery Requires a Combination of Surgical Implant Prophylaxis and Avoidance of Sagittal Alignment Overcorrection.** *Spine* 2020, **45**(4):258-267.
26. Roussouly P, Pinheiro-Franco JL: **Biomechanical analysis of the spino-pelvic organization and adaptation in pathology.** *European spine journal : official publication of the European Spine Society,*

*the European Spinal Deformity Society, and the European Section of the Cervical Spine Research Society* 2011, **20 Suppl 5**:609-618.

27. Barrey C, Roussouly P, Le Huec JC, D'Acunzi G, Perrin G: **Compensatory mechanisms contributing to keep the sagittal balance of the spine.** *European spine journal : official publication of the European Spine Society, the European Spinal Deformity Society, and the European Section of the Cervical Spine Research Society* 2013, **22 Suppl 6**:S834-841.

## Tables

**Table 1** Comparison of radiological parameters between the PJK group and the Non-PJK group

	Total (n=70)	Non-PJK Group (n=57)	PJK Group (n=13)	P#
TL/L Cobb angle				
Preoperative	53.4±8.6	53.9±8.8	51.5±7.9	0.374
Postoperative	6.5±5.9	6.3±6.1	7.5±5.4	0.507
Final	7.3±6.8	7.1±6.9	8.4±6.3	0.515
PI	45.5±10.2	46.1±10.1	43.1±10.8	0.352
SS				
Preoperative	38.0±7.7	37.8±7.6	38.7±8.4	0.724
Postoperative	36.2±6.9	36.3±7.0	35.7±6.4	0.761
Final	36.9±7.5	37.0±7.7	37.3±6.5	0.827
PT				
Preoperative	7.5±6.9	8.2±6.6	4.4±7.9	0.077
Postoperative	9.3±7.7	9.8±7.0	7.1±10.3	0.247
Final	8.7±7.4	9.3±7.0	5.9±8.4	0.132
LL				
Preoperative	52.0±10.7	50.7±10.5	57.7±10.2	<b>0.031</b>
Postoperative	50.9±9.0	50.1±8.6	56.4±8.9	<b>0.015</b>
Final	52.6±9.5	51.1±9.1	58.8±8.9	<b>0.006</b>
GTK (T1-12)				
Preoperative	28.3±12.9	26.2±12.0	37.6±12.9	<b>0.003</b>
Postoperative	27.1±11.3	25.3±11.4	37.2±6.3	<b>0.004</b>
Final	32.1±12.9	29.6±12.1	42.8±10.8	<b>&lt;0.001</b>
TK (T5-12)				
Preoperative	21.1±10.7	18.9±8.7	30.7±13.4	<b>0.001</b>
Postoperative	20.4±8.9	17.7±8.5	29.3±5.7	<b>0.001</b>
Final	24.3±11.9	21.6±9.4	36.0±14.8	<b>&lt;0.001</b>
SVA (mm)				
Preoperative	-6.9±27.7	-6.5±26.4	-8.5±34.5	0.825

Postoperative	-9.1±23.2	-10.3±22.6	-3.8±26.1	0.371
Final	-10.7±24.7	-10.9±24.7	-9.5±25.4	0.844
PJA				
Preoperative	9.3±4.0	9.3±4.3	8.8±2.4	0.636
Postoperative	11.1±5.7	9.9±5.1	16.2±5.2	<b>&lt;0.001</b>
Final	14.9±8.0	12.3±5.3	26.3±7.6	<b>&lt;0.001</b>
PI-LL				
Preoperative	-6.5±11.9	-4.6±10.9	-14.6±13.1	<b>0.005</b>
Postoperative	-5.4±10.3	-3.6±8.8	-13.6±12.4	<b>0.001</b>
Final	-7.0±10.0	-5.0±8.8	-15.7±10.3	<b>&lt;0.001</b>

PJK, proximal junctional kyphosis; TL/L, thoracolumbar/lumbar; PI, pelvic incidence; LL, lumbar lordosis; GTK, global thoracic kyphosis; TK, thoracic kyphosis; SVA, sagittal vertical axis; PJA, proximal junctional angle

“#” comparison between the PJK group and the Non-PJK group

**Table 2** Comparison of radiological parameters between the low PI group and the high PI group

Variables	Low PI (<45°) n=32	High PI (≥45°) n=38	p
PJK	n=7	n=6	0.514
TL/L Cobb angle			
Preoperative	52.53±8.96	54.14±8.38	0.443
Postoperative	6.2±5.4	6.8±6.4	0.690
Final	7.1±6.3	7.6±7.3	0.746
PI	37.1±6.0	52.6±7.2	<b>&lt;0.001</b>
SS			
Preoperative	33.0±5.5	42.2±6.7	<b>&lt;0.001</b>
Postoperative	32.0±4.7	39.8±6.4	<b>&lt;0.001</b>
Final	32.1±6.1	40.9±6.0	<b>&lt;0.001</b>
PT			
Preoperative	4.1±6.5	10.4±6.0	<b>&lt;0.001</b>
Postoperative	5.1±8.1	12.8±6.3	<b>&lt;0.001</b>
Final	5.2±8.1	11.7±5.2	<b>&lt;0.001</b>
LL			
Preoperative	49.2±11.4	54.4±9.7	<b>0.043</b>
Postoperative	47.5±7.9	53.9±8.9	<b>0.002</b>
Final	47.6±7.6	56.7±9.0	<b>&lt;0.001</b>
GTK (T1-12)			
Preoperative	28.4±14.1	28.3±12.1	0.997
Postoperative	28.5±10.2	29.7±12.3	0.666
Final	30.5±11.9	33.5±13.6	0.334
TK (T5-12)			
Preoperative	22.6±12.9	19.9±8.5	0.285
Postoperative	22.7±9.0	20.42±8.9	0.299
Final	24.6±11.1	24.1±12.8	0.868
SVA			
Preoperative	-10.5±30.7	-3.9±25.1	0.330

Postoperative	-8.6±26.5	-9.6±20.5	0.886
Final	-13.1±21.2	-8.7±27.5	0.466
PJA			
Preoperative	9.3±3.7	9.3±4.4	0.949
Postoperative	11.5±5.5	10.7±5.9	0.539
Final	14.8±8.9	15.1±7.2	0.894
PI-LL			
Preoperative	-12.1±12.3	-1.7±9.3	<b>&lt;0.001</b>
Postoperative	-10.4±10.8	-1.3±7.8	<b>&lt;0.001</b>
Final	-10.4±10.2	-4.2±9.0	<b>0.009</b>

PJK, proximal junctional kyphosis; TL/L, thoracolumbar/lumbar; PI, pelvic incidence; LL, lumbar lordosis; GTK, global thoracic kyphosis; TK, thoracic kyphosis; SVA, sagittal vertical axis; PJA, proximal junctional angle

**Table 3** Comparison of radiological parameters between PJK and non-PJK patients with low PI



Low PI (PI < 45°) n=32	Non-PJK Group n=25	PJK Group n=7	p
PI	37.8±6.2	34.3±4.4	0.169
SS			
Preoperative	33.1±6.2	32.7±1.6	0.688
Postoperative	31.5±4.5	33.5±5.5	0.336
Final	31.4±6.3	34.4±5.4	0.266
PT			
Preoperative	4.7±6.8	1.6±5.2	0.267
Postoperative	6.4±6.8	0.7±6.8	0.059
Final	6.6±8.3	0.1±5.1	0.059
LL			
Preoperative	47.3±11.4	55.5±8.9	0.095
Postoperative	45.7±6.9	53.6±8.5	<b>0.017</b>
Final	45.5±6.2	54.8±7.7	<b>0.003</b>
Δ LL (post-pre)	-1.6±11.4	-1.8±9.0	0.958
Δ LL (final-pre)	-1.8±11.0	-0.6±7.7	0.804
GTK (T1-12)			
Preoperative	24.5±11.8	42.2±13.4	<b>0.002</b>
Postoperative	25.9±9.6	37.8±6.0	<b>0.004</b>
Final	27.4±10.9	41.5±8.7	<b>0.004</b>
Δ T1-12 (post-pre)	1.3±10.9	-4.3±15.6	0.273
Δ T1-12 (final-pre)	2.9±9.9	-0.7±13.3	0.438
TK (T5-12)			
Preoperative	18.8±9.1	36.2±15.8	<b>0.001</b>
Postoperative	17.3±8.2	31.0±6.6	<b>0.004</b>
Final	21.3±8.7	36.2±11.4	<b>0.001</b>
Δ T5-12 (post-pre)	-1.4±8.1	-5.1±13.1	0.105
Δ T5-12 (final-pre)	2.4±8.0	0.01±11.0	0.514
SVA (mm)			

Preoperative	-9.2±30.5	-15.2±33.	0.654
Postoperative	-11.4±25.5	1.5±29.5	0.262
Final	-15.4±20.4	-4.8±23.5	0.251
PJA			
Preoperative	9.3±4.0	9.2±1.8	0.941
Postoperative	9.9±4.5	17.1±5.2	<b>0.001</b>
Final	11.3±5.2	27.2±8.1	<b>&lt;0.001</b>
Δ PJA (final-pre)	1.9±4.2	18.0±7.7	<b>&lt;0.001</b>
PI-LL			
Preoperative	-9.5±11.5	-21.1±10.9	<b>0.024</b>
Postoperative	-7.8±9.5	-19.4±10.6	<b>0.009</b>
Final	-7.5±8.7	-20.3±9.3	<b>0.002</b>
Δ PI-LL (post-pre)	1.7±11.0	1.7±9.0	0.987
Δ PI-LL (final-pre)	1.9±10.8	0.8±7.8	0.804

PJK, proximal junctional kyphosis; PI, pelvic incidence; SS, sacral slope; PT, pelvic tilt; LL, lumbar lordosis; GTK, global thoracic kyphosis; TK, thoracic kyphosis; SVA, sagittal vertical axis; PJA, proximal junctional angle

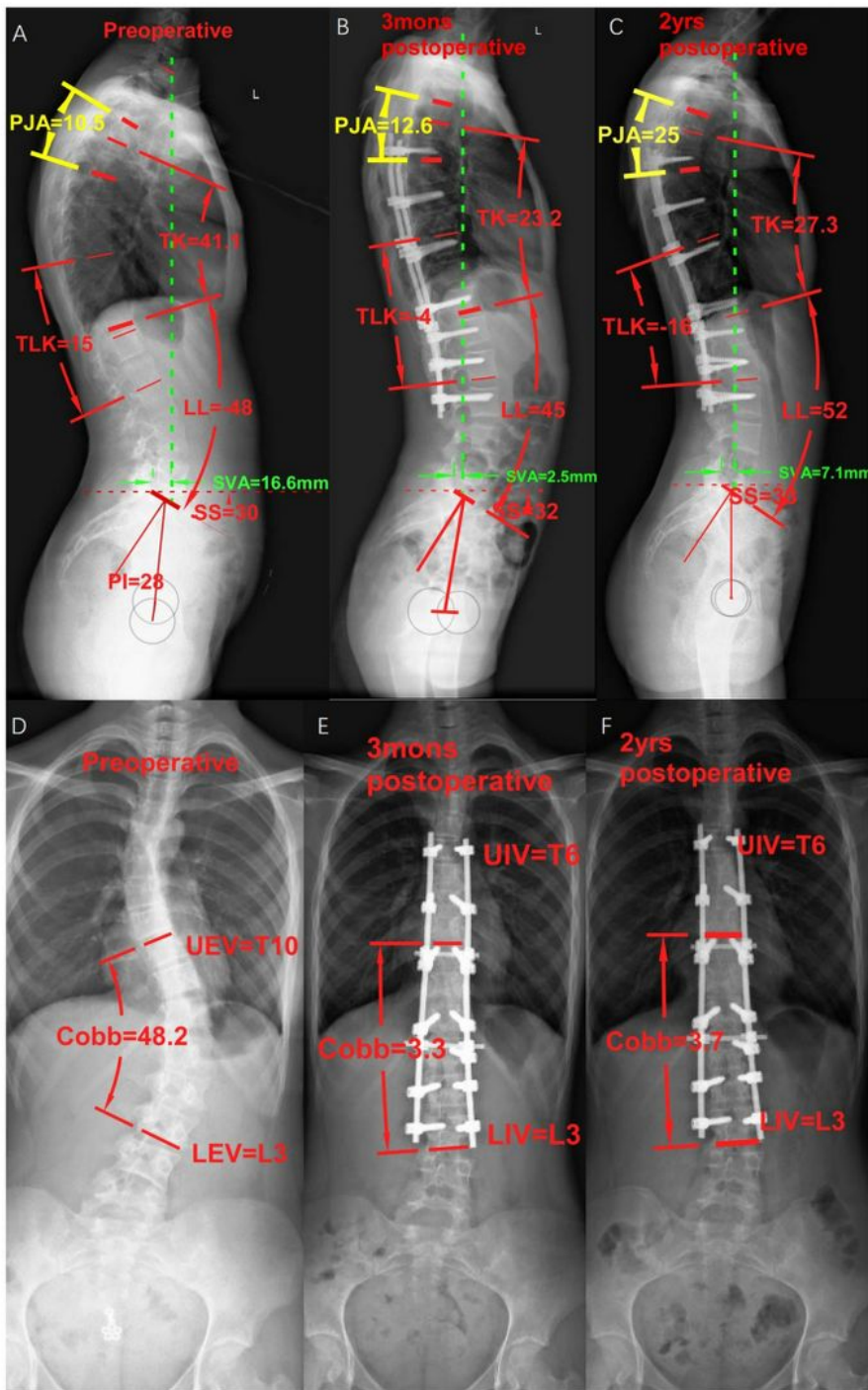
**Table 4** Comparison of radiological parameters between PJK and non-PJK patients with high PI

High PI ( $\geq 45^\circ$ ) n=38	Non-PJK Group n=32	PJK Group n=6	p
PI	52.5 $\pm$ 7.6	53.4 $\pm$ 4.9	0.779
SS			
Preoperative	41.6 $\pm$ 6.4	45.7 $\pm$ 7.7	0.169
Postoperative	40.1 $\pm$ 6.4	38.2 $\pm$ 7.0	0.524
Final	41.0 $\pm$ 6.0	40.7 $\pm$ 6.4	0.912
PT			
Preoperative	10.9 $\pm$ 5.1	7.7 $\pm$ 9.6	0.461
Postoperative	12.5 $\pm$ 5.9	14.5 $\pm$ 8.7	0.482
Final	11.5 $\pm$ 5.1	12.7 $\pm$ 6.2	0.604
LL			
Preoperative	53.2 $\pm$ 9.0	60.3 $\pm$ 11.7	0.098
Postoperative	52.8 $\pm$ 8.9	59.5 $\pm$ 8.9	0.086
Final	55.3 $\pm$ 8.6	63.8 $\pm$ 8.3	<b>0.003</b>
$\Delta$ LL (post-pre)	-0.4 $\pm$ 7.9	-0.7 $\pm$ 15.2	0.927
$\Delta$ LL (final-pre)	2.1 $\pm$ 8.1	3.4 $\pm$ 14.4	0.756
GTK (T1-12)			
Preoperative	27.6 $\pm$ 12.2	32.2 $\pm$ 11.1	0.394
Postoperative	28.3 $\pm$ 12.7	36.4 $\pm$ 7.0	0.143
Final	35.4 $\pm$ 12.7	44.4 $\pm$ 13.5	<b>0.030</b>
$\Delta$ T1-12 (post-pre)	0.7 $\pm$ 7.9	4.20 $\pm$ 7.31	0.337
$\Delta$ T1-12 (final-pre)	7.8 $\pm$ 8.3	12.1 $\pm$ 15.7	0.061
TK (T5-12)			
Preoperative	19.0 $\pm$ 8.5	24.3 $\pm$ 6.6	0.163
Postoperative	17.8 $\pm$ 8.9	22.2 $\pm$ 3.9	<b>0.036</b>
Final	28.8 $\pm$ 10.1	35.8 $\pm$ 19.3	<b>0.012</b>
$\Delta$ T5-12 (post-pre)	-1.2 $\pm$ 7.6	-2.1 $\pm$ 7.7	0.409
$\Delta$ T5-12 (final-pre)	9.8 $\pm$ 9.7	11.5 $\pm$ 19.7	0.336
SVA (mm)			

Preoperative	-4.5±22.9	-0.7±37.1	0.732
Postoperative	-9.5±20.5	-10.1±22.5	0.946
Final	-7.6±27.6	-14.9±28.6	0.555
PJA			
Preoperative	9.4±4.5	8.3±3.0	0.568
Postoperative	9.8±5.6	15.2±5.5	<b>0.036</b>
Final	13.1±5.3	25.3±7.5	<b>&lt;0.001</b>
Δ PJA (final-pre)	3.6±3.8	17.0±8.0	<b>&lt;0.001</b>
PI-LL			
Preoperative	-0.7±8.6	-6.9±11.7	0.135
Postoperative	-0.2±6.6	-6.8±11.3	0.220
Final	-2.9±8.5	-10.4±9.2	0.058

PJK, proximal junctional kyphosis; PI, pelvic incidence; SS, sacral slope; PT, pelvic tilt; LL, lumbar lordosis; GTK, global thoracic kyphosis; TK, thoracic kyphosis; SVA, sagittal vertical axis; PJA, proximal junctional angle

## Figures



**Figure 1**

The pre- and postoperative radiographs of a 15-year-old female patient with low PI (PI=28°) who developed PJK after surgery. She underwent T6-L3 instrumentation. The thoracolumbar junction is corrected from kyphosis to lordosis. Postoperative TK was significantly reduced, while the PJA was significantly increased and PJK occurred at 2 years' follow-up. Other sagittal parameters did not change significantly (A to C). In the coronal plane, the major thoracolumbar curve was corrected from 48.2° to

3.3°, which remained stable (3.7°) at a two-year follow-up. The UIV was T6 and the LIV was L3 (D to F). PI, pelvic incidence; SS, sacral slope; LL, lumbar lordosis; TK, thoracic kyphosis; GTK, global thoracic kyphosis; PJA, proximal junctional angle; TLK, thoracolumbar junctional kyphosis angle; SVA, sagittal vertical axis.

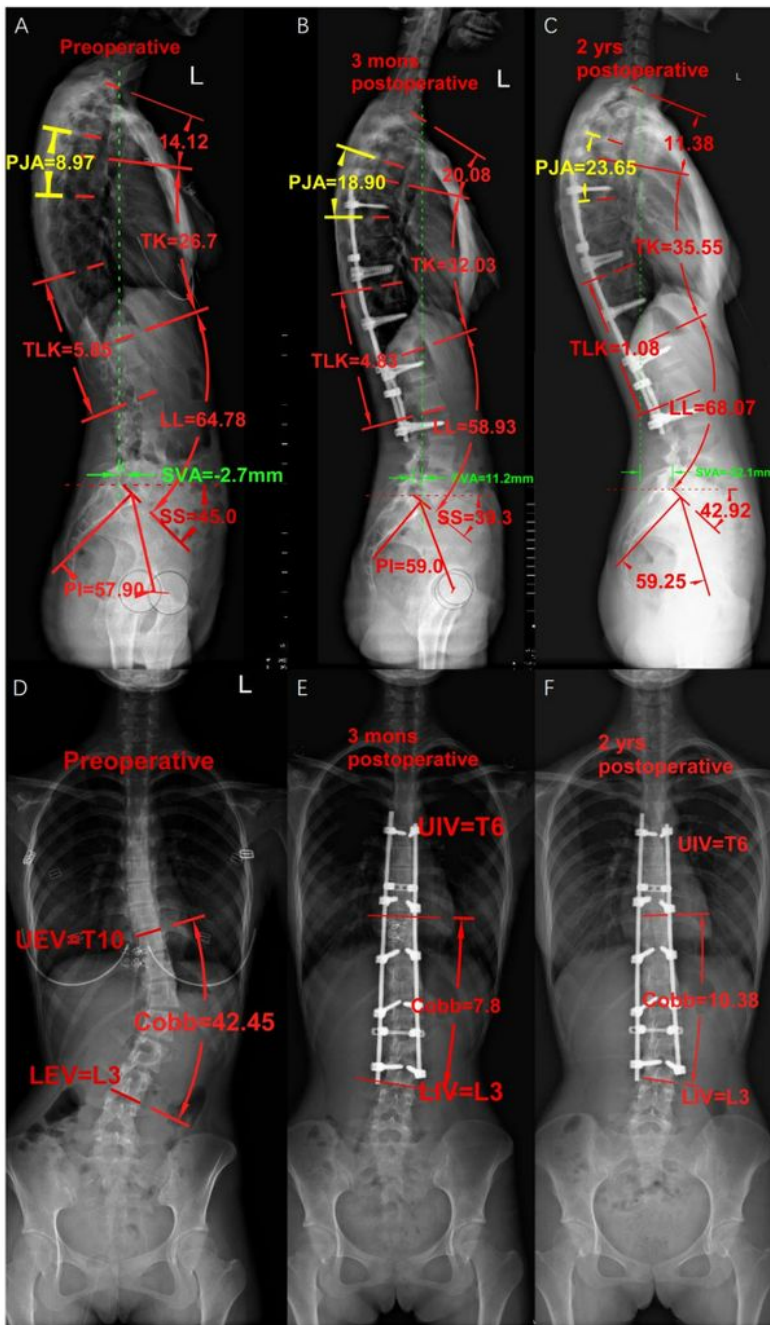


Figure 2

The pre- and postoperative radiographs of a 17-year-old female patient with high PI (PI=57.9°) who developed PJK after surgery. She underwent a T6-L3 fusion. The PJA increased to 23.65° at 2 years' follow-up (A to C). The thoracolumbar/lumbar curve was corrected from 42.45° to 7.8° (D to E). The UIV was T6 and the LIV was L3. PI, pelvic incidence; SS, sacral slope; LL, lumbar lordosis; TK, thoracic kyphosis; GTK, global thoracic kyphosis; PJA, proximal junctional angle; TLK, thoracolumbar junctional kyphosis angle; SVA, sagittal vertical axis.