

# Development of A Controlled-Environment Assay To Induce Iron Deficiency Chlorosis In Soybean By Adjusting Calcium Carbonates, pH, And Nodulation

**Ryan Merry**

University of Minnesota Twin Cities Campus: University of Minnesota Twin Cities

**Mary Jane Espina**

University of Minnesota Twin Cities Campus: University of Minnesota Twin Cities

**Aaron Lorenz** (✉ [lore0149@umn.edu](mailto:lore0149@umn.edu))

University of Minnesota <https://orcid.org/0000-0002-4361-1683>

**Robert Stupar**

University of Minnesota Twin Cities: University of Minnesota Twin Cities



---

## Methodology

**Keywords:** Soybean, iron deficiency chlorosis, abiotic stress

**Posted Date:** August 18th, 2021

**DOI:** <https://doi.org/10.21203/rs.3.rs-783545/v1>

**License:**   This work is licensed under a Creative Commons Attribution 4.0 International License. [Read Full License](#)

---

# Abstract

## Background

Soybean iron deficiency chlorosis (IDC) is an important nutrient stress frequently found in high pH and/or soils high in calcium carbonates. To advance the understanding of IDC resistance in soybean, a rapid (21-day) controlled-environment assay was developed to investigate the effects of nodulation, pH, and calcium carbonate levels on soybean iron deficiency traits. This system was tested on four genotypes known to exhibit differences in iron efficiency, including two standard IDC check cultivars and a pair of near-isogenic lines exhibiting variation at an IDC resistance quantitative trait locus. Visual score, chlorophyll content, plant height, root dry mass, and shoot dry mass were measured to quantify iron stress.

## Results

Calcium carbonate levels and nodulation were found to have the greatest effects on IDC severity. Increasing carbonate levels worsened IDC symptoms, while nodulation reduced symptoms in all genotypes. Higher pH levels increased iron deficiency symptoms in check genotypes 'Corsoy 79' and 'Dawson', but did not induce iron deficiency symptoms in near-isogenic lines. A significant interaction was observed between genotype, nodulation, and calcium carbonate level, indicating that a specific treatment level could discern IDC symptoms between genotypes differing in resistance to IDC.

## Conclusions

IDC symptoms were successfully induced in the Check Genotypes Experiment as well as the NIL Experiment, indicating the success of using a liquid  $\text{CaCO}_3$  source and this assay for inducing IDC in controlled environments. However, our results suggest that treatment levels that best differentiate genotypes for their IDC resistance may need to be determined for each experiment because of the unique way in which different genotypes display symptoms and respond to iron deficiency conditions.

## Introduction

Iron deficiency chlorosis (IDC) is an important nutrient deficiency in soybean (*Glycine max* L.), resulting in an estimated 260 million dollars in yield losses annually in the U.S. (Peiffer *et al.*, 2012). There are two major iron acquisition strategies known in plants. Strategy II plants (such as corn, oats, and other grasses) are able to take up  $\text{Fe}^{3+}$  under iron limiting conditions. This is accomplished by extrusion of siderophore compounds in the rhizosphere which bind  $\text{Fe}^{3+}$  and are then transported back inside the root zone where the iron can be converted to  $\text{Fe}^{2+}$  (Marschner and Romheld, 1994). In strategy I plants, such as soybean,  $\text{Fe}^{3+}$  is reduced to  $\text{Fe}^{2+}$  in the rhizosphere by extrusion of protons and then transported into the root. Several factors can limit the success of this strategy (Marschner and Romheld, 1994). If the buffering capacity of the soil is too great, the plant may not be able to extrude enough protons to reduce  $\text{Fe}^{3+}$  to  $\text{Fe}^{2+}$  (Hansen *et al.*, 2003; Inskeep and Bloom, 1987). This strategy is also in direct competition with nitrogen acquisition. When nitrate is available in the soil for soybean uptake, the plant often exacerbates iron stress by increasing the pH of the soil to scavenge nitrogen (Rogovska *et al.*, 2007; Bloom *et al.*, 2007; Wiersma, 2010). Management of excess nitrogen in IDC prone areas is an important agronomic tool for limiting IDC symptoms (Naeve and Rehm, 2006).

IDC in soybean most frequently occurs in soils with high levels of calcium carbonates and pH greater than 7 (Hansen *et al.*, 2003), although the complete soil chemistry of iron deficiency in soybean is complex and can be exacerbated by

other factors (i.e. nitrates). Genetic resistance to IDC remains the most effective method for managing IDC stress (Goos and Johnson, 2000; Kaiser et al., 2014). Breeding for IDC resistance is challenging, relying on imperfect field observations in nurseries prone to IDC. Despite carefully selecting nurseries, symptoms may be absent in some years due to variation in soil moisture levels and climatic variables. IDC severity can present extreme spatial variation in nurseries, making standard comparisons between lines difficult (Inskeep and Bloom, 1987; Xu et al., 2020).

The lack of standard testing conditions in a controlled environment makes attempts at studying physiological differences between efficient and inefficient soybean genotypes especially challenging. Using soil from IDC nurseries in potted controlled environment experiments has been attempted, but results were not consistent between controlled environment type (growth chamber vs. greenhouse) or environment from which soil was taken (Fairbanks et al., 1987). Soil collection, transport, and storage for experiments also brings into question the feasibility of this method. Many controlled IDC studies are done using hydroponic methods. Most often in these experiments, iron concentrations are limited in the nutrient solution and pH is increased to induce IDC (Dragonuk et al., 1989; Lin et al., 1998; O'Rourke *et al.*, 2007; Peiffer *et al.*, 2012). Instead of making iron unavailable to plants, as occurs in the field, iron is limited in the hydroponic nutrient solution. The use of carbonates to limit iron and induce IDC symptoms in hydroponics has been conducted using solid  $\text{NaHCO}_3$  (Coulombe et al., 1984) which can be slow to dissolve and is chemically different than the  $\text{CaCO}_3$  found in most IDC prone soil. The use of a pre-dissolved liquid source of  $\text{CaCO}_3$  could improve experimental results by reducing variation caused by undissolved carbonates and more closely represent field conditions. Coulombe et al. (1984) also identified a possible independent effect of carbonates in the induction of IDC. The use of liquid  $\text{CaCO}_3$  could allow for the independent study of the effects of pH and carbonates on soybean genotypes.

In controlled IDC hydroponic experiments, the effect of nodulation on IDC symptoms is largely ignored despite indications that nodulation can improve the response to iron stress in soybean (Soerensen et al., 1988). A nodulation study of the cultivar T203, which has low resistance to IDC and does not respond to iron stress, showed that nodulated roots could produce an iron stress response and reduce chlorosis symptoms compared to non-nodulated plants (Soerensen et al., 1989). Nitrogen fixation by *Bradyrhizobium japonicum* (henceforth referred to as *rhizobia*) bacteria is also a large iron sink for soybean. Leghemoglobin and nitrogenase, crucial enzymes involved in nitrogen fixation in the nodule, require iron for proper activity. It is possible that *rhizobia* in nodules signal to the plant under iron stress, improving the overall iron stress response. Relying on nodules for nitrogen fixation rather than scavenging soil nitrate could also alleviate iron stress.

Soybean IDC resistance is a complex trait and there is a need to further dissect the factors and interactions that determine the plant's symptoms and responses to this abiotic stress (Reviewed by Merry *et al.*, this issue). Developing a method to represent field conditions more accurately will allow for a better understanding of the physiology of IDC in the future. The goal of this study was to develop a growth chamber assay to analyze the effects of genotype, nodulation, pH, and calcium carbonates on IDC severity using single potted plants as the experimental unit. The usefulness of such an assay would be determined by whether the assay can induce IDC symptoms in soybean and whether differences in IDC symptoms are found between efficient and inefficient soybean genotypes.

## Methods

### Plant Materials

Two pairs of genotypes differing for resistance to IDC were selected for this study. To accommodate the large number of treatments required by the full factorial design of the experiment, only one pair of genotypes could be included in

the growth chamber per experimental run and were thus analyzed separately. The first pair consisted of the cultivar 'Corsoy 79' (PI 518669), which has low resistance to IDC, and the cultivar 'Dawson' (PI 542403), which has high resistance to IDC, and is described as the "Check Genotypes Experiment" henceforth. The second pair consisted of near isogenic lines (NIL) that differ in resistance to IDC, developed from a cross between the genotypes 'Fiskeby III' (PI 438471) and 'Mandarin (Ottawa)' (PI 548379), as described by Merry et al. (2019). The specific pair used was from family 609 as described in Merry et al. (2019). The experiment involving these lines will henceforth be referred to as the "NIL Experiment". The NIL genotypes are highly isogenic ( $F_{11:12}$ ) and differ at a ~ 137 kb region on Gm05 known to harbor a quantitative trait locus (QTL) controlling IDC resistance (Merry et al. 2019).

## Growth medium

Medium-coarse vermiculite (Sun Gro Horticulture Agawam, MA) was used as the growth medium in this study, as it is unreactive, devoid of nutrients which may complicate treatments, and maintains high moisture levels to ensure that carbonates do not solidify in the pot (which could affect plant growth). Vermiculite was presoaked with tap water to saturation. For nodulated treatments, *rhizobia* (applied as TagTeam LCO granular inoculant (Novozymes A/S Bagsvaerd, Denmark)) was evenly mixed in vermiculite before water saturation to a ratio of 500 mL inoculant per four cubic feet (one bag) of vermiculite. Some nodulation did occur in uninoculated pots (most likely from contaminant *rhizobia*), but was presumed inconsequential as the number of nodules formed was miniscule compared to inoculated plants and are thus described as unnodulated. 4.5-inch square pots were then filled with water saturated vermiculite and placed in individual 6" plant saucers for treatment. Two to three seeds were planted per pot and were thinned to a single plant after emergence.

## Experimental Design

Seedlings were watered daily with tap water for the first week, after which nutrient solutions were used for treatment. A full factorial completely randomized design was used for treatments of individual plants, with 2 levels of genotype (efficient or inefficient), 2 levels of nodulation (inoculated with *rhizobia* and thus nodulated or uninoculated with *rhizobia* and thus unnodulated), 3 levels of pH (6.5, 7.5, and 8.4) and 4 levels of calcium carbonate, calculated as the calcium carbonate equivalency (CCE) (0%, 10%, 20%, 30%) (Fig. 1). A 5-12-26 (Nitrogen, Phosphorus and Potassium, respectively) hydroponic fertilizer containing 0.3% chelated iron was used as the nutrient source in all solutions and applied as recommended by the manufacturer's instructions (J.R. Peters, Inc. Allentown, PA). The pH of the solution was adjusted using KOH (5 mol). CAL-FLO liquid limestone (Burnett Lime Company, Inc. Campobello, SC) was used to adjust CCE%. Nutrient solutions were applied 6 times over the course of two weeks after the initial week of tap water. Each 6" tray was filled to saturation to ensure equal amounts of solution were given to each plant. Three single plant replications were used for each treatment combination per experiment. Because both experiments were repeated (for a total of two experimental runs), experimental run (henceforth described as "Run") was included as a blocking factor.

## Growth Chamber Conditions

Growth chamber temperature averaged 25° C for the duration of the experiment with 16 hours of light and 8 hours of dark per 24-hour period. Light intensity during daylight hours averaged 32000 Lux. Humidity was held constant at 70%. Growth chamber environmental conditions were monitored using a HOBO Data Logger (Onset Computer Corporation Bourne, MA) placed 10 cm from the chamber floor.

## Physiological Measurements

Three weeks after planting, plants were removed from the growth chamber for analysis. Plants were visually rated on a 1 to 9 scale with a rating of 1 being a completely healthy plant and a rating of 9 indicating plant death due to iron deficiency, as described by Merry et al. (2019). SPAD value was used as a surrogate for chlorophyll content in this

experiment. SPAD value of the topmost fully expanded trifoliolate was measured using an atLeaf chlorophyll meter (FT Green LLC, Wilmington, DE) and was calculated as the average of three readings, one from each leaflet of the trifoliolate. Plant height was measured from the base of the plant to the topmost node. Roots were then cleaned of vermiculite, and the roots and shoots were separated and dried at 94°C for 3–4 days until completely dry, at which time root dry mass (RDM) and shoot dry mass (SDM) were measured.

## Statistics

A full factorial ANOVA involving all factors and all combinations of their interactions and Run as a blocking factor was performed for each response variable using the *aov* function of the *stats* package (version 4.0.5)(Chambers *et al.*, 1992) in R (version 4.0.3). This was done separately for the Check Genotypes Experiment and the NIL Experiment. Significant differences between levels of a factor were determined using Tukey Honest Significant Differences (HSD) of the means.

## Results

### Genotype

Two separate genotype comparisons were performed in this study. The first, named the Check Genotypes Experiment, compared the cultivar 'Corsoy 79' (which has low resistance to IDC) and the cultivar 'Dawson' (which has high resistance to IDC). The second, named the NIL experiment, compared two isogenic lines that previously demonstrated differences in IDC resistance in field experiments, presumably due to variation at an IDC QTL on chromosome 5 (Merry *et al.* 2019). These lines are described here as the 'low resistant' and 'high resistant' NILs, respectively, based on these field assessments. The known IDC severity difference between the two Check Genotype cultivars is relatively large, so we hypothesized that a good IDC phenotyping platform should differentiate their phenotypes. The IDC severity difference between the two NILs is relatively small, so we hypothesized that only a highly sensitive IDC phenotyping platform would differentiate their phenotypes.

The Check Genotype and NIL lines were each exposed to treatments that have been previously reported to impact IDC severity, including different combinations of pH level, CCE level, and nodulation. IDC symptom severity was assessed using several phenotypic measurements, including visual assessments of leaf coloration, SPAD measurements of leaf chlorophyll content, plant height, RDM, and SDM. Reduced chlorophyll levels and interveinal yellowing of leaves, along with reduced height and biomass, were perceived as symptoms of increased IDC severity in these experiments.

Genotype was a significant source of variation for visual score ( $p < 0.001$ ), height ( $p < 0.001$ ), and SDM ( $p < 0.01$ ) in the Check Genotypes Experiment (Table 1). 'Corsoy 79' had a higher average visual score compared to 'Dawson' (Table 2), indicating greater IDC symptoms, as expected. Furthermore, the 'Dawson' plants exhibited stronger growth and biomass, as the average height of 'Dawson' was significantly higher than 'Corsoy 79', and 'Dawson' also had a significantly higher average SDM than 'Corsoy 79' (Table 2). In the NIL Experiment, a significant difference due to genotype was identified in visual score ( $p < 0.01$ ) and SDM ( $p < 0.001$ ) (Table 1), with the highly resistant NIL having a better visual score and slightly greater shoot dry mass than the NIL with low IDC resistance (Table 3).

### Calcium Carbonate

Calcium carbonate level was a significant source of variation for all phenotypes measured ( $p < 0.001$  for visual score, SPAD value, height, RDM, and SDM) in both the Check Genotypes Experiment and NIL Experiment (Table 1). In the Check Genotypes Experiment, plants with 0% CCE had the lowest average visual score, indicating the least severe IDC symptoms. Plants with 10% or 20% CCE were not statistically significant from one another but had a significantly

higher average visual score than plants with 0% CCE, as well as a significantly lower average visual score than plants with 30% CCE. Plants with 30% CCE had a significantly higher visual score than all other levels of CCE (Table 2), indicating the most severe IDC symptoms. In a similar pattern, SPAD values significantly decreased with increasing CCE levels (Table 2), indicating reduced chlorophyll content in the higher CCE treatments. Furthermore, plants given 0% CCE were significantly taller than plants given 10%, 20%, and 30% CCE of liquid calcium carbonate. However, the heights of plants given liquid calcium carbonate at 10%, 20%, and 30% CCE were not significantly different from each other (Table 2). Root dry mass and SDM decreased with increasing CCE (Table 2).

For the NIL Experiment, plants with 0% CCE had the lowest average visual score, again indicating the least severe IDC symptoms. Plants with 10% CCE, 20% CCE, and 30% CCE had visual scores significantly higher than plants with 0% CCE, but not significantly different from each other (Table 3). Similar patterns were found for SPAD value, height, RDM, and SDM, in which plant averages at 0% CCE were significantly better than plants given 10%, 20%, or 30% CCE treatments (Table 3).

## Effect of pH

Significant differences between levels of pH were found for all response variables in the Check Genotypes Experiment ( $p < 0.05$  for visual score, SPAD value, plant height, RDM, and SDM) (Table 1). pH was not, however, a significant source of variation in the NIL Experiment (Table 1). For visual score in the Check Genotypes Experiment, plants given nutrient solution with a pH adjusted to 6.5 had an average visual score similar to plants treated with a pH of 7.5. Plants treated with a pH of 8.4 had similar visual scores as plants treated with a pH of 7.5, but had significantly higher visual scores than plants given the 6.5 pH treatment (Table 2). For SPAD value, plants treated with a pH of 6.5 were not significantly different than plants treated with a pH of 7.5 or 8.4. However, plants treated with a pH of 7.5 had significantly higher SPAD value than plants treated with a pH of 8.5 (Table 2). Correspondingly, the height of plants treated with a pH of 6.5 and 7.5 were similar, but the pH 7.5 treatment resulted in significantly taller plants than those treated with a pH of 8.4 (Table 2). RDM and SDM followed a more expected pattern, with increased pH decreasing mass in both traits (Table 2). These patterns indicate that changes in pH have a subtle effect on the chlorosis phenotype in the Check Genotypes Experiment which is not always consistent between the different traits that were measured.

## Nodulation Status

In the Check Genotypes Experiment, nodulation status was a significant source of variation for visual score ( $p < 0.001$ ), SPAD value ( $p < 0.001$ ), height ( $p < 0.001$ ), RDM ( $p < 0.001$ ), and SDM ( $p < 0.001$ ) (Table 1). Nodulated plants had a lower visual score on average compared to that of non-nodulated plants (Table 2), indicating increased plant health. Nodulated plants also had higher average SPAD values compared to non-nodulated plants, were significantly taller, and had higher RDM and SDM (Table 2). Significant differences for visual score ( $p < 0.001$ ), SPAD value ( $p < 0.001$ ), height ( $p < 0.001$ ), RDM ( $p < 0.001$ ), and SDM ( $p < 0.001$ ) were also observed between nodulated and non-nodulated plants in the NIL Experiment (Table 1), following similar trends as those in the Check Genotypes Experiment (Table 3).

## Genotype × Nodulation Interaction

The Genotype × Nodulation interaction was significant for visual score ( $p < 0.05$ ), RDM ( $p < 0.01$ ), and SDM ( $p < 0.05$ ) for the Check Genotypes Experiment (Table 1). This interaction was also significant for SDM ( $p < 0.05$ ) in the NIL Experiment (Table 1). For the Check Genotypes Experiment, nodulated genotypes had a similar average visual score. The genotype 'Corsoy 79' had a higher average visual score compared to the average visual score of genotype 'Dawson' when plants were unnodulated. Unnodulated plant visual scores were significantly higher than nodulated

plant visual scores for both genotypes (Fig. 2a), indicating increased plant health with inoculation. For RDM, 'Dawson' when both nodulated and unnodulated had similar root mass to nodulated 'Corsoy 79'. Unnodulated 'Corsoy 79' had a significantly lower root mass than nodulated 'Corsoy 79' and 'Dawson' when nodulated and unnodulated (Fig. 2b), potentially revealing reduced nutrient scavenging abilities in 'Corsoy 79' compared to 'Dawson'. In the Genotype × Inoculation interaction for SDM, 'Corsoy79 and 'Dawson' had significantly higher shoot dry mass when nodulated but were not different from each other. Unnodulated 'Dawson' was significantly lower in SDM than either nodulated genotype. Unnodulated 'Corsoy 79' had the lowest SDM, which was different from all other treatments in the interaction (Fig. 2c).

## Nodulation × CCE Interaction

The Nodulation × CCE% interaction was significant for visual score in both the Check Genotypes Experiment and NIL Experiment ( $p < 0.01$  and  $p < 0.001$ , respectively) (Table 1). For the Check Genotypes Experiment, nodulated plants with 0%, 10%, and 20% CCE as well as unnodulated plants with 0% CCE had similar average visual scores. Nodulated plants with 20% CCE had a similar visual score to nodulated plants with 30% CCE. Unnodulated plants with 10% or 20% CCE had average visual scores similar to nodulated plants with 30% CCE, showing that nodulated plants can withstand higher carbonate pressure. Unnodulated plants with 30% CCE had the highest average visual score but were not significantly different from unnodulated plants with 20% CCE (Fig. 3a). In the NIL Experiment, nodulated and unnodulated plants at 0% CCE had significantly lower visual scores than all other levels (although not significantly different from each other at 0% CCE) (Fig. 4). It is logical that plants with no carbonates would be healthier compared to plants with adjusted CCE% treatments. Nodulated plants at 10%, 20%, and 30% CCE had similar visual scores to each other, which were significantly lower than unnodulated plants at 10%, 20%, and 30% CCE. Unnodulated plants at 10%, 20%, and 30% CCE had similar visual scores, and were significantly higher than all other levels (Fig. 4).

SPAD value ( $p < 0.001$ ) and height ( $p < 0.01$ ) also had a significant Nodulation × CCE% interaction in the Check Genotypes Experiment (Table 1). In general, the SPAD value continued to decrease for unnodulated plants as CCE% increased, while SPAD value decreased from 0–10% CCE but remained stable at higher CCE% for nodulated plants (Fig. 3b), exemplifying the benefits of inoculation with *rhizobia*. Nodulated plants at all CCE% levels and unnodulated plants at 0% CCE were similar in height, and significantly taller than unnodulated plants at 10%, 20%, and 30% CCE (Fig. 3c).

## Genotype × Nodulation × CCE% Interaction

The Genotype × Nodulation × CCE% three-way interaction was significant for RDM ( $p < 0.05$ , Fig. 5a) and SDM ( $p < 0.01$ , Fig. 5b) in the Check Genotypes Experiment (Table 1). In the Check Genotypes Experiment, the unnodulated genotype 'Corsoy 79' had an immediate reduction in RDM and SDM at 10% CCE, which was maintained as CCE levels increased. Nodulated 'Corsoy 79' more gradually decreased RDM and SDM with increasing CCE levels. The genotype 'Dawson' maintained higher RDM and SDM than 'Corsoy 79' when unnodulated at all levels of CCE, with a similar gradual reduction found in inoculated 'Corsoy 79' with increasing CCE. Inoculated 'Dawson' maintained RDM at all levels of CCE and maintained SDM at higher CCE levels after an initial decrease at 10% CCE.

In the NIL experiment, the Genotype × Nodulation × CCE% three-way interaction was significant for visual score ( $p < 0.05$ , Table 1, Fig. 6). Unnodulated plants had higher visual scores (indicating increased symptoms) at all levels of CCE compared to nodulated plants of the same genotype. While the efficient and inefficient NIL had similar visual scores at most levels of Nodulation × CCE, the efficient NIL genotype had slightly lower visual scores when nodulated and at 20% CCE, and when unnodulated and at 10% CCE.

## Discussion

The main objective of this study was to develop a controlled-environment assay to help study the effects of genotype, nodulation, pH, and calcium carbonates on IDC. Ideally, a single combination of specific levels of the previously mentioned stress factors could be used to maximize differences in IDC symptom differences between iron-efficient and inefficient genotypes. This would make it possible to increase the number of replicates and develop a simple “control” and “treatment” experimental design to assess IDC resistance among genotypes. The significant three-way interactions between genotype, nodulation, and CCE% are critical as they indicate potential differentiation between efficient and inefficient genotypes in IDC resistance using this assay. The two genotype comparisons in this study (Check Genotypes vs. NIL Genotypes) displayed their greatest pairwise differences when the CCE was adjusted to 20% (regardless of pH). However, optimal nodulation status and response variable behavior were not the same between genotype comparisons. For example, the greatest difference between Check Genotypes was found for RDM (Fig. 5a) and SDM (Fig. 5b) when the plants were unnodulated and the CCE adjusted to 10% or 20%. However, only visual score had a significant interaction with genotype in the NIL comparison. The greatest differences between NIL genotypes occurred in the visual score when nodulated at 20% CCE (Fig. 6). These findings indicate that optimal treatment conditions and the best response variable to measure for IDC severity can vary for different genotype comparisons when using this method. The optimal experimental parameters are not universal for all genotype comparisons. In our experiments, it is possible that the differential genetics of the Check Genotypes comparison (polygenic) and the NIL Genotypes comparison (single locus) may have influenced the optimal experimental parameters to elicit differences in IDC phenotypes, due to the genes and biological processes influencing the respective comparisons.

As expected, increased pH worsened IDC symptoms in the Check Genotypes for visual score, SPAD value, height, RDM, and SDM (Table 2) but was surprisingly not a significant source of variation in the NIL experiment (Table 3). Varying effects of pH between the Check Genotypes and the NIL Genotypes suggests the existence of multiple types of resistance to iron deficiency. While the check genotypes are affected by both pH and carbonate sources of iron stress, the NIL genotypes overcome iron stress due to pH but not increased carbonates. Iron reduction in the rhizosphere is the primary mechanism of iron acquisition in Strategy I plants (Marschner and Romheld, 1994). It is possible that the NIL genotypes are better able to reduce  $\text{Fe}^{3+}$  to  $\text{Fe}^{2+}$  in the rhizosphere than the check genotypes, and are thus less affected by higher soil pH per se.

It was expected that a significant interaction would be found between pH and CCE%, however no significance was found for this interaction in either experiment for any measured traits. In fields with calcareous soils, high soil pH often results in the release of bicarbonates (Hansen et al., 2003; Inskeep and Bloom, 1987). Bicarbonate release potentially has a greater effect on IDC severity than pH per se, but in field conditions this is nearly impossible to decouple. Further dissection of the relationship between carbonates and pH using this assay could help to improve our understanding of IDC in soybean.

Iron deficiency symptoms for all traits occurred with the treatment of calcium carbonates in both the Check Genotypes Experiment (Table 2) and the NIL Experiment (Table 3). While symptoms showed increased severity for the check genotypes with increases in CCE%, no significant differences were found in any traits in the NIL Experiment among CCE levels higher than 10%. It is possible that the NIL genotypes were better able to maintain iron homeostasis with increasing carbonate levels. Alternatively, they may be immediately overwhelmed with the addition of 10% CCE and maintain their physiological limit at higher levels of CCE. This could be discerned by further increasing the percent CCE to see if symptoms become more severe or are still maintained, although in field conditions CCE rarely exceeds 30%.



As an often-overlooked factor in IDC studies, a discussion on symbiosis is warranted here. Inoculation with *rhizobia* significantly improved all measured traits in the Check Genotypes Experiment (Table 2) and NIL Genotypes Experiment (Table 3). This is unsurprising when considered alone, as nodulation and nitrogen fixation by soybean has been well documented to improve yield more than nitrogen fertilizer (Beard and Hoover, 1971; Sorensen and Penas, 1978; Sogut, 2006).

Nodulation was the only factor that was a component in all significant interactions in this study (Table 1). Of particular interest and importance for IDC are the significant two-way interaction of nodulation with CCE and the significant three-way interaction between nodulation, genotype and CCE. For all significant interactions of nodulation with CCE, the addition of calcium carbonates exacerbated IDC symptoms. However, unnodulated plants had more severe IDC symptoms than nodulated plants as CCE% increased, similar to findings by Soerensen et al. (1988). It was assumed that nitrogen deficiency was not the cause of this observation because differences between efficient and inefficient genotypes did not occur until CCE% was increased. With advances in molecular techniques, a better dissection of the relationship between nodulation and IDC stress may be timely.

Investigating genotypes with small differences in resistance to IDC in a controlled environment is novel. Previous controlled environment IDC studies have focused on genotypes with sizeable differences in IDC resistance (Coulombe et al., 1984; Dragonuk et al., 1989; Lin et al., 1998; O'Rourke *et al.*, 2007; Peiffer *et al.*, 2012). While the NILs used in this study did not have a significant interaction with genotype and pH or CCE% in any of the individual symptoms of IDC, the interaction of genotype  $\times$  inoculation  $\times$  CCE level was significant with visual score. While the efficient and inefficient NILs had similar visual scores at many treatment levels, the differentiation found when nodulated and at 20% CCE and when unnodulated and at 10% CCE followed the expected pattern of the inefficient genotype having a higher visual score indicating less resistance to IDC. The one-point difference in visual score found when nodulated and at 20% CCE in this study is close to the 1.5-point difference for the NIL pair found by Merry et al. (2019) in field conditions.

The significant difference in SDM between the NIL genotypes is intriguing. The NIL pair used in this study is highly isogenic ( $F_{11}$ -derived) and developed to express differences in resistance to IDC at a single genetic locus, thus any physiological differences between the NIL genotypes should be considered as a potential mechanism for IDC resistance. Because most studies focus on resultant phenotypes after IDC stress, investigating differences in pre-stress plant physiology to identify potential iron efficiency traits may add novel information to this area of study.

It is important to note that the method described here is practical for studying IDC response differences among a relatively small number of genotypes. However, it is unlikely that further refinements could be made to successfully score a large number of genotypes for IDC resistance, as is routinely done in a breeding program, using this method. There are several reasons for this conclusion. First, the number of replicates required to accurately rate IDC severity makes space requirements limiting as the number of genotypes increases. Second, the time required to apply nutrient treatments and measure traits on a large number of genotypes in controlled conditions is far more expensive than visually rating plants in an IDC field nursery or taking automated measurements with drone images from field data (Dobbels and Lorenz, 2019). Lastly, a "universal" optimal treatment for a large set of genotypes would not give accurate IDC resistance ratings using the approach described here. This is indicated by the different optimal combination of inoculation and CCE that were identified for the Check Genotypes and NIL Genotypes for inducing IDC symptoms. While these limitations make examining many genotypes impractical, this method can still be utilized for advancing our understanding of the genetics and physiology of IDC through comparisons of efficient and inefficient genotypes, as well as decoupling the effects of pH and CCE on IDC.

## Conclusion

IDC symptoms were successfully induced in the Check Genotypes Experiment as well as the NIL Experiment, indicating the success of using a liquid CaCO<sub>3</sub> source and this assay for inducing IDC in controlled environments. Sensitivity of the assay was highest when comparing 'Corsoy 79' and 'Dawson', which have large differences in IDC resistance. The greatest significant differences between 'Corsoy 79' and 'Dawson' were shown in the RDM and SDM phenotypes when plants were unnodulated and treated with 10% CCE. Meanwhile, using this approach to identify IDC differences among genotypes with small resistance differences may require more replication and optimization of the experimental treatments such as alternative levels of CCE. Interestingly, CCE and pH impacted IDC severity independently, as indicated by a lack of a significant interaction between the two factors, and pH was not a significant factor in the NIL Experiment for any measured trait. Nodulation reduced IDC symptoms in both pairs of genotypes and is valuable to include as a factor when examining the physiological response of soybean to iron stress.

## Declarations

### *Ethics approval and consent to participate*

All authors read and approved the manuscript.

### *Consent for publication*

All authors agreed to publish this manuscript.

### *Availability of data and materials*

The data generated by this study is available upon the approval of Aaron Lorenz and Bob Stupar from the University of Minnesota Department of Agronomy and Plant Genetics.

### *Competing interests*

The authors declare that they have no competing interests.

### *Funding*

This work was supported by the United Soybean Board project #2120-172-0145. Dr. Ryan Merry was supported by a United Soybean Board Graduate Fellowship (project #1620-732-7228).

### *Author's contributions*

All authors made significant contributions to this research. RM conceived the research ideas and designed the experiments under the guidance of AL and RS. RM and ME collected the data conducted the data analysis. RM drafted the manuscript. ME, AL, and RS edited and revised the manuscript. All authors read and approved the final manuscript.

### *Acknowledgements*

We acknowledge the United Soybean Board and Minnesota Soybean Research and Promotion Council for funding this research.

## References

1. Beard BH, Hoover RM (1971) Effect of Nitrogen on Nodulation and Yield of Irrigated Soybeans. *Agronomy Journal* 63(5), 815-816.
2. Bloom, P.R., Rehm, G.W., Lamb, J.A., & Scobbie, A.J. (2011). Soil Nitrate is a Causative Factor in Iron Deficiency Chlorosis in Soybeans. *Soil Science Society of America Journal* 75(6), 2233-2241.
3. Coulombe, B.A., Chaney, R.L., & Wiebold, W.J. (1984). Bicarbonate Directly Induces Iron Chlorosis in Susceptible Soybean Cultivars. *Soil Science Society of America Journal* 48, 1297-1301
4. Dobbels, A.A., & Lorenz, A.J. (2019). Soybean iron deficiency chlorosis high-throughput phenotyping using an unmanned aircraft system. *Plant Methods* 15(1), 1-9 doi: <https://doi.org/10.1186/s13007-019-0478-9>
5. Dragonuk, M.B., Fehr, W.R., & Jessen, H.J. (1989). Nutrient-solution techniques for evaluation of iron efficiency in soybean. *Journal of Plant Nutrition* 12, 871-880
6. Fairbanks, D.J., Orf, J.H., Inskeep, W.P., & Bloom, P.R. (1987). Evaluation of Soybean Genotypes for Iron-Deficiency Chlorosis in Potted Calcareous Soil. *Crop Science* 27(5), 953-957.
7. Goos, R.J., & Johnson, B.E. (2000). A comparison of three methods for reducing iron-deficiency chlorosis in soybean. *Agronomy Journal* 92(6), 1135–1139. doi:10.2134/agronj2000.9261135x
8. Hansen, N.C., Schmitt, M.A., Andersen, J.E., & Strock, J.S. (2003). Iron deficiency of soybean in the Upper Midwest and associated soil properties. *Agronomy Journal* 95(6), 1595–1601. doi:10.2134/agronj2003.1595
9. Inskeep, W.P., & Bloom, P.R. (1987). Soil chemical factors associated with soybean chlorosis in Calciaquolls of Western Minnesota. *Agronomy Journal* 79(5), 779–786. doi:10.2134/agronj1987.00021962007900050005x
10. Kaiser, D.E., Lamb, J.A., Bloom, P.R., & Hernandez, J.A. (2014). Comparison of field management strategies for preventing iron deficiency chlorosis in soybean. *Agronomy Journal* 106(6), 1963–1974. doi:10.2134/agronj13.0296
11. Lin, S.F., Baumer, J.S., Ivers, D., Cianzio, S.R., & Shoemaker, R.C. (1998). Field and Nutrient Solution Tests Measure Similar Mechanisms Controlling Iron Deficiency Chlorosis in Soybean. *Crop Science* 38(1), 254-259.
12. Marschner, H., & Römheld, V., (1994). Strategies of plants for acquisition of iron. *Plant and Soil* 165(2), 261–274.
13. Merry, R., Butenhoff, K., Campbell, B.W., Michno, J.M., Wang, D., Orf, J.H., Lorenz, A., & Stupar, R.M. (2019). Identification and Fine-Mapping of a Soybean Quantitative Trait Locus on Chromosome 5 Conferring Tolerance to Iron Deficiency Chlorosis. *The Plant Genome* 12(3), 190007. doi: 10.3835/plantgenome2019.01.0007
14. Merry, R., Dobbels, A.A., Sadok, S., Naeve, S., Stupar, R.M., & Lorenz, A.J. Iron Deficiency in Soybean.
15. O'Rourke, J.A., Charlson, D.V., Gonzalez, D.O., Vodkin, L.O., Graham, M.A., Cianzio, S.R., Grusak, M.A., & Shoemaker, R.C. (2007). Microarray analysis of iron deficiency chlorosis in near-isogenic soybean lines. *BMC Genomics* 8(1), 476. doi:10.1186/1471-2164-8-476
16. Peiffer, G.A., King, K.E., Severin, A.J., May, G.D., Cianzio, S.R., Lin, S.F., Lauter N.C., & Shoemaker R.C. (2012). Identification of candidate genes underlying an iron efficiency quantitative trait locus in soybean. *Plant Physiology* 158(4), 1745–1754. doi:10.1104/pp.111.189860
17. Rogovska, N.P., Blackmer, A.M., & Mallarino, A.P. (2007). Relationships between soybean yield, soil pH, and soil carbonate concentration. *Soil Science Society of America Journal* 71(4), 1251-1256.
18. Soerensen, K.U., Terry, R.E., Jolley, V.D., Brown, J.C., & Vargas, M.E. (1988). The interaction of iron-stress response and root nodules in iron efficient and inefficient soybeans. *Journal of Plant Nutrition* 11(6-11), 853-862. doi: 10.1080/01904168809363850

19. Soerensen, K.U., Terry, R.E., Jolley, V.D., & Brown, J.C. (1989). Iron-stress response of inoculated and non-inoculated roots of an iron inefficient soybean cultivar in a split-root system. *Journal of Plant Nutrition* 12(4), 437-447. doi: 10.1080/01904168909363964
20. Sogut T (2006) Rhizobium inoculation improves yield and nitrogen accumulation in soybean (*Glycine max*) cultivars better than fertiliser. *New Zealand Journal of Crop and Horticultural Science*, 34(2), 115-120, doi: 10.1080/01140671.2006.9514395
21. Sorensen RS, Penas EJ (1978) Nitrogen Fertilization of Soybeans. *Agronomy Journal* 70(2), 213-216
22. Wiersma, J.V. (2005). High rates of Fe-EDDHA and seed iron concentration suggest partial solutions to iron deficiency in soybean. *Agronomy Journal* 97(3), 924-934.
23. Xu, Z., Cannon, S. B., & Beavis, W. D. (2020). Applications of spatial models to ordinal data. *bioRxiv* doi: <https://doi.org/10.1101/2020.09.21.306001>

## Tables

### Table 1. Summary of significant effects in the “Check Genotypes Experiment” and the “NIL Experiment”.

Significance code followed by ‘CD’ indicates significance in the Check Genotypes Experiment. Significance code followed by ‘NIL’ indicates significance in the NIL Experiment. Significance codes: (\*\*\*)  $p < 0.001$ , (\*\*)  $p < 0.01$ , (\*)  $p < 0.05$ .

Source of Variation	Visual Score	SPAD Value	Height	Root Dry Mass	Shoot Dry Mass
Genotype	***CD/**NIL		***CD		**CD/**NIL
Inoculation	***CD/***NIL	***CD/***NIL	***CD/***NIL	***CD/***NIL	***CD/***NIL
pH	*CD	*CD	*CD	*CD	*CD
CCE	***CD/***NIL	***CD/***NIL	***CD/***NIL	***CD/***NIL	***CD/***NIL
Genotype × pH					
Genotype × CCE					
Genotype × Inoculation	*CD			**CD	*CD
Genotype × Inoculation × CCE	*NIL			*CD	**CD
Genotype × Inoculation × pH					
Genotype × CCE × pH					
CCE × pH					
Inoculation × pH					
Inoculation × CCE	**CD/*NIL	***CD	**CD		*NIL
Inoculation × CCE × pH					
Genotype × Inoculation × CCE × pH					
Run	***NIL	***CD/**NIL	***CD/***NIL	***CD/***NIL	***CD/**NIL

### Table 2. Main Effects of the “Check Genotypes Experiment”

Main Effects of the Check Genotypes Experiment and means and standard error (S.E.) for each measured trait. Significant differences between means were determined using Tukey’s HSD test and are indicated with differing letter

superscripts.

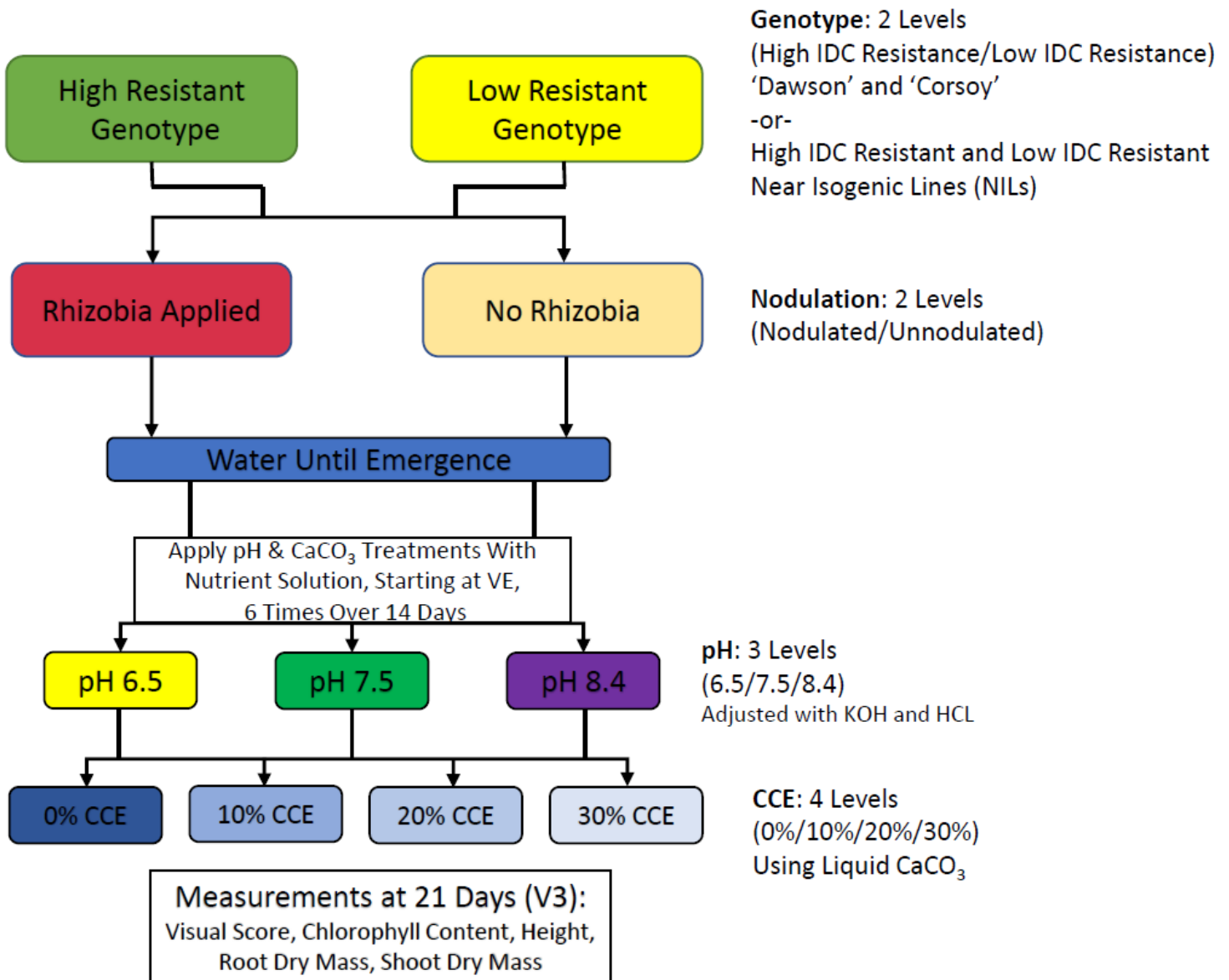
Source of Variation	Level	Visual Score (1-9 Scale)		SPAD Value		Height (cm)		Root Dry Mass (g)		Shoot Dry Mass (g)	
		Mean	S.E.	Mean	S.E.	Mean	S.E.	Mean	S.E.	Mean	S.E.
Genotype	'Corsoy 79'	4.5 <sup>a</sup>	0.16	32.3 <sup>n.s.</sup>	0.50	11.1 <sup>a</sup>	0.23	0.62 <sup>n.s.</sup>	0.02	1.1 <sup>a</sup>	0.04
	'Dawson'	3.8 <sup>b</sup>	0.13	31.9 <sup>n.s.</sup>	0.41	12.0 <sup>b</sup>	0.22	0.65 <sup>n.s.</sup>	0.02	1.2 <sup>b</sup>	0.04
Inoculated with Rhizobia	Yes	3.5 <sup>a</sup>	0.12	33.7 <sup>a</sup>	0.37	12.4 <sup>a</sup>	0.24	0.69 <sup>a</sup>	0.02	1.3 <sup>a</sup>	0.04
	No	4.8 <sup>b</sup>	0.16	30.8 <sup>b</sup>	0.50	10.8 <sup>b</sup>	0.20	0.58 <sup>b</sup>	0.02	1.0 <sup>b</sup>	0.04
pH	6.5	3.9 <sup>a</sup>	0.19	32.4 <sup>ab</sup>	0.59	11.7 <sup>ab</sup>	0.30	0.66 <sup>a</sup>	0.03	1.2 <sup>a</sup>	0.06
	7.5	4.1 <sup>ab</sup>	0.18	33.1 <sup>a</sup>	0.55	11.8 <sup>a</sup>	0.28	0.65 <sup>ab</sup>	0.03	1.2 <sup>a</sup>	0.05
	8.5	4.5 <sup>b</sup>	0.18	31.4 <sup>b</sup>	0.53	11.2 <sup>b</sup>	0.26	0.59 <sup>b</sup>	0.03	1.1 <sup>b</sup>	0.05
CCE%	0%	2.8 <sup>a</sup>	0.14	36.7 <sup>a</sup>	0.47	12.8 <sup>a</sup>	0.31	0.71 <sup>a</sup>	0.04	1.6 <sup>a</sup>	0.07
	10%	4.1 <sup>b</sup>	0.19	32.0 <sup>b</sup>	0.51	11.5 <sup>b</sup>	0.34	0.66 <sup>ab</sup>	0.03	1.1 <sup>b</sup>	0.05
	20%	4.5 <sup>b</sup>	0.20	30.6 <sup>bc</sup>	0.60	11.2 <sup>b</sup>	0.29	0.62 <sup>bc</sup>	0.03	1.0 <sup>bc</sup>	0.05
	30%	5.3 <sup>c</sup>	0.20	29.9 <sup>c</sup>	0.67	10.9 <sup>b</sup>	0.31	0.55 <sup>c</sup>	0.03	0.9 <sup>c</sup>	0.04

### Table 3. Main Effects of the NIL Genotypes Experiment

Main Effects of the NIL Genotypes Experiment and means and standard error (S.E.) for each measured trait. Significant differences between means calculated with Tukey's HSD test and are indicated with differing letter superscripts.

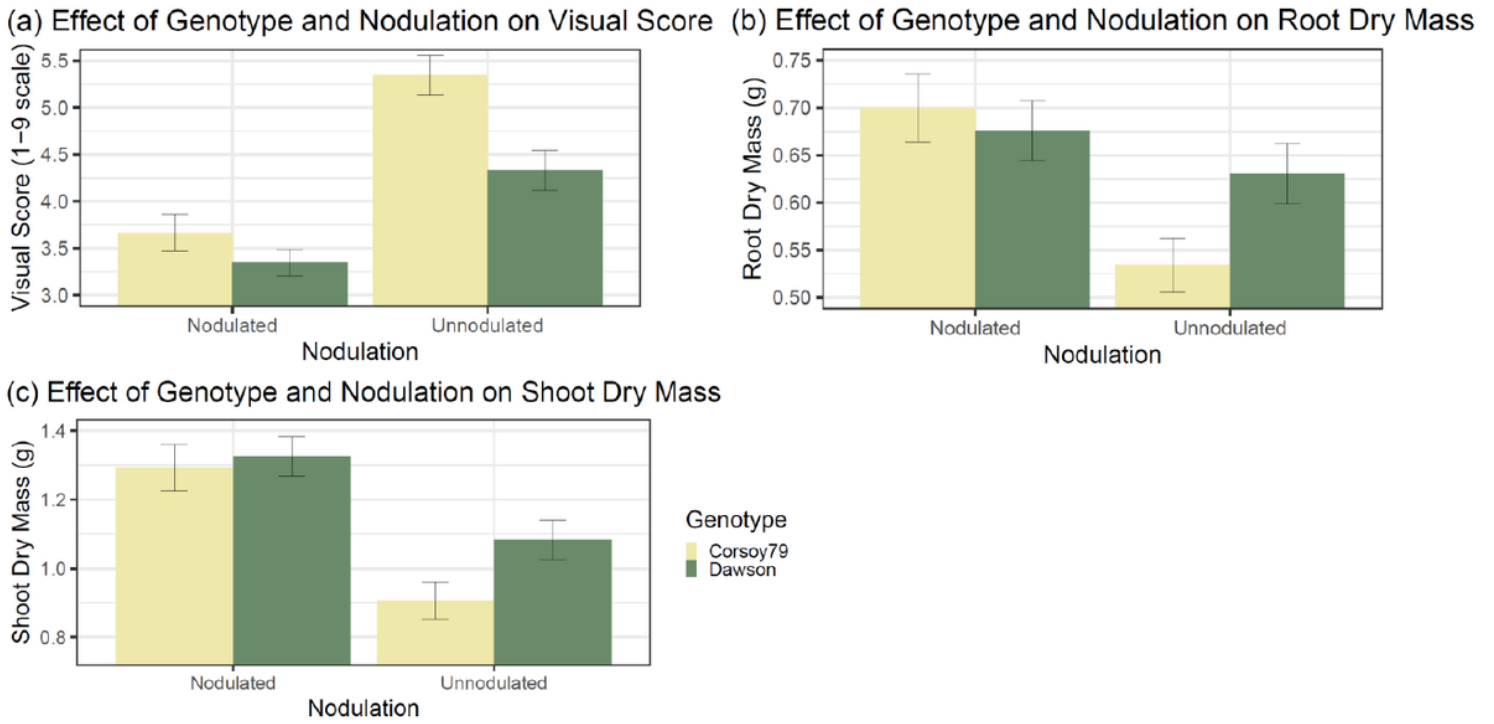
Source of Variation	Level	Visual Score (1-9 Scale)		SPAD Value		Height (cm)		Root Dry Mass (g)		Shoot Dry Mass (g)	
		Mean	S.E.	Mean	S.E.	Mean	S.E.	Mean	S.E.	Mean	S.E.
Genotype	'Susceptible NIL'	4.1 <sup>a</sup>	0.14	26.7 <sup>n.s.</sup>	0.53	10.3 <sup>n.s.</sup>	0.18	1.4 <sup>n.s.</sup>	0.09	1.5 <sup>a</sup>	0.06
	'Tolerant NIL'	3.8 <sup>b</sup>	0.15	26.4 <sup>n.s.</sup>	0.53	10.6 <sup>n.s.</sup>	0.18	1.3 <sup>n.s.</sup>	0.09	1.6 <sup>b</sup>	0.07
Inoculated with Rhizobia	Yes	3.0 <sup>a</sup>	0.11	30.1 <sup>a</sup>	0.31	11.3 <sup>a</sup>	0.19	1.6 <sup>a</sup>	0.1	1.7 <sup>a</sup>	0.07
	No	4.9 <sup>b</sup>	0.14	22.6 <sup>b</sup>	0.5	9.6 <sup>b</sup>	0.14	1.2 <sup>b</sup>	0.08	1.3 <sup>b</sup>	0.06
pH	6.5	3.8 <sup>n.s.</sup>	0.17	26.1 <sup>n.s.</sup>	0.66	10.7 <sup>n.s.</sup>	0.22	1.5 <sup>n.s.</sup>	0.12	1.5 <sup>n.s.</sup>	0.07
	7.5	4.0 <sup>n.s.</sup>	0.17	26.5 <sup>n.s.</sup>	0.6	10.4 <sup>n.s.</sup>	0.21	1.3 <sup>n.s.</sup>	0.09	1.5 <sup>n.s.</sup>	0.08
	8.5	4.0 <sup>n.s.</sup>	0.2	27.1 <sup>n.s.</sup>	0.69	10.3 <sup>n.s.</sup>	0.24	1.4 <sup>n.s.</sup>	0.12	1.5 <sup>n.s.</sup>	0.09
CCE%	0%	2.0 <sup>a</sup>	0.14	30.5 <sup>a</sup>	0.69	11.9 <sup>a</sup>	0.27	2.0 <sup>a</sup>	0.19	2.7 <sup>a</sup>	0.07
	10%	4.4 <sup>b</sup>	0.15	25.7 <sup>b</sup>	0.68	10.2 <sup>b</sup>	0.25	1.2 <sup>b</sup>	0.09	1.2 <sup>b</sup>	0.04
	20%	4.8 <sup>b</sup>	0.17	24.9 <sup>b</sup>	0.67	9.9 <sup>b</sup>	0.21	1.2 <sup>b</sup>	0.09	1.1 <sup>b</sup>	0.03
	30%	4.7 <sup>b</sup>	0.17	25.1 <sup>b</sup>	0.77	9.9 <sup>b</sup>	0.22	1.2 <sup>b</sup>	0.09	1.1 <sup>b</sup>	0.04

## Figures



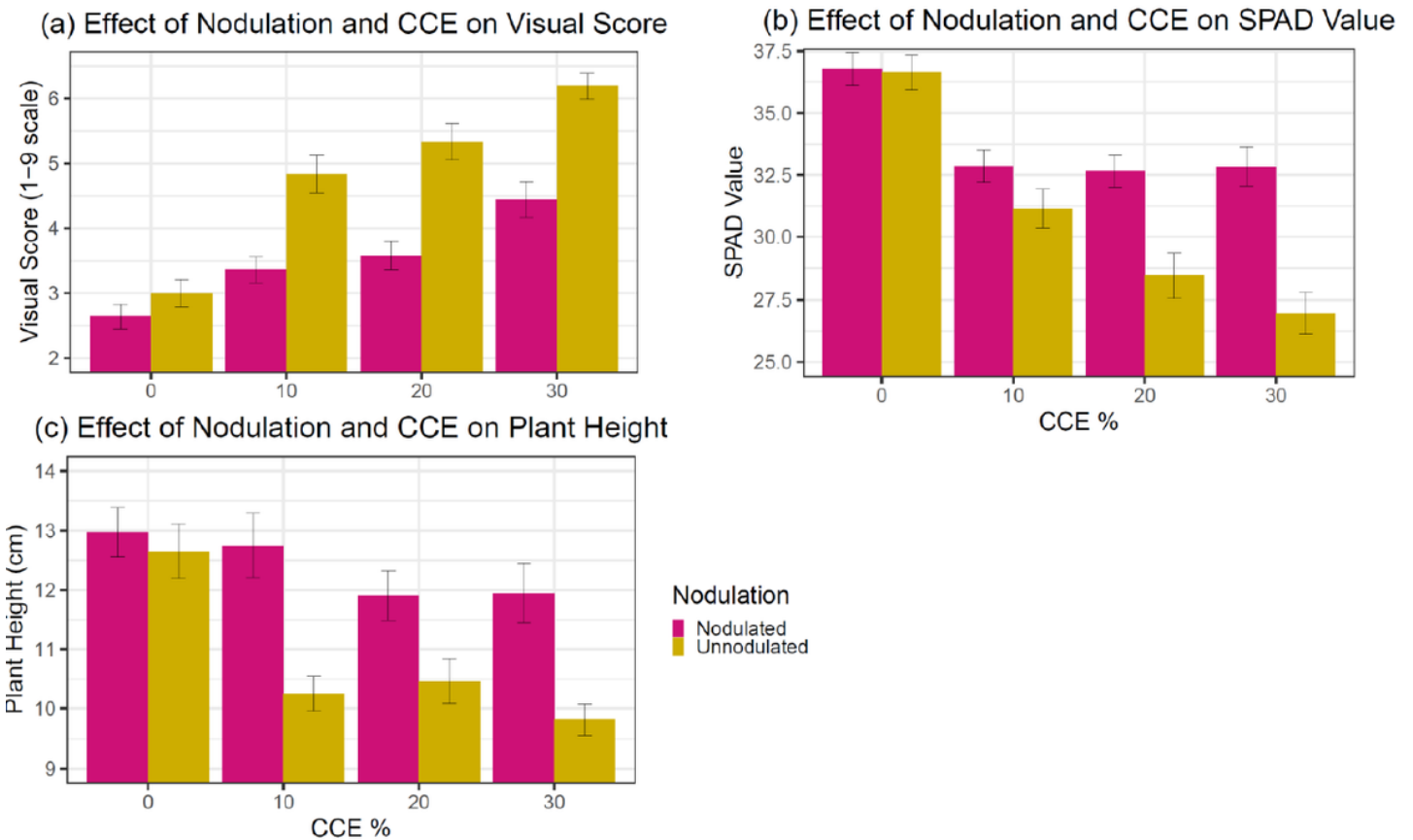
**Figure 1**

Overview of the full factorial experimental design and method. Each genotype was either inoculated with rhizobia at planting (thus resulting in nodulated plants) or uninoculated. One week after planting, a nutrient solution with pH and CCE treatment was applied to respective plants three times weekly for two weeks. After three weeks (21 days) plants were assessed for visual score, SPAD value, height, root dry mass, and shoot dry mass.



**Figure 2**

Effect of Genotype and Nodulation on Visual Score (a), Root Dry Mass (b), and Shoot Dry Mass (c) in the Check Genotypes Experiment. Error bars represent +/- 1 SE.

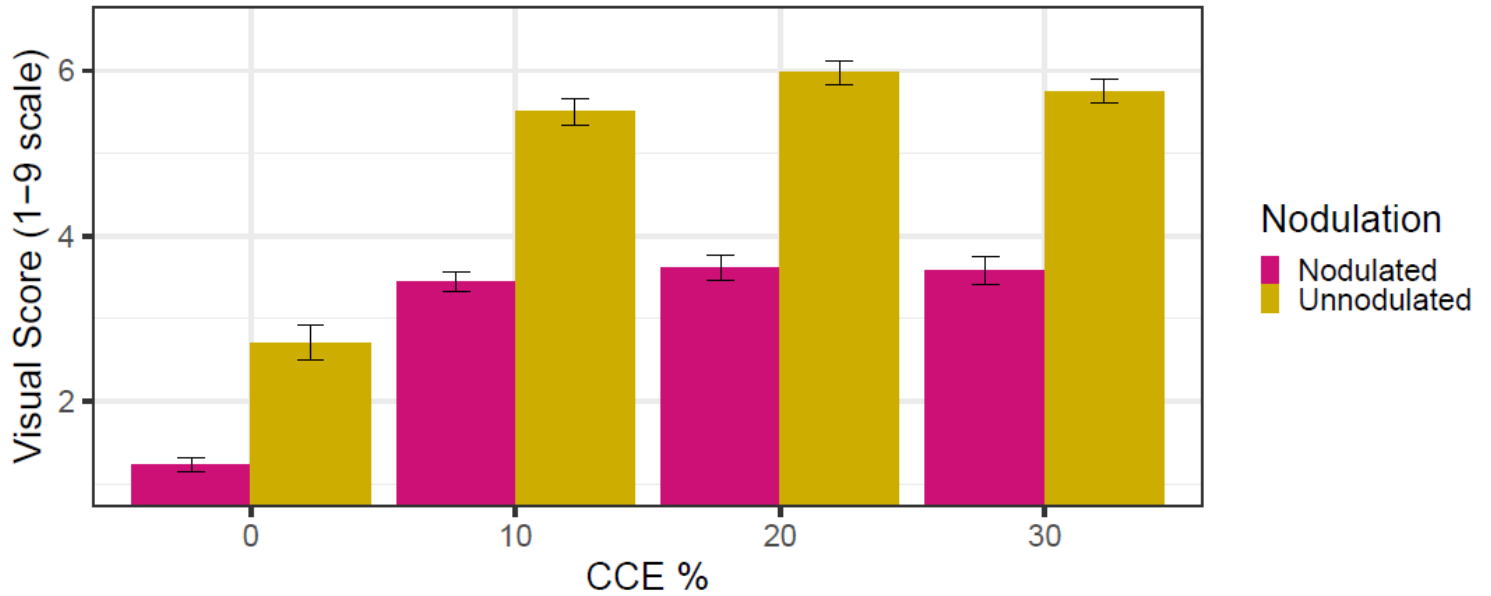


**Figure 3**



Effect of Nodulation and Calcium Carbonate Equivalent on Visual Score (a), SPAD Value (b), and Plant Height (c) in the Check Genotypes Experiment. Error bars represent +/- 1 SE.

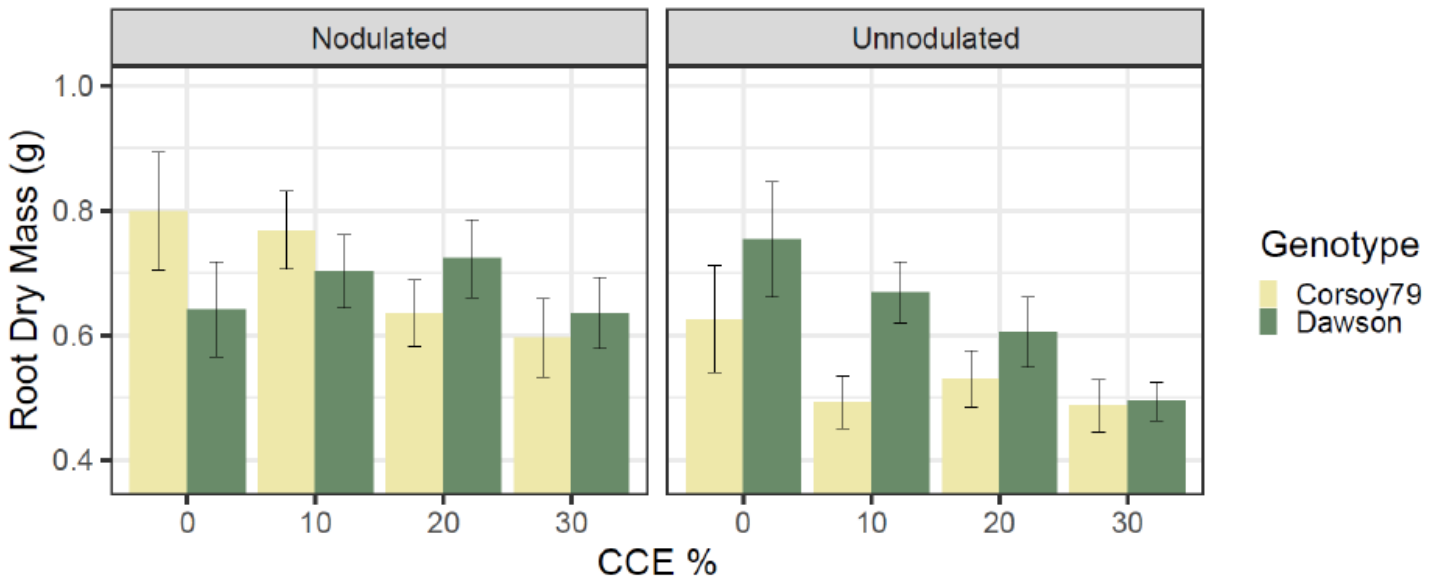
## Effect of Nodulation and CCE on Visual Score in NIL Experiment



**Figure 4**

Effect of Nodulation and Calcium Carbonate Equivalent on Visual Score in the NIL Genotypes Experiment. Error bars represent +/- 1 SE.

(a) Effect of Genotype, Nodulation, and CCE on Root Dry Mass



(b) Effect of Genotype, Nodulation, and CCE on Shoot Dry Mass

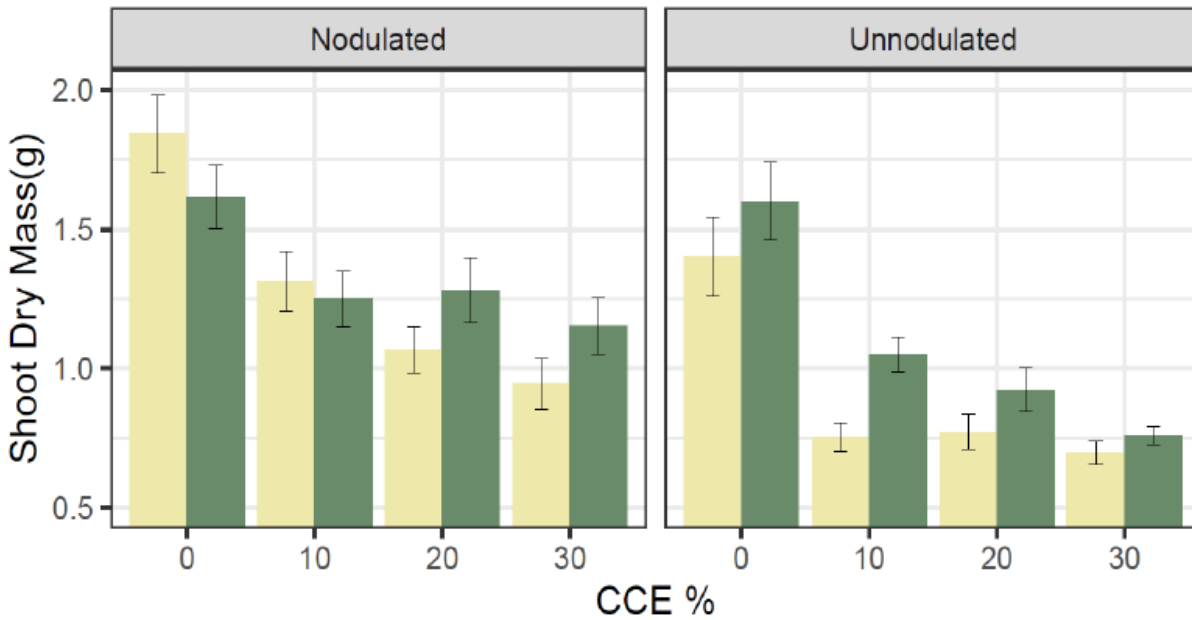
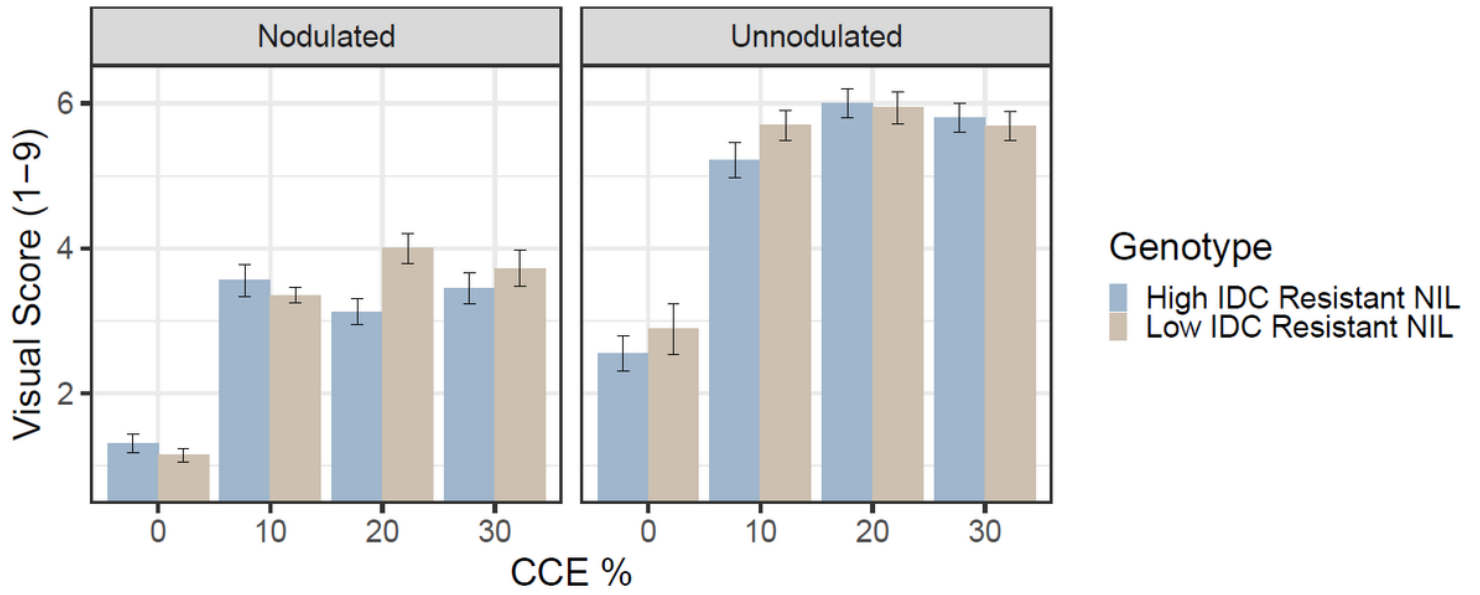


Figure 5

Effect of Genotype, Nodulation, and Calcium Carbonate Equivalent on (a) Root Dry Mass and (b) Shoot Dry Mass in the Check Genotypes Experiment. Error bars represent  $\pm 1$  SE.

# Effect of Genotype, Nodulation, and CCE on Visual Score



**Figure 6**

Effect of Genotype, Nodulation, and Calcium Carbonate Equivalent on Visual Score in the NIL Genotypes Experiment. Error bars represent +/- 1 SE.