

Decreased Thalamic Monoamine Availability in Drug-Induced Parkinsonism

Yoon-Sang Oh

The Catholic University of Korea

Sang-Won Yoo

The Catholic University of Korea

Chul Hyung Lyoo

Yonsei University College of Medicine

Joong-Seok Kim (✉ neuronet@catholic.ac.kr)

The Catholic University of Korea

Research Article

Keywords: Drug-induced parkinsonism, normal control, thalamus, striatal monoamine, Parkinson's disease

Posted Date: October 13th, 2021

DOI: <https://doi.org/10.21203/rs.3.rs-954639/v1>

License:  This work is licensed under a Creative Commons Attribution 4.0 International License.

[Read Full License](#)

Version of Record: A version of this preprint was published at Scientific Reports on March 8th, 2022. See the published version at <https://doi.org/10.1038/s41598-022-07773-5>.

Abstract

Drug-induced parkinsonism (DIP) is caused by a dopamine receptor blockade and is a major cause of misleading diagnosis of Parkinson's disease (PD). Striatal dopamine activity has been investigated widely in DIP; however, most studies with dopamine transporter imaging have focused on the clinical characteristics and prognosis. This study investigated differences in striatal subregional monoamine availability among patients with DIP, normal controls, and patients with early PD. Thirty-five DIP patients, the same number of age-matched PD patients, and 46 healthy controls were selected for this study. Parkinsonian motor status was examined. Brain magnetic resonance imaging and positron emission tomography with ^{18}F -N-(3-fluoropropyl)-2beta-carbon ethoxy-3beta-(4-iodophenyl) nortropane were performed, and the regional standardized uptake values were analyzed with a volume-of-interest template and compared among the groups. Females were more predominant in the DIP group than in the PD group. Parkinsonian motor symptoms were similar in the DIP and PD groups. Monoamine availability in the thalamus of the DIP group was lower than that of the normal controls and similar to that of the PD group. In other subregions (putamen, globus pallidus, and ventral striatum), monoamine availability in the DIP group and normal controls did not differ and was higher than that in the PD group. These findings suggest that low monoamine availability in the thalamus could be an imaging biomarker of DIP.

Introduction

Drug-induced parkinsonism (DIP) is the second most common cause of parkinsonism. The prevalence of DIP among individuals with parkinsonism varies from 15–40% [1, 2]. The incidence rate of DIP is 3.3 to 13.9 per 100,000 person-years [2, 3]. Dopamine receptor blocking agents such as prokinetics, antipsychotics, and antidepressants are the most common offending drugs [4]. Calcium channel blockers, antiarrhythmics, antiepileptics, and antihistamines also can cause DIP [4].

The pathophysiological mechanism of DIP is regarded as a side effect of drugs that produce a D2 receptor blockade in the striatum [4]. Therefore, discontinuation of the offending drug resolves or improves parkinsonism. Dopamine transporter imaging is a useful tool for differentiating Parkinson's disease (PD) from DIP and other tremor disorders [5]. In DIP patients, striatal dopamine uptake usually is normal, whereas PD patients show decreased dopamine activity, especially in the posterior putamen. Many studies have shown that dopamine transporter imaging has high sensitivity and specificity in differentiating PD from DIP [6]. However, few studies have examined whether striatal and extra-striatal monoamine transporter uptake in DIP is similar to that in normal healthy subjects.

We hypothesized that patients with DIP have different striatal monoamine availability patterns than normal controls. We investigated striatal subregional monoamine availability in patients with DIP and normal controls and analyzed differences in the striatal monoamine patterns of DIP patients, normal controls, and PD patients.

Results

Totals of 35 patients with DIP, 35 age-matched patients with PD, and 46 healthy controls were enrolled in this study. The mean age was similar among the groups: DIP (69.8 ± 10.5 years), normal controls (69.3 ± 2.8 years), and PD (69.8 ± 11.0 years) ($p = 0.953$). Female sex was more predominant in the DIP group than in the PD and normal control groups. The frequencies of hypertension, diabetes mellitus, and smoking did not differ among the three groups. The mean UPDRS total and part III scores in the DIP group were 20.0 ± 14.4 , and 13.1 ± 8.1 , respectively, which did not differ from the mean UPDRS total (23.6 ± 13.4 , $p = 0.283$) and part III scores (14.0 ± 8.2 , $p = 0.642$) in the PD group. The mean modified Hoehn and Yahr stage scores in the DIP group (2.0 ± 0.7) and PD group (1.8 ± 0.6) did not differ ($p = 0.219$) (Table 1).

Table 1
Clinical characteristics of the three groups.

	DIP (n = 35)	PD (n = 35)	Normal controls (n = 46)	P value	Post hoc test
Age, years, mean \pm SD**	69.8 \pm 10.5	69.8 \pm 11.0	69.3 \pm 2.8	0.953	DIP = NC = PD
Sex, male (%)*	7 (20.0)	19 (54.3)	24 (52.2)	0.004	DIP < NC = PD
Disease duration, years	1.2 \pm 1.5	1.3 \pm 2.3	-	0.781	-
Hypertension (%)*	11 (31.4)	14 (40.0)	22 (47.8)	0.329	DIP = NC = PD
Diabetes mellitus (%)*	12 (34.3)	8 (22.9)	11 (23.9)	0.478	DIP = NC = PD
Smoking status*				0.595	DIP = NC = PD
Non- or ex-smoker (%)	34 (97.1)	32 (91.4)	43 (93.5)		
Current smoker (%)	1 (2.9)	3 (8.6)	3 (6.5)		
UPDRS part III score	13.1 \pm 8.1	14.0 \pm 8.2	-	0.642	-
UPDRS total score	20.0 \pm 14.4	23.6 \pm 13.4	-	0.283	-
Hoehn and Yahr stage	2.0 \pm 0.7	1.8 \pm 0.6	-	0.219	-
Values represent mean with standard deviation or number of patients (percentage).					
Analyses were performed using independent sample t-testing, * χ^2 testing, and ** one way analysis of variance.					
UPDRS: Unified Parkinson's Disease Rating Scale					

Among the drugs causing DIP, antipsychotics were the most common ($n = 18$, 51.4%), followed by prokinetics ($n = 15$, 42.9%) and antidepressants ($n = 2$, 5.7%). The most frequent offending drugs were

levosulpiride (n = 12, 34.3%) and aripiprazole (n = 9, 25.7%) (Table 2). The parkinsonism of all DIP patients had resolved completely at 12 months after cessation of the offending drug.

Table 2
Offending drugs in patients with drug-induced parkinsonism

	Number of patients (n = 35)
Gastro-prokinetics	15
levosulpiride	12
mosapride	3
Antipsychotics	18
aripiprazole	9
olanzapine	3
risperidone	2
amisulpride	1
blonanserin	1
quetiapine	1
perphenazine	1
Antidepressants	2
fluvoxamine	1
duloxetine	1

The SUVRs of the ¹⁸F-FP-CIT PET images were analyzed. The SUVRs of all subregions in the PD group were lower than those in the normal control group. The DIP group had SUVRs similar to those of the normal controls and higher than those of the PD group in the putamen, globus pallidus, ventral striatum, and thalamus. The SUVR of the thalamus in the DIP group (1.43 ± 0.19) was significantly lower than that in the normal control group (1.62 ± 0.13 , $p < 0.001$) (Table 3, Figure 1).

Table 3
Comparison of standardized uptake value ratios of the three groups.

Striatal subregion	DIP (n = 35)	PD (n = 35)	Normal controls (n = 46)	P value	Post hoc test
Caudate	4.69 (1.86)	3.92 (1.49)	4.85 (1.35)	0.012	NC > PD
Right	4.88 (1.85)	4.04 (1.52)	4.90 (1.50)	0.022	NC > PD
Left	4.51 (1.90)	3.80 (1.49)	4.80 (1.30)	0.009	NC > PD
Anterior caudate	4.95 (2.11)	4.13 (1.70)	5.15 (1.55)	0.017	NC > PD
Right	5.12 (2.06)	4.20 (1.71)	5.14 (1.69)	0.028	NC = DIP = PD
Left	4.80 (2.18)	4.05 (1.73)	5.16 (1.56)	0.013	NC > PD
Posterior caudate	3.54 (1.51)	2.93 (1.02)	3.86 (1.20)	0.003	NC > PD
Right	3.75 (1.52)	3.10 (1.11)	4.06 (1.31)	0.003	NC > PD
Left	3.37 (1.52)	2.79 (1.00)	3.69 (1.16)	0.004	NC > PD
Putamen	7.46 (1.38)	4.61 (1.66)	7.01 (1.27)	< 0.001	DIP = NC > PD
Right	7.67 (1.39)	4.73 (1.78)	7.30 (1.30)	< 0.001	DIP = NC > PD
Left	7.26 (1.41)	4.49 (1.60)	6.73 (1.32)	< 0.001	DIP = NC > PD
Anterior putamen	7.73 (1.60)	4.73 (1.83)	7.31 (1.49)	< 0.001	DIP = NC > PD
Right	7.91 (1.54)	4.87 (1.93)	7.47 (1.55)	< 0.001	DIP = NC > PD
Left	7.54 (1.73)	4.59 (1.79)	7.15 (1.60)	< 0.001	DIP = NC > PD
Posterior putamen	7.19 (1.47)	3.82 (1.84)	6.76 (1.40)	< 0.001	DIP = NC > PD
Right	7.60 (1.55)	4.04 (2.02)	7.35 (1.57)	< 0.001	DIP = NC > PD
Left	6.86 (1.50)	3.65 (1.77)	6.30 (1.37)	< 0.001	DIP = NC > PD
Ventral putamen	6.12 (1.43)	5.34 (1.42)	5.64 (0.93)	< 0.001	DIP = NC > PD
Right	6.25 (1.52)	5.21 (1.48)	6.13 (1.00)	< 0.001	DIP = NC > PD
Left	5.99 (1.40)	5.48 (1.40)	5.18 (1.14)	< 0.001	DIP = NC > PD
Globus pallidus	4.87 (1.00)	3.59 (1.19)	5.01 (1.04)	< 0.001	DIP = NC > PD
Right	4.77 (1.08)	3.47 (1.16)	4.95 (1.08)	< 0.001	DIP = NC > PD

Values represent mean with standard deviation.

Analyses were controlled for age and performed using analysis of covariance with Bonferroni post-hoc testing.

Striatal subregion	DIP (n = 35)	PD (n = 35)	Normal controls (n = 46)	P value	Post hoc test
Left	4.95 (1.02)	3.69 (1.25)	5.06 (1.14)	< 0.001	DIP = NC > PD
Thalamus	1.43 (0.19)	1.46 (0.15)	1.62 (0.13)	< 0.001	NC > DIP = PD
Right	1.44 (0.19)	1.46 (0.16)	1.61 (0.14)	< 0.001	NC > DIP = PD
Left	1.42 (0.20)	1.46 (0.15)	1.64 (0.16)	< 0.001	NC > DIP = PD
Ventral striatum	6.94 (1.40)	4.03 (1.08)	6.50 (1.53)	< 0.001	DIP = NC > PD
Right	6.83 (1.46)	4.19 (1.16)	6.41 (1.54)	< 0.001	DIP = NC > PD
Left	7.05 (1.36)	3.87 (1.05)	6.60 (1.54)	< 0.001	DIP = NC > PD
Values represent mean with standard deviation.					
Analyses were controlled for age and performed using analysis of covariance with Bonferroni post-hoc testing.					

Discussion

This study demonstrated that patients with DIP had a decreased monoamine uptake pattern in the thalamus compared with normal controls. Striatal monoamine availability in the other subregions of DIP patients was similar to that in normal controls. Patients with PD had decreased striatal monoamine availability compared with normal controls.

In this study, striatal monoamine availability was normal in DIP patients. Because parkinsonian symptoms in DIP patients are caused by blockade of post-synaptic dopamine receptors, dopamine transporter uptake should be normal in the striatum [5]. Although some DIP patients have reduced dopamine uptake, their subclinical parkinsonism was unmasked by anti-dopaminergic drugs and progressed after the offending drugs were stopped or their primary parkinsonism was worsened by the offending drug [4, 5]. Our DIP patients had “pure” DIP, which means that their parkinsonian symptoms resolved after withdrawal of the offending drugs. Therefore, our study confirms that striatal monoamine availability in DIP is normal. However, our result differs from that of a recent study of dopamine transporters in symptomatic controls and healthy subjects that found symptomatic controls with essential tremor, vascular parkinsonism, or DIP to show higher putaminal dopamine transporter binding than healthy subjects [7]. Heterogeneity of symptomatic controls and selection bias in enrolling healthy subjects might explain that conflicting result.

In our study, only the SUVR of the thalamus differed significantly between the DIP group and normal controls. ¹⁸F-FP-CIT is a radioligand that binds not only to the striatum, but also to extra-striatal subregions such as the thalamus, hypothalamus, and brainstem [8, 9]. The binding properties of the ¹⁸F-FP-CIT radioligand represent the availability of monoamine transporters such as dopamine, serotonin,

and norepinephrine, and a decrease in its uptake implies impaired neural circuitry [8, 9]. Serotonin is the main monoamine in the thalamus, and ^{18}F -FP-CIT uptake in the thalamus also signifies serotonergic transmission from brainstem [8]. Our study supports a previous study showing that PD patients had reduced thalamic serotonin transporter binding compared with normal controls [9] and reveals that DIP patients also have lower serotonin transporter binding in the thalamus than do normal controls.

The findings of this study are difficult to interpret. One possibility is that low thalamic serotonergic availability is associated with increased risk of DIP. In PD, disruption of organized serotonergic control of the mesencephalic dopaminergic connections between the basal ganglia nuclei and across the basal ganglionic-cortico-thalamic circuits is involved in the onset of parkinsonian symptoms [10]. Therefore, the decreased monoamine uptake in the thalamus shown in this study could be associated with increased susceptibility to DIP upon exposure to an offending drug. Previous studies of the genetic polymorphism of serotonin receptors and transporters provide evidence of the development of DIP and extrapyramidal symptoms in a DIP patient and schizophrenic patients [11, 12]. Additional explanation is that offending drugs such as selective serotonin reuptake inhibitors and many antipsychotics potentially block serotonin transporters in the thalamus [8]. Prokinetics act through the release of serotonin 5-hydroxytryptamine (5-HT), so the 5-HT₃ antagonism and 5-HT₄ agonism are the main mechanisms of prokinetics [13, 14]. Mosapride [13] and levosulpiride [14] also act as 5-HT₃ antagonists. As transmission to the central nervous system is mediated predominantly by a 5-HT₃ antagonist [15], serotonin uptake in the thalamus can be decreased by prokinetics. However, that hypothesis does not explain why these offending drugs do not affect presynaptic dopamine uptake in the striatum and affect the serotonin receptor only in the thalamus.

This study has several strengths and limitations. The major strength of our study is that we enrolled only patients with “pure” DIP whose symptoms resolved after withdrawal of the offending drug. DIP is a heterogeneous clinical syndrome; many patients have a full and long-lasting recovery with no subsequent PD, while other have persistent and worsening parkinsonian symptoms after discontinuation of the offending drug (subclinical parkinsonism or DIP unmasks PD) or recurrence of PD after complete remission from DIP (DIP antedates PD) [16]. The decreased striatal monoamine availability in DIP patients could be combined with subclinical PD and other atypical parkinsonism [4, 5]. In addition, unlike most previous studies, we enrolled age-matched healthy subjects in our study. This study was conducted using a cross-sectional design and data from a PD registry, and we tried to match subject age using the similar patient matching method [17]. However, this study also has several limitations. We did not assess serotonergic binding uptake directly. Even though the ^{18}F -FP-CIT radioligand has high serotonin affinity in the extra-striatal thalamus, serotonin transporter imaging might have shown better results.

To our knowledge, few studies have investigated quantitative differences in striatal monoamine availability among DIP patients, normal controls, and PD patients. The DIP patients had striatal monoamine availability similar to that of the normal controls and essentially normal striatal monoamine availability compared with PD patients. On the other hand, monoamine availability in the thalamus of DIP

patients was lower than that in the normal controls and similar to that in PD patients. Low thalamic monoamine uptake is characteristic of DIP patients, although its clinical significance needs to be further investigated.

Methods

This study protocol was approved by the Institutional Review Board of our institution, and all subjects provided written informed consent. All experiments were performed in accordance with relevant guidelines and regulations. The study is registered (Identification Number: KCT0005552 and KCT0006293) at the Clinical Research Information Service (CRIS; <http://cris.nih.go.kr>), an online clinical trial registration system established by the Korea Centers for Disease Control and Prevention (KCDC) with support from the Korea Ministry of Health and Welfare (KMOHW). This service is affiliated with the Primary Registries in the World Health Organization (WHO) Registry Network.

All experiments were performed in accordance with relevant guidelines and regulations.

Subjects

Patients with diagnosed DIP who visited the movement disorder clinic in a university-affiliated hospital between January 2018 and December 2020 were enrolled. Age-matched PD patients newly diagnosed during the same period also were enrolled. DIP was defined using the following criteria: (1) presence of at least two of the four cardinal parkinsonian signs (tremor, rigidity, bradykinesia, and impaired postural reflexes); (2) absence of a personal history of extrapyramidal disorders before treatment with an offending drug; (3) onset of symptoms during the course of treatment with an offending drug; and (4) reversal of parkinsonian symptoms, although not necessarily completely, after discontinuation of the offending drug during follow-up of more than 6 months [18, 19]. All DIP patients showed normal dopamine transporter uptake on a visual analysis of positron emission tomography (PET) with ^{18}F -N-(3-fluoropropyl)-2beta-carbon ethoxy-3beta-(4-iodophenyl) nortropane (^{18}F -FP-CIT). PD was diagnosed based on the UK Parkinson's Disease Society Brain Bank clinical diagnostic criteria [20] and the Movement Disorder Society clinical diagnostic criteria for PD [21]. All PD patients had decreased dopamine transporter uptake in the striatum, mainly in the posterior putamen on a visual analysis. PD patients were enrolled from our research registry using the similar patient matching method [17]. Forty-six healthy subjects without any notable neurological or psychiatric diseases were recruited and included as controls. All subjects underwent brain magnetic resonance imaging (MRI) and did not demonstrate any abnormalities beyond mild white matter changes.

Demographics of age, sex, disease duration, medical history of hypertension and diabetes mellitus, and smoking status were collected. Parkinsonian motor symptoms were evaluated using the Unified Parkinson's Disease Rating Scale (UPDRS) [22] and modified Hoehn and Yahr stage score [23]. All patients underwent brain MRI and ^{18}F -FP-CIT PET at diagnosis. Normal subjects underwent brain MRI and ^{18}F -FP-CIT PET with the same protocol as used for patients.

Patients were excluded using the following criteria: (1) atypical or other secondary parkinsonism, (2) previous stroke or structural lesions on the basal ganglia, or (3) use of anti-parkinsonian medications or medications that influence striatal monoamine uptake.

PET imaging acquisition and processing

All ^{18}F -FP-CIT PET and computed tomography (CT) images were acquired using the same PET/CT scanner. Patients received an intravenous injection (average 3.7 MBq/kg) of ^{18}F -FP-CIT. Three hours later, brain CT scans were acquired for attenuation correction, followed by a 10-minute ^{18}F -FP-CIT emission PET scan. PET images were reconstructed in a $512 \times 512 \times 110$ matrix using an ordered-subsets expectation maximization algorithm. The voxel size was $0.668 \times 0.668 \times 2$ mm. Axial three-dimensional, T1-weighted, gradient-echo brain MRI (MP-RAGE) sequences (512×512 matrix, voxel spacing $0.469 \times 0.469 \times 1$ mm) were acquired using a 3.0-T scanner (Magnetom Verio, Siemens, Erlangen, Germany).

Statistical Parametric Mapping 8 software (Wellcome Trust Centre for Neuroimaging, London, UK) implemented in MATLAB 2015a (MathWorks, Natick, MA, USA) was used for co-registration and spatial normalization of images and voxel-based comparisons. To spatially normalize the ^{18}F -FP-CIT PET images, an MR-guided conventional spatial normalization method was used [24]. Then, PET images were co-registered to individual MR images and spatially normalized to the Montreal Neurological Institute space using parameter normalizing, skull-stripped MR [24]. Volume of interest (VOI) templates of striatal subregions were obtained after subcortical parcellation and partial volume correction using FreeSurfer 5.1 (Massachusetts General Hospital, Harvard Medical School; <http://surfer.nmr.mgh.harvard.edu>). VOI templates of four striatal subregions, the thalamus, and the cerebellum were normalized spatially to the MR template. Then subregional uptake values for each side of the caudate, putamen, globus pallidus, ventral striatum, thalamus, and cerebellum were calculated using the in-house MATLAB 2015a program (MathWorks, Natick, MA, USA) from our previous studies [25–28]. The mean standardized uptake value ratio (SUVR) was calculated as target SUV divided by cerebellar SUV.

Statistical analysis

Statistical analyses were performed using SPSS software version 24.0 for Mac (IBM Corporation, New York, NY, USA). Pearson's χ^2 test was used to compare the frequencies of categorical variables. Independent sample *t*-testing was used to compare means between the DIP and PD groups, and one-way analysis of variance testing was used to compare means among the three groups. The subregional monoamine uptake of the three groups was controlled for age and analyzed using one-way analysis of covariance with Bonferroni post-hoc testing. Statistical significance was set at $p < 0.05$.

Data Availability

Anonymized data generated during the current study are available from the corresponding author on reasonable request from individuals affiliated with research or health care institutions.

Declarations

Data Availability

Anonymized data generated during the current study are available from the corresponding author on reasonable request from individuals affiliated with research or health care institutions.

Conflict of Interest: The authors have no conflicts of interest

Study funding: This research was supported by the Basic Science Research Program through the National Research Foundation of Korea (NRF) funded by the Ministry of Science and ICT (NRF-2017R1D1A1B06028086 and NRF-2019R1G1A1099554) and the R&D project of Korea National Institute of Health funded by the Ministry of Health and Welfare (2021-ER1008-00). This study also was supported by the Catholic Medical Center Research Foundation in the program year of 2019.

References

1. Bondon-Guitton, E. *et al.* Drug-induced parkinsonism: a review of 17 years' experience in a regional pharmacovigilance center in France. *Mov. Disord*, **26**, 2226–2231 (2011).
2. Savica, R. *et al.* Incidence and time trends of drug-induced parkinsonism: A 30-year population-based study. *Mov. Disord*, **32**, 227–234 (2017).
3. Han, S. *et al.* Prevalence and incidence of Parkinson's disease and drug-induced parkinsonism in Korea. *BMC. Public Health*, **19**, 1328 (2019).
4. Lopez-Sendon, J., Mena, M. A. & de Yebenes, J. G. Drug-induced parkinsonism. *Expert Opin. Drug Saf*, **12**, 487–496 (2013).
5. Brigo, F., Erro, R., Marangi, A., Bhatia, K. & Tinazzi, M. Differentiating drug-induced parkinsonism from Parkinson's disease: an update on non-motor symptoms and investigations. *Parkinsonism Relat. Disord*, **20**, 808–814 (2014).
6. Brigo, F., Matinella, A., Erro, R. & Tinazzi, M. [123I]FP-CIT SPECT (DaTSCAN) may be a useful tool to differentiate between Parkinson's disease and vascular or drug-induced parkinsonisms: a meta-analysis. *Eur. J. Neurol*, **21**, 1369–1390 (2014).
7. Honkanen, E. A. *et al.* Dopamine transporter binding in symptomatic controls and healthy volunteers: Considerations for neuroimaging trials. *Neuroimage Clin*, **32**, 102807 (2021).
8. Koch, W. *et al.* Extrastriatal binding of [¹²³I]FP-CIT in the thalamus and pons: gender and age dependencies assessed in a European multicentre database of healthy controls. *Eur. J. Nucl. Med. Mol. Imaging*, **41**, 1938–1946 (2014).
9. Pagano, G., Niccolini, F., Fusar-Poli, P. & Politis, M. Serotonin transporter in Parkinson's disease: A meta-analysis of positron emission tomography studies. *Ann. Neurol*, **81**, 171–180 (2017).
10. Vermeiren, Y., Janssens, J., Van Dam, D. & De Deyn, P. P. Serotonergic Dysfunction in Amyotrophic Lateral Sclerosis and Parkinson's Disease: Similar Mechanisms, Dissimilar Outcomes. *Front.*

Neurosci, **12**, 185 (2018).

11. López-Torres, E. *et al.* Aripiprazole-induced parkinsonism and its association with dopamine and serotonin receptor polymorphisms. *J. Clin. Psychopharmacol*, **28**, 352–353 (2008).
12. Güzey, C., Scordo, M. G., Spina, E., Landsem, V. M. & Spigset, O. Antipsychotic-induced extrapyramidal symptoms in patients with schizophrenia: associations with dopamine and serotonin receptor and transporter polymorphisms. *Eur. J. Clin. Pharmacol*, **63**, 233–241 (2007).
13. Hasler, W. L. Emerging drugs for the treatment of gastroparesis. *Expert Opin. Emerg. Drugs*, **19**, 261–279 (2014).
14. Tonini, M. *et al.* 5-HT₄ receptors contribute to the motor stimulating effect of levosulpiride in the guinea-pig gastrointestinal tract. *Dig. Liver Dis*, **35**, 244–250 (2003).
15. Gershon, M. D. Review article: serotonin receptors and transporters - roles in normal and abnormal gastrointestinal motility. *Aliment. Pharmacol. Ther*, **20**, S3–14 (2004).
16. Tolosa, E., Coelho, M. & Gallardo, M. DAT imaging in drug-induced and psychogenic parkinsonism. *Mov. Disord*, **18**, S28–33 (2003).
17. Vatsalan, D. & Christen, P. Privacy-preserving matching of similar patients. *J. Biomed. Inform*, **59**, 285–298 (2016).
18. Kim, J. S. *et al.* Cardiovascular autonomic dysfunction in patients with drug-induced parkinsonism. *J. Clin. Neurol*, **13**, 15–20 (2017).
19. Kim, J. S., Youn, J., Shin, H. & Cho, J. W. Nonmotor symptoms in drug-induced parkinsonism and drug-naïve Parkinson disease. *Can. J. Neurol. Sci*, **40**, 36–41 (2013).
20. Gibb, W. R. & Lees, A. J. The relevance of the Lewy body to the pathogenesis of idiopathic Parkinson's disease. *J. Neurol. Neurosurg. Psychiatry*, **51**, 745–752 (1988).
21. Postuma, R. B. *et al.* MDS clinical diagnostic criteria for Parkinson's disease. *Mov. Disord*, **30**, 1591–1601 (2015).
22. Fahn, S. & Elton, R. L., Members of the UPDRS Development Committee. Unified Parkinson's disease rating scale. In: Fahn, S., Marsden, C.D., Calne, D.B., & Leiberman, A., editors. Recent development in Parkinson's disease. Florham Park:Macmillan Health Care Information; 1987.pp 157–63.
23. Hoehn, M. M. & Yahr, M. D. Parkinsonism: onset, progression and mortality. *Neurology*, **17**, 427–442 (1967).
24. Baek, M. S., Cho, H., Ryu, Y. H. & Lyoo, C. H. Customized FreeSurfer-based brain atlas for diffeomorphic anatomical registration through exponentiated lie algebra tool. *Ann. Nucl. Med*, **34**, 280–288 (2020).
25. Oh, Y. S. *et al.* The association of β -amyloid with cognition and striatal dopamine in early, non-demented Parkinson's disease. *J. Parkinsons Dis*, **11**, 605–613 (2021).
26. Oh, Y. S. *et al.* Gender difference in the effect of uric acid on striatal dopamine in early Parkinson's disease. *Eur. J. Neurol*, **27**, 258–264 (2020).

27. Oh, Y. S. *et al.* Neuropsychiatric symptoms and striatal monoamine availability in early Parkinson's disease without dementia. *Neurol. Sci*, **42**, 711–718 (2021).
28. Yoo, S. W. *et al.* Low thalamic monoamine transporter availability is related to excessive daytime sleepiness in early Parkinson's disease. *Neurol. Sci*, **41**, 1081–1087 (2020).

Figures

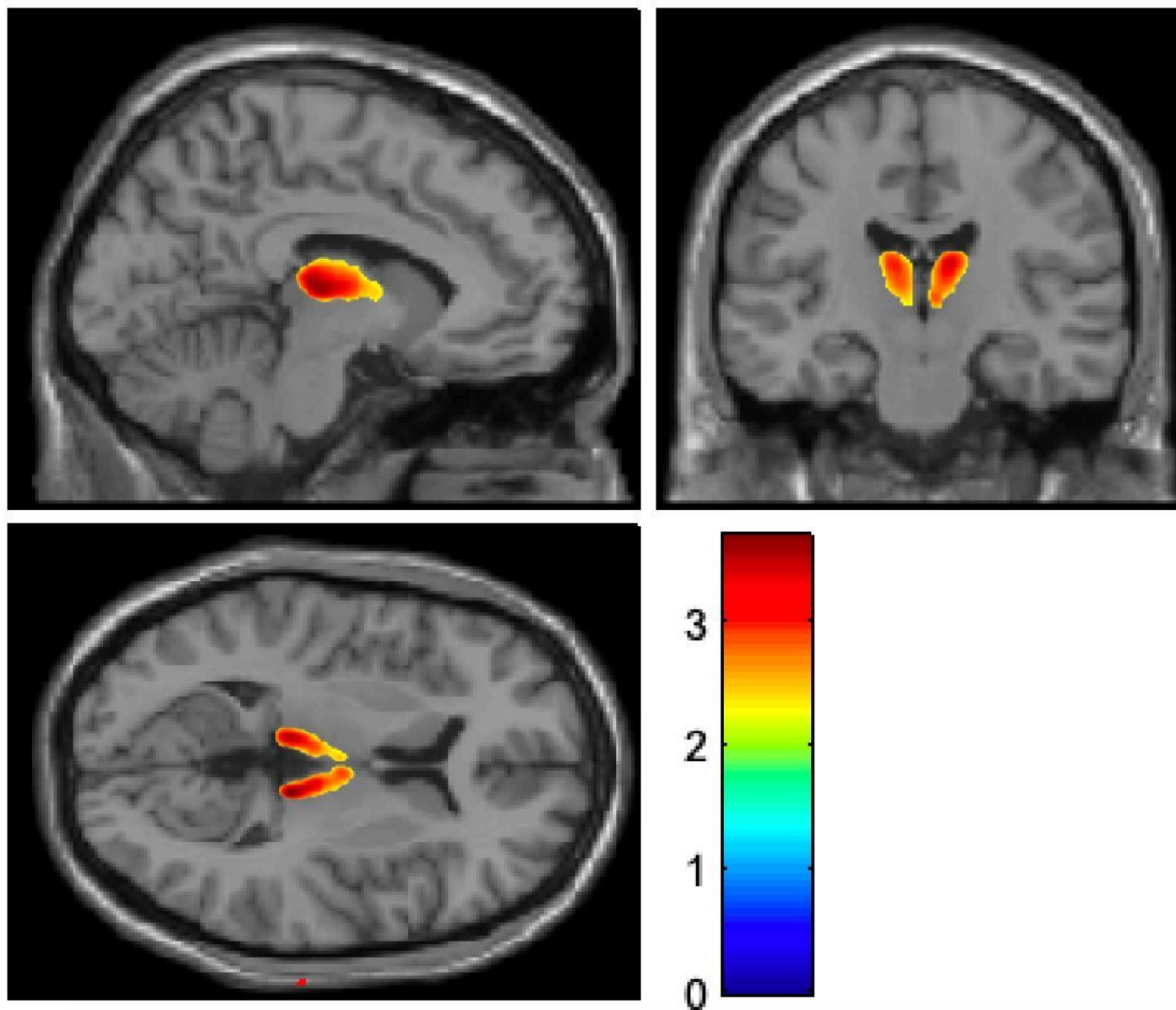


Figure 1

Age-controlled, voxel-based comparison of ^{18}F -N-(3-fluoropropyl)-2beta-carbon ethoxy-3beta-(4-iodophenyl) nortropane positron emission tomography (^{18}F -FP-CIT PET) between patients with drug-induced parkinsonism (DIP) and the healthy control group. Differences in standardized uptake value

ratios (SUVRs) between the two groups are visible in the colored region. The SUVR values in the thalamus of patients with DIP were lower than those of healthy controls. T values are indicated by the colored bar.

Supplementary Files

This is a list of supplementary files associated with this preprint. Click to download.

- [Data.xlsx](#)